

Converting Colors

Hex(C6A69B)

Have a look what the booklet for
Hex(C6A69B) contains.

Hex(C6A69B)	3
<i>Conversions</i>	4
<i>Details</i>	6
<i>Harmonies</i>	11
<i>Previews</i>	23
<i>Color Blindness Simulation</i>	26
<i>CSS Examples</i>	29

Color

Hex(C6A69B)

Conversions

Conversions Part 1

Format	Color
Hex	C6A69B
RGB	198, 166, 155
RGB Percent	78%, 65%, 61%
CMY	0.2235, 0.3490, 0.3922
CMYK	0.00, 0.16, 0.22, 0.22
HSL	15°, 27%, 69%
HSV	15°, 22%, 78%
XYZ	42.8413, 41.6448, 36.7906
YIQ	174.3140, 22.6030, 3.3630

Conversions

Conversions Part 2

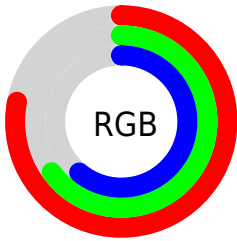
Format	Color
R_{YB}	198, 170, 155
Decimal	13018779
CIE _{Lab}	70.63, 9.98, 10.05
CIE _{LCh}	71, 14.165, 45.210
Yxy	41.6448, 0.3533, 0.3434
Android (android.graphics.Color)	4291208859 (0xFFC6A69B)
YUV	174.3140, -9.5218, 20.7726
Hunter-Lab	64.5328, 5.5684, 11.3713

Details

The Hex color **C6A69B** is a light color, and the websafe version is hex **CC9999**. A complement of this color would be **9BBBC6**, and the grayscale version is **AEAEAE**.

A 20% lighter version of the original color is **FFDDD1**, and **907268** is the 20% darker color. If you saturate the color by 10%, you get **C69787**, and if you desaturate by 10%, it is **C6B5AF**.

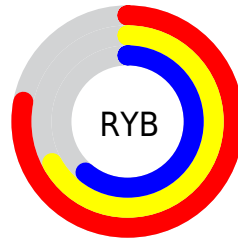
Distribution



Red (78%)

Green (65%)

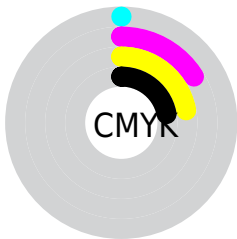
Blue (61%)



Red (78%)

Yellow (67%)

Blue (61%)

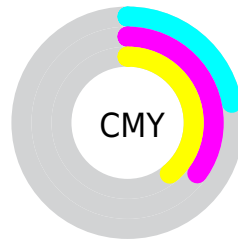


Cyan (0%)

Magenta (16%)

Yellow (22%)

Black (22%)



Cyan (22%)

Magenta (35%)

Yellow (39%)

Brightness & Saturation Gradients

These gradients show how the Hex color C6A69B changes by changing the brightness by 10 percent. The first figure shows a shift by +10% for each color and the second figure -10%.

Similar to the brightness gradients but the following saturation gradients show a change of the Hex color C6A69B by changing the saturation by 10% instead.



C6A69B



C6A69B

FFFFFF



AA8C81



FFDDD1



907268



FFFAEE



765A50



5C4239



442C23



2D170E



180000



000000



C6A69B



C6A69B

 C69787

 C6B5AF

 C68973

 C6C3C3

 C67A60

 C6D2D6

 C66B4C

 C6E1EA

 C65C38

 C6F0FE

 C64E24

 C6FEFF

 C63F10

 C6FFFF

 C63300

Harmonies

Analogous

The Analogous color harmony consists of three colors that are next to each other on the color wheel.



C8A4A7



C6A69B



BDAA94

Triad

The Triadic color harmony groups three colors that are evenly spaced from another and form a triangle on the color wheel.



C6A69B



94B4A6



A7ACC5

Complementary

The Complementary color scheme is a pair of colors which are on the opposite of each other on the color wheel.



C6A69B



9BBC6

Split Complementary

Split-complementary colors differ from the complementary color scheme. The scheme consists of three colors, the original color and two neighbors of the complement color.



97B0C5



C6A69B



8CB4B3

Square

The Square scheme is like the rectangle color scheme, but the four colors are evenly spaced on the color wheel.



C6A69B



A1B29A



8DB3BF



B7A7BF

Rectangle

The Rectangle color scheme consists of four colors that form a rectangle on the color wheel.



C6A69B



B5AD93



8DB3BF



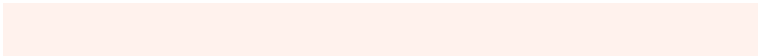
A2ADC6

Sweetspot

The Sweet Spot groups the original color and five complimentary colors.



C6A69B



FFF2ED



C69BBB



807875



000000



808080

Same Dimension

The Same Dimension uses a secret algorithm to generate beautiful new colors.



C6A69B



FFCEBD



C6BB9B



635C5A



A32A00



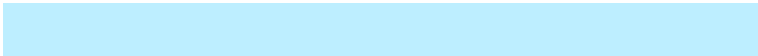
240900

Inverse Universe

The Inverse Universe completely reimagines the original color for something new.



9BBBC6



BDEEFF



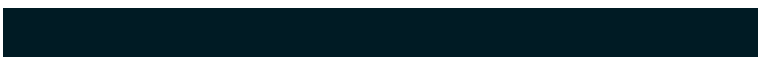
9BA6C6



5A6163



0079A3



001B24

Previews

White Background



This preview shows how the Hex color C6A69B looks on a white background.

Color Contrast Check

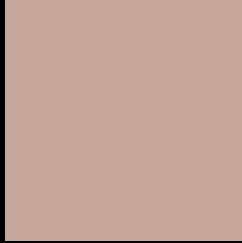
Large Text (above 18pt) WCAG AA × Fail

Any Text WCAG AA × Fail

Large Text (above 18pt) WCAG AAA × Fail

Any Text WCAG AAA × Fail

Black Background



This preview shows how the Hex color C6A69B looks on a black background.

Color Contrast Check

Large Text (above 18pt) WCAG AA ✓ Pass

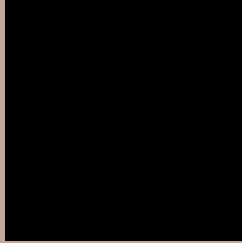
Any Text WCAG AA ✓ Pass

Large Text (above 18pt) WCAG AAA ✓ Pass

Any Text WCAG AAA ✓ Pass

If you want to check with other color combinations, try the [Color Contrast Checker](#).

Hex C6A69B Background



This preview shows how black text looks on a background with the Hex color C6A69B.

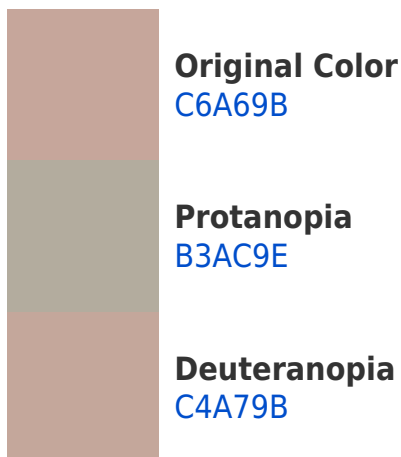


This preview shows how white text looks on a background with the Hex color C6A69B.

Color Blindness Simulation

Color vision deficiency is a very complex topic, and I could not describe the different causes any better than Wikipedia does, so if you want to learn more, you should check out their [article about color blindness](#).

Dichromacy





Tritanopia
C8A3B0

Trichromacy



Original Color
C6A69B

Protanomaly
BAAA9D

Deuteranomaly
C5A79B

Tritanomaly
C7A4A8

Monochromacy



Original Color
C6A69B

Achromatopsia
AEAEAE

Achromatomaly
B7ABA7

CSS Examples

Text

The CSS property to change the color of the text to Hex C6A69B is called "color". The color property can be set on classes, ids or directly on the HTML element.

This example shows how text in the color #C6A69B looks like.

```
.text, #text, p{  
    color:#C6A69B  
}
```

If you want to add a text shadow in that color use the text-shadow property, you can generate a text shadow directly with our [CSS Text Shadow Generator](#).

Here you see how black text with a 4 pixel #C6A69B colored shadow looks like.

```
.shadow{ text-shadow: 4px 4px 2px #C6A69B
}
```

Border

The CSS property to change the border of an element to Hex C6A69B is called "border". The border property can be set on classes, ids or directly on the HTML element.

This example shows the color as border, it can be applied via the CSS property "border" or "border-color".

```
.border, #border, table{ border:4px solid
#C6A69B }
```

If only the border color should be changed use the property `border-color`.

```
.border{ border-color:#C6A69B }
```

If you want to add a box shadow in that color use:

Here you see how a box with a 4 pixel #C6A69B colored shadow looks like.

```
.boxshadow{ -moz-box-shadow:4px 4px 4px  
4px #C6A69B; -webkit-box-shadow:4px 4px  
4px 4px #C6A69B; box-shadow:4px 4px 4px  
4px #C6A69B }
```

Background

The CSS property to change the background color of an element to Hex C6A69B is called "background". The background property can be set on classes, ids or directly on the HTML element.

```
.background, #background, body{  
background:#C6A69B }
```

If only the background color should be changed can be used:

```
.background{ background-color:#C6A69B }
```

This example shows the color as background, it is applied via the CSS property "background".

To optimize and compress your CSS code, you can use our [online CSS compressor and optimizer](#) based on csstidy. If you want to create a linear or radial gradient as background or border, check our [CSS Gradient Generator](#).

Hey! You found this booklet interesting? Support Converting Colors with the new Membership Option!

The pro membership hides all ads, plus gives you double the colors in the color bucket, and more awesome pro features!

[Learn more, Memberships starting at \\$2.50/m!](#)

**Follow me
on Twitter!**

@ConvertingColor