

Converting Colors

Hex(C6AB97)

Have a look what the booklet for
Hex(C6AB97) contains.

Hex(C6AB97)	3
<i>Conversions</i>	4
<i>Details</i>	6
<i>Harmonies</i>	11
<i>Previews</i>	23
<i>Color Blindness Simulation</i>	26
<i>CSS Examples</i>	29

Color

Hex(C6AB97)

Conversions

Conversions Part 1

Format	Color
Hex	C6AB97
RGB	198, 171, 151
RGB Percent	78%, 67%, 59%
CMY	0.2235, 0.3294, 0.4078
CMYK	0.00, 0.14, 0.24, 0.22
HSL	26°, 29%, 68%
HSV	26°, 24%, 78%
XYZ	43.4375, 43.3660, 35.3592
YIQ	176.7930, 22.5120, -0.4960

Conversions

Conversions Part 2

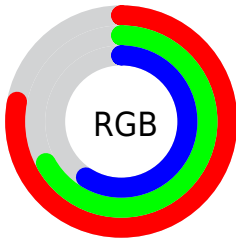
Format	Color
RYB	198, 186, 151
Decimal	13020055
CIELab	71.80, 6.67, 13.91
CIElCh	72, 15.431, 64.371
Yxy	43.3660, 0.3556, 0.3550
Android (android.graphics.Color)	4291210135 (0xFFC6AB97)
YUV	176.7930, -12.7159, 18.5985
Hunter-Lab	65.8528, 2.4989, 14.2616

Details

The Hex color **C6AB97** is a light color, and the websafe version is hex **CC9999**. A complement of this color would be **97B2C6**, and the grayscale version is **B1B1B1**.

A 20% lighter version of the original color is **FFE2CD**, and **907764** is the 20% darker color. If you saturate the color by 10%, you get **C6A083**, and if you desaturate by 10%, it is **C6B6AB**.

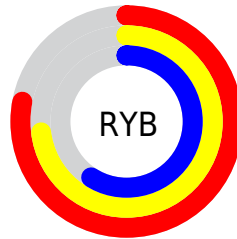
Distribution



Red (78%)

Green (67%)

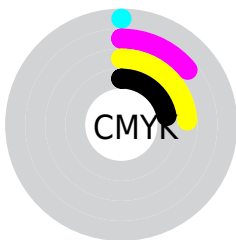
Blue (59%)



Red (78%)

Yellow (73%)

Blue (59%)

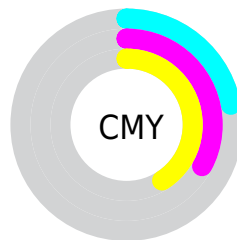


Cyan (0%)

Magenta (14%)

Yellow (24%)

Black (22%)



Cyan (22%)

Magenta (33%)

Yellow (41%)

Brightness & Saturation Gradients

These gradients show how the Hex color C6AB97 changes by changing the brightness by 10 percent. The first figure shows a shift by +10% for each color and the second figure -10%.

Similar to the brightness gradients but the following saturation gradients show a change of the Hex color C6AB97 by changing the saturation by 10% instead.



C6AB97



C6AB97

FFFFFF



AA907D



FFE2CD



907764



FFFFE9



765E4C



5C4735



443020



2D1B09



170100



000000



C6AB97



C6AB97

 C6A083

 C6B6AB

 C6946F

 C6C2BF

 C6895C

 C6CDD2

 C67E48

 C6D8E6

 C67234

 C6E4FA

 C66720

 C6EFFF

 C65B0C

 C6FBFF

 C65400

 C6FFFF

Harmonies

Analogous

The Analogous color harmony consists of three colors that are next to each other on the color wheel.



CDA7A1



C6AB97



B9B094

Triad

The Triadic color harmony groups three colors that are evenly spaced from another and form a triangle on the color wheel.



C6AB97



8EB8B2



B5ACC7

Complementary

The Complementary color scheme is a pair of colors which are on the opposite of each other on the color wheel.



C6AB97



97B2C6

Split Complementary

Split-complementary colors differ from the complementary color scheme. The scheme consists of three colors, the original color and two neighbors of the complement color.



A3B0CC



C6AB97



8CB7BF

Square

The Square scheme is like the rectangle color scheme, but the four colors are evenly spaced on the color wheel.



C6AB97



9AB7A3



93B5C9



C4A8BC

Rectangle

The Rectangle color scheme consists of four colors that form a rectangle on the color wheel.



C6AB97



AFB396



93B5C9



AFADC9

Sweetspot

The Sweet Spot groups the original color and five complimentary colors.



C6AB97



FFF5ED



C697B2



807A75



000000



808080

Same Dimension

The Same Dimension uses a secret algorithm to generate beautiful new colors.



C6AB97



FFD6B8



C6C297



635E5A



A34500



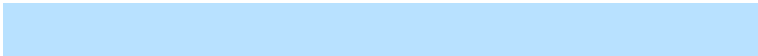
240F00

Inverse Universe

The Inverse Universe completely reimagines the original color for something new.



97B2C6



B8E1FF



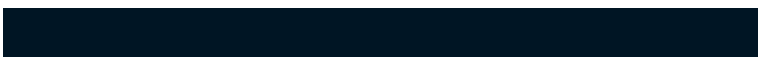
979BC6



5A5F63



005EA3



001524

Previews

White Background



This preview shows how the Hex color C6AB97 looks on a white background.

Color Contrast Check

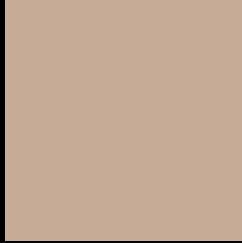
Large Text (above 18pt) WCAG AA × Fail

Any Text WCAG AA × Fail

Large Text (above 18pt) WCAG AAA × Fail

Any Text WCAG AAA × Fail

Black Background



This preview shows how the Hex color C6AB97 looks on a black background.

Color Contrast Check

Large Text (above 18pt) WCAG AA ✓ Pass

Any Text WCAG AA ✓ Pass

Large Text (above 18pt) WCAG AAA ✓ Pass

Any Text WCAG AAA ✓ Pass

If you want to check with other color combinations, try the [Color Contrast Checker](#).

Hex C6AB97 Background



This preview shows how black text looks on a background with the Hex color C6AB97.

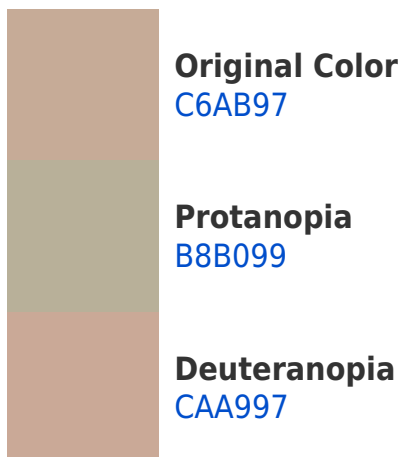


This preview shows how white text looks on a background with the Hex color C6AB97.

Color Blindness Simulation

Color vision deficiency is a very complex topic, and I could not describe the different causes any better than Wikipedia does, so if you want to learn more, you should check out their [article about color blindness](#).

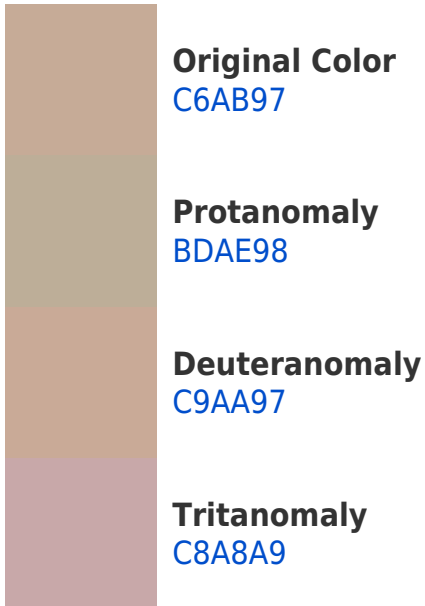
Dichromacy





Tritanopia
C9A7B4

Trichromacy



Monochromacy



CSS Examples

Text

The CSS property to change the color of the text to Hex C6AB97 is called "color". The color property can be set on classes, ids or directly on the HTML element.

This example shows how text in the color #C6AB97 looks like.

```
.text, #text, p{  
    color:#C6AB97  
}
```

If you want to add a text shadow in that color use the text-shadow property, you can generate a text shadow directly with our [CSS Text Shadow Generator](#).

Here you see how black text with a 4 pixel #C6AB97 colored shadow looks like.

```
.shadow{ text-shadow: 4px 4px 2px #C6AB97
}
```

Border

The CSS property to change the border of an element to Hex C6AB97 is called "border". The border property can be set on classes, ids or directly on the HTML element.

This example shows the color as border, it can be applied via the CSS property "border" or "border-color".

```
.border, #border, table{ border:4px solid
#C6AB97 }
```

If only the border color should be changed use the property `border-color`.

```
.border{ border-color:#C6AB97 }
```

If you want to add a box shadow in that color use:

Here you see how a box with a 4 pixel #C6AB97 colored shadow looks like.

```
.boxshadow{ -moz-box-shadow:4px 4px 4px  
4px #C6AB97; -webkit-box-shadow:4px 4px  
4px 4px #C6AB97; box-shadow:4px 4px 4px  
4px #C6AB97 }
```

Background

The CSS property to change the background color of an element to Hex C6AB97 is called "background". The background property can be set on classes, ids or directly on the HTML element.

```
.background, #background, body{  
background:#C6AB97 }
```

If only the background color should be changed can be used:

```
.background{ background-color:#C6AB97 }
```

This example shows the color as background, it is applied via the CSS property "background".

To optimize and compress your CSS code, you can use our [online CSS compressor and optimizer](#) based on csstidy. If you want to create a linear or radial gradient as background or border, check our [CSS Gradient Generator](#).

Hey! You found this booklet interesting? Support Converting Colors with the new Membership Option!

The pro membership hides all ads, plus gives you double the colors in the color bucket, and more awesome pro features!

[Learn more, Memberships starting at \\$2.50/m!](#)

**Follow me
on Twitter!**

@ConvertingColor