

# Converting Colors

Hex(C6ADA6)

Have a look what the booklet for  
Hex(C6ADA6) contains.

<b>Hex(C6ADA6)</b> .....	3
<i><b>Conversions</b></i> .....	4
<i><b>Details</b></i> .....	6
<i><b>Harmonies</b></i> .....	11
<i><b>Previews</b></i> .....	23
<i><b>Color Blindness Simulation</b></i> .....	26
<i><b>CSS Examples</b></i> .....	29

# **Color**

**Hex(C6ADA6)**

# Conversions

## Conversions Part 1

Format	Color
Hex	C6ADA6
RGB	198, 173, 166
RGB Percent	78%, 68%, 65%
CMY	0.2235, 0.3216, 0.3490
CMYK	0.00, 0.13, 0.16, 0.22
HSL	13°, 22%, 71%
HSV	13°, 16%, 78%
XYZ	45.1152, 44.6461, 42.3161
YIQ	179.6770, 17.1470, 3.1230

# Conversions

## Conversions Part 2

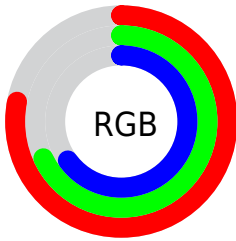
<b>Format</b>	<b>Color</b>
<a href="#">RYB</a>	<a href="#">198, 175, 166</a>
Decimal	<a href="#">13020582</a>
CIELab	<a href="#">72.66, 7.88, 6.91</a>
CIElCh	<a href="#">73, 10.480, 41.224</a>
Yxy	<a href="#">44.6461, 0.3416, 0.3380</a>
Android (android.graphics.Color)	<a href="#">4291210662 (0xFFC6ADA6)</a>
YUV	<a href="#">179.6770, -6.7428, 16.0693</a>
Hunter-Lab	<a href="#">66.8177, 3.5919, 9.2236</a>

# Details

The Hex color **C6ADA6** is a light color, and the websafe version is hex **CC9999**. A complement of this color would be **A6BFC6**, and the grayscale version is **B4B4B4**.

A 20% lighter version of the original color is **FFE4DD**, and **907972** is the 20% darker color. If you saturate the color by 10%, you get **C69E92**, and if you desaturate by 10%, it is **C6BCBA**.

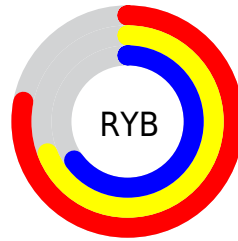
# Distribution



Red (78%)

Green (68%)

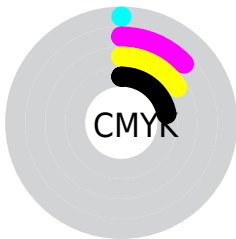
Blue (65%)



Red (78%)

Yellow (69%)

Blue (65%)

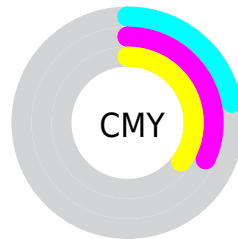


Cyan (0%)

Magenta (13%)

Yellow (16%)

Black (22%)



Cyan (22%)

Magenta (32%)

Yellow (35%)

# Brightness & Saturation Gradients

These gradients show how the Hex color C6ADA6 changes by changing the brightness by 10 percent. The first figure shows a shift by +10% for each color and the second figure -10%.

Similar to the brightness gradients but the following saturation gradients show a change of the Hex color C6ADA6 by changing the saturation by 10% instead.





C6ADA6



C6ADA6

FFFFFF



AB928C



FFE4DD



907972



FFFFFA



76605A



5D4842



45322C



2E1D18



1B0300



000000



C6ADA6



C6ADA6

 C69E92

 C6BCBA

 C68E7E

 C6CCCE

 C67F6B

 C6DBE1

 C66F57

 C6EBF5

 C66043

 C6FAFF

 C6502F

 C6FFFF

 C6411B

 C63108

 C62B00

# Harmonies

## Analogous

The Analogous color harmony consists of three colors that are next to each other on the color wheel.



C7ACAF



C6ADA6



COB0A0

# Triad

The Triadic color harmony groups three colors that are evenly spaced from another and form a triangle on the color wheel.



C6ADA6



A1B7AC



ADB2C5

# Complementary

The Complementary color scheme is a pair of colors which are on the opposite of each other on the color wheel.



C6ADA6



A6BFC6

# Split Complementary

Split-complementary colors differ from the complementary color scheme. The scheme consists of three colors, the original color and two neighbors of the complement color.



A2B5C4



C6ADA6



9BB8B6

# Square

The Square scheme is like the rectangle color scheme, but the four colors are evenly spaced on the color wheel.



C6ADA6



ABB6A4



9BB7BE



B9AFC1

# Rectangle

The Rectangle color scheme consists of four colors that form a rectangle on the color wheel.



C6ADA6



BAB29F



9BB7BE



A9B3C5

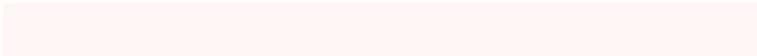


# Sweetspot

The Sweet Spot groups the original color and five complimentary colors.



C6ADA6



FFF5F2



C6A6BF



807A78



000000



808080

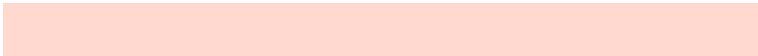


# Same Dimension

The Same Dimension uses a secret algorithm to generate beautiful new colors.



C6ADA6



FFD9CF



C6BDA6



635C5A



A32400



240800

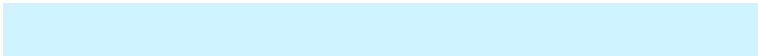


# Inverse Universe

The Inverse Universe completely reimagines the original color for something new.



A6BFC6



CFF4FF



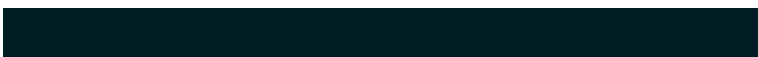
A6AFC6



5A6163



0080A3

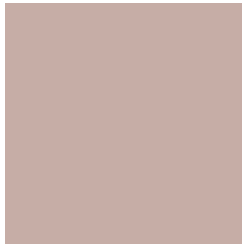


001C24



# Previews

## White Background



This preview shows how the Hex color C6ADA6 looks on a white background.

## Color Contrast Check

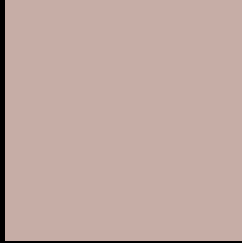
Large Text (above 18pt) WCAG AA × Fail

Any Text WCAG AA × Fail

Large Text (above 18pt) WCAG AAA × Fail

Any Text WCAG AAA × Fail

# Black Background



This preview shows how the Hex color C6ADA6 looks on a black background.

## Color Contrast Check

Large Text (above 18pt) WCAG AA ✓ Pass

Any Text WCAG AA ✓ Pass

Large Text (above 18pt) WCAG AAA ✓ Pass

Any Text WCAG AAA ✓ Pass

If you want to check with other color combinations, try the [Color Contrast Checker](#).



## Hex C6ADA6 Background



This preview shows how black text looks on a background with the Hex color C6ADA6.

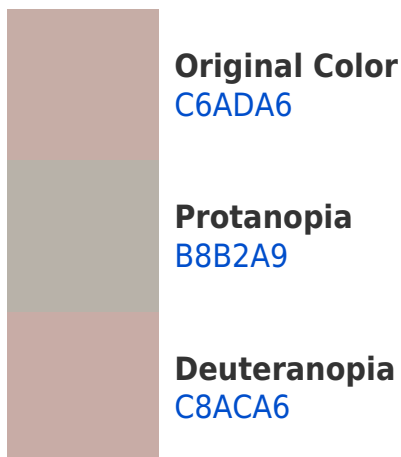



This preview shows how white text looks on a background with the Hex color C6ADA6.

# Color Blindness Simulation

Color vision deficiency is a very complex topic, and I could not describe the different causes any better than Wikipedia does, so if you want to learn more, you should check out their [article about color blindness](#).

## Dichromacy





**Tritanopia**  
C8AAB8

# Trichromacy



**Original Color**  
C6ADA6

**Protanomaly**  
BDB0A8

**Deuteranomaly**  
C7ACA6

**Tritanomaly**  
C7ABB1

# Monochromacy



**Original Color**  
C6ADA6

**Achromatopsia**  
B4B4B4

**Achromatomaly**  
BBB1AF

# CSS Examples

## Text

The CSS property to change the color of the text to Hex C6ADA6 is called "color". The color property can be set on classes, ids or directly on the HTML element.

This example shows how text in the color #C6ADA6 looks like.

```
.text, #text, p{  
  color:#C6ADA6  
}
```

If you want to add a text shadow in that color use the text-shadow property, you can generate a text shadow directly with our [CSS Text Shadow Generator](#).

Here you see how black text with a 4 pixel #C6ADA6 colored shadow looks like.

```
.shadow{ text-shadow: 4px 4px 2px #C6ADA6  
}
```

## Border

The CSS property to change the border of an element to Hex C6ADA6 is called "border". The border property can be set on classes, ids or directly on the HTML element.

This example shows the color as border, it can be applied via the CSS property "border" or "border-color".

```
.border, #border, table{ border:4px solid  
#C6ADA6 }
```

If only the border color should be changed use the property `border-color`.

```
.border{ border-color:#C6ADA6 }
```

If you want to add a box shadow in that color use:

Here you see how a box with a 4 pixel #C6ADA6 colored shadow looks like.

```
.boxshadow{ -moz-box-shadow:4px 4px 4px  
4px #C6ADA6; -webkit-box-shadow:4px 4px  
4px 4px #C6ADA6; box-shadow:4px 4px 4px  
4px #C6ADA6 }
```

# Background

The CSS property to change the background color of an element to Hex C6ADA6 is called "background". The background property can be set on classes, ids or directly on the HTML element.

```
.background, #background, body{  
background:#C6ADA6 }
```

If only the background color should be changed can be used:

```
.background{ background-color:#C6ADA6 }
```

This example shows the color as background, it is applied via the CSS property "background".

To optimize and compress your CSS code, you can use our [online CSS compressor and optimizer](#) based on csstidy. If you want to create a linear or radial gradient as background or border, check our [CSS Gradient Generator](#).



Hey! You found this booklet interesting? Support Converting Colors with the new Membership Option!

The pro membership hides all ads, plus gives you double the colors in the color bucket, and more awesome pro features!

**[Learn more, Memberships starting at \\$2.50/m!](#)**

**Follow me  
on Twitter!**

@ConvertingColor