

# Converting Colors

Hex(C6AEB2)

Have a look what the booklet for  
Hex(C6AEB2) contains.

<b>Hex(C6AEB2)</b> .....	3
<i><b>Conversions</b></i> .....	4
<i><b>Details</b></i> .....	6
<i><b>Harmonies</b></i> .....	11
<i><b>Previews</b></i> .....	23
<i><b>Color Blindness Simulation</b></i> .....	26
<i><b>CSS Examples</b></i> .....	29

# **Color**

**Hex(C6AEB2)**

# Conversions

## Conversions Part 1

Format	Color
Hex	C6AEB2
RGB	198, 174, 178
RGB Percent	78%, 68%, 70%
CMY	0.2235, 0.3176, 0.3020
CMYK	0.00, 0.12, 0.10, 0.22
HSL	350°, 17%, 73%
HSV	350°, 12%, 78%
XYZ	46.4606, 45.4922, 48.4516
YIQ	181.6320, 13.0200, 6.3320

# Conversions

## Conversions Part 2

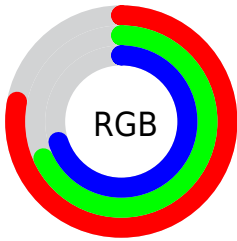
Format	Color
<a href="#">RYB</a>	<a href="#">198, 174, 178</a>
Decimal	<a href="#">13020850</a>
CIELab	<a href="#">73.21, 9.32, 1.13</a>
CIElCh	<a href="#">73, 9.391, 6.898</a>
Yxy	<a href="#">45.4922, 0.3309, 0.3240</a>
Android (android.graphics.Color)	<a href="#">4291210930 (0xFFC6AEB2)</a>
YUV	<a href="#">181.6320, -1.7906, 14.3547</a>
Hunter-Lab	<a href="#">67.4479, 4.9236, 4.6222</a>

# Details

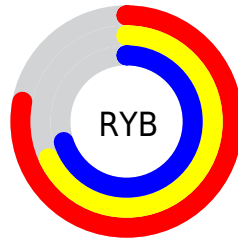
The Hex color **C6AEB2** is a light color, and the websafe version is hex **CC9999**. A complement of this color would be **AEC6C2**, and the grayscale version is **B6B6B6**.

A 20% lighter version of the original color is **FFE5EA**, and **907A7D** is the 20% darker color. If you saturate the color by 10%, you get **C69AA1**, and if you desaturate by 10%, it is **C6C2C3**.

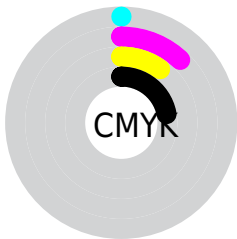
# Distribution



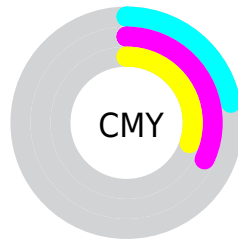
- Red (78%)
- Green (68%)
- Blue (70%)



- Red (78%)
- Yellow (68%)
- Blue (70%)



- Cyan (0%)
- Magenta (12%)
- Yellow (10%)
- Black (22%)



- Cyan (22%)
- Magenta (32%)
- Yellow (30%)

# Brightness & Saturation Gradients

These gradients show how the Hex color C6AEB2 changes by changing the brightness by 10 percent. The first figure shows a shift by +10% for each color and the second figure -10%.

Similar to the brightness gradients but the following saturation gradients show a change of the Hex color C6AEB2 by changing the saturation by 10% instead.



 C6AEB2

 C6AEB2

FFFFFF

 AB9397

 FFE5EA

 907A7D

 766164

 5D494D

 463236

 2F1D21

 1C0409

 000000

 C6AEB2

 C6AEB2

 C69AA1

 C6C2C3

 C68691

 C6D6D3

 C67380

 C6E9E4

 C65F70

 C6FDF4

 C64B5F

 C6FFFF

 C6374F

 C6233E

 C6102E

 C60021

# Harmonies

## Analogous

The Analogous color harmony consists of three colors that are next to each other on the color wheel.



C1AFBB



C6AEB2



C6AFAA

# Triad

The Triadic color harmony groups three colors that are evenly spaced from another and form a triangle on the color wheel.



C6AEB2



AFB6A6



A4B6C3

# Complementary

The Complementary color scheme is a pair of colors which are on the opposite of each other on the color wheel.



C6AEB2



AEC6C2

# Split Complementary

Split-complementary colors differ from the complementary color scheme. The scheme consists of three colors, the original color and two neighbors of the complement color.



9FB8BE



C6AEB2



A6B8AD

# Square

The Square scheme is like the rectangle color scheme, but the four colors are evenly spaced on the color wheel.



C6AEB2



B9B4A3



A0B9B5



ADB4C5

# Rectangle

The Rectangle color scheme consists of four colors that form a rectangle on the color wheel.



C6AEB2



C3B0A6



A0B9B5



A2B7C2



# Sweetspot

The Sweet Spot groups the original color and five complimentary colors.



C6AEB2



FFF5F6



C2AEC6



80797A



000000



808080



# Same Dimension

The Same Dimension uses a secret algorithm to generate beautiful new colors.



C6AEB2



FFD9DF



C6B6AE



635A5B



A3001B



240006



# Inverse Universe

The Inverse Universe completely reimagines the original color for something new.



C6AEB2



FFD9DF



AEBEC6



635A5B



A3001B

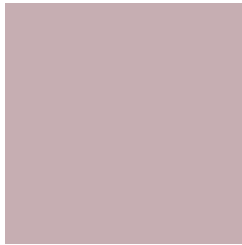


240006



# Previews

## White Background



This preview shows how the Hex color C6AEB2 looks on a white background.

## Color Contrast Check

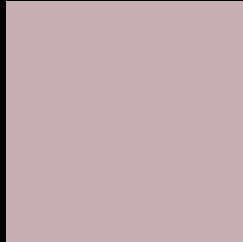
Large Text (above 18pt) WCAG AA × Fail

Any Text WCAG AA × Fail

Large Text (above 18pt) WCAG AAA × Fail

Any Text WCAG AAA × Fail

# Black Background



This preview shows how the Hex color C6AEB2 looks on a black background.

## Color Contrast Check

Large Text (above 18pt) WCAG AA ✓ Pass

Any Text WCAG AA ✓ Pass

Large Text (above 18pt) WCAG AAA ✓ Pass

Any Text WCAG AAA ✓ Pass

If you want to check with other color combinations, try the [Color Contrast Checker](#).



## Hex C6AEB2 Background



This preview shows how black text looks on a background with the Hex color C6AEB2.

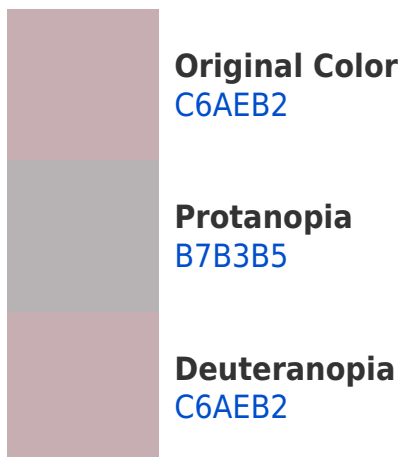


This preview shows how white text looks on a background with the Hex color C6AEB2.

# Color Blindness Simulation

Color vision deficiency is a very complex topic, and I could not describe the different causes any better than Wikipedia does, so if you want to learn more, you should check out their [article about color blindness](#).

## Dichromacy





**Tritanopia**  
C7ADBA

# Trichromacy



**Original Color**  
C6AEB2

**Protanomaly**  
BCB1B4

**Deuteranomaly**  
C6AEB2

**Tritanomaly**  
C7ADB7

# Monochromacy



**Original Color**  
C6AEB2

**Achromatopsia**  
B6B6B6

**Achromatomaly**  
BCB3B5

# CSS Examples

## Text

The CSS property to change the color of the text to Hex C6AEB2 is called "color". The color property can be set on classes, ids or directly on the HTML element.

This example shows how text in the color #C6AEB2 looks like.

```
.text, #text, p{  
    color:#C6AEB2  
}
```

If you want to add a text shadow in that color use the text-shadow property, you can generate a text shadow directly with our [CSS Text Shadow Generator](#).

Here you see how black text with a 4 pixel #C6AEB2 colored shadow looks like.

```
.shadow{ text-shadow: 4px 4px 2px #C6AEB2
}
```

## Border

The CSS property to change the border of an element to Hex C6AEB2 is called "border". The border property can be set on classes, ids or directly on the HTML element.

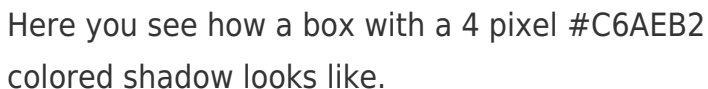
This example shows the color as border, it can be applied via the CSS property "border" or "border-color".

```
.border, #border, table{ border:4px solid
#C6AEB2 }
```

If only the border color should be changed use the property `border-color`.

```
.border{ border-color:#C6AEB2 }
```

If you want to add a box shadow in that color use:



Here you see how a box with a 4 pixel #C6AEB2 colored shadow looks like.

```
.boxshadow{ -moz-box-shadow:4px 4px 4px  
4px #C6AEB2; -webkit-box-shadow:4px 4px  
4px 4px #C6AEB2; box-shadow:4px 4px 4px  
4px #C6AEB2 }
```

# Background

The CSS property to change the background color of an element to Hex C6AEB2 is called "background". The background property can be set on classes, ids or directly on the HTML element.

```
.background, #background, body{  
background:#C6AEB2 }
```

If only the background color should be changed can be used:

```
.background{ background-color:#C6AEB2 }
```

This example shows the color as background, it is applied via the CSS property "background".

To optimize and compress your CSS code, you can use our [online CSS compressor and optimizer](#) based on csstidy. If you want to create a linear or radial gradient as background or border, check our [CSS Gradient Generator](#).



Hey! You found this booklet interesting? Support Converting Colors with the new Membership Option!

The pro membership hides all ads, plus gives you double the colors in the color bucket, and more awesome pro features!

**[Learn more, Memberships starting at \\$2.50/m!](#)**

**Follow me  
on Twitter!**

@ConvertingColor