

Converting Colors

Hex(C6AEB4)

Have a look what the booklet for
Hex(C6AEB4) contains.

Hex(C6AEB4)	3
<i>Conversions</i>	4
<i>Details</i>	6
<i>Harmonies</i>	11
<i>Previews</i>	23
<i>Color Blindness Simulation</i>	26
<i>CSS Examples</i>	29

Color

Hex(C6AEB4)

Conversions

Conversions Part 1

Format	Color
Hex	C6AEB4
RGB	198, 174, 180
RGB Percent	78%, 68%, 71%
CMY	0.2235, 0.3176, 0.2941
CMYK	0.00, 0.12, 0.09, 0.22
HSL	345°, 17%, 73%
HSV	345°, 12%, 78%
XYZ	46.6630, 45.5732, 49.5171
YIQ	181.8600, 12.3780, 6.9540

Conversions

Conversions Part 2

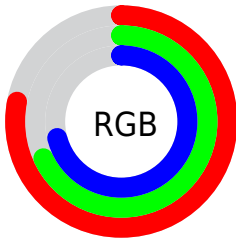
Format	Color
RYB	198, 174, 180
Decimal	13020852
CIELab	73.27, 9.67, 0.11
CIELCh	73, 9.666, 0.640
Yxy	45.5732, 0.3292, 0.3215
Android (android.graphics.Color)	4291210932 (0xFFC6AEB4)
YUV	181.8600, -0.9170, 14.1548
Hunter-Lab	67.5079, 5.2444, 3.7662

Details

The Hex color **C6AEB4** is a light color, and the websafe version is hex **CC9999**. A complement of this color would be **AEC6C0**, and the grayscale version is **B6B6B6**.

A 20% lighter version of the original color is **FFE6EC**, and **907A7F** is the 20% darker color. If you saturate the color by 10%, you get **C69AA5**, and if you desaturate by 10%, it is **C6C2C3**.

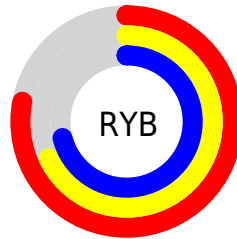
Distribution



Red (78%)

Green (68%)

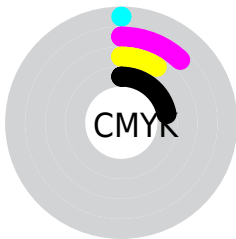
Blue (71%)



Red (78%)

Yellow (68%)

Blue (71%)

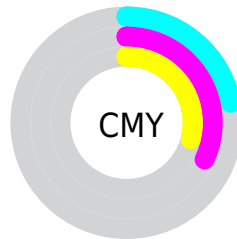


Cyan (0%)

Magenta (12%)

Yellow (9%)

Black (22%)



Cyan (22%)

Magenta (32%)

Yellow (29%)

Brightness & Saturation Gradients

These gradients show how the Hex color C6AEB4 changes by changing the brightness by 10 percent. The first figure shows a shift by +10% for each color and the second figure -10%.

Similar to the brightness gradients but the following saturation gradients show a change of the Hex color C6AEB4 by changing the saturation by 10% instead.



C6AEB4



C6AEB4

FFFFFF



AB9399



FFE6EC



907A7F



766166



5D494E



463238



2F1D22



1C040C



000000



C6AEB4



C6AEB4

 C69AA5

 C6C2C3

 C68696

 C6D6D2

 C67387

 C6E9E1

 C65F79

 C6FDEF

 C64B6A

 C6FFFE

 C6375B

 C6FFFF

 C6234C

 C6103D

 C60032

Harmonies

Analogous

The Analogous color harmony consists of three colors that are next to each other on the color wheel.



C0AFBD



C6AEB4



C7AFAB

Triad

The Triadic color harmony groups three colors that are evenly spaced from another and form a triangle on the color wheel.



C6AEB4



B1B6A5



A2B7C3

Complementary

The Complementary color scheme is a pair of colors which are on the opposite of each other on the color wheel.



C6AEB4



AEC6C0

Split Complementary

Split-complementary colors differ from the complementary color scheme. The scheme consists of three colors, the original color and two neighbors of the complement color.



9EB9BD



C6AEB4



A7B8AB

Square

The Square scheme is like the rectangle color scheme, but the four colors are evenly spaced on the color wheel.



C6AEB4



BBB3A2



A0B9B4



ABB5C5

Rectangle

The Rectangle color scheme consists of four colors that form a rectangle on the color wheel.



C6AEB4



C5B0A7



A0B9B4



A0B8C1

Sweetspot

The Sweet Spot groups the original color and five complimentary colors.



C6AEB4



FFF5F7



C0AEC6



80797B



000000



808080

Same Dimension

The Same Dimension uses a secret algorithm to generate beautiful new colors.



C6AEB4



FFD9E2



C6B4AE



635A5C



A30029



240009

Inverse Universe

The Inverse Universe completely reimagines the original color for something new.



C6AEB4



FFD9E2



AEC0C6



635A5C



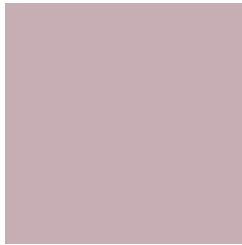
A30029



240009

Previews

White Background



This preview shows how the Hex color C6AEB4 looks on a white background.

Color Contrast Check

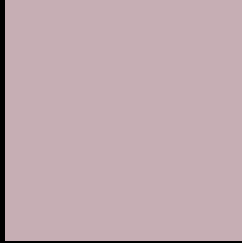
Large Text (above 18pt) WCAG AA × Fail

Any Text WCAG AA × Fail

Large Text (above 18pt) WCAG AAA × Fail

Any Text WCAG AAA × Fail

Black Background



This preview shows how the Hex color C6AEB4 looks on a black background.

Color Contrast Check

Large Text (above 18pt) WCAG AA ✓ Pass

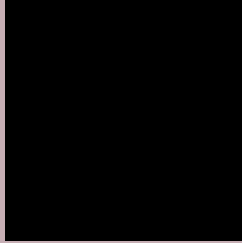
Any Text WCAG AA ✓ Pass

Large Text (above 18pt) WCAG AAA ✓ Pass

Any Text WCAG AAA ✓ Pass

If you want to check with other color combinations, try the [Color Contrast Checker](#).

Hex C6AEB4 Background



This preview shows how black text looks on a background with the Hex color C6AEB4.



This preview shows how white text looks on a background with the Hex color C6AEB4.

Color Blindness Simulation

Color vision deficiency is a very complex topic, and I could not describe the different causes any better than Wikipedia does, so if you want to learn more, you should check out their [article about color blindness](#).

Dichromacy





Tritanopia
C7ADBB

Trichromacy



Original Color
C6AEB4

Protanomaly
BCB1B6

Deuteranomaly
C5AEB4

Tritanomaly
C7ADB8

Monochromacy



Original Color
C6AEB4

Achromatopsia
B6B6B6

Achromatomaly
BCB3B5

CSS Examples

Text

The CSS property to change the color of the text to Hex C6AEB4 is called "color". The color property can be set on classes, ids or directly on the HTML element.

This example shows how text in the color #C6AEB4 looks like.

```
.text, #text, p{  
    color:#C6AEB4  
}
```

If you want to add a text shadow in that color use the text-shadow property, you can generate a text shadow directly with our [CSS Text Shadow Generator](#).

Here you see how black text with a 4 pixel #C6AEB4 colored shadow looks like.

```
.shadow{ text-shadow: 4px 4px 2px #C6AEB4
}
```

Border

The CSS property to change the border of an element to Hex C6AEB4 is called "border". The border property can be set on classes, ids or directly on the HTML element.

This example shows the color as border, it can be applied via the CSS property "border" or "border-color".

```
.border, #border, table{ border:4px solid
#C6AEB4 }
```

If only the border color should be changed use the property `border-color`.

```
.border{ border-color:#C6AEB4 }
```

If you want to add a box shadow in that color use:

Here you see how a box with a 4 pixel #C6AEB4 colored shadow looks like.

```
.boxshadow{ -moz-box-shadow:4px 4px 4px  
4px #C6AEB4; -webkit-box-shadow:4px 4px  
4px 4px #C6AEB4; box-shadow:4px 4px 4px  
4px #C6AEB4 }
```

Background

The CSS property to change the background color of an element to Hex C6AEB4 is called "background". The background property can be set on classes, ids or directly on the HTML element.

```
.background, #background, body{  
background:#C6AEB4 }
```

If only the background color should be changed can be used:

```
.background{ background-color:#C6AEB4 }
```

This example shows the color as background, it is applied via the CSS property "background".

To optimize and compress your CSS code, you can use our [online CSS compressor and optimizer](#) based on csstidy. If you want to create a linear or radial gradient as background or border, check our [CSS Gradient Generator](#).

Hey! You found this booklet interesting? Support Converting Colors with the new Membership Option!

The pro membership hides all ads, plus gives you double the colors in the color bucket, and more awesome pro features!

[Learn more, Memberships starting at \\$2.50/m!](#)

**Follow me
on Twitter!**

@ConvertingColor