

# Converting Colors

Hex(C6B2AC)

Have a look what the booklet for  
Hex(C6B2AC) contains.

<b>Hex(C6B2AC)</b> .....	3
<i><b>Conversions</b></i> .....	4
<i><b>Details</b></i> .....	6
<i><b>Harmonies</b></i> .....	11
<i><b>Previews</b></i> .....	23
<i><b>Color Blindness Simulation</b></i> .....	26
<i><b>CSS Examples</b></i> .....	29

# **Color**

**Hex(C6B2AC)**

# Conversions

## Conversions Part 1

<b>Format</b>	<b>Color</b>
Hex	C6B2AC
RGB	198, 178, 172
RGB Percent	78%, 70%, 67%
CMY	0.2235, 0.3020, 0.3255
CMYK	0.00, 0.10, 0.13, 0.22
HSL	14°, 19%, 73%
HSV	14°, 13%, 78%
XYZ	46.6555, 46.8251, 45.6089
YIQ	183.2960, 13.8460, 2.3740

# Conversions

## Conversions Part 2

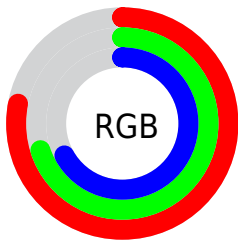
<b>Format</b>	<b>Color</b>
<b>R<sub>YB</sub></b>	198, 180, 172
Decimal	13021868
CIE <sub>Lab</sub>	74.08, 6.15, 5.66
CIE <sub>LCh</sub>	74, 8.362, 42.622
Yxy	46.8251, 0.3354, 0.3367
Android (android.graphics.Color)	4291211948 (0xFFC6B2AC)
YUV	183.2960, -5.5689, 12.8954
Hunter-Lab	68.4289, 1.9525, 8.3825

# Details

The Hex color **C6B2AC** is a light color, and the websafe version is hex **CCCCCC**. A complement of this color would be **ACC0C6**, and the grayscale version is **B7B7B7**.

A 20% lighter version of the original color is **FFEAE3**, and **907D78** is the 20% darker color. If you saturate the color by 10%, you get **C6A398**, and if you desaturate by 10%, it is **C6C1C0**.

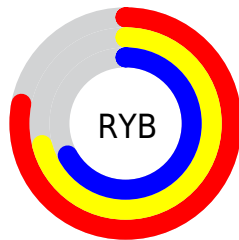
# Distribution



Red (78%)

Green (70%)

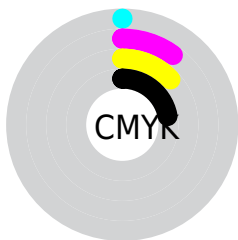
Blue (67%)



Red (78%)

Yellow (71%)

Blue (67%)

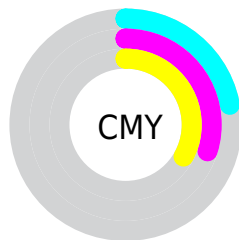


Cyan (0%)

Magenta (10%)

Yellow (13%)

Black (22%)



Cyan (22%)

Magenta (30%)

Yellow (33%)

# Brightness & Saturation Gradients

These gradients show how the Hex color C6B2AC changes by changing the brightness by 10 percent. The first figure shows a shift by +10% for each color and the second figure -10%.

Similar to the brightness gradients but the following saturation gradients show a change of the Hex color C6B2AC by changing the saturation by 10% instead.



 C6B2AC

FFFFFF

 FFEAE3

 C6B2AC

 AB9791

 907D78

 76645F

 5D4D47

 453631

 2F201C

 1C0A01

 000000

 C6B2AC

 C6B2AC

 C6A398

 C6C1C0

 C69484

 C6D0D4

 C68471

 C6E0E7

 C6755D

 C6EFFB

 C66649

 C6FEFF

 C65735

 C6FFFF

 C64721

 C6380E

 C62E00

# Harmonies

## Analogous

The Analogous color harmony consists of three colors that are next to each other on the color wheel.



C7B1B3



C6B2AC



C1B4A8

# Triad

The Triadic color harmony groups three colors that are evenly spaced from another and form a triangle on the color wheel.



C6B2AC



A8BAB1



B2B6C5

# Complementary

The Complementary color scheme is a pair of colors which are on the opposite of each other on the color wheel.



C6B2AC



ACC0C6

# Split Complementary

Split-complementary colors differ from the complementary color scheme. The scheme consists of three colors, the original color and two neighbors of the complement color.



AAB8C4



C6B2AC



A4BBB9

# Square

The Square scheme is like the rectangle color scheme, but the four colors are evenly spaced on the color wheel.



C6B2AC



B0B9AB



A4BAC0



BCB3C1

# Rectangle

The Rectangle color scheme consists of four colors that form a rectangle on the color wheel.



C6B2AC



BCB6A7



A4BAC0



AFB6C5



# Sweetspot

The Sweet Spot groups the original color and five complimentary colors.



C6B2AC



FFF7F5



C6ACC0



807B79



000000



808080

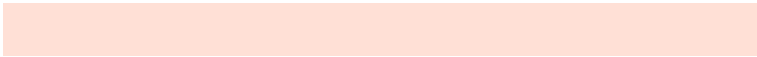


# Same Dimension

The Same Dimension uses a secret algorithm to generate beautiful new colors.



C6B2AC



FFE0D6



C6BFAC



635C5A



A32600



240800

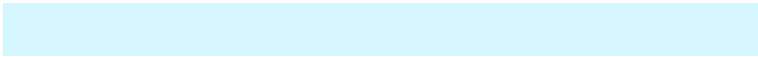


# Inverse Universe

The Inverse Universe completely reimagines the original color for something new.



ACC0C6



D6F6FF



ACB3C6



5A6163



007EA3



001B24



# Previews

## White Background



This preview shows how the Hex color C6B2AC looks on a white background.

## Color Contrast Check

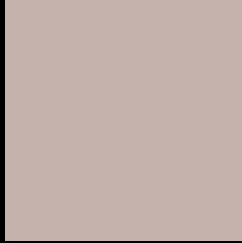
Large Text (above 18pt) WCAG AA × Fail

Any Text WCAG AA × Fail

Large Text (above 18pt) WCAG AAA × Fail

Any Text WCAG AAA × Fail

# Black Background



This preview shows how the Hex color C6B2AC looks on a black background.

## Color Contrast Check

Large Text (above 18pt) WCAG AA ✓ Pass

Any Text WCAG AA ✓ Pass

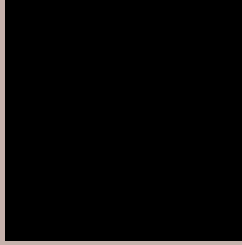
Large Text (above 18pt) WCAG AAA ✓ Pass

Any Text WCAG AAA ✓ Pass

If you want to check with other color combinations, try the [Color Contrast Checker](#).



## Hex C6B2AC Background



This preview shows how black text looks on a background with the Hex color C6B2AC.



This preview shows how white text looks on a background with the Hex color C6B2AC.

# Color Blindness Simulation

Color vision deficiency is a very complex topic, and I could not describe the different causes any better than Wikipedia does, so if you want to learn more, you should check out their [article about color blindness](#).

## Dichromacy





**Tritanopia**  
C8AFBD

# Trichromacy



**Original Color**  
C6B2AC

**Protanomaly**  
BFB4AD

**Deuteranomaly**  
C9B1AC

**Tritanomaly**  
C7B0B7

# Monochromacy



**Original Color**  
C6B2AC

**Achromatopsia**  
B7B7B7

**Achromatomaly**  
BCB5B3

# CSS Examples

## Text

The CSS property to change the color of the text to Hex C6B2AC is called "color". The color property can be set on classes, ids or directly on the HTML element.

This example shows how text in the color #C6B2AC looks like.

```
.text, #text, p{  
    color:#C6B2AC  
}
```

If you want to add a text shadow in that color use the text-shadow property, you can generate a text shadow directly with our [CSS Text Shadow Generator](#).

Here you see how black text with a 4 pixel #C6B2AC colored shadow looks like.

```
.shadow{ text-shadow: 4px 4px 2px #C6B2AC
}
```

## Border

The CSS property to change the border of an element to Hex C6B2AC is called "border". The border property can be set on classes, ids or directly on the HTML element.

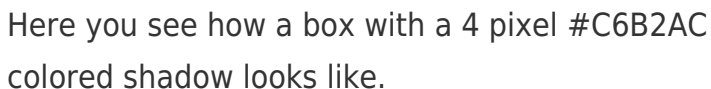
This example shows the color as border, it can be applied via the CSS property "border" or "border-color".

```
.border, #border, table{ border:4px solid
#C6B2AC }
```

If only the border color should be changed use the property `border-color`.

```
.border{ border-color:#C6B2AC }
```

If you want to add a box shadow in that color use:



Here you see how a box with a 4 pixel #C6B2AC colored shadow looks like.

```
.boxshadow{ -moz-box-shadow:4px 4px 4px  
4px #C6B2AC; -webkit-box-shadow:4px 4px  
4px 4px #C6B2AC; box-shadow:4px 4px 4px  
4px #C6B2AC }
```

# Background

The CSS property to change the background color of an element to Hex C6B2AC is called "background". The background property can be set on classes, ids or directly on the HTML element.

```
.background, #background, body{  
background:#C6B2AC }
```

If only the background color should be changed can be used:

```
.background{ background-color:#C6B2AC }
```

This example shows the color as background, it is applied via the CSS property "background".

To optimize and compress your CSS code, you can use our [online CSS compressor and optimizer](#) based on csstidy. If you want to create a linear or radial gradient as background or border, check our [CSS Gradient Generator](#).



Hey! You found this booklet interesting? Support Converting Colors with the new Membership Option!

The pro membership hides all ads, plus gives you double the colors in the color bucket, and more awesome pro features!

**[Learn more, Memberships starting at \\$2.50/m!](#)**

**Follow me  
on Twitter!**

@ConvertingColor