

# Converting Colors

Hex(C6B2B9)

Have a look what the booklet for  
Hex(C6B2B9) contains.

<b>Hex(C6B2B9)</b> .....	3
<i><b>Conversions</b></i> .....	4
<i><b>Details</b></i> .....	6
<i><b>Harmonies</b></i> .....	11
<i><b>Previews</b></i> .....	23
<i><b>Color Blindness Simulation</b></i> .....	26
<i><b>CSS Examples</b></i> .....	29

# **Color**

**Hex(C6B2B9)**

# Conversions

## Conversions Part 1

Format	Color
Hex	C6B2B9
RGB	198, 178, 185
RGB Percent	78%, 70%, 73%
CMY	0.2235, 0.3020, 0.2745
CMYK	0.00, 0.10, 0.07, 0.22
HSL	339°, 15%, 74%
HSV	339°, 10%, 78%
XYZ	47.9661, 47.3493, 52.5102
YIQ	184.7780, 9.6730, 6.4170

# Conversions

## Conversions Part 2

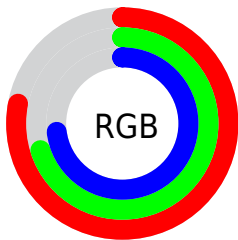
Format	Color
<a href="#">RYB</a>	<a href="#">198, 178, 185</a>
Decimal	<a href="#">13021881</a>
CIELab	<a href="#">74.41, 8.37, -0.96</a>
CIELCh	<a href="#">74, 8.423, 353.480</a>
Yxy	<a href="#">47.3493, 0.3245, 0.3203</a>
Android (android.graphics.Color)	<a href="#">4291211961 (0xFFC6B2B9)</a>
YUV	<a href="#">184.7780, 0.1094, 11.5957</a>
Hunter-Lab	<a href="#">68.8109, 4.0082, 2.9229</a>

# Details

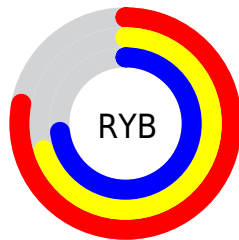
The Hex color **C6B2B9** is a light color, and the websafe version is hex **CCCCCC**. A complement of this color would be **B2C6BF**, and the grayscale version is **B9B9B9**.

A 20% lighter version of the original color is **FFEAF1**, and **907D84** is the 20% darker color. If you saturate the color by 10%, you get **C69EAC**, and if you desaturate by 10%, it is **C6C6C6**.

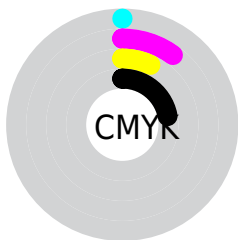
# Distribution



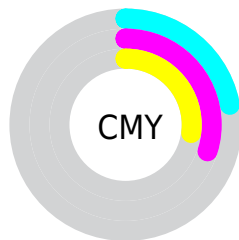
- Red (78%)
- Green (70%)
- Blue (73%)



- Red (78%)
- Yellow (70%)
- Blue (73%)



- Cyan (0%)
- Magenta (10%)
- Yellow (7%)
- Black (22%)



- Cyan (22%)
- Magenta (30%)
- Yellow (27%)

# Brightness & Saturation Gradients

These gradients show how the Hex color C6B2B9 changes by changing the brightness by 10 percent. The first figure shows a shift by +10% for each color and the second figure -10%.

Similar to the brightness gradients but the following saturation gradients show a change of the Hex color C6B2B9 by changing the saturation by 10% instead.



 C6B2B9

FFFFFF

 FFEAF1

 C6B2B9

 AB979E

 907D84

 76646B

 5E4C53

 46363C

 2F2026

 1B0A11

 000000

 C6B2B9

 C6B2B9

 C69EAC

 C6C6C6

 C68A9F

 C6DAD3

 C67792

 C6EDE0

 C66386

 C6FFEC

 C64F79

 C6FFF9

 C63B6C

 C6FFFF

 C6275F

 C61452

 C60045

# Harmonies

## Analogous

The Analogous color harmony consists of three colors that are next to each other on the color wheel.



C0B3C0



C6B2B9



C8B2B1

# Triad

The Triadic color harmony groups three colors that are evenly spaced from another and form a triangle on the color wheel.



C6B2B9



B7B8A9



A6BAC3

# Complementary

The Complementary color scheme is a pair of colors which are on the opposite of each other on the color wheel.



C6B2B9



B2C6BF

# Split Complementary

Split-complementary colors differ from the complementary color scheme. The scheme consists of three colors, the original color and two neighbors of the complement color.



A4BCBD



C6B2B9



AEBAAE

# Square

The Square scheme is like the rectangle color scheme, but the four colors are evenly spaced on the color wheel.



C6B2B9



BFB6A8



A7BCB5



ADB8C6

# Rectangle

The Rectangle color scheme consists of four colors that form a rectangle on the color wheel.



C6B2B9



C7B3AD



A7BCB5



A5BBC1

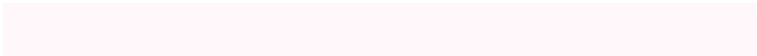


# Sweetspot

The Sweet Spot groups the original color and five complimentary colors.



C6B2B9



FFF7FA



BFB2C6



807A7C



000000



808080



# Same Dimension

The Same Dimension uses a secret algorithm to generate beautiful new colors.



C6B2B9



FFE0EB



C6B5B2



635A5D



A30039



24000C



# Inverse Universe

The Inverse Universe completely reimagines the original color for something new.



C6B2B9



FFE0EB



B2C3C6



635A5D



A30039

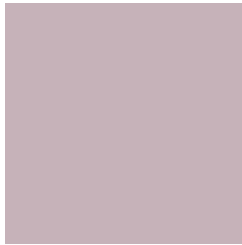


24000C



# Previews

## White Background



This preview shows how the Hex color C6B2B9 looks on a white background.

## Color Contrast Check

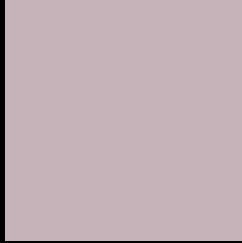
Large Text (above 18pt) WCAG AA × Fail

Any Text WCAG AA × Fail

Large Text (above 18pt) WCAG AAA × Fail

Any Text WCAG AAA × Fail

# Black Background



This preview shows how the Hex color C6B2B9 looks on a black background.

## Color Contrast Check

Large Text (above 18pt) WCAG AA ✓ Pass

Any Text WCAG AA ✓ Pass

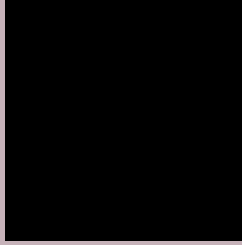
Large Text (above 18pt) WCAG AAA ✓ Pass

Any Text WCAG AAA ✓ Pass

If you want to check with other color combinations, try the [Color Contrast Checker](#).



## Hex C6B2B9 Background



This preview shows how black text looks on a background with the Hex color C6B2B9.



This preview shows how white text looks on a background with the Hex color C6B2B9.

# Color Blindness Simulation

Color vision deficiency is a very complex topic, and I could not describe the different causes any better than Wikipedia does, so if you want to learn more, you should check out their [article about color blindness](#).

## Dichromacy



**Original Color**  
C6B2B9

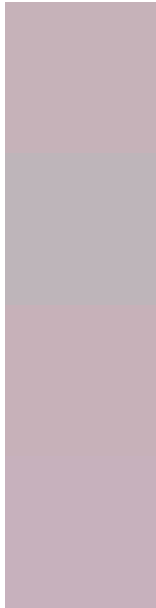
**Protanopia**  
B9B6BB

**Deuteranopia**  
C8B1B9



**Tritanopia**  
C7B1BF

# Trichromacy



**Original Color**  
C6B2B9

**Protanomaly**  
BEB5BA

**Deuteranomaly**  
C7B1B9

**Tritanomaly**  
C7B1BD

# Monochromacy



**Original Color**  
C6B2B9

**Achromatopsia**  
B9B9B9

**Achromatomaly**  
BEB6B9

# CSS Examples

## Text

The CSS property to change the color of the text to Hex C6B2B9 is called "color". The color property can be set on classes, ids or directly on the HTML element.

This example shows how text in the color #C6B2B9 looks like.

```
.text, #text, p{  
    color:#C6B2B9  
}
```

If you want to add a text shadow in that color use the text-shadow property, you can generate a text shadow directly with our [CSS Text Shadow Generator](#).

Here you see how black text with a 4 pixel #C6B2B9 colored shadow looks like.

```
.shadow{ text-shadow: 4px 4px 2px #C6B2B9
}
```

## Border

The CSS property to change the border of an element to Hex C6B2B9 is called "border". The border property can be set on classes, ids or directly on the HTML element.

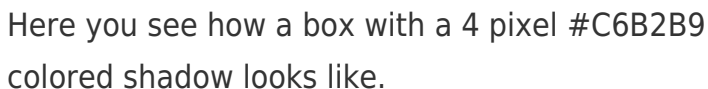
This example shows the color as border, it can be applied via the CSS property "border" or "border-color".

```
.border, #border, table{ border:4px solid
#C6B2B9 }
```

If only the border color should be changed use the property `border-color`.

```
.border{ border-color:#C6B2B9 }
```

If you want to add a box shadow in that color use:



Here you see how a box with a 4 pixel #C6B2B9 colored shadow looks like.

```
.boxshadow{ -moz-box-shadow:4px 4px 4px  
4px #C6B2B9; -webkit-box-shadow:4px 4px  
4px 4px #C6B2B9; box-shadow:4px 4px 4px  
4px #C6B2B9 }
```

# Background

The CSS property to change the background color of an element to Hex C6B2B9 is called "background". The background property can be set on classes, ids or directly on the HTML element.

```
.background, #background, body{  
background:#C6B2B9 }
```

If only the background color should be changed can be used:

```
.background{ background-color:#C6B2B9 }
```

This example shows the color as background, it is applied via the CSS property "background".

To optimize and compress your CSS code, you can use our [online CSS compressor and optimizer](#) based on csstidy. If you want to create a linear or radial gradient as background or border, check our [CSS Gradient Generator](#).



Hey! You found this booklet interesting? Support Converting Colors with the new Membership Option!

The pro membership hides all ads, plus gives you double the colors in the color bucket, and more awesome pro features!

**[Learn more, Memberships starting at \\$2.50/m!](#)**

**Follow me  
on Twitter!**

@ConvertingColor