

# Converting Colors

Hex(C6B3B7)

Have a look what the booklet for  
Hex(C6B3B7) contains.

<b>Hex(C6B3B7)</b> .....	3
<i><b>Conversions</b></i> .....	4
<i><b>Details</b></i> .....	6
<i><b>Harmonies</b></i> .....	11
<i><b>Previews</b></i> .....	23
<i><b>Color Blindness Simulation</b></i> .....	26
<i><b>CSS Examples</b></i> .....	29

# **Color**

**Hex(C6B3B7)**

# Conversions

## Conversions Part 1

<b>Format</b>	<b>Color</b>
Hex	C6B3B7
RGB	198, 179, 183
RGB Percent	78%, 70%, 72%
CMY	0.2235, 0.2980, 0.2824
CMYK	0.00, 0.10, 0.08, 0.22
HSL	347°, 14%, 74%
HSV	347°, 10%, 78%
XYZ	47.9560, 47.6649, 51.4724
YIQ	185.1370, 10.0400, 5.2720

# Conversions

## Conversions Part 2

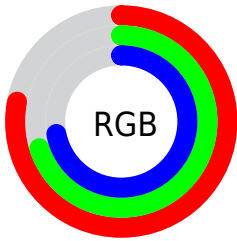
Format	Color
<a href="#">RYB</a>	<a href="#">198, 179, 183</a>
Decimal	<a href="#">13022135</a>
CIELab	<a href="#">74.61, 7.48, 0.43</a>
CIElCh	<a href="#">75, 7.489, 3.285</a>
Yxy	<a href="#">47.6649, 0.3260, 0.3240</a>
Android (android.graphics.Color)	<a href="#">4291212215</a> ( <a href="#">0xFFC6B3B7</a> )
YUV	<a href="#">185.1370, -1.0535, 11.2809</a>
Hunter-Lab	<a href="#">69.0397, 3.1692, 4.1243</a>

# Details

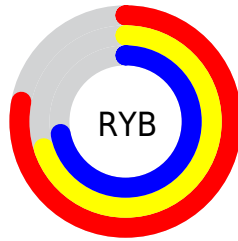
The Hex color **C6B3B7** is a light color, and the websafe version is hex **CCCCCC**. A complement of this color would be **B3C6C2**, and the grayscale version is **B9B9B9**.

A 20% lighter version of the original color is **FFEBEF**, and **907E82** is the 20% darker color. If you saturate the color by 10%, you get **C69FA7**, and if you desaturate by 10%, it is **C6C7C7**.

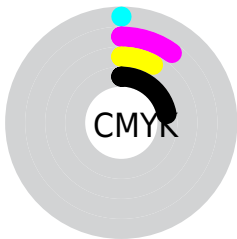
# Distribution



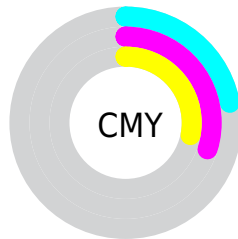
- Red (78%)
- Green (70%)
- Blue (72%)



- Red (78%)
- Yellow (70%)
- Blue (72%)



- Cyan (0%)
- Magenta (10%)
- Yellow (8%)
- Black (22%)



- Cyan (22%)
- Magenta (30%)
- Yellow (28%)

# Brightness & Saturation Gradients

These gradients show how the Hex color C6B3B7 changes by changing the brightness by 10 percent. The first figure shows a shift by +10% for each color and the second figure -10%.

Similar to the brightness gradients but the following saturation gradients show a change of the Hex color C6B3B7 by changing the saturation by 10% instead.



 C6B3B7

 C6B3B7

FFFFFF

 AB989C

 FFEBEF

 907E82

 766569

 5E4D51

 46373A

 2F2124

 1B0B0F

 000000

 C6B3B7

 C6B3B7

 C69FA7

 C6C7C7

 C68B98

 C6DBD6

 C67888

 C6EEEE6

 C66478

 C6FFF6

 C65069

 C6FFFF

 C63C59

 C6284A

 C6153A

 C6012A

# Harmonies

## Analogous

The Analogous color harmony consists of three colors that are next to each other on the color wheel.



C1B4BE



C6B3B7



C7B3B0

# Triad

The Triadic color harmony groups three colors that are evenly spaced from another and form a triangle on the color wheel.



C6B3B7



B5B9AC



AABAC4

# Complementary

The Complementary color scheme is a pair of colors which are on the opposite of each other on the color wheel.



C6B3B7



B3C6C2

# Split Complementary

Split-complementary colors differ from the complementary color scheme. The scheme consists of three colors, the original color and two neighbors of the complement color.



A7BBBF



C6B3B7



ADBBB1

# Square

The Square scheme is like the rectangle color scheme, but the four colors are evenly spaced on the color wheel.



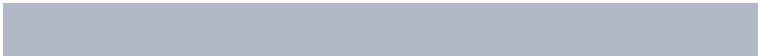
C6B3B7



BDB7AA



A8BCB8



B2B8C5

# Rectangle

The Rectangle color scheme consists of four colors that form a rectangle on the color wheel.



C6B3B7



C5B4AD



A8BCB8



A9BBC2



# Sweetspot

The Sweet Spot groups the original color and five complimentary colors.



C6B3B7



FFF7F9



C2B3C6



807A7B



000000



808080



# Same Dimension

The Same Dimension uses a secret algorithm to generate beautiful new colors.



C6B3B7



FFE0E7



C6B8B3



635A5C



A30022



240008



# Inverse Universe

The Inverse Universe completely reimagines the original color for something new.



C6B3B7



FFE0E7



B3C1C6



635A5C



A30022

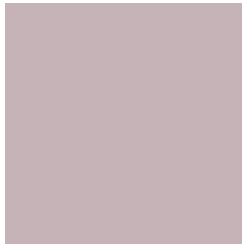


240008



# Previews

## White Background



This preview shows how the Hex color C6B3B7 looks on a white background.

## Color Contrast Check

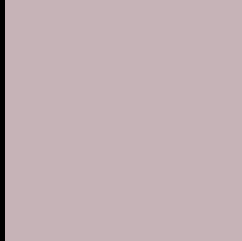
Large Text (above 18pt) WCAG AA × Fail

Any Text WCAG AA × Fail

Large Text (above 18pt) WCAG AAA × Fail

Any Text WCAG AAA × Fail

# Black Background



This preview shows how the Hex color C6B3B7 looks on a black background.

## Color Contrast Check

Large Text (above 18pt) WCAG AA ✓ Pass

Any Text WCAG AA ✓ Pass

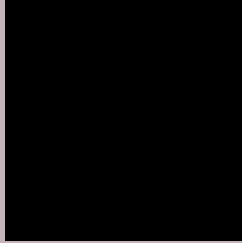
Large Text (above 18pt) WCAG AAA ✓ Pass

Any Text WCAG AAA ✓ Pass

If you want to check with other color combinations, try the [Color Contrast Checker](#).



## Hex C6B3B7 Background



This preview shows how black text looks on a background with the Hex color C6B3B7.



This preview shows how white text looks on a background with the Hex color C6B3B7.

# Color Blindness Simulation

Color vision deficiency is a very complex topic, and I could not describe the different causes any better than Wikipedia does, so if you want to learn more, you should check out their [article about color blindness](#).

## Dichromacy





**Tritanopia**  
C7B2C0

# Trichromacy



**Original Color**  
C6B3B7

**Protanomaly**  
BEB6B8

**Deuteranomaly**  
C8B2B7

**Tritanomaly**  
C7B2BD

# Monochromacy



**Original Color**  
C6B3B7

**Achromatopsia**  
B9B9B9

**Achromatomaly**  
BEB7B8

# CSS Examples

## Text

The CSS property to change the color of the text to Hex C6B3B7 is called "color". The color property can be set on classes, ids or directly on the HTML element.

This example shows how text in the color #C6B3B7 looks like.

```
.text, #text, p{  
    color:#C6B3B7  
}
```

If you want to add a text shadow in that color use the text-shadow property, you can generate a text shadow directly with our [CSS Text Shadow Generator](#).

Here you see how black text with a 4 pixel #C6B3B7 colored shadow looks like.

```
.shadow{ text-shadow: 4px 4px 2px #C6B3B7
}
```

## Border

The CSS property to change the border of an element to Hex C6B3B7 is called "border". The border property can be set on classes, ids or directly on the HTML element.

This example shows the color as border, it can be applied via the CSS property "border" or "border-color".

```
.border, #border, table{ border:4px solid
#C6B3B7 }
```

If only the border color should be changed use the property `border-color`.

```
.border{ border-color:#C6B3B7 }
```

If you want to add a box shadow in that color use:

Here you see how a box with a 4 pixel #C6B3B7 colored shadow looks like.

```
.boxshadow{ -moz-box-shadow:4px 4px 4px  
4px #C6B3B7; -webkit-box-shadow:4px 4px  
4px 4px #C6B3B7; box-shadow:4px 4px 4px  
4px #C6B3B7 }
```

# Background

The CSS property to change the background color of an element to Hex C6B3B7 is called "background". The background property can be set on classes, ids or directly on the HTML element.

```
.background, #background, body{  
background:#C6B3B7 }
```

If only the background color should be changed can be used:

```
.background{ background-color:#C6B3B7 }
```

This example shows the color as background, it is applied via the CSS property "background".

To optimize and compress your CSS code, you can use our [online CSS compressor and optimizer](#) based on csstidy. If you want to create a linear or radial gradient as background or border, check our [CSS Gradient Generator](#).



Hey! You found this booklet interesting? Support Converting Colors with the new Membership Option!

The pro membership hides all ads, plus gives you double the colors in the color bucket, and more awesome pro features!

**[Learn more, Memberships starting at \\$2.50/m!](#)**

**Follow me  
on Twitter!**

@ConvertingColor