

Converting Colors

Hex(C6B4BA)

Have a look what the booklet for
Hex(C6B4BA) contains.

Hex(C6B4BA)	3
<i>Conversions</i>	4
<i>Details</i>	6
<i>Harmonies</i>	11
<i>Previews</i>	23
<i>Color Blindness Simulation</i>	26
<i>CSS Examples</i>	29

Color

Hex(C6B4BA)

Conversions

Conversions Part 1

Format	Color
Hex	C6B4BA
RGB	198, 180, 186
RGB Percent	78%, 71%, 73%
CMY	0.2235, 0.2941, 0.2706
CMYK	0.00, 0.09, 0.06, 0.22
HSL	340°, 14%, 74%
HSV	340°, 9%, 78%
XYZ	48.4729, 48.1935, 53.2018
YIQ	186.0660, 8.8020, 5.6820

Conversions

Conversions Part 2

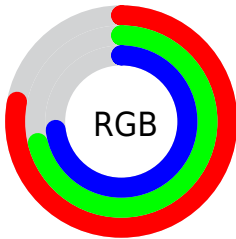
Format	Color
R _Y B	198, 180, 186
Decimal	13022394
CIE Lab	74.95, 7.46, -0.72
CIE LCh	75, 7.498, 354.481
Yxy	48.1935, 0.3234, 0.3216
Android (android.graphics.Color)	4291212474 (0xFFC6B4BA)
YUV	186.0660, -0.0325, 10.4661
Hunter-Lab	69.4215, 3.1482, 3.1576

Details

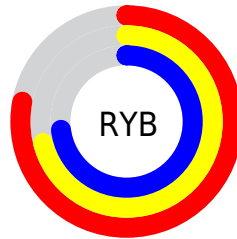
The Hex color **C6B4BA** is a light color, and the websafe version is hex **CCCCCC**. A complement of this color would be **B4C6C0**, and the grayscale version is **BABABA**.

A 20% lighter version of the original color is **FFECF2**, and **907F85** is the 20% darker color. If you saturate the color by 10%, you get **C6A0AD**, and if you desaturate by 10%, it is **C6C8C7**.

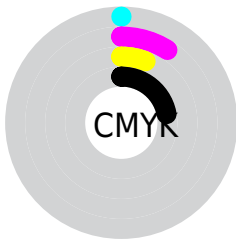
Distribution



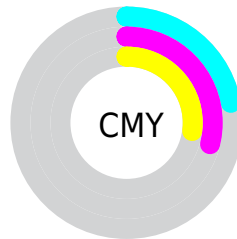
- Red (78%)
- Green (71%)
- Blue (73%)



- Red (78%)
- Yellow (71%)
- Blue (73%)



- Cyan (0%)
- Magenta (9%)
- Yellow (6%)
- Black (22%)



- Cyan (22%)
- Magenta (29%)
- Yellow (27%)

Brightness & Saturation Gradients

These gradients show how the Hex color C6B4BA changes by changing the brightness by 10 percent. The first figure shows a shift by +10% for each color and the second figure -10%.

Similar to the brightness gradients but the following saturation gradients show a change of the Hex color C6B4BA by changing the saturation by 10% instead.

 C6B4BA

FFFFFF

 FFECF2

 C6B4BA

 AB999F

 907F85

 76666C

 5E4E54

 46373C

 2F2227

 1B0C12

 000000

 C6B4BA

 C6B4BA

 C6A0AD

 C6C8C7

 C68CA0

 C6DCD4

 C67992

 C6EFE2

 C66585

 C6FFEF

 C65178

 C6FFFC

 C63D6B

 C6FFFF

 C6295E

 C61650

 C60243

Harmonies

Analogous

The Analogous color harmony consists of three colors that are next to each other on the color wheel.



C0B5C1



C6B4BA



C8B4B3

Triad

The Triadic color harmony groups three colors that are evenly spaced from another and form a triangle on the color wheel.



C6B4BA



B8BAAC



AABBC3

Complementary

The Complementary color scheme is a pair of colors which are on the opposite of each other on the color wheel.



C6B4BA



B4C6C0

Split Complementary

Split-complementary colors differ from the complementary color scheme. The scheme consists of three colors, the original color and two neighbors of the complement color.



A8DBDE



C6B4BA



B0BCB0

Square

The Square scheme is like the rectangle color scheme, but the four colors are evenly spaced on the color wheel.



C6B4BA



COB8AB



AABDB7



B0B9C6

Rectangle

The Rectangle color scheme consists of four colors that form a rectangle on the color wheel.



C6B4BA



C7B5AF



AABDB7



A9BCC2

Sweetspot

The Sweet Spot groups the original color and five complimentary colors.



C6B4BA



FFF7FA



C0B4C6



807A7C



000000



808080

Same Dimension

The Same Dimension uses a secret algorithm to generate beautiful new colors.



C6B4BA



FFE3EC



C6B7B4



635A5D



A30036



24000C

Inverse Universe

The Inverse Universe completely reimagines the original color for something new.



C6B4BA



FFE3EC



B4C3C6



635A5D



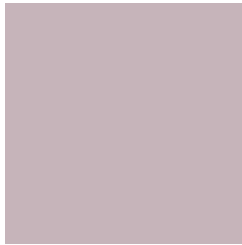
A30036



24000C

Previews

White Background



This preview shows how the Hex color C6B4BA looks on a white background.

Color Contrast Check

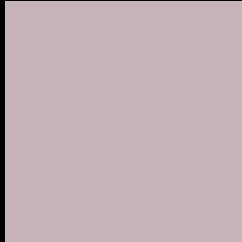
Large Text (above 18pt) WCAG AA × Fail

Any Text WCAG AA × Fail

Large Text (above 18pt) WCAG AAA × Fail

Any Text WCAG AAA × Fail

Black Background



This preview shows how the Hex color C6B4BA looks on a black background.

Color Contrast Check

Large Text (above 18pt) WCAG AA ✓ Pass

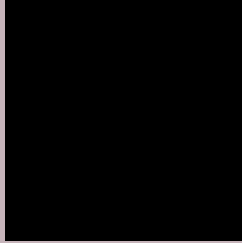
Any Text WCAG AA ✓ Pass

Large Text (above 18pt) WCAG AAA ✓ Pass

Any Text WCAG AAA ✓ Pass

If you want to check with other color combinations, try the [Color Contrast Checker](#).

Hex C6B4BA Background



This preview shows how black text looks on a background with the Hex color C6B4BA.



This preview shows how white text looks on a background with the Hex color C6B4BA.

Color Blindness Simulation

Color vision deficiency is a very complex topic, and I could not describe the different causes any better than Wikipedia does, so if you want to learn more, you should check out their [article about color blindness](#).

Dichromacy



Original Color
C6B4BA

Protanopia
BBB8BC

Deuteranopia
C9B3BA



Tritanopia
C7B3C1

Trichromacy



Original Color
C6B4BA

Protanomaly
BFB7BB

Deuteranomaly
C8B3BA

Tritanomaly
C7B3BE

Monochromacy



Original Color
C6B4BA

Achromatopsia
BABABA

Achromatomaly
BEB8BA

CSS Examples

Text

The CSS property to change the color of the text to Hex C6B4BA is called "color". The color property can be set on classes, ids or directly on the HTML element.

This example shows how text in the color #C6B4BA looks like.

```
.text, #text, p{  
    color:#C6B4BA  
}
```

If you want to add a text shadow in that color use the text-shadow property, you can generate a text shadow directly with our [CSS Text Shadow Generator](#).

Here you see how black text with a 4 pixel #C6B4BA colored shadow looks like.

```
.shadow{ text-shadow: 4px 4px 2px #C6B4BA
}
```

Border

The CSS property to change the border of an element to Hex C6B4BA is called "border". The border property can be set on classes, ids or directly on the HTML element.

This example shows the color as border, it can be applied via the CSS property "border" or "border-color".

```
.border, #border, table{ border:4px solid
#C6B4BA }
```

If only the border color should be changed use the property `border-color`.

```
.border{ border-color:#C6B4BA }
```

If you want to add a box shadow in that color use:

Here you see how a box with a 4 pixel #C6B4BA colored shadow looks like.

```
.boxshadow{ -moz-box-shadow:4px 4px 4px  
4px #C6B4BA; -webkit-box-shadow:4px 4px  
4px 4px #C6B4BA; box-shadow:4px 4px 4px  
4px #C6B4BA }
```

Background

The CSS property to change the background color of an element to Hex C6B4BA is called "background". The background property can be set on classes, ids or directly on the HTML element.

```
.background, #background, body{  
background:#C6B4BA }
```

If only the background color should be changed can be used:

```
.background{ background-color:#C6B4BA }
```

This example shows the color as background, it is applied via the CSS property "background".

To optimize and compress your CSS code, you can use our [online CSS compressor and optimizer](#) based on csstidy. If you want to create a linear or radial gradient as background or border, check our [CSS Gradient Generator](#).

Hey! You found this booklet interesting? Support Converting Colors with the new Membership Option!

The pro membership hides all ads, plus gives you double the colors in the color bucket, and more awesome pro features!

[Learn more, Memberships starting at \\$2.50/m!](#)

**Follow me
on Twitter!**

@ConvertingColor