

Converting Colors

Hex(C6B4BE)

Have a look what the booklet for
Hex(C6B4BE) contains.

Hex(C6B4BE)	3
<i>Conversions</i>	4
<i>Details</i>	6
<i>Harmonies</i>	11
<i>Previews</i>	23
<i>Color Blindness Simulation</i>	26
<i>CSS Examples</i>	29

Color

Hex(C6B4BE)

Conversions

Conversions Part 1

Format	Color
Hex	C6B4BE
RGB	198, 180, 190
RGB Percent	78%, 71%, 75%
CMY	0.2235, 0.2941, 0.2549
CMYK	0.00, 0.09, 0.04, 0.22
HSL	327°, 14%, 74%
HSV	327°, 9%, 78%
XYZ	48.9042, 48.3660, 55.4732
YIQ	186.5220, 7.5180, 6.9260

Conversions

Conversions Part 2

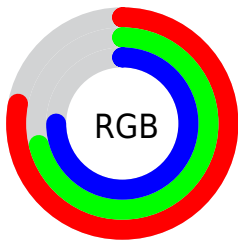
Format	Color
R _Y B	198, 180, 190
Decimal	13022398
CIE Lab	75.06, 8.18, -2.74
CIE LCh	75, 8.626, 341.445
Yxy	48.3660, 0.3202, 0.3166
Android (android.graphics.Color)	4291212478 (0xFFC6B4BE)
YUV	186.5220, 1.7147, 10.0662
Hunter-Lab	69.5457, 3.8156, 1.3892

Details

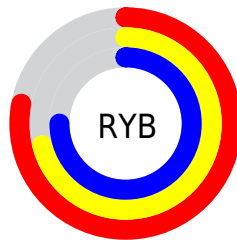
The Hex color **C6B4BE** is a light color, and the websafe version is hex **CCCCCC**. A complement of this color would be **B4C6BC**, and the grayscale version is **BBBBBB**.

A 20% lighter version of the original color is **FFECF6**, and **907F89** is the 20% darker color. If you saturate the color by 10%, you get **C6A0B5**, and if you desaturate by 10%, it is **C6C8C7**.

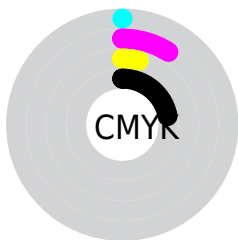
Distribution



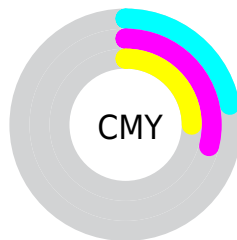
- Red (78%)
- Green (71%)
- Blue (75%)



- Red (78%)
- Yellow (71%)
- Blue (75%)



- Cyan (0%)
- Magenta (9%)
- Yellow (4%)
- Black (22%)



- Cyan (22%)
- Magenta (29%)
- Yellow (25%)

Brightness & Saturation Gradients

These gradients show how the Hex color C6B4BE changes by changing the brightness by 10 percent. The first figure shows a shift by +10% for each color and the second figure -10%.

Similar to the brightness gradients but the following saturation gradients show a change of the Hex color C6B4BE by changing the saturation by 10% instead.

 C6B4BE

FFFFFF

 FFECF6

 C6B4BE

 AB99A3

 907F89

 76666F

 5E4E57

 463740

 30222A

 1B0C15

 000000

 C6B4BE

 C6B4BE

 C6A0B5

 C6C8C7

 C68CAC

 C6DCD0

 C679A4

 C6EFD8

 C6659B

 C6FFE1

 C65192

 C6FFEA

 C63D89

 C6FFF3

 C62980

 C6FFFC

 C61678

 C6FFFF

 C6026F

Harmonies

Analogous

The Analogous color harmony consists of three colors that are next to each other on the color wheel.



BEB6C5



C6B4BE



CAB3B6

Triad

The Triadic color harmony groups three colors that are evenly spaced from another and form a triangle on the color wheel.



C6B4BE



BCB9A9



A6BDC3

Complementary

The Complementary color scheme is a pair of colors which are on the opposite of each other on the color wheel.



C6B4BE



B4C6BC

Split Complementary

Split-complementary colors differ from the complementary color scheme. The scheme consists of three colors, the original color and two neighbors of the complement color.



A6BEBC



C6B4BE



B3BCAD

Square

The Square scheme is like the rectangle color scheme, but the four colors are evenly spaced on the color wheel.



C6B4BE



C4B7AA



ABBDB3



ABBBC8

Rectangle

The Rectangle color scheme consists of four colors that form a rectangle on the color wheel.



C6B4BE



CAB4B1



ABBDB3



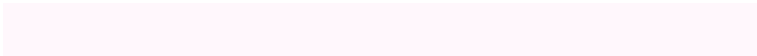
A5BDC1

Sweetspot

The Sweet Spot groups the original color and five complimentary colors.



C6B4BE



FFF7FC



BCB4C6



807A7D



000000



808080

Same Dimension

The Same Dimension uses a secret algorithm to generate beautiful new colors.



C6B4BE



FFE3F3



C6B4B5



635A5F



A3005B



240014

Inverse Universe

The Inverse Universe completely reimagines the original color for something new.



C6B4BE



FFE3F3



B4C6C5



635A5F



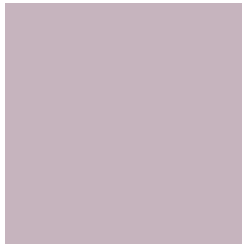
A3005B



240014

Previews

White Background



This preview shows how the Hex color C6B4BE looks on a white background.

Color Contrast Check

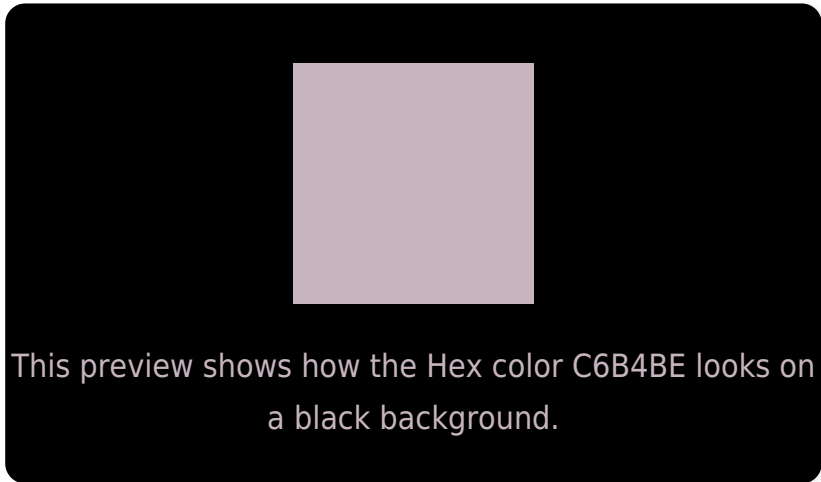
Large Text (above 18pt) WCAG AA × Fail

Any Text WCAG AA × Fail

Large Text (above 18pt) WCAG AAA × Fail

Any Text WCAG AAA × Fail

Black Background



Color Contrast Check

Large Text (above 18pt) WCAG AA ✓ Pass

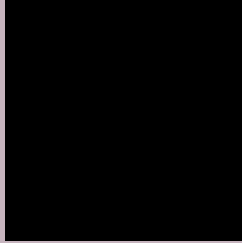
Any Text WCAG AA ✓ Pass

Large Text (above 18pt) WCAG AAA ✓ Pass

Any Text WCAG AAA ✓ Pass

If you want to check with other color combinations, try the [Color Contrast Checker](#).

Hex C6B4BE Background



This preview shows how black text looks on a background with the Hex color C6B4BE.



This preview shows how white text looks on a background with the Hex color C6B4BE.

Color Blindness Simulation

Color vision deficiency is a very complex topic, and I could not describe the different causes any better than Wikipedia does, so if you want to learn more, you should check out their [article about color blindness](#).

Dichromacy



Original Color
C6B4BE

Protanopia
BAB8C0

Deuteranopia
C8B3BE



Tritanopia
C7B3C2

Trichromacy



Original Color
C6B4BE

Protanomaly
BEB7BF

Deuteranomaly
C7B3BE

Tritanomaly
C7B3C1

Monochromacy



Original Color
C6B4BE

Achromatopsia
BBBBBB

Achromatomaly
BFB8BC

CSS Examples

Text

The CSS property to change the color of the text to Hex C6B4BE is called "color". The color property can be set on classes, ids or directly on the HTML element.

This example shows how text in the color #C6B4BE looks like.

```
.text, #text, p{  
    color:#C6B4BE  
}
```

If you want to add a text shadow in that color use the text-shadow property, you can generate a text shadow directly with our [CSS Text Shadow Generator](#).

Here you see how black text with a 4 pixel #C6B4BE colored shadow looks like.

```
.shadow{ text-shadow: 4px 4px 2px #C6B4BE
}
```

Border

The CSS property to change the border of an element to Hex C6B4BE is called "border". The border property can be set on classes, ids or directly on the HTML element.

This example shows the color as border, it can be applied via the CSS property "border" or "border-color".

```
.border, #border, table{ border:4px solid
#C6B4BE }
```

If only the border color should be changed use the property `border-color`.

```
.border{ border-color:#C6B4BE }
```

If you want to add a box shadow in that color use:

Here you see how a box with a 4 pixel #C6B4BE colored shadow looks like.

```
.boxshadow{ -moz-box-shadow:4px 4px 4px  
4px #C6B4BE; -webkit-box-shadow:4px 4px  
4px 4px #C6B4BE; box-shadow:4px 4px 4px  
4px #C6B4BE }
```

Background

The CSS property to change the background color of an element to Hex C6B4BE is called "background". The background property can be set on classes, ids or directly on the HTML element.

```
.background, #background, body{  
background:#C6B4BE }
```

If only the background color should be changed can be used:

```
.background{ background-color:#C6B4BE }
```

This example shows the color as background, it is applied via the CSS property "background".

To optimize and compress your CSS code, you can use our [online CSS compressor and optimizer](#) based on csstidy. If you want to create a linear or radial gradient as background or border, check our [CSS Gradient Generator](#).

Hey! You found this booklet interesting? Support Converting Colors with the new Membership Option!

The pro membership hides all ads, plus gives you double the colors in the color bucket, and more awesome pro features!

[Learn more, Memberships starting at \\$2.50/m!](#)

**Follow me
on Twitter!**

@ConvertingColor