

Converting Colors

Hex(C6B8B3)

Have a look what the booklet for
Hex(C6B8B3) contains.

Hex(C6B8B3)	3
<i>Conversions</i>	4
<i>Details</i>	6
<i>Harmonies</i>	11
<i>Previews</i>	23
<i>Color Blindness Simulation</i>	26
<i>CSS Examples</i>	29

Color

Hex(C6B8B3)

Conversions

Conversions Part 1

Format	Color
Hex	C6B8B3
RGB	198, 184, 179
RGB Percent	78%, 72%, 70%
CMY	0.2235, 0.2784, 0.2980
CMYK	0.00, 0.07, 0.10, 0.22
HSL	16°, 14%, 74%
HSV	16°, 10%, 78%
XYZ	48.5659, 49.5414, 49.6506
YIQ	187.6160, 9.9490, 1.4130

Conversions

Conversions Part 2

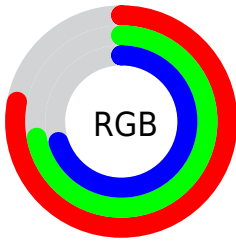
Format	Color
RYB	198, 186, 179
Decimal	13023411
CIELab	75.79, 4.10, 4.31
CIELCh	76, 5.949, 46.470
Yxy	49.5414, 0.3287, 0.3353
Android (android.graphics.Color)	4291213491 (0xFFC6B8B3)
YUV	187.6160, -4.2477, 9.1068
Hunter-Lab	70.3857, -0.0105, 7.4464

Details

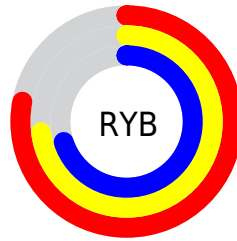
The Hex color **C6B8B3** is a light color, and the websafe version is hex **CCCCCC**. A complement of this color would be **B3C1C6**, and the grayscale version is **BCBCBC**.

A 20% lighter version of the original color is **FFF0EB**, and **90837E** is the 20% darker color. If you saturate the color by 10%, you get **C6A99F**, and if you desaturate by 10%, it is **C6C7C7**.

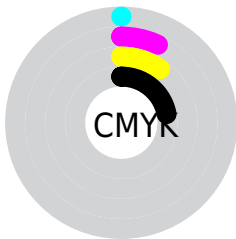
Distribution



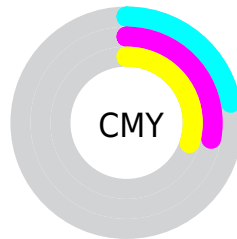
- Red (78%)
- Green (72%)
- Blue (70%)



- Red (78%)
- Yellow (73%)
- Blue (70%)



- Cyan (0%)
- Magenta (7%)
- Yellow (10%)
- Black (22%)



- Cyan (22%)
- Magenta (28%)
- Yellow (30%)

Brightness & Saturation Gradients

These gradients show how the Hex color C6B8B3 changes by changing the brightness by 10 percent. The first figure shows a shift by +10% for each color and the second figure -10%.

Similar to the brightness gradients but the following saturation gradients show a change of the Hex color C6B8B3 by changing the saturation by 10% instead.

 C6B8B3

FFFFFF

 FFF0EB

 C6B8B3

 AB9D98

 90837E

 766A65

 5E524D

 463B37

 2F2521

 1B100B

 000000

 C6B8B3

 C6B8B3

 C6A99F

 C6C7C7

 C69B8B

 C6D5DB

 C68C78

 C6E4EE

 C67E64

 C6F2FF

 C66F50

 C6FFFF

 C6603C

 C65228

 C64315

 C63501

Harmonies

Analogous

The Analogous color harmony consists of three colors that are next to each other on the color wheel.



C7B7B8



C6B8B3



C2BAB0

Triad

The Triadic color harmony groups three colors that are evenly spaced from another and form a triangle on the color wheel.



C6B8B3



B0BEB8



B9BAC5

Complementary

The Complementary color scheme is a pair of colors which are on the opposite of each other on the color wheel.



C6B8B3



B3C1C6

Split Complementary

Split-complementary colors differ from the complementary color scheme. The scheme consists of three colors, the original color and two neighbors of the complement color.



B3BCC5



C6B8B3



AE BE BE

Square

The Square scheme is like the rectangle color scheme, but the four colors are evenly spaced on the color wheel.



C6B8B3



B6DBB3



AEBDC2



C0B8C2

Rectangle

The Rectangle color scheme consists of four colors that form a rectangle on the color wheel.



C6B8B3



BEBBB0



AEBDC2



B7BBC6

Sweetspot

The Sweet Spot groups the original color and five complimentary colors.



C6B8B3



FFF9F7



C6B3C1



807C7A



000000



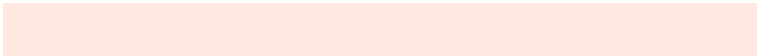
808080

Same Dimension

The Same Dimension uses a secret algorithm to generate beautiful new colors.



C6B8B3



FFE8E0



C6C1B3



635C5A



A32B00



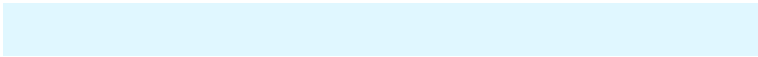
240900

Inverse Universe

The Inverse Universe completely reimagines the original color for something new.



B3C1C6



E0F7FF



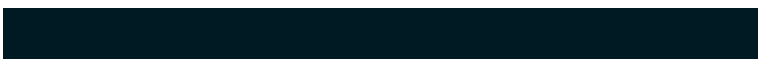
B3B8C6



5A6163



0078A3



001A24

Previews

White Background



This preview shows how the Hex color C6B8B3 looks on a white background.

Color Contrast Check

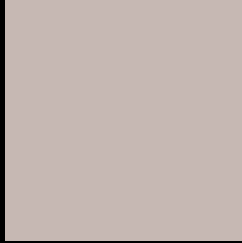
Large Text (above 18pt) WCAG AA × Fail

Any Text WCAG AA × Fail

Large Text (above 18pt) WCAG AAA × Fail

Any Text WCAG AAA × Fail

Black Background



This preview shows how the Hex color C6B8B3 looks on a black background.

Color Contrast Check

Large Text (above 18pt) WCAG AA ✓ Pass

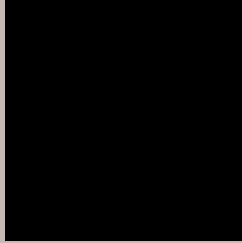
Any Text WCAG AA ✓ Pass

Large Text (above 18pt) WCAG AAA ✓ Pass

Any Text WCAG AAA ✓ Pass

If you want to check with other color combinations, try the [Color Contrast Checker](#).

Hex C6B8B3 Background



This preview shows how black text looks on a background with the Hex color C6B8B3.



This preview shows how white text looks on a background with the Hex color C6B8B3.

Color Blindness Simulation

Color vision deficiency is a very complex topic, and I could not describe the different causes any better than Wikipedia does, so if you want to learn more, you should check out their [article about color blindness](#).

Dichromacy



Original Color
C6B8B3

Protanopia
C0BAB4

Deuteranopia
CFB5B4



Tritanopia
C8B5C4

Trichromacy



Original Color
C6B8B3

Protanomaly
C2B9B4

Deuteranomaly
CCB6B4

Tritanomaly
C7B6BE

Monochromacy



Original Color
C6B8B3

Achromatopsia
BCBCBC

Achromatomaly
C0BBB9

CSS Examples

Text

The CSS property to change the color of the text to Hex C6B8B3 is called "color". The color property can be set on classes, ids or directly on the HTML element.

This example shows how text in the color #C6B8B3 looks like.

```
.text, #text, p{  
    color:#C6B8B3  
}
```

If you want to add a text shadow in that color use the text-shadow property, you can generate a text shadow directly with our [CSS Text Shadow Generator](#).

Here you see how black text with a 4 pixel #C6B8B3 colored shadow looks like.

```
.shadow{ text-shadow: 4px 4px 2px #C6B8B3
}
```

Border

The CSS property to change the border of an element to Hex C6B8B3 is called "border". The border property can be set on classes, ids or directly on the HTML element.

This example shows the color as border, it can be applied via the CSS property "border" or "border-color".

```
.border, #border, table{ border:4px solid
#C6B8B3 }
```

If only the border color should be changed use the property `border-color`.

```
.border{ border-color:#C6B8B3 }
```

If you want to add a box shadow in that color use:

Here you see how a box with a 4 pixel #C6B8B3 colored shadow looks like.

```
.boxshadow{ -moz-box-shadow:4px 4px 4px  
4px #C6B8B3; -webkit-box-shadow:4px 4px  
4px 4px #C6B8B3; box-shadow:4px 4px 4px  
4px #C6B8B3 }
```

Background

The CSS property to change the background color of an element to Hex C6B8B3 is called "background". The background property can be set on classes, ids or directly on the HTML element.

```
.background, #background, body{  
background:#C6B8B3 }
```

If only the background color should be changed can be used:

```
.background{ background-color:#C6B8B3 }
```

This example shows the color as background, it is applied via the CSS property "background".

To optimize and compress your CSS code, you can use our [online CSS compressor and optimizer](#) based on csstidy. If you want to create a linear or radial gradient as background or border, check our [CSS Gradient Generator](#).

Hey! You found this booklet interesting? Support Converting Colors with the new Membership Option!

The pro membership hides all ads, plus gives you double the colors in the color bucket, and more awesome pro features!

[Learn more, Memberships starting at \\$2.50/m!](#)

**Follow me
on Twitter!**

@ConvertingColor