

Converting Colors

Hex(C6B8B5)

Have a look what the booklet for
Hex(C6B8B5) contains.

Hex(C6B8B5)	3
<i>Conversions</i>	4
<i>Details</i>	6
<i>Harmonies</i>	11
<i>Previews</i>	23
<i>Color Blindness Simulation</i>	26
<i>CSS Examples</i>	29

Color

Hex(C6B8B5)

Conversions

Conversions Part 1

Format	Color
Hex	C6B8B5
RGB	198, 184, 181
RGB Percent	78%, 72%, 71%
CMY	0.2235, 0.2784, 0.2902
CMYK	0.00, 0.07, 0.09, 0.22
HSL	11°, 13%, 74%
HSV	11°, 9%, 78%
XYZ	48.7697, 49.6229, 50.7238
YIQ	187.8440, 9.3070, 2.0350

Conversions

Conversions Part 2

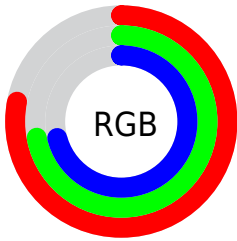
Format	Color
RYB	198, 185, 181
Decimal	13023413
CIELab	75.84, 4.44, 3.30
CIELCh	76, 5.531, 36.618
Yxy	49.6229, 0.3271, 0.3328
Android (android.graphics.Color)	4291213493 (0xFFC6B8B5)
YUV	187.8440, -3.3741, 8.9068
Hunter-Lab	70.4436, 0.3034, 6.6179

Details

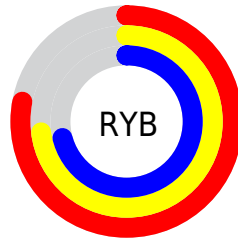
The Hex color **C6B8B5** is a light color, and the websafe version is hex **CCCCCC**. A complement of this color would be **B5C3C6**, and the grayscale version is **BCBCBC**.

A 20% lighter version of the original color is **FFF0ED**, and **908380** is the 20% darker color. If you saturate the color by 10%, you get **C6A8A1**, and if you desaturate by 10%, it is **C6C8C9**.

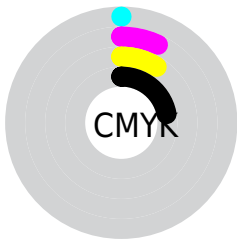
Distribution



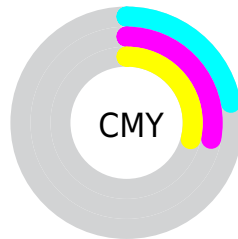
- Red (78%)
- Green (72%)
- Blue (71%)



- Red (78%)
- Yellow (73%)
- Blue (71%)



- Cyan (0%)
- Magenta (7%)
- Yellow (9%)
- Black (22%)



- Cyan (22%)
- Magenta (28%)
- Yellow (29%)

Brightness & Saturation Gradients

These gradients show how the Hex color C6B8B5 changes by changing the brightness by 10 percent. The first figure shows a shift by +10% for each color and the second figure -10%.

Similar to the brightness gradients but the following saturation gradients show a change of the Hex color C6B8B5 by changing the saturation by 10% instead.

 C6B8B5

 C6B8B5

FFFFFF

 AB9D9A

 FFF0ED

 908380

 766A67

 5E524F

 463B38

 2F2523

 1B100D

 000000

 C6B8B5

 C6B8B5

 C6A8A1

 C6C8C9

 C6978D

 C6D9DD

 C6877A

 C6E9F0

 C67766

 C6F9FF

 C66652

 C6FFFF

 C6563E

 C6462A

 C63617

 C62503

Harmonies

Analogous

The Analogous color harmony consists of three colors that are next to each other on the color wheel.



C6B8BA



C6B8B5



C3B9B2

Triad

The Triadic color harmony groups three colors that are evenly spaced from another and form a triangle on the color wheel.



C6B8B5



B3BEB7



B7BBC5

Complementary

The Complementary color scheme is a pair of colors which are on the opposite of each other on the color wheel.



C6B8B5



B5C3C6

Split Complementary

Split-complementary colors differ from the complementary color scheme. The scheme consists of three colors, the original color and two neighbors of the complement color.



B2BDC4



C6B8B5



AFBEB3

Square

The Square scheme is like the rectangle color scheme, but the four colors are evenly spaced on the color wheel.



C6B8B5



B8BCB3



AFBEC1



BDB9C3

Rectangle

The Rectangle color scheme consists of four colors that form a rectangle on the color wheel.



C6B8B5



C0BAB1



AFBEC1



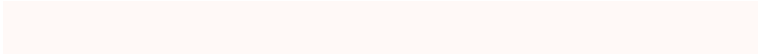
B5BBC5

Sweetspot

The Sweet Spot groups the original color and five complimentary colors.



C6B8B5



FFF9F7



C6B5C3



807B7A



000000



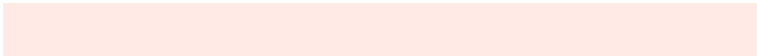
808080

Same Dimension

The Same Dimension uses a secret algorithm to generate beautiful new colors.



C6B8B5



FFEAE6



C6C0B5



635B5A



A31D00



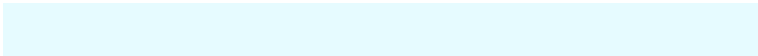
240600

Inverse Universe

The Inverse Universe completely reimagines the original color for something new.



B5C3C6



E6FBFF



B5BBC6



5A6263



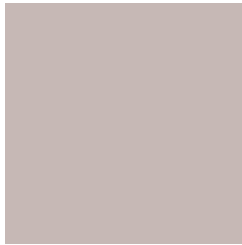
0086A3



001D24

Previews

White Background



This preview shows how the Hex color C6B8B5 looks on a white background.

Color Contrast Check

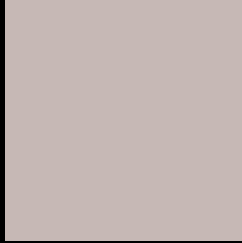
Large Text (above 18pt) WCAG AA × Fail

Any Text WCAG AA × Fail

Large Text (above 18pt) WCAG AAA × Fail

Any Text WCAG AAA × Fail

Black Background



This preview shows how the Hex color C6B8B5 looks on a black background.

Color Contrast Check

Large Text (above 18pt) WCAG AA ✓ Pass

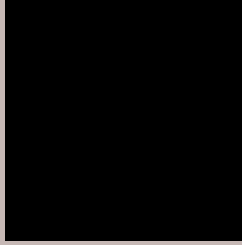
Any Text WCAG AA ✓ Pass

Large Text (above 18pt) WCAG AAA ✓ Pass

Any Text WCAG AAA ✓ Pass

If you want to check with other color combinations, try the [Color Contrast Checker](#).

Hex C6B8B5 Background



This preview shows how black text looks on a background with the Hex color C6B8B5.



This preview shows how white text looks on a background with the Hex color C6B8B5.

Color Blindness Simulation

Color vision deficiency is a very complex topic, and I could not describe the different causes any better than Wikipedia does, so if you want to learn more, you should check out their [article about color blindness](#).

Dichromacy





Tritanopia
C8B6C4

Trichromacy



Original Color
C6B8B5

Protanomaly
C2B9B6

Deuteranomaly
CCB6B6

Tritanomaly
C7B7BF

Monochromacy



Original Color
C6B8B5

Achromatopsia
BCBCBC

Achromatomaly
C0BBB9

CSS Examples

Text

The CSS property to change the color of the text to Hex C6B8B5 is called "color". The color property can be set on classes, ids or directly on the HTML element.

This example shows how text in the color #C6B8B5 looks like.

```
.text, #text, p{  
    color:#C6B8B5  
}
```

If you want to add a text shadow in that color use the text-shadow property, you can generate a text shadow directly with our [CSS Text Shadow Generator](#).

Here you see how black text with a 4 pixel #C6B8B5 colored shadow looks like.

```
.shadow{ text-shadow: 4px 4px 2px #C6B8B5  
}
```

Border

The CSS property to change the border of an element to Hex C6B8B5 is called "border". The border property can be set on classes, ids or directly on the HTML element.

This example shows the color as border, it can be applied via the CSS property "border" or "border-color".

```
.border, #border, table{ border:4px solid  
#C6B8B5 }
```

If only the border color should be changed use the property `border-color`.

```
.border{ border-color:#C6B8B5 }
```

If you want to add a box shadow in that color use:

Here you see how a box with a 4 pixel #C6B8B5 colored shadow looks like.

```
.boxshadow{ -moz-box-shadow:4px 4px 4px  
4px #C6B8B5; -webkit-box-shadow:4px 4px  
4px 4px #C6B8B5; box-shadow:4px 4px 4px  
4px #C6B8B5 }
```

Background

The CSS property to change the background color of an element to Hex C6B8B5 is called "background". The background property can be set on classes, ids or directly on the HTML element.

```
.background, #background, body{  
background:#C6B8B5 }
```

If only the background color should be changed can be used:

```
.background{ background-color:#C6B8B5 }
```

This example shows the color as background, it is applied via the CSS property "background".

To optimize and compress your CSS code, you can use our [online CSS compressor and optimizer](#) based on csstidy. If you want to create a linear or radial gradient as background or border, check our [CSS Gradient Generator](#).

Hey! You found this booklet interesting? Support Converting Colors with the new Membership Option!

The pro membership hides all ads, plus gives you double the colors in the color bucket, and more awesome pro features!

[Learn more, Memberships starting at \\$2.50/m!](#)

**Follow me
on Twitter!**

@ConvertingColor