

Converting Colors

Hex(C6B8BC)

Have a look what the booklet for
Hex(C6B8BC) contains.

Hex(C6B8BC)	3
<i>Conversions</i>	4
<i>Details</i>	6
<i>Harmonies</i>	11
<i>Previews</i>	23
<i>Color Blindness Simulation</i>	26
<i>CSS Examples</i>	29

Color

Hex(C6B8BC)

Conversions

Conversions Part 1

Format	Color
Hex	C6B8BC
RGB	198, 184, 188
RGB Percent	78%, 72%, 74%
CMY	0.2235, 0.2784, 0.2627
CMYK	0.00, 0.07, 0.05, 0.22
HSL	343°, 11%, 75%
HSV	343°, 7%, 78%
XYZ	49.5063, 49.9176, 54.6027
YIQ	188.6420, 7.0600, 4.2120

Conversions

Conversions Part 2

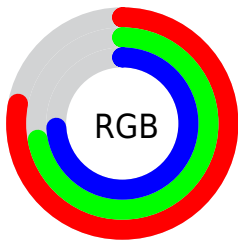
Format	Color
R _Y B	198, 184, 188
Decimal	13023420
CIE Lab	76.02, 5.66, -0.24
CIE LCh	76, 5.668, 357.534
Yxy	49.9176, 0.3214, 0.3241
Android (android.graphics.Color)	4291213500 (0xFFC6B8BC)
YUV	188.6420, -0.3165, 8.2070
Hunter-Lab	70.6524, 1.4337, 3.6352

Details

The Hex color **C6B8BC** is a light color, and the websafe version is hex **CCCCCC**. A complement of this color would be **B8C6C2**, and the grayscale version is **BDBDBD**.

A 20% lighter version of the original color is **FFF0F4**, and **908387** is the 20% darker color. If you saturate the color by 10%, you get **C6A4AE**, and if you desaturate by 10%, it is **C6CCCA**.

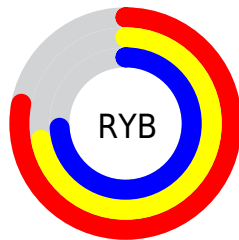
Distribution



Red (78%)

Green (72%)

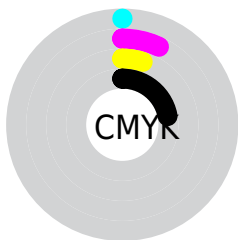
Blue (74%)



Red (78%)

Yellow (72%)

Blue (74%)

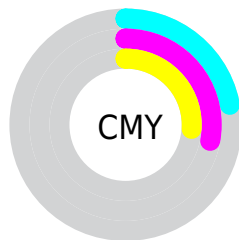


Cyan (0%)

Magenta (7%)

Yellow (5%)

Black (22%)



Cyan (22%)

Magenta (28%)

Yellow (26%)

Brightness & Saturation Gradients

These gradients show how the Hex color C6B8BC changes by changing the brightness by 10 percent. The first figure shows a shift by +10% for each color and the second figure -10%.

Similar to the brightness gradients but the following saturation gradients show a change of the Hex color C6B8BC by changing the saturation by 10% instead.

 C6B8BC

FFFFFF

 FFF0F4

 C6B8BC

 AB9DA1

 908387

 766A6E

 5E5255

 463B3E

 302528

 1B1014

 000000

 C6B8BC

 C6B8BC

 C6A4AE

 C6CCCA

 C690A0

 C6E0D8

 C67D92

 C6F3E6

 C66983

 C6FFF5

 C65575

 C6FFFF

 C64167

 C62D59

 C61A4B

 C6063D

Harmonies

Analogous

The Analogous color harmony consists of three colors that are next to each other on the color wheel.



C2B9C1



C6B8BC



C7B8B7

Triad

The Triadic color harmony groups three colors that are evenly spaced from another and form a triangle on the color wheel.



C6B8BC



BABDB2



B1BDC4

Complementary

The Complementary color scheme is a pair of colors which are on the opposite of each other on the color wheel.



C6B8BC



B8C6C2

Split Complementary

Split-complementary colors differ from the complementary color scheme. The scheme consists of three colors, the original color and two neighbors of the complement color.



AFBEC0



C6B8BC



B5BEB6

Square

The Square scheme is like the rectangle color scheme, but the four colors are evenly spaced on the color wheel.



C6B8BC



C0BBB1



B0BFBB



B6BCC6

Rectangle

The Rectangle color scheme consists of four colors that form a rectangle on the color wheel.



C6B8BC



C6B9B4



B0BFBB



B0BEC3

Sweetspot

The Sweet Spot groups the original color and five complimentary colors.



C6B8BC



FFFAFB



C2B8C6



807D7E



000000



808080

Same Dimension

The Same Dimension uses a secret algorithm to generate beautiful new colors.



C6B8BC



FFEBF0



C6BBB8



635A5C



A3002F



24000A

Inverse Universe

The Inverse Universe completely reimagines the original color for something new.



C6B8BC



FFEBF0



B8C3C6



635A5C



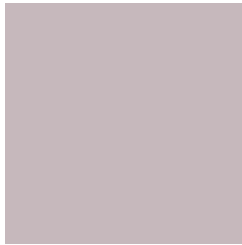
A3002F



24000A

Previews

White Background



This preview shows how the Hex color C6B8BC looks on a white background.

Color Contrast Check

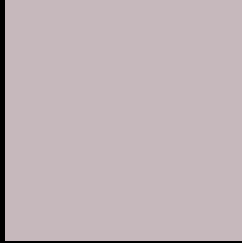
Large Text (above 18pt) WCAG AA × Fail

Any Text WCAG AA × Fail

Large Text (above 18pt) WCAG AAA × Fail

Any Text WCAG AAA × Fail

Black Background



This preview shows how the Hex color C6B8BC looks on a black background.

Color Contrast Check

Large Text (above 18pt) WCAG AA ✓ Pass

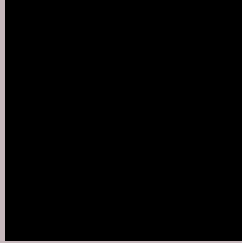
Any Text WCAG AA ✓ Pass

Large Text (above 18pt) WCAG AAA ✓ Pass

Any Text WCAG AAA ✓ Pass

If you want to check with other color combinations, try the [Color Contrast Checker](#).

Hex C6B8BC Background



This preview shows how black text looks on a background with the Hex color C6B8BC.



This preview shows how white text looks on a background with the Hex color C6B8BC.

Color Blindness Simulation

Color vision deficiency is a very complex topic, and I could not describe the different causes any better than Wikipedia does, so if you want to learn more, you should check out their [article about color blindness](#).

Dichromacy



Original Color
C6B8BC

Protanopia
BEBABD

Deuteranopia
CDB6BC



Tritanopia
C7B7C5

Trichromacy



Original Color
C6B8BC

Protanomaly
C1B9BD

Deuteranomaly
CAB7BC

Tritanomaly
C7B7C2

Monochromacy



Original Color
C6B8BC

Achromatopsia
BDBDBD

Achromatomaly
C0BBBD

CSS Examples

Text

The CSS property to change the color of the text to Hex C6B8BC is called "color". The color property can be set on classes, ids or directly on the HTML element.

This example shows how text in the color #C6B8BC looks like.

```
.text, #text, p{  
    color:#C6B8BC  
}
```

If you want to add a text shadow in that color use the text-shadow property, you can generate a text shadow directly with our [CSS Text Shadow Generator](#).

Here you see how black text with a 4 pixel #C6B8BC colored shadow looks like.

```
.shadow{ text-shadow: 4px 4px 2px #C6B8BC
}
```

Border

The CSS property to change the border of an element to Hex C6B8BC is called "border". The border property can be set on classes, ids or directly on the HTML element.

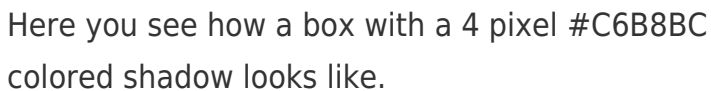
This example shows the color as border, it can be applied via the CSS property "border" or "border-color".

```
.border, #border, table{ border:4px solid
#C6B8BC }
```

If only the border color should be changed use the property `border-color`.

```
.border{ border-color:#C6B8BC }
```

If you want to add a box shadow in that color use:



Here you see how a box with a 4 pixel #C6B8BC colored shadow looks like.

```
.boxshadow{ -moz-box-shadow:4px 4px 4px  
4px #C6B8BC; -webkit-box-shadow:4px 4px  
4px 4px #C6B8BC; box-shadow:4px 4px 4px  
4px #C6B8BC }
```

Background

The CSS property to change the background color of an element to Hex C6B8BC is called "background". The background property can be set on classes, ids or directly on the HTML element.

```
.background, #background, body{  
background:#C6B8BC }
```

If only the background color should be changed can be used:

```
.background{ background-color:#C6B8BC }
```

This example shows the color as background, it is applied via the CSS property "background".

To optimize and compress your CSS code, you can use our [online CSS compressor and optimizer](#) based on csstidy. If you want to create a linear or radial gradient as background or border, check our [CSS Gradient Generator](#).

Hey! You found this booklet interesting? Support Converting Colors with the new Membership Option!

The pro membership hides all ads, plus gives you double the colors in the color bucket, and more awesome pro features!

[Learn more, Memberships starting at \\$2.50/m!](#)

**Follow me
on Twitter!**

@ConvertingColor