

Converting Colors

Hex(C6B9BA)

Have a look what the booklet for
Hex(C6B9BA) contains.

Hex(C6B9BA)	3
<i>Conversions</i>	4
<i>Details</i>	6
<i>Harmonies</i>	11
<i>Previews</i>	23
<i>Color Blindness Simulation</i>	26
<i>CSS Examples</i>	29

Color

Hex(C6B9BA)

Conversions

Conversions Part 1

Format	Color
Hex	C6B9BA
RGB	198, 185, 186
RGB Percent	78%, 73%, 73%
CMY	0.2235, 0.2745, 0.2706
CMYK	0.00, 0.07, 0.06, 0.22
HSL	355°, 10%, 75%
HSV	355°, 7%, 78%
XYZ	49.5006, 50.2489, 53.5444
YIQ	189.0010, 7.4270, 3.0670

Conversions

Conversions Part 2

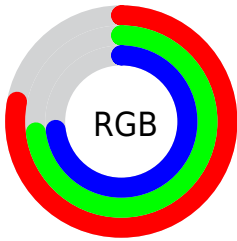
Format	Color
RYB	198, 185, 186
Decimal	13023674
CIELab	76.22, 4.77, 1.14
CIElCh	76, 4.906, 13.434
Yxy	50.2489, 0.3229, 0.3278
Android (android.graphics.Color)	4291213754 (0xFFC6B9BA)
YUV	189.0010, -1.4795, 7.8921
Hunter-Lab	70.8864, 0.5968, 4.8355

Details

The Hex color **C6B9BA** is a light color, and the websafe version is hex **CCCCCC**. A complement of this color would be **B9C6C5**, and the grayscale version is **BDBDBD**.

A 20% lighter version of the original color is **FFF1F2**, and **908485** is the 20% darker color. If you saturate the color by 10%, you get **C6A5A8**, and if you desaturate by 10%, it is **C6CDCC**.

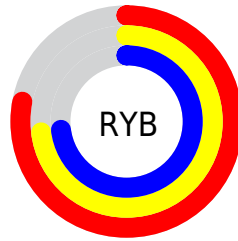
Distribution



Red (78%)

Green (73%)

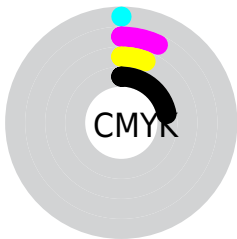
Blue (73%)



Red (78%)

Yellow (73%)

Blue (73%)

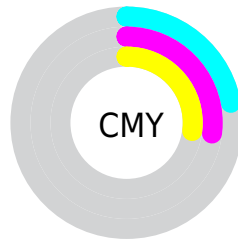


Cyan (0%)

Magenta (7%)

Yellow (6%)

Black (22%)



Cyan (22%)

Magenta (27%)

Yellow (27%)

Brightness & Saturation Gradients

These gradients show how the Hex color C6B9BA changes by changing the brightness by 10 percent. The first figure shows a shift by +10% for each color and the second figure -10%.

Similar to the brightness gradients but the following saturation gradients show a change of the Hex color C6B9BA by changing the saturation by 10% instead.

 C6B9BA

FFFFFF

 FFF1F2

 C6B9BA

 AB9E9F

 908485

 766B6C

 5E5354

 463C3C

 302627

 1B1112

 000000

 C6B9BA

 C6B9BA

 C6A5A8

 C6CDCC

 C69195

 C6E1DF

 C67E83

 C6F4F1

 C66A71

 C6FFFF

 C6565F

 C6424C

 C62E3A

 C61B28

 C60716

Harmonies

Analogous

The Analogous color harmony consists of three colors that are next to each other on the color wheel.



C4B9BF



C6B9BA



C5BAB6

Triad

The Triadic color harmony groups three colors that are evenly spaced from another and form a triangle on the color wheel.



C6B9BA



B8EBE5



B5BDC4

Complementary

The Complementary color scheme is a pair of colors which are on the opposite of each other on the color wheel.



C6B9BA



B9C6C5

Split Complementary

Split-complementary colors differ from the complementary color scheme. The scheme consists of three colors, the original color and two neighbors of the complement color.



B2BEC2



C6B9BA



B4BFB9

Square

The Square scheme is like the rectangle color scheme, but the four colors are evenly spaced on the color wheel.



C6B9BA



BEBCB3



B1BFBE



BABCC5

Rectangle

The Rectangle color scheme consists of four colors that form a rectangle on the color wheel.



C6B9BA



C4BAB4



B1BFBE



B4BEC4

Sweetspot

The Sweet Spot groups the original color and five complimentary colors.



C6B9BA



FFFAFA



C5B9C6



807D7D



000000



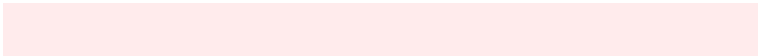
808080

Same Dimension

The Same Dimension uses a secret algorithm to generate beautiful new colors.



C6B9BA



FFEDEC



C6BEB9



635A5A



A3000D



240003

Inverse Universe

The Inverse Universe completely reimagines the original color for something new.



C6B9BA



FFEDEC



B9C1C6



635A5A



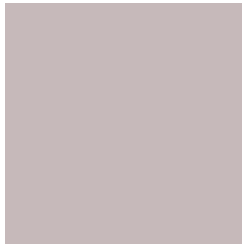
A3000D



240003

Previews

White Background



This preview shows how the Hex color C6B9BA looks on a white background.

Color Contrast Check

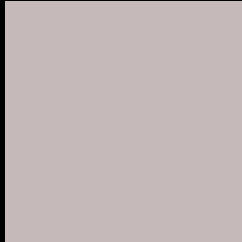
Large Text (above 18pt) WCAG AA × Fail

Any Text WCAG AA × Fail

Large Text (above 18pt) WCAG AAA × Fail

Any Text WCAG AAA × Fail

Black Background



This preview shows how the Hex color C6B9BA looks on a black background.

Color Contrast Check

Large Text (above 18pt) WCAG AA ✓ Pass

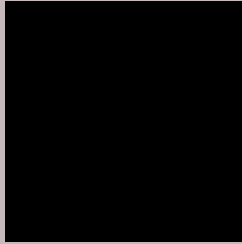
Any Text WCAG AA ✓ Pass

Large Text (above 18pt) WCAG AAA ✓ Pass

Any Text WCAG AAA ✓ Pass

If you want to check with other color combinations, try the [Color Contrast Checker](#).

Hex C6B9BA Background



This preview shows how black text looks on a background with the Hex color C6B9BA.



This preview shows how white text looks on a background with the Hex color C6B9BA.

Color Blindness Simulation

Color vision deficiency is a very complex topic, and I could not describe the different causes any better than Wikipedia does, so if you want to learn more, you should check out their [article about color blindness](#).

Dichromacy





Tritanopia
C8B7C6

Trichromacy



Original Color
C6B9BA

Protanomaly
C2BABB

Deuteranomaly
CCB7BB

Tritanomaly
C7B8C2

Monochromacy



Original Color
C6B9BA

Achromatopsia
BDBDBD

Achromatomaly
C0BCBC

CSS Examples

Text

The CSS property to change the color of the text to Hex C6B9BA is called "color". The color property can be set on classes, ids or directly on the HTML element.

This example shows how text in the color #C6B9BA looks like.

```
.text, #text, p{  
    color:#C6B9BA  
}
```

If you want to add a text shadow in that color use the text-shadow property, you can generate a text shadow directly with our [CSS Text Shadow Generator](#).

Here you see how black text with a 4 pixel #C6B9BA colored shadow looks like.

```
.shadow{ text-shadow: 4px 4px 2px #C6B9BA
}
```

Border

The CSS property to change the border of an element to Hex C6B9BA is called "border". The border property can be set on classes, ids or directly on the HTML element.

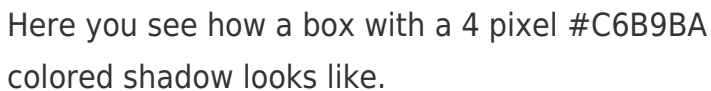
This example shows the color as border, it can be applied via the CSS property "border" or "border-color".

```
.border, #border, table{ border:4px solid
#C6B9BA }
```

If only the border color should be changed use the property `border-color`.

```
.border{ border-color:#C6B9BA }
```

If you want to add a box shadow in that color use:



Here you see how a box with a 4 pixel #C6B9BA colored shadow looks like.

```
.boxshadow{ -moz-box-shadow:4px 4px 4px  
4px #C6B9BA; -webkit-box-shadow:4px 4px  
4px 4px #C6B9BA; box-shadow:4px 4px 4px  
4px #C6B9BA }
```

Background

The CSS property to change the background color of an element to Hex C6B9BA is called "background". The background property can be set on classes, ids or directly on the HTML element.

```
.background, #background, body{  
background:#C6B9BA }
```

If only the background color should be changed can be used:

```
.background{ background-color:#C6B9BA }
```

This example shows the color as background, it is applied via the CSS property "background".

To optimize and compress your CSS code, you can use our [online CSS compressor and optimizer](#) based on csstidy. If you want to create a linear or radial gradient as background or border, check our [CSS Gradient Generator](#).

Hey! You found this booklet interesting? Support Converting Colors with the new Membership Option!

The pro membership hides all ads, plus gives you double the colors in the color bucket, and more awesome pro features!

[Learn more, Memberships starting at \\$2.50/m!](#)

**Follow me
on Twitter!**

@ConvertingColor