

Converting Colors

Hex(C73974)

Have a look what the booklet for
Hex(C73974) contains.

| | |
|--|----|
| Hex(C73974) | 3 |
| <i>Conversions</i> | 4 |
| <i>Details</i> | 6 |
| <i>Harmonies</i> | 11 |
| <i>Previews</i> | 23 |
| <i>Color Blindness Simulation</i> | 26 |
| <i>CSS Examples</i> | 29 |

Color

Hex(C73974)

Conversions

Conversions Part 1

| Format | Color |
|---------------|----------------------------|
| Hex | C73974 |
| RGB | 199, 57, 116 |
| RGB Percent | 78%, 22%, 45% |
| CMY | 0.2196, 0.7765, 0.5451 |
| CMYK | 0.00, 0.71, 0.42, 0.22 |
| HSL | 335°, 56%, 50% |
| HSV | 335°, 71%, 78% |
| XYZ | 28.1687, 16.3293, 18.1902 |
| YIQ | 106.1840, 65.6930, 48.4530 |

Conversions

Conversions Part 2

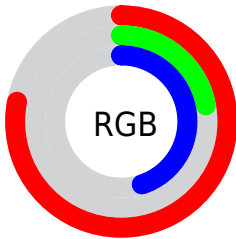
| Format | Color |
|-------------------------------------|------------------------------|
| R_{YB} | 199, 57, 116 |
| Decimal | 13056372 |
| CIE _{Lab} | 47.40, 60.07, -0.83 |
| CIE _{LCh} | 47, 60.074, 359.204 |
| Yxy | 16.3293, 0.4493, 0.2605 |
| Android (android.graphics.Color) | 4291246452 (0xFFC73974) |
| YUV | 106.1840, 4.8393, 81.3996 |
| Hunter-Lab | 40.4096, 53.7121, 1.5975 |

Details

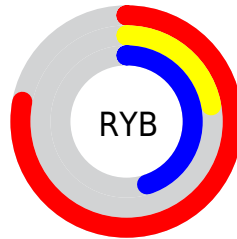
The Hex color **C73974** is a dark color, and the websafe version is hex **CC3366**. The color can be described as dark muted rose. A complement of this color would be **39C78C**, and the grayscale version is **6A6A6A**.

A 20% lighter version of the original color is **FF73A8**, and **8C0044** is the 20% darker color. If you saturate the color by 10%, you get **C72568**, and if you desaturate by 10%, it is **C74D80**.

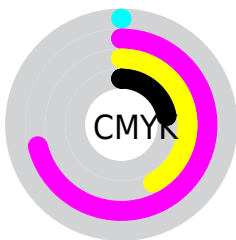
Distribution



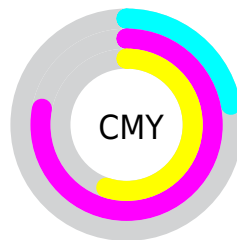
- Red (78%)
- Green (22%)
- Blue (45%)



- Red (78%)
- Yellow (22%)
- Blue (45%)



- Cyan (0%)
- Magenta (71%)
- Yellow (42%)
- Black (22%)



- Cyan (22%)
- Magenta (78%)
- Yellow (55%)

Brightness & Saturation Gradients

These gradients show how the Hex color C73974 changes by changing the brightness by 10 percent. The first figure shows a shift by +10% for each color and the second figure -10%.

Similar to the brightness gradients but the following saturation gradients show a change of the Hex color C73974 by changing the saturation by 10% instead.

 C73974

 C73974

FFFFFF

 A9155C

 FF73A8

 8C0044

 FF8FC3

 6F002E

 FFABDF

 52001A

 FFC8FB

 390002

 FFE5FF

 0E0000

 000000

 C73974

 C73974

 C72568

 C74D80

 C7115D

 C7618B

 C70053

 C77597

 C789A3

 C79DAE

 C7B0BA

 C7C4C5

 C7D8D1

 C7ECDD

Harmonies

Analogous

The Analogous color harmony consists of three colors that are next to each other on the color wheel.



AB4AA5



C73974



C64242

Triad

The Triadic color harmony groups three colors that are evenly spaced from another and form a triangle on the color wheel.



C73974



577C00



0082C7

Complementary

The Complementary color scheme is a pair of colors which are on the opposite of each other on the color wheel.



C73974



39C78C

Split Complementary

Split-complementary colors differ from the complementary color scheme. The scheme consists of three colors, the original color and two neighbors of the complement color.



0087A1



C73974



008339

Square

The Square scheme is like the rectangle color scheme, but the four colors are evenly spaced on the color wheel.



C73974



896E00



00876E



0077D6

Rectangle

The Rectangle color scheme consists of four colors that form a rectangle on the color wheel.



C73974



B95123



00876E



0085BC

Sweetspot

The Sweet Spot groups the original color and five complimentary colors.



C73974



FFC9E0



8C39C7



80606D



000000



808080

Same Dimension

The Same Dimension uses a secret algorithm to generate beautiful new colors.



C73974



FF247F



C74539



635A5E



A30044



24000F

Inverse Universe

The Inverse Universe completely reimagines the original color for something new.



C73974



FF247F



39BBC7



635A5E



A30044



24000F

Previews

White Background



This preview shows how the Hex color C73974 looks on a white background.

Color Contrast Check

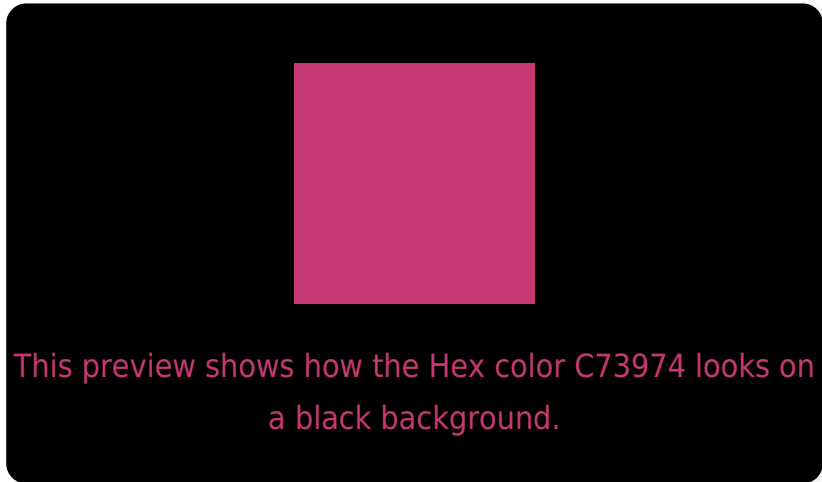
Large Text (above 18pt) WCAG AA ✓ Pass

Any Text WCAG AA ✓ Pass

Large Text (above 18pt) WCAG AAA ✓ Pass

Any Text WCAG AAA × Fail

Black Background



Color Contrast Check

Large Text (above 18pt) WCAG AA ✓ Pass

Any Text WCAG AA × Fail

Large Text (above 18pt) WCAG AAA × Fail

Any Text WCAG AAA × Fail

If you want to check with other color combinations, try the [Color Contrast Checker](#).

Hex C73974 Background



This preview shows how black text looks on a background with the Hex color C73974.




This preview shows how white text looks on a background with the Hex color C73974.

Color Blindness Simulation

Color vision deficiency is a very complex topic, and I could not describe the different causes any better than Wikipedia does, so if you want to learn more, you should check out their [article about color blindness](#).

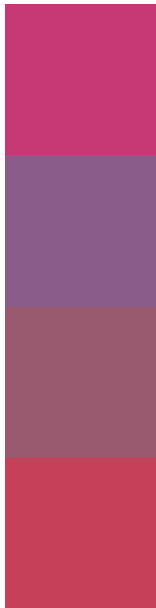
Dichromacy





Tritanopia
C44448

Trichromacy



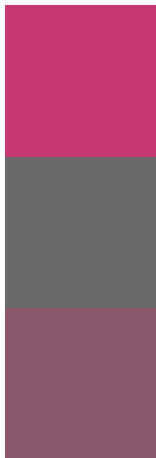
Original Color
C73974

Protanomaly
8A5C8A

Deuteranomaly
995A70

Tritanomaly
C54058

Monochromacy



Original Color
C73974

Achromatopsia
6A6A6A

Achromatomaly
8C586E

CSS Examples

Text

The CSS property to change the color of the text to Hex C73974 is called "color". The color property can be set on classes, ids or directly on the HTML element.

This example shows how text in the color #C73974 looks like.

```
.text, #text, p{  
    color:#C73974  
}
```

If you want to add a text shadow in that color use the text-shadow property, you can generate a text shadow directly with our [CSS Text Shadow Generator](#).

Here you see how black text with a 4 pixel #C73974 colored shadow looks like.

```
.shadow{ text-shadow: 4px 4px 2px #C73974
}
```

Border

The CSS property to change the border of an element to Hex C73974 is called "border". The border property can be set on classes, ids or directly on the HTML element.

This example shows the color as border, it can be applied via the CSS property "border" or "border-color".

```
.border, #border, table{ border:4px solid
#C73974 }
```

If only the border color should be changed use the property `border-color`.

```
.border{ border-color:#C73974 }
```

If you want to add a box shadow in that color use:

Here you see how a box with a 4 pixel #C73974 colored shadow looks like.

```
.boxshadow{ -moz-box-shadow:4px 4px 4px  
4px #C73974; -webkit-box-shadow:4px 4px  
4px 4px #C73974; box-shadow:4px 4px 4px  
4px #C73974 }
```

Background

The CSS property to change the background color of an element to Hex C73974 is called "background". The background property can be set on classes, ids or directly on the HTML element.

```
.background, #background, body{  
background:#C73974 }
```

If only the background color should be changed can be used:

```
.background{ background-color:#C73974 }
```

This example shows the color as background, it is applied via the CSS property "background".

To optimize and compress your CSS code, you can use our [online CSS compressor and optimizer](#) based on csstidy. If you want to create a linear or radial gradient as background or border, check our [CSS Gradient Generator](#).

Hey! You found this booklet interesting? Support Converting Colors with the new Membership Option!

The pro membership hides all ads, plus gives you double the colors in the color bucket, and more awesome pro features!

[Learn more, Memberships starting at \\$2.50/m!](#)

**Follow me
on Twitter!**

@ConvertingColor