

Converting Colors

Hex(C77979)

Have a look what the booklet for
Hex(C77979) contains.

Hex(C77979)	3
<i>Conversions</i>	4
<i>Details</i>	6
<i>Harmonies</i>	11
<i>Previews</i>	23
<i>Color Blindness Simulation</i>	26
<i>CSS Examples</i>	29

Color

Hex(C77979)

Conversions

Conversions Part 1

Format	Color
Hex	C77979
RGB	199, 121, 121
RGB Percent	78%, 47%, 47%
CMY	0.2196, 0.5255, 0.5255
CMYK	0.00, 0.39, 0.39, 0.22
HSL	0°, 41%, 63%
HSV	0°, 39%, 78%
XYZ	33.8418, 27.1973, 21.5551
YIQ	144.3220, 46.4880, 16.5360

Conversions

Conversions Part 2

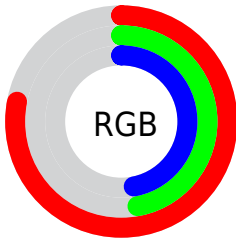
Format	Color
RYB	199, 121, 121
Decimal	13072761
CIELab	59.16, 30.43, 13.02
CIELCh	59, 33.101, 23.158
Yxy	27.1973, 0.4097, 0.3293
Android (android.graphics.Color)	4291262841 (0xFFC77979)
YUV	144.3220, -11.4977, 47.9526
Hunter-Lab	52.1511, 24.5675, 12.0000

Details

The Hex color **C77979** is a dark color, and the websafe version is hex **CC6666**. A complement of this color would be **79C7C7**, and the grayscale version is **909090**.

A 20% lighter version of the original color is **FFAEAD**, and **8E4749** is the 20% darker color. If you saturate the color by 10%, you get **C76565**, and if you desaturate by 10%, it is **C78D8D**.

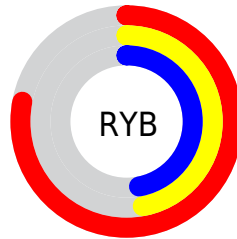
Distribution



Red (78%)

Green (47%)

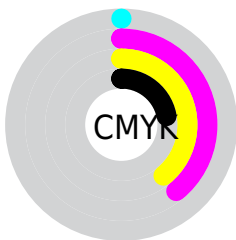
Blue (47%)



Red (78%)

Yellow (47%)

Blue (47%)

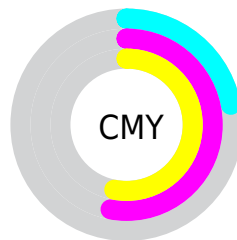


Cyan (0%)

Magenta (39%)

Yellow (39%)

Black (22%)



Cyan (22%)

Magenta (53%)

Yellow (53%)

Brightness & Saturation Gradients

These gradients show how the Hex color C77979 changes by changing the brightness by 10 percent. The first figure shows a shift by +10% for each color and the second figure -10%.

Similar to the brightness gradients but the following saturation gradients show a change of the Hex color C77979 by changing the saturation by 10% instead.

 C77979

 C77979

FFFFFF

 AA6060

 FFAEAD

 8E4749

 FFCAC9

 732F32

 FFE6E5

 58171D

 3F0004

 280001

 000000

 C77979

 C77979

 C76565

 C78D8D

 C75151

 C7A1A1

 C73D3D

 C7B5B5

 C72929

 C7C9C9

 C71515

 C7DDDD

 C70202

 C7F0F0

 C70000

 C7FFFF

Harmonies

Analogous

The Analogous color harmony consists of three colors that are next to each other on the color wheel.



C27896



C77979



BD8061

Triad

The Triadic color harmony groups three colors that are evenly spaced from another and form a triangle on the color wheel.



C77979



699A6B



5893C8

Complementary

The Complementary color scheme is a pair of colors which are on the opposite of each other on the color wheel.



C77979



79C7C7

Split Complementary

Split-complementary colors differ from the complementary color scheme. The scheme consists of three colors, the original color and two neighbors of the complement color.



239ABC



C77979



429E86

Square

The Square scheme is like the rectangle color scheme, but the four colors are evenly spaced on the color wheel.



C77979



8B9458



169EA4



8889C4

Rectangle

The Rectangle color scheme consists of four colors that form a rectangle on the color wheel.



C77979



B08757



169EA4



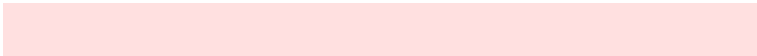
4796C5

Sweetspot

The Sweet Spot groups the original color and five complimentary colors.



C77979



FFE0E0



C779C7



806E6E



000000



808080

Same Dimension

The Same Dimension uses a secret algorithm to generate beautiful new colors.



C77979



FF8787



C7A079



635A5A



A30000



240000

Inverse Universe

The Inverse Universe completely reimagines the original color for something new.



79C7C7



87FFFF



79A0C7



5A6363



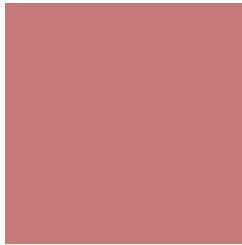
00A3A3



002424

Previews

White Background



This preview shows how the Hex color C77979 looks on a white background.

Color Contrast Check

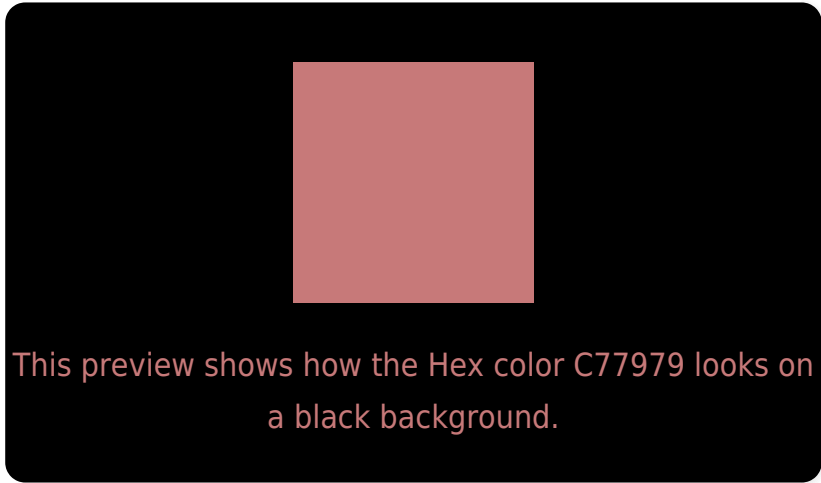
Large Text (above 18pt) WCAG AA ✓ Pass

Any Text WCAG AA × Fail

Large Text (above 18pt) WCAG AAA × Fail

Any Text WCAG AAA × Fail

Black Background



Color Contrast Check

Large Text (above 18pt) WCAG AA ✓ Pass

Any Text WCAG AA ✓ Pass

Large Text (above 18pt) WCAG AAA ✓ Pass

Any Text WCAG AAA × Fail

If you want to check with other color combinations, try the [Color Contrast Checker](#).

Hex C77979 Background



This preview shows how black text looks on a background with the Hex color C77979.



This preview shows how white text looks on a background with the Hex color C77979.

Color Blindness Simulation

Color vision deficiency is a very complex topic, and I could not describe the different causes any better than Wikipedia does, so if you want to learn more, you should check out their [article about color blindness](#).

Dichromacy



Original Color
C77979

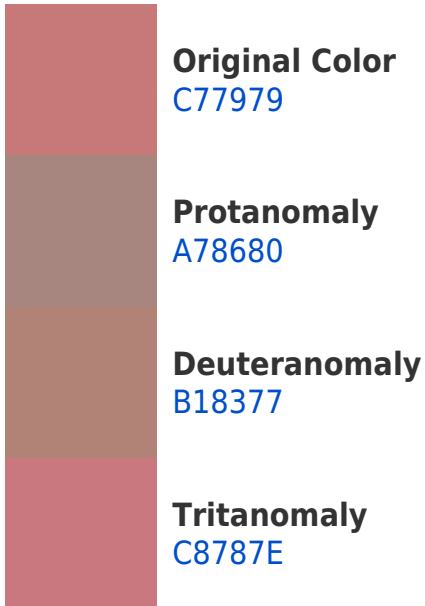
Protanopia
948E84

Deuteranopia
A58976

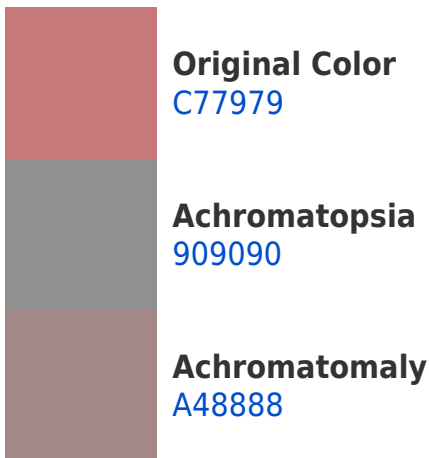


Tritanopia
C87881

Trichromacy



Monochromacy



CSS Examples

Text

The CSS property to change the color of the text to Hex C77979 is called "color". The color property can be set on classes, ids or directly on the HTML element.

This example shows how text in the color #C77979 looks like.

```
.text, #text, p{  
  color:#C77979  
}
```

If you want to add a text shadow in that color use the text-shadow property, you can generate a text shadow directly with our [CSS Text Shadow Generator](#).

Here you see how black text with a 4 pixel #C77979 colored shadow looks like.

```
.shadow{ text-shadow: 4px 4px 2px #C77979
}
```

Border

The CSS property to change the border of an element to Hex C77979 is called "border". The border property can be set on classes, ids or directly on the HTML element.

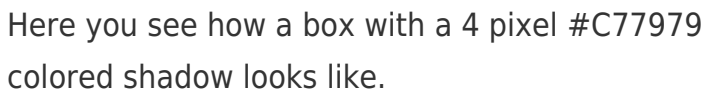
This example shows the color as border, it can be applied via the CSS property "border" or "border-color".

```
.border, #border, table{ border:4px solid
#C77979 }
```

If only the border color should be changed use the property `border-color`.

```
.border{ border-color:#C77979 }
```

If you want to add a box shadow in that color use:



Here you see how a box with a 4 pixel `#C77979` colored shadow looks like.

```
.boxshadow{ -moz-box-shadow:4px 4px 4px  
4px #C77979; -webkit-box-shadow:4px 4px  
4px 4px #C77979; box-shadow:4px 4px 4px  
4px #C77979 }
```

Background

The CSS property to change the background color of an element to Hex C77979 is called "background". The background property can be set on classes, ids or directly on the HTML element.

```
.background, #background, body{  
background:#C77979 }
```

If only the background color should be changed can be used:

```
.background{ background-color:#C77979 }
```

This example shows the color as background, it is applied via the CSS property "background".

To optimize and compress your CSS code, you can use our [online CSS compressor and optimizer](#) based on csstidy. If you want to create a linear or radial gradient as background or border, check our [CSS Gradient Generator](#).

Hey! You found this booklet interesting? Support Converting Colors with the new Membership Option!

The pro membership hides all ads, plus gives you double the colors in the color bucket, and more awesome pro features!

[Learn more, Memberships starting at \\$2.50/m!](#)

**Follow me
on Twitter!**

@ConvertingColor