

Converting Colors

Hex(C77F7C)

Have a look what the booklet for
Hex(C77F7C) contains.

Hex(C77F7C)	3
<i>Conversions</i>	4
<i>Details</i>	6
<i>Harmonies</i>	11
<i>Previews</i>	23
<i>Color Blindness Simulation</i>	26
<i>CSS Examples</i>	29

Color

Hex(C77F7C)

Conversions

Conversions Part 1

Format	Color
Hex	C77F7C
RGB	199, 127, 124
RGB Percent	78%, 50%, 49%
CMY	0.2196, 0.5020, 0.5137
CMYK	0.00, 0.36, 0.38, 0.22
HSL	2°, 40%, 63%
HSV	2°, 38%, 78%
XYZ	34.7807, 28.7761, 22.7900
YIQ	148.1860, 43.8750, 14.3310

Conversions

Conversions Part 2

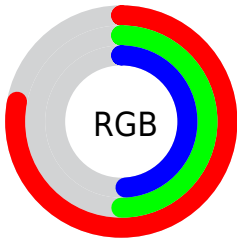
Format	Color
R_{YB}	199, 127, 124
Decimal	13074300
CIE _{Lab}	60.58, 27.53, 13.29
CIE _{LCh}	61, 30.572, 25.773
Yxy	28.7761, 0.4028, 0.3333
Android (android.graphics.Color)	4291264380 (0xFFC77F7C)
YUV	148.1860, -11.9237, 44.5639
Hunter-Lab	53.6434, 21.8579, 12.3614

Details

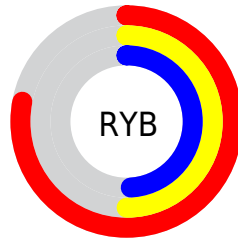
The Hex color **C77F7C** is a dark color, and the websafe version is hex **CC9999**. A complement of this color would be **7CC4C7**, and the grayscale version is **949494**.

A 20% lighter version of the original color is **FFB4B0**, and **8F4D4B** is the 20% darker color. If you saturate the color by 10%, you get **C76C68**, and if you desaturate by 10%, it is **C79290**.

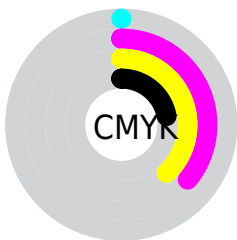
Distribution



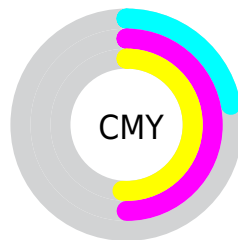
- Red (78%)
- Green (50%)
- Blue (49%)



- Red (78%)
- Yellow (50%)
- Blue (49%)



- Cyan (0%)
- Magenta (36%)
- Yellow (38%)
- Black (22%)



- Cyan (22%)
- Magenta (50%)
- Yellow (51%)

Brightness & Saturation Gradients

These gradients show how the Hex color C77F7C changes by changing the brightness by 10 percent. The first figure shows a shift by +10% for each color and the second figure -10%.

Similar to the brightness gradients but the following saturation gradients show a change of the Hex color C77F7C by changing the saturation by 10% instead.

 C77F7C

 C77F7C

FFFFFF

 AB6563

 FFB4B0

 8F4D4B

 FFD0CC

 743535

 FFEDE8

 591E1F

 400508

 2A0001

 000000

 C77F7C

 C77F7C

 C76C68

 C79290

 C75954

 C7A5A4

 C74640

 C7B8B8

 C7332C

 C7CBCC

 C71F19

 C7DFE0

 C70C05

 C7F2F3

 C70800

 C7FFFF

Harmonies

Analogous

The Analogous color harmony consists of three colors that are next to each other on the color wheel.



C37E97



C77F7C



BD8666

Triad

The Triadic color harmony groups three colors that are evenly spaced from another and form a triangle on the color wheel.



C77F7C



6D9E73



6796C7

Complementary

The Complementary color scheme is a pair of colors which are on the opposite of each other on the color wheel.



C77F7C



7CC4C7

Split Complementary

Split-complementary colors differ from the complementary color scheme. The scheme consists of three colors, the original color and two neighbors of the complement color.



3E9DBE



C77F7C



4CA18D

Square

The Square scheme is like the rectangle color scheme, but the four colors are evenly spaced on the color wheel.



C77F7C



8C9861



32A0A9



908DC3

Rectangle

The Rectangle color scheme consists of four colors that form a rectangle on the color wheel.



C77F7C



B08C5E



32A0A9



5899C6

Sweetspot

The Sweet Spot groups the original color and five complimentary colors.



C77F7C



FFE4E3



C77CC5



80706F



000000



808080

Same Dimension

The Same Dimension uses a secret algorithm to generate beautiful new colors.



C77F7C



FF918C



C7A47C



635A5A



A30700



240100

Inverse Universe

The Inverse Universe completely reimagines the original color for something new.



7CC4C7



8CFAFF



7C9FC7



5A6363



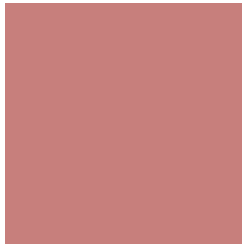
009DA3



002224

Previews

White Background



This preview shows how the Hex color C77F7C looks on a white background.

Color Contrast Check

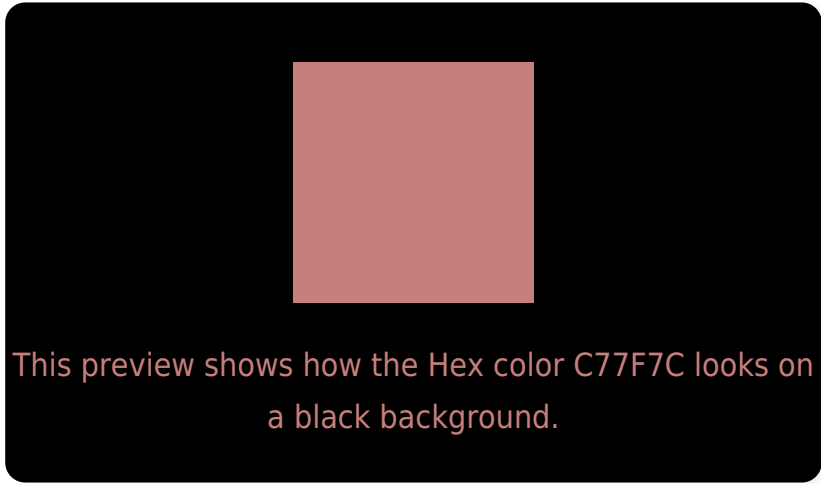
Large Text (above 18pt) WCAG AA ✓ Pass

Any Text WCAG AA ✗ Fail

Large Text (above 18pt) WCAG AAA ✗ Fail

Any Text WCAG AAA ✗ Fail

Black Background



Color Contrast Check

Large Text (above 18pt) WCAG AA ✓ Pass

Any Text WCAG AA ✓ Pass

Large Text (above 18pt) WCAG AAA ✓ Pass

Any Text WCAG AAA × Fail

If you want to check with other color combinations, try the [Color Contrast Checker](#).

Hex C77F7C Background



This preview shows how black text looks on a background with the Hex color C77F7C.

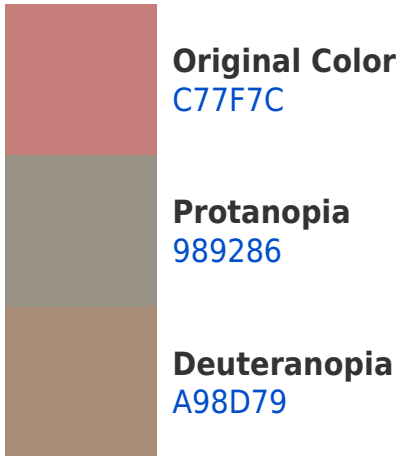


This preview shows how white text looks on a background with the Hex color C77F7C.

Color Blindness Simulation

Color vision deficiency is a very complex topic, and I could not describe the different causes any better than Wikipedia does, so if you want to learn more, you should check out their [article about color blindness](#).

Dichromacy





Tritanopia
C87D87

Trichromacy



Original Color
C77F7C

Protanomaly
A98B82

Deuteranomaly
B4887A

Tritanomaly
C87E83

Monochromacy



Original Color
C77F7C

Achromatopsia
949494

Achromatomaly
A78C8B

CSS Examples

Text

The CSS property to change the color of the text to Hex C77F7C is called "color". The color property can be set on classes, ids or directly on the HTML element.

This example shows how text in the color #C77F7C looks like.

```
.text, #text, p{  
    color:#C77F7C  
}
```

If you want to add a text shadow in that color use the text-shadow property, you can generate a text shadow directly with our [CSS Text Shadow Generator](#).

Here you see how black text with a 4 pixel #C77F7C colored shadow looks like.

```
.shadow{ text-shadow: 4px 4px 2px #C77F7C  
}
```

Border

The CSS property to change the border of an element to Hex C77F7C is called "border". The border property can be set on classes, ids or directly on the HTML element.

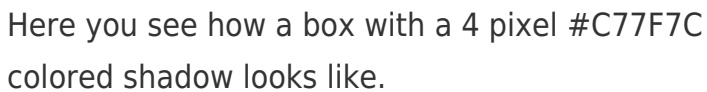
This example shows the color as border, it can be applied via the CSS property "border" or "border-color".

```
.border, #border, table{ border:4px solid  
#C77F7C }
```

If only the border color should be changed use the property `border-color`.

```
.border{ border-color:#C77F7C }
```

If you want to add a box shadow in that color use:



Here you see how a box with a 4 pixel #C77F7C colored shadow looks like.

```
.boxshadow{ -moz-box-shadow:4px 4px 4px  
4px #C77F7C; -webkit-box-shadow:4px 4px  
4px 4px #C77F7C; box-shadow:4px 4px 4px  
4px #C77F7C }
```

Background

The CSS property to change the background color of an element to Hex C77F7C is called "background". The background property can be set on classes, ids or directly on the HTML element.

```
.background, #background, body{  
background:#C77F7C }
```

If only the background color should be changed can be used:

```
.background{ background-color:#C77F7C }
```

This example shows the color as background, it is applied via the CSS property "background".

To optimize and compress your CSS code, you can use our [online CSS compressor and optimizer](#) based on csstidy. If you want to create a linear or radial gradient as background or border, check our [CSS Gradient Generator](#).

Hey! You found this booklet interesting? Support Converting Colors with the new Membership Option!

The pro membership hides all ads, plus gives you double the colors in the color bucket, and more awesome pro features!

[Learn more, Memberships starting at \\$2.50/m!](#)

**Follow me
on Twitter!**

@ConvertingColor