

Converting Colors

Hex(C78A56)

Have a look what the booklet for
Hex(C78A56) contains.

Hex(C78A56)	3
<i>Conversions</i>	4
<i>Details</i>	6
<i>Harmonies</i>	11
<i>Previews</i>	23
<i>Color Blindness Simulation</i>	26
<i>CSS Examples</i>	29

Color

Hex(C78A56)

Conversions

Conversions Part 1

Format	Color
Hex	C78A56
RGB	199, 138, 86
RGB Percent	78%, 54%, 34%
CMY	0.2196, 0.4588, 0.6627
CMYK	0.00, 0.31, 0.57, 0.22
HSL	28°, 50%, 56%
HSV	28°, 57%, 78%
XYZ	34.3214, 30.9910, 12.9770
YIQ	150.3110, 53.0480, -3.2400

Conversions

Conversions Part 2

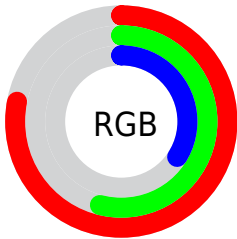
Format	Color
RYB	199, 182, 86
Decimal	13077078
CIELab	62.50, 17.69, 36.92
CIELCh	62, 40.939, 64.401
Yxy	30.9910, 0.4384, 0.3959
Android (android.graphics.Color)	4291267158 (0xFFC78A56)
YUV	150.3110, -31.7053, 42.7003
Hunter-Lab	55.6695, 12.6272, 25.1477

Details

The Hex color **C78A56** is a dark color, and the websafe version is hex **CC9966**. The color can be described as middle muted orange. A complement of this color would be **5693C7**, and the grayscale version is **979797**.

A 20% lighter version of the original color is **FFC089**, and **8E5826** is the 20% darker color. If you saturate the color by 10%, you get **C77F42**, and if you desaturate by 10%, it is **C7956A**.

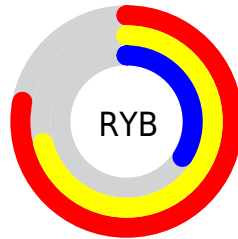
Distribution



Red (78%)

Green (54%)

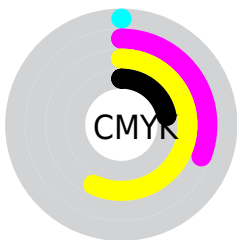
Blue (34%)



Red (78%)

Yellow (71%)

Blue (34%)

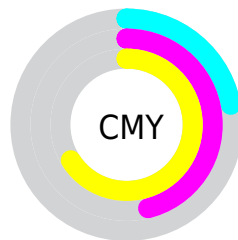


Cyan (0%)

Magenta (31%)

Yellow (57%)

Black (22%)



Cyan (22%)

Magenta (46%)

Yellow (66%)

Brightness & Saturation Gradients

These gradients show how the Hex color C78A56 changes by changing the brightness by 10 percent. The first figure shows a shift by +10% for each color and the second figure -10%.

Similar to the brightness gradients but the following saturation gradients show a change of the Hex color C78A56 by changing the saturation by 10% instead.

 C78A56

 C78A56

FFFFFF

 AA703E

 FFC089

 8E5826

 FFDBA3

 72400F

 FFF8BF

 572A00

 FFFFDB

 3C1500

 FFFF8

 250000

 000000

 C78A56

 C78A56

 C77F42

 C7956A

 C7752E

 C79F7E

 C76A1A

 C7AA92

 C75F06

 C7B5A6

 C75C00

 C7C0BA

 C7CACD

 C7D5E1

 C7E0F5

 C7EBFF

Harmonies

Analogous

The Analogous color harmony consists of three colors that are next to each other on the color wheel.



DA7E70



C78A56



A9974D

Triad

The Triadic color harmony groups three colors that are evenly spaced from another and form a triangle on the color wheel.



C78A56



00AA9B



A28CD3

Complementary

The Complementary color scheme is a pair of colors which are on the opposite of each other on the color wheel.



C78A56



5693C7

Split Complementary

Split-complementary colors differ from the complementary color scheme. The scheme consists of three colors, the original color and two neighbors of the complement color.



6699DF



C78A56



00A9BF

Square

The Square scheme is like the rectangle color scheme, but the four colors are evenly spaced on the color wheel.



C78A56



54A776



00A3D8



C97FB7

Rectangle

The Rectangle color scheme consists of four colors that form a rectangle on the color wheel.



C78A56



909E53



00A3D8



9090D9

Sweetspot

The Sweet Spot groups the original color and five complimentary colors.



C78A56



FFE8D4



C75694



807266



000000



808080

Same Dimension

The Same Dimension uses a secret algorithm to generate beautiful new colors.



C78A56



FFA152



C7C156



635E5A



A34B00



241000

Inverse Universe

The Inverse Universe completely reimagines the original color for something new.



5693C7



52AFFF



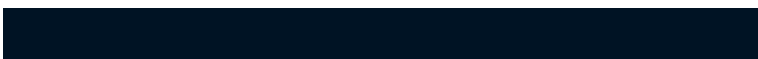
565CC7



5A5F63



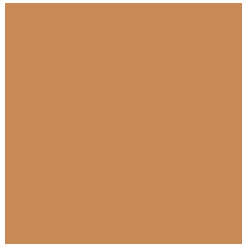
0058A3



001324

Previews

White Background



This preview shows how the Hex color C78A56 looks on a white background.

Color Contrast Check

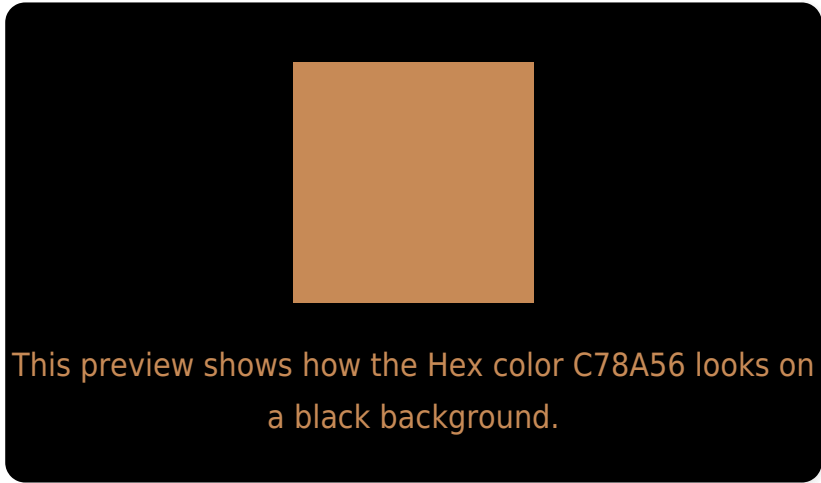
Large Text (above 18pt) WCAG AA × Fail

Any Text WCAG AA × Fail

Large Text (above 18pt) WCAG AAA × Fail

Any Text WCAG AAA × Fail

Black Background



Color Contrast Check

Large Text (above 18pt) WCAG AA ✓ Pass

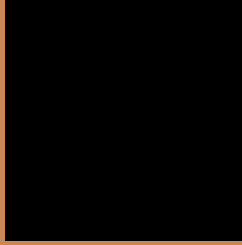
Any Text WCAG AA ✓ Pass

Large Text (above 18pt) WCAG AAA ✓ Pass

Any Text WCAG AAA ✓ Pass

If you want to check with other color combinations, try the [Color Contrast Checker](#).

Hex C78A56 Background



This preview shows how black text looks on a background with the Hex color C78A56.



This preview shows how white text looks on a background with the Hex color C78A56.

Color Blindness Simulation

Color vision deficiency is a very complex topic, and I could not describe the different causes any better than Wikipedia does, so if you want to learn more, you should check out their [article about color blindness](#).


Dichromacy



Original Color
C78A56

Protanopia
A6985B

Deuteranopia
B99055

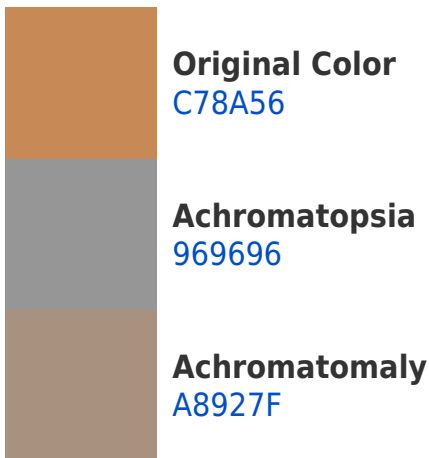


Tritanopia
CB838D

Trichromacy



Monochromacy



CSS Examples

Text

The CSS property to change the color of the text to Hex C78A56 is called "color". The color property can be set on classes, ids or directly on the HTML element.

This example shows how text in the color #C78A56 looks like.

```
.text, #text, p{  
    color:#C78A56  
}
```

If you want to add a text shadow in that color use the text-shadow property, you can generate a text shadow directly with our [CSS Text Shadow Generator](#).

Here you see how black text with a 4 pixel #C78A56 colored shadow looks like.

```
.shadow{ text-shadow: 4px 4px 2px #C78A56
}
```

Border

The CSS property to change the border of an element to Hex C78A56 is called "border". The border property can be set on classes, ids or directly on the HTML element.

This example shows the color as border, it can be applied via the CSS property "border" or "border-color".

```
.border, #border, table{ border:4px solid
#C78A56 }
```

If only the border color should be changed use the property border-color.

```
.border{ border-color:#C78A56 }
```

If you want to add a box shadow in that color use:

Here you see how a box with a 4 pixel #C78A56 colored shadow looks like.

```
.boxshadow{ -moz-box-shadow:4px 4px 4px  
4px #C78A56; -webkit-box-shadow:4px 4px  
4px 4px #C78A56; box-shadow:4px 4px 4px  
4px #C78A56 }
```

Background

The CSS property to change the background color of an element to Hex C78A56 is called "background". The background property can be set on classes, ids or directly on the HTML element.

```
.background, #background, body{  
background:#C78A56 }
```

If only the background color should be changed can be used:

```
.background{ background-color:#C78A56 }
```

This example shows the color as background, it is applied via the CSS property "background".

To optimize and compress your CSS code, you can use our [online CSS compressor and optimizer](#) based on csstidy. If you want to create a linear or radial gradient as background or border, check our [CSS Gradient Generator](#).

Hey! You found this booklet interesting? Support Converting Colors with the new Membership Option!

The pro membership hides all ads, plus gives you double the colors in the color bucket, and more awesome pro features!

[Learn more, Memberships starting at \\$2.50/m!](#)

**Follow me
on Twitter!**

@ConvertingColor