

Converting Colors

Hex(C79188)

Have a look what the booklet for
Hex(C79188) contains.

Hex(C79188)	3
<i>Conversions</i>	4
<i>Details</i>	6
<i>Harmonies</i>	11
<i>Previews</i>	23
<i>Color Blindness Simulation</i>	26
<i>CSS Examples</i>	29

Color

Hex(C79188)

Conversions

Conversions Part 1

Format	Color
Hex	C79188
RGB	199, 145, 136
RGB Percent	78%, 57%, 53%
CMY	0.2196, 0.4314, 0.4667
CMYK	0.00, 0.27, 0.32, 0.22
HSL	9°, 36%, 66%
HSV	9°, 32%, 78%
XYZ	38.1225, 34.1705, 27.8788
YIQ	160.1200, 35.0730, 8.6490

Conversions

Conversions Part 2

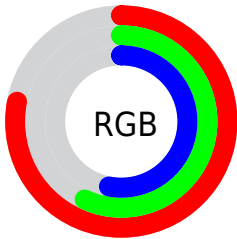
Format	Color
R_{YB}	199, 147, 136
Decimal	13078920
CIE _{Lab}	65.10, 19.18, 12.82
CIE _{LCh}	65, 23.071, 33.769
Yxy	34.1705, 0.3806, 0.3411
Android (android.graphics.Color)	4291269000 (0xFFC79188)
YUV	160.1200, -11.8912, 34.0978
Hunter-Lab	58.4555, 14.1139, 12.6420

Details

The Hex color **C79188** is a light color, and the websafe version is hex **CC9999**. A complement of this color would be **88BEC7**, and the grayscale version is **A0A0A0**.

A 20% lighter version of the original color is **FFC7BD**, and **905E56** is the 20% darker color. If you saturate the color by 10%, you get **C78074**, and if you desaturate by 10%, it is **C7A29C**.

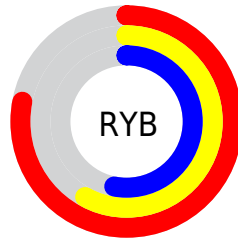
Distribution



Red (78%)

Green (57%)

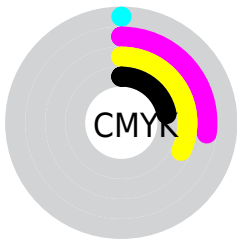
Blue (53%)



Red (78%)

Yellow (58%)

Blue (53%)

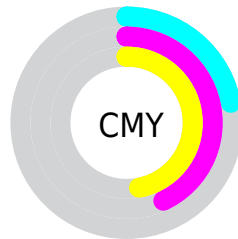


Cyan (0%)

Magenta (27%)

Yellow (32%)

Black (22%)



Cyan (22%)

Magenta (43%)

Yellow (47%)

Brightness & Saturation Gradients

These gradients show how the Hex color C79188 changes by changing the brightness by 10 percent. The first figure shows a shift by +10% for each color and the second figure -10%.

Similar to the brightness gradients but the following saturation gradients show a change of the Hex color C79188 by changing the saturation by 10% instead.



C79188



C79188

FFFFFF



AB776F



FFC7BD



905E56



FFE3D9



75463F



FFFFF6



5B2F29



421A15



2B0200



000000



C79188



C79188



C78074



C7A29C

 C76F60

 C7B3B0

 C75E4C

 C7C4C4

 C74D38

 C7D5D8

 C73C25

 C7E6EC

 C72B11

 C7F7FF

 C71C00

 C7FFFF

Harmonies

Analogous

The Analogous color harmony consists of three colors that are next to each other on the color wheel.



C78F9C



C79188



BD977A

Triad

The Triadic color harmony groups three colors that are evenly spaced from another and form a triangle on the color wheel.



C79188



7DA88B



889FC7

Complementary

The Complementary color scheme is a pair of colors which are on the opposite of each other on the color wheel.



C79188



88BEC7

Split Complementary

Split-complementary colors differ from the complementary color scheme. The scheme consists of three colors, the original color and two neighbors of the complement color.



6EA5C2



C79188



69AAA0

Square

The Square scheme is like the rectangle color scheme, but the four colors are evenly spaced on the color wheel.



C79188



94A47B



62A9B4



A598C0

Rectangle

The Rectangle color scheme consists of four colors that form a rectangle on the color wheel.



C79188



B19B75



62A9B4



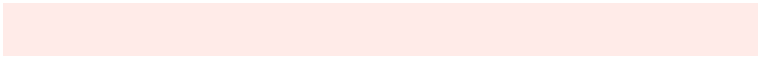
7FA1C7

Sweetspot

The Sweet Spot groups the original color and five complimentary colors.



C79188



FFEBE8



C788BF



807371



000000



808080

Same Dimension

The Same Dimension uses a secret algorithm to generate beautiful new colors.



C79188



FFAC9E



C7B088



635B5A



A31700



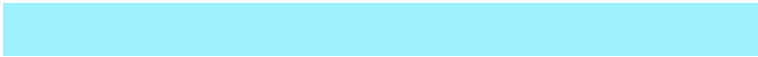
240500

Inverse Universe

The Inverse Universe completely reimagines the original color for something new.



88BEC7



9EF1FF



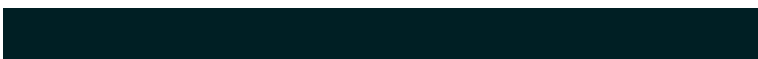
889FC7



5A6263



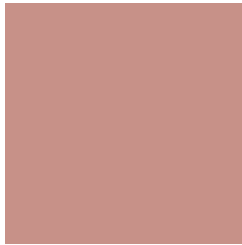
008CA3



001F24

Previews

White Background



This preview shows how the Hex color C79188 looks on a white background.

Color Contrast Check

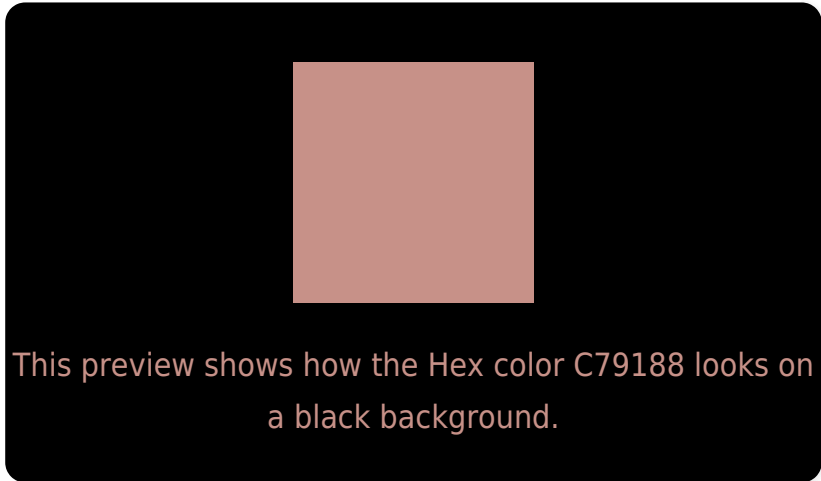
Large Text (above 18pt) WCAG AA × Fail

Any Text WCAG AA × Fail

Large Text (above 18pt) WCAG AAA × Fail

Any Text WCAG AAA × Fail

Black Background



Color Contrast Check

Large Text (above 18pt) WCAG AA ✓ Pass

Any Text WCAG AA ✓ Pass

Large Text (above 18pt) WCAG AAA ✓ Pass

Any Text WCAG AAA ✓ Pass

If you want to check with other color combinations, try the [Color Contrast Checker](#).

Hex C79188 Background



This preview shows how black text looks on a background with the Hex color C79188.



This preview shows how white text looks on a background with the Hex color C79188.

Color Blindness Simulation

Color vision deficiency is a very complex topic, and I could not describe the different causes any better than Wikipedia does, so if you want to learn more, you should check out their [article about color blindness](#).

Dichromacy



Original Color
C79188

Protanopia
A59E8F

Deuteranopia
B69887



Tritanopia
C98E99

Trichromacy



Original Color
C79188

Protanomaly
B1998C

Deuteranomaly
BC9587

Tritanomaly
C88F93

Monochromacy



Original Color
C79188

Achromatopsia
A0A0A0

Achromatomaly
AE9B97

CSS Examples

Text

The CSS property to change the color of the text to Hex C79188 is called "color". The color property can be set on classes, ids or directly on the HTML element.

This example shows how text in the color #C79188 looks like.

```
.text, #text, p{  
    color:#C79188  
}
```

If you want to add a text shadow in that color use the text-shadow property, you can generate a text shadow directly with our [CSS Text Shadow Generator](#).

Here you see how black text with a 4 pixel #C79188 colored shadow looks like.

```
.shadow{ text-shadow: 4px 4px 2px #C79188
}
```

Border

The CSS property to change the border of an element to Hex C79188 is called "border". The border property can be set on classes, ids or directly on the HTML element.

This example shows the color as border, it can be applied via the CSS property "border" or "border-color".

```
.border, #border, table{ border:4px solid
#C79188 }
```

If only the border color should be changed use the property border-color.

```
.border{ border-color:#C79188 }
```

If you want to add a box shadow in that color use:

Here you see how a box with a 4 pixel #C79188 colored shadow looks like.

```
.boxshadow{ -moz-box-shadow:4px 4px 4px  
4px #C79188; -webkit-box-shadow:4px 4px  
4px 4px #C79188; box-shadow:4px 4px 4px  
4px #C79188 }
```

Background

The CSS property to change the background color of an element to Hex C79188 is called "background". The background property can be set on classes, ids or directly on the HTML element.

```
.background, #background, body{  
background:#C79188 }
```

If only the background color should be changed can be used:

```
.background{ background-color:#C79188 }
```

This example shows the color as background, it is applied via the CSS property "background".

To optimize and compress your CSS code, you can use our [online CSS compressor and optimizer](#) based on csstidy. If you want to create a linear or radial gradient as background or border, check our [CSS Gradient Generator](#).

Hey! You found this booklet interesting? Support Converting Colors with the new Membership Option!

The pro membership hides all ads, plus gives you double the colors in the color bucket, and more awesome pro features!

[Learn more, Memberships starting at \\$2.50/m!](#)

**Follow me
on Twitter!**

@ConvertingColor