

Converting Colors

Hex(C79C9A)

Have a look what the booklet for
Hex(C79C9A) contains.

Hex(C79C9A)	3
<i>Conversions</i>	4
<i>Details</i>	6
<i>Harmonies</i>	11
<i>Previews</i>	23
<i>Color Blindness Simulation</i>	26
<i>CSS Examples</i>	29

Color

Hex(C79C9A)

Conversions

Conversions Part 1

Format	Color
Hex	C79C9A
RGB	199, 156, 154
RGB Percent	78%, 61%, 60%
CMY	0.2196, 0.3882, 0.3961
CMYK	0.00, 0.22, 0.23, 0.22
HSL	3°, 29%, 69%
HSV	3°, 23%, 78%
XYZ	41.2744, 38.2521, 35.7799
YIQ	168.6290, 26.2700, 8.4940

Conversions

Conversions Part 2

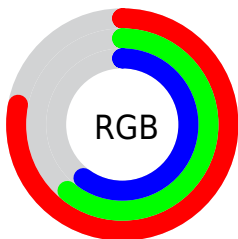
Format	Color
RYB	199, 156, 154
Decimal	13081754
CIELab	68.21, 15.68, 7.17
CIElCh	68, 17.237, 24.577
Yxy	38.2521, 0.3580, 0.3317
Android (android.graphics.Color)	4291271834 (0xFFC79C9A)
YUV	168.6290, -7.2121, 26.6354
Hunter-Lab	61.8483, 10.8872, 8.9940

Details

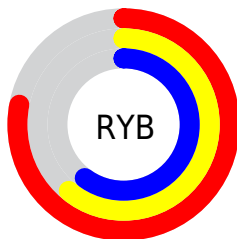
The Hex color **C79C9A** is a light color, and the websafe version is hex **CC9999**. A complement of this color would be **9AC5C7**, and the grayscale version is **A9A9A9**.

A 20% lighter version of the original color is **FFD3D0**, and **906967** is the 20% darker color. If you saturate the color by 10%, you get **C78986**, and if you desaturate by 10%, it is **C7AFAE**.

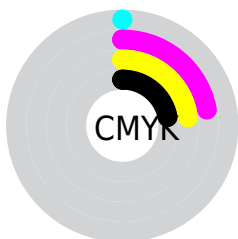
Distribution



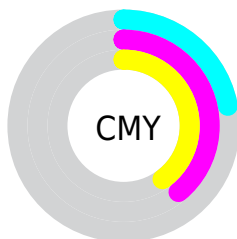
- Red (78%)
- Green (61%)
- Blue (60%)



- Red (78%)
- Yellow (61%)
- Blue (60%)



- Cyan (0%)
- Magenta (22%)
- Yellow (23%)
- Black (22%)



- Cyan (22%)
- Magenta (39%)
- Yellow (40%)

Brightness & Saturation Gradients

These gradients show how the Hex color C79C9A changes by changing the brightness by 10 percent. The first figure shows a shift by +10% for each color and the second figure -10%.

Similar to the brightness gradients but the following saturation gradients show a change of the Hex color C79C9A by changing the saturation by 10% instead.

 C79C9A

 C79C9A

FFFFFF

 AB8280

 FFD3D0

 906967

 FFEFED

 76504F

 5D3938

 442323

 2D0E0D

 130000

 000000

 C79C9A

 C79C9A

 C78986

 C7AFAE

 C77672

 C7C2C2

 C7635E

 C7D5D6

 C7504A

 C7E8EA

 C73D36

 C7FBFE

 C72A23

 C7FFFF

 C7170F

 C70900

Harmonies

Analogous

The Analogous color harmony consists of three colors that are next to each other on the color wheel.



C49CAA



C79C9A



C29F8D

Triad

The Triadic color harmony groups three colors that are evenly spaced from another and form a triangle on the color wheel.



C79C9A



93AD94



91A8C5

Complementary

The Complementary color scheme is a pair of colors which are on the opposite of each other on the color wheel.



C79C9A



9AC5C7

Split Complementary

Split-complementary colors differ from the complementary color scheme. The scheme consists of three colors, the original color and two neighbors of the complement color.



82ADBF



C79C9A



84AFA3

Square

The Square scheme is like the rectangle color scheme, but the four colors are evenly spaced on the color wheel.



C79C9A



A5A98A



7DAFB3



A6A3C2

Rectangle

The Rectangle color scheme consists of four colors that form a rectangle on the color wheel.



C79C9A



BAA289



7DAFB3



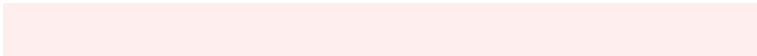
8BAAC4

Sweetspot

The Sweet Spot groups the original color and five complimentary colors.



C79C9A



FFEEED



C79AC6



807675



000000



808080

Same Dimension

The Same Dimension uses a secret algorithm to generate beautiful new colors.



C79C9A



FFBDBA



C7B29A



635A5A



A30700



240200

Inverse Universe

The Inverse Universe completely reimagines the original color for something new.



9AC5C7



BAFCFF



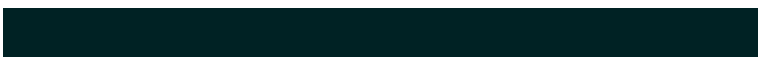
9AAFC7



5A6363



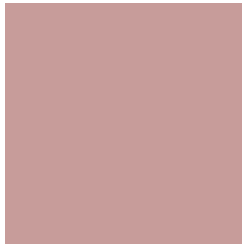
009CA3



002224

Previews

White Background



This preview shows how the Hex color C79C9A looks on a white background.

Color Contrast Check

Large Text (above 18pt) WCAG AA × Fail

Any Text WCAG AA × Fail

Large Text (above 18pt) WCAG AAA × Fail

Any Text WCAG AAA × Fail

Black Background



This preview shows how the Hex color C79C9A looks on a black background.

Color Contrast Check

Large Text (above 18pt) WCAG AA ✓ Pass

Any Text WCAG AA ✓ Pass

Large Text (above 18pt) WCAG AAA ✓ Pass

Any Text WCAG AAA ✓ Pass

If you want to check with other color combinations, try the [Color Contrast Checker](#).

Hex C79C9A Background



This preview shows how black text looks on a background with the Hex color C79C9A.

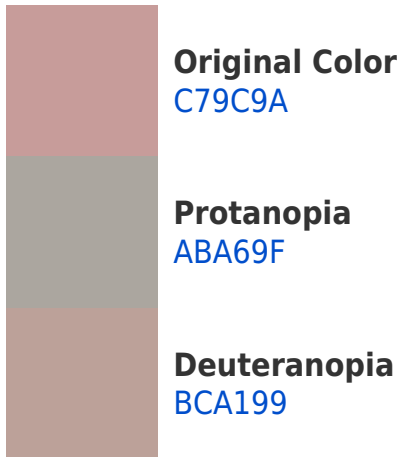


This preview shows how white text looks on a background with the Hex color C79C9A.

Color Blindness Simulation

Color vision deficiency is a very complex topic, and I could not describe the different causes any better than Wikipedia does, so if you want to learn more, you should check out their [article about color blindness](#).

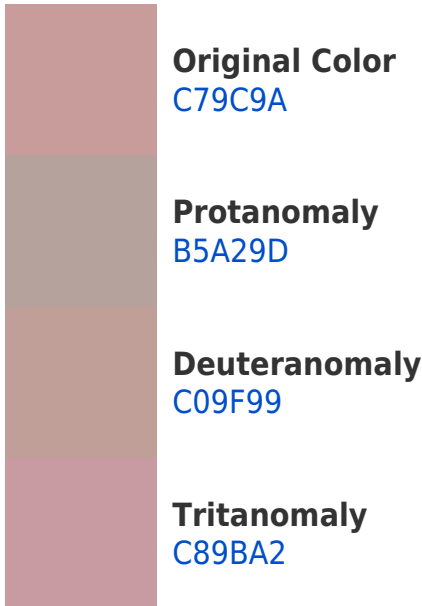
Dichromacy



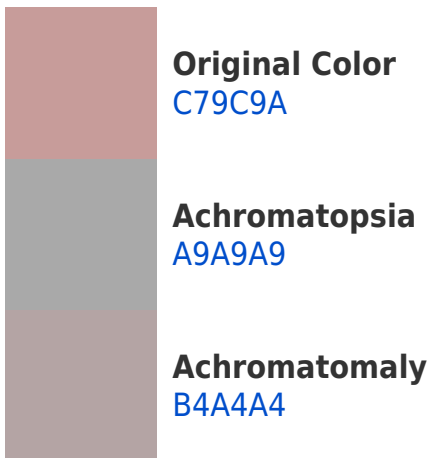


Tritanopia
C89AA6

Trichromacy



Monochromacy



CSS Examples

Text

The CSS property to change the color of the text to Hex C79C9A is called "color". The color property can be set on classes, ids or directly on the HTML element.

This example shows how text in the color #C79C9A looks like.

```
.text, #text, p{  
    color:#C79C9A  
}
```

If you want to add a text shadow in that color use the text-shadow property, you can generate a text shadow directly with our [CSS Text Shadow Generator](#).

Here you see how black text with a 4 pixel #C79C9A colored shadow looks like.

```
.shadow{ text-shadow: 4px 4px 2px #C79C9A
}
```

Border

The CSS property to change the border of an element to Hex C79C9A is called "border". The border property can be set on classes, ids or directly on the HTML element.

This example shows the color as border, it can be applied via the CSS property "border" or "border-color".

```
.border, #border, table{ border:4px solid
#C79C9A }
```

If only the border color should be changed use the property `border-color`.

```
.border{ border-color:#C79C9A }
```

If you want to add a box shadow in that color use:

Here you see how a box with a 4 pixel #C79C9A colored shadow looks like.

```
.boxshadow{ -moz-box-shadow:4px 4px 4px  
4px #C79C9A; -webkit-box-shadow:4px 4px  
4px 4px #C79C9A; box-shadow:4px 4px 4px  
4px #C79C9A }
```

Background

The CSS property to change the background color of an element to Hex C79C9A is called "background". The background property can be set on classes, ids or directly on the HTML element.

```
.background, #background, body{  
background:#C79C9A }
```

If only the background color should be changed can be used:

```
.background{ background-color:#C79C9A }
```

This example shows the color as background, it is applied via the CSS property "background".

To optimize and compress your CSS code, you can use our [online CSS compressor and optimizer](#) based on csstidy. If you want to create a linear or radial gradient as background or border, check our [CSS Gradient Generator](#).

Hey! You found this booklet interesting? Support Converting Colors with the new Membership Option!

The pro membership hides all ads, plus gives you double the colors in the color bucket, and more awesome pro features!

[Learn more, Memberships starting at \\$2.50/m!](#)

**Follow me
on Twitter!**

@ConvertingColor