

# Converting Colors

Hex(C79CA5)

Have a look what the booklet for  
Hex(C79CA5) contains.

<b>Hex(C79CA5)</b> .....	3
<b><i>Conversions</i></b> .....	4
<b><i>Details</i></b> .....	6
<b><i>Harmonies</i></b> .....	11
<b><i>Previews</i></b> .....	23
<b><i>Color Blindness Simulation</i></b> .....	26
<b><i>CSS Examples</i></b> .....	29

# **Color**

**Hex(C79CA5)**

# Conversions

## Conversions Part 1

<b>Format</b>	<b>Color</b>
Hex	C79CA5
RGB	199, 156, 165
RGB Percent	78%, 61%, 65%
CMY	0.2196, 0.3882, 0.3529
CMYK	0.00, 0.22, 0.17, 0.22
HSL	347°, 28%, 70%
HSV	347°, 22%, 78%
XYZ	42.2332, 38.6357, 40.8288
YIQ	169.8830, 22.7390, 11.9150

# Conversions

## Conversions Part 2

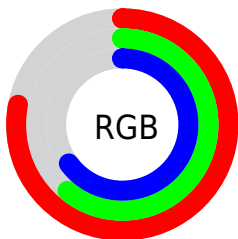
Format	Color
<a href="#">RYB</a>	<a href="#">199, 156, 165</a>
Decimal	<a href="#">13081765</a>
CIELab	<a href="#">68.49, 17.38, 1.44</a>
CIELCh	<a href="#">68, 17.435, 4.751</a>
Yxy	<a href="#">38.6357, 0.3470, 0.3175</a>
Android (android.graphics.Color)	<a href="#">4291271845 (0xFFC79CA5)</a>
YUV	<a href="#">169.8830, -2.4073, 25.5356</a>
Hunter-Lab	<a href="#">62.1576, 12.5066, 4.5651</a>

# Details

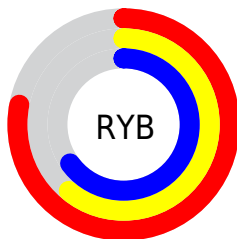
The Hex color **C79CA5** is a light color, and the websafe version is hex **CC9999**. A complement of this color would be **9CC7BE**, and the grayscale version is **AAAAAA**.

A 20% lighter version of the original color is **FFD3DC**, and **906971** is the 20% darker color. If you saturate the color by 10%, you get **C78895**, and if you desaturate by 10%, it is **C7B0B5**.

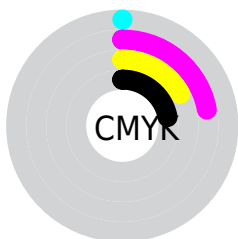
# Distribution



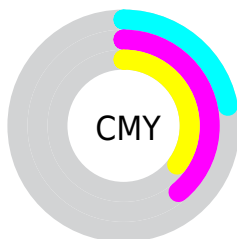
- Red (78%)
- Green (61%)
- Blue (65%)



- Red (78%)
- Yellow (61%)
- Blue (65%)



- Cyan (0%)
- Magenta (22%)
- Yellow (17%)
- Black (22%)



- Cyan (22%)
- Magenta (39%)
- Yellow (35%)

# Brightness & Saturation Gradients

These gradients show how the Hex color C79CA5 changes by changing the brightness by 10 percent. The first figure shows a shift by +10% for each color and the second figure -10%.

Similar to the brightness gradients but the following saturation gradients show a change of the Hex color C79CA5 by changing the saturation by 10% instead.





C79CA5



C79CA5

FFFFFF



AB828B



FFD3DC



906971



FFEFF8



765059



5D3942



45232B



2D0E17



170000



000000



C79CA5



C79CA5

 C78895

 C7B0B5

 C77486

 C7C4C4

 C76076

 C7D8D4

 C74C66

 C7ECE4

 C73956

 C7FFF4

 C72547

 C7FFFF

 C71137

 C7002A

# Harmonies

## Analogous

The Analogous color harmony consists of three colors that are next to each other on the color wheel.



BE9EB5



C79CA5



C79D96

# Triad

The Triadic color harmony groups three colors that are evenly spaced from another and form a triangle on the color wheel.



C79CA5



9FAC8D



86ACC3

# Complementary

The Complementary color scheme is a pair of colors which are on the opposite of each other on the color wheel.



C79CA5



9CC7BE

# Split Complementary

Split-complementary colors differ from the complementary color scheme. The scheme consists of three colors, the original color and two neighbors of the complement color.



7DAFB8



C79CA5



8EAF99

# Square

The Square scheme is like the rectangle color scheme, but the four colors are evenly spaced on the color wheel.



C79CA5



B1A788



81B0A9



98A8C6

# Rectangle

The Rectangle color scheme consists of four colors that form a rectangle on the color wheel.



C79CA5



C3A08E



81B0A9



82AEC0



# Sweetspot

The Sweet Spot groups the original color and five complimentary colors.



C79CA5



FFF0F3



BE9CC7



807778



000000



808080



# Same Dimension

The Same Dimension uses a secret algorithm to generate beautiful new colors.



C79CA5



FFBDCB



C7A89C



635A5C



A30022



240007



# Inverse Universe

The Inverse Universe completely reimagines the original color for something new.



C79CA5



FFBDCB



9CBBC7



635A5C



A30022

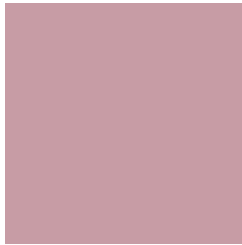


240007



# Previews

## White Background



This preview shows how the Hex color C79CA5 looks on a white background.

## Color Contrast Check

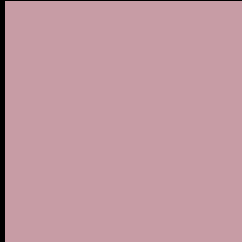
Large Text (above 18pt) WCAG AA × Fail

Any Text WCAG AA × Fail

Large Text (above 18pt) WCAG AAA × Fail

Any Text WCAG AAA × Fail

# Black Background



This preview shows how the Hex color C79CA5 looks on a black background.

## Color Contrast Check

Large Text (above 18pt) WCAG AA ✓ Pass

Any Text WCAG AA ✓ Pass

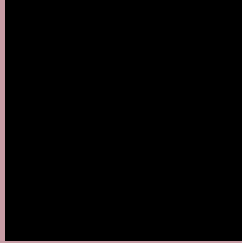
Large Text (above 18pt) WCAG AAA ✓ Pass

Any Text WCAG AAA ✓ Pass

If you want to check with other color combinations, try the [Color Contrast Checker](#).



## Hex C79CA5 Background



This preview shows how black text looks on a background with the Hex color C79CA5.

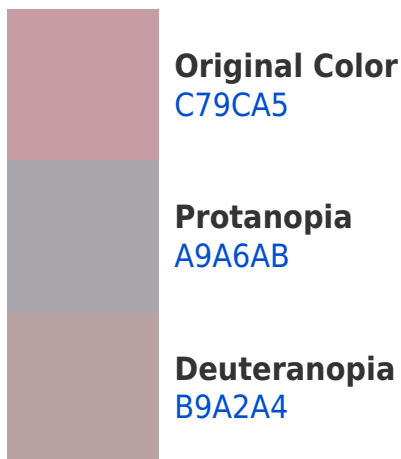


This preview shows how white text looks on a background with the Hex color C79CA5.

# Color Blindness Simulation

Color vision deficiency is a very complex topic, and I could not describe the different causes any better than Wikipedia does, so if you want to learn more, you should check out their [article about color blindness](#).

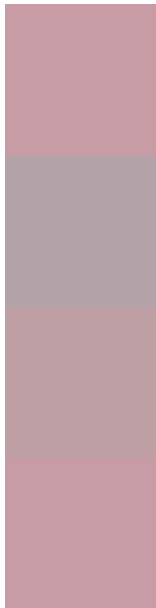
## Dichromacy





**Tritanopia**  
C79CA8

# Trichromacy



**Original Color**  
C79CA5

**Protanomaly**  
B4A2A9

**Deuteranomaly**  
BEA0A4

**Tritanomaly**  
C79CA7

# Monochromacy



**Original Color**  
C79CA5

**Achromatopsia**  
AAAAAA

**Achromatomaly**  
B5A5A8

# CSS Examples

## Text

The CSS property to change the color of the text to Hex C79CA5 is called "color". The color property can be set on classes, ids or directly on the HTML element.

This example shows how text in the color #C79CA5 looks like.

```
.text, #text, p{  
  color:#C79CA5  
}
```

If you want to add a text shadow in that color use the text-shadow property, you can generate a text shadow directly with our [CSS Text Shadow Generator](#).

Here you see how black text with a 4 pixel #C79CA5 colored shadow looks like.

```
.shadow{ text-shadow: 4px 4px 2px #C79CA5  
}
```

## Border

The CSS property to change the border of an element to Hex C79CA5 is called "border". The border property can be set on classes, ids or directly on the HTML element.

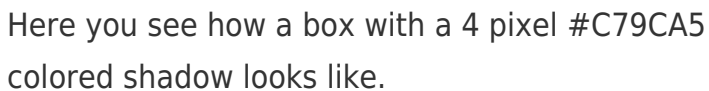
This example shows the color as border, it can be applied via the CSS property "border" or "border-color".

```
.border, #border, table{ border:4px solid  
#C79CA5 }
```

If only the border color should be changed use the property `border-color`.

```
.border{ border-color:#C79CA5 }
```

If you want to add a box shadow in that color use:



Here you see how a box with a 4 pixel #C79CA5 colored shadow looks like.

```
.boxshadow{ -moz-box-shadow:4px 4px 4px  
4px #C79CA5; -webkit-box-shadow:4px 4px  
4px 4px #C79CA5; box-shadow:4px 4px 4px  
4px #C79CA5 }
```

# Background

The CSS property to change the background color of an element to Hex C79CA5 is called "background". The background property can be set on classes, ids or directly on the HTML element.

```
.background, #background, body{  
background:#C79CA5 }
```

If only the background color should be changed can be used:

```
.background{ background-color:#C79CA5 }
```

This example shows the color as background, it is applied via the CSS property "background".

To optimize and compress your CSS code, you can use our [online CSS compressor and optimizer](#) based on csstidy. If you want to create a linear or radial gradient as background or border, check our [CSS Gradient Generator](#).



Hey! You found this booklet interesting? Support Converting Colors with the new Membership Option!

The pro membership hides all ads, plus gives you double the colors in the color bucket, and more awesome pro features!

**[Learn more, Memberships starting at \\$2.50/m!](#)**

**Follow me  
on Twitter!**

@ConvertingColor