

# Converting Colors

Hex(C79F9D)

Have a look what the booklet for  
Hex(C79F9D) contains.

<b>Hex(C79F9D)</b> .....	3
<i><b>Conversions</b></i> .....	4
<i><b>Details</b></i> .....	6
<i><b>Harmonies</b></i> .....	11
<i><b>Previews</b></i> .....	23
<i><b>Color Blindness Simulation</b></i> .....	26
<i><b>CSS Examples</b></i> .....	29

# **Color**

**Hex(C79F9D)**

# Conversions

## Conversions Part 1

<b>Format</b>	<b>Color</b>
Hex	C79F9D
RGB	199, 159, 157
RGB Percent	78%, 62%, 62%
CMY	0.2196, 0.3765, 0.3843
CMYK	0.00, 0.20, 0.21, 0.22
HSL	3°, 27%, 70%
HSV	3°, 21%, 78%
XYZ	42.0371, 39.3727, 37.2824
YIQ	170.7320, 24.4820, 7.8580

# Conversions

## Conversions Part 2

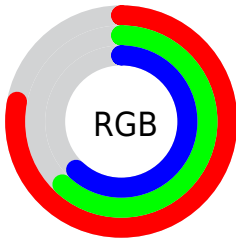
Format	Color
<a href="#">RYB</a>	<a href="#">199, 159, 157</a>
Decimal	<a href="#">13082525</a>
CIELab	<a href="#">69.02, 14.48, 6.67</a>
CIELCh	<a href="#">69, 15.944, 24.720</a>
Yxy	<a href="#">39.3727, 0.3542, 0.3317</a>
Android (android.graphics.Color)	<a href="#">4291272605</a> ( <a href="#">0xFFC79F9D</a> )
YUV	<a href="#">170.7320, -6.7699, 24.7910</a>
Hunter-Lab	<a href="#">62.7477, 9.7757, 8.6954</a>

# Details

The Hex color **C79F9D** is a light color, and the websafe version is hex **CC9999**. A complement of this color would be **9DC5C7**, and the grayscale version is **ABABAB**.

A 20% lighter version of the original color is **FFD6D4**, and **906B6A** is the 20% darker color. If you saturate the color by 10%, you get **C78C89**, and if you desaturate by 10%, it is **C7B2B1**.

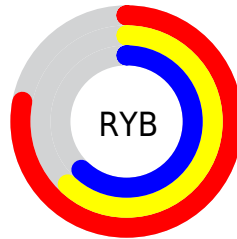
# Distribution



Red (78%)

Green (62%)

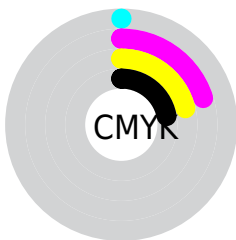
Blue (62%)



Red (78%)

Yellow (62%)

Blue (62%)

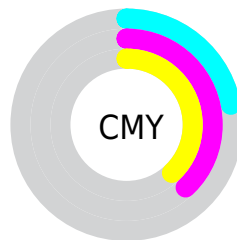


Cyan (0%)

Magenta (20%)

Yellow (21%)

Black (22%)



Cyan (22%)

Magenta (38%)

Yellow (38%)

# Brightness & Saturation Gradients

These gradients show how the Hex color C79F9D changes by changing the brightness by 10 percent. The first figure shows a shift by +10% for each color and the second figure -10%.

Similar to the brightness gradients but the following saturation gradients show a change of the Hex color C79F9D by changing the saturation by 10% instead.



 C79F9D

FFFFFF

 FFD6D4

 FFF2F0

 C79F9D

 AB8583

 906B6A

 765352

 5D3C3B

 452625

 2D1110

 160000

 000000

 C79F9D

 C79F9D

 C78C89

 C7B2B1

 C77975

 C7C5C5

 C76661

 C7D8D9

 C7534D

 C7EBED

 C7403A

 C7FEFF

 C72D26

 C7FFFF

 C71A12

 C70900

# Harmonies

## Analogous

The Analogous color harmony consists of three colors that are next to each other on the color wheel.



C49FAC



C79F9D



C2A291

# Triad

The Triadic color harmony groups three colors that are evenly spaced from another and form a triangle on the color wheel.



C79F9D



96AF97



95AAC5

# Complementary

The Complementary color scheme is a pair of colors which are on the opposite of each other on the color wheel.



C79F9D



9DC5C7

# Split Complementary

Split-complementary colors differ from the complementary color scheme. The scheme consists of three colors, the original color and two neighbors of the complement color.



87AEBF



C79F9D



89B1A5

# Square

The Square scheme is like the rectangle color scheme, but the four colors are evenly spaced on the color wheel.



C79F9D



A7AB8E



82B1B4



A8A6C3

# Rectangle

The Rectangle color scheme consists of four colors that form a rectangle on the color wheel.



C79F9D



BBA58D



82B1B4



90ACC4



# Sweetspot

The Sweet Spot groups the original color and five complimentary colors.



C79F9D



FFF0F0



C79DC6



807777



000000



808080



# Same Dimension

The Same Dimension uses a secret algorithm to generate beautiful new colors.



C79F9D



FFC2BF



C7B39D



635A5A



A30800



240200



# Inverse Universe

The Inverse Universe completely reimagines the original color for something new.



9DC5C7



BFFCFF



9DB1C7



5A6363



009BA3

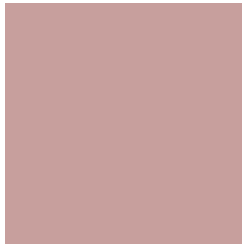


002224



# Previews

## White Background



This preview shows how the Hex color C79F9D looks on a white background.

## Color Contrast Check

Large Text (above 18pt) WCAG AA × Fail

Any Text WCAG AA × Fail

Large Text (above 18pt) WCAG AAA × Fail

Any Text WCAG AAA × Fail

# Black Background



This preview shows how the Hex color C79F9D looks on a black background.

## Color Contrast Check

Large Text (above 18pt) WCAG AA ✓ Pass

Any Text WCAG AA ✓ Pass

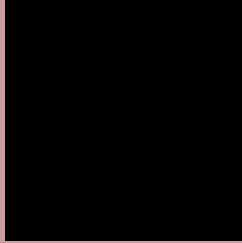
Large Text (above 18pt) WCAG AAA ✓ Pass

Any Text WCAG AAA ✓ Pass

If you want to check with other color combinations, try the [Color Contrast Checker](#).



## Hex C79F9D Background



This preview shows how black text looks on a background with the Hex color C79F9D.



This preview shows how white text looks on a background with the Hex color C79F9D.

# Color Blindness Simulation

Color vision deficiency is a very complex topic, and I could not describe the different causes any better than Wikipedia does, so if you want to learn more, you should check out their [article about color blindness](#).

## Dichromacy





**Tritanopia**  
C89DA9

# Trichromacy



**Original Color**  
C79F9D

**Protanomaly**  
B6A5A0

**Deuteranomaly**  
C1A29C

**Tritanomaly**  
C89EA5

# Monochromacy



**Original Color**  
C79F9D

**Achromatopsia**  
ABABAB

**Achromatomaly**  
B5A7A6

# CSS Examples

## Text

The CSS property to change the color of the text to Hex C79F9D is called "color". The color property can be set on classes, ids or directly on the HTML element.

This example shows how text in the color #C79F9D looks like.

```
.text, #text, p{  
    color:#C79F9D  
}
```

If you want to add a text shadow in that color use the text-shadow property, you can generate a text shadow directly with our [CSS Text Shadow Generator](#).

Here you see how black text with a 4 pixel #C79F9D colored shadow looks like.

```
.shadow{ text-shadow: 4px 4px 2px #C79F9D
}
```

## Border

The CSS property to change the border of an element to Hex C79F9D is called "border". The border property can be set on classes, ids or directly on the HTML element.

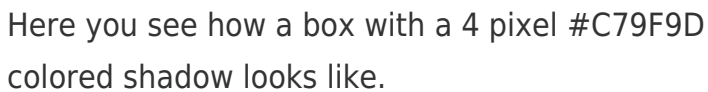
This example shows the color as border, it can be applied via the CSS property "border" or "border-color".

```
.border, #border, table{ border:4px solid
#C79F9D }
```

If only the border color should be changed use the property `border-color`.

```
.border{ border-color:#C79F9D }
```

If you want to add a box shadow in that color use:



Here you see how a box with a 4 pixel #C79F9D colored shadow looks like.

```
.boxshadow{ -moz-box-shadow:4px 4px 4px  
4px #C79F9D; -webkit-box-shadow:4px 4px  
4px 4px #C79F9D; box-shadow:4px 4px 4px  
4px #C79F9D }
```

# Background

The CSS property to change the background color of an element to Hex C79F9D is called "background". The background property can be set on classes, ids or directly on the HTML element.

```
.background, #background, body{  
background:#C79F9D }
```

If only the background color should be changed can be used:

```
.background{ background-color:#C79F9D }
```

This example shows the color as background, it is applied via the CSS property "background".

To optimize and compress your CSS code, you can use our [online CSS compressor and optimizer](#) based on csstidy. If you want to create a linear or radial gradient as background or border, check our [CSS Gradient Generator](#).



Hey! You found this booklet interesting? Support Converting Colors with the new Membership Option!

The pro membership hides all ads, plus gives you double the colors in the color bucket, and more awesome pro features!

**[Learn more, Memberships starting at \\$2.50/m!](#)**

**Follow me  
on Twitter!**

@ConvertingColor