

Converting Colors

Hex(C79FA4)

Have a look what the booklet for
Hex(C79FA4) contains.

Hex(C79FA4)	3
<i>Conversions</i>	4
<i>Details</i>	6
<i>Harmonies</i>	11
<i>Previews</i>	23
<i>Color Blindness Simulation</i>	26
<i>CSS Examples</i>	29

Color

Hex(C79FA4)

Conversions

Conversions Part 1

Format	Color
Hex	C79FA4
RGB	199, 159, 164
RGB Percent	78%, 62%, 64%
CMY	0.2196, 0.3765, 0.3569
CMYK	0.00, 0.20, 0.18, 0.22
HSL	352°, 26%, 70%
HSV	352°, 20%, 78%
XYZ	42.6522, 39.6187, 40.5211
YIQ	171.5300, 22.2350, 10.0350

Conversions

Conversions Part 2

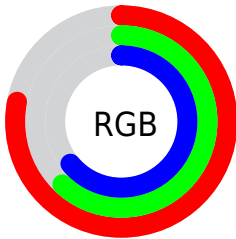
Format	Color
RYB	199, 159, 164
Decimal	13082532
CIELab	69.20, 15.57, 3.03
CIELCh	69, 15.863, 11.021
Yxy	39.6187, 0.3474, 0.3226
Android (android.graphics.Color)	4291272612 (0xFFC79FA4)
YUV	171.5300, -3.7123, 24.0912
Hunter-Lab	62.9434, 10.8055, 5.8912

Details

The Hex color **C79FA4** is a light color, and the websafe version is hex **CC9999**. A complement of this color would be **9FC7C2**, and the grayscale version is **ACACAC**.

A 20% lighter version of the original color is **FFD6DB**, and **916B70** is the 20% darker color. If you saturate the color by 10%, you get **C78B93**, and if you desaturate by 10%, it is **C7B3B5**.

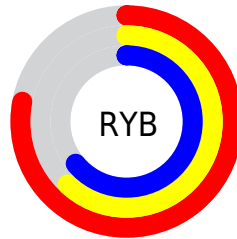
Distribution



Red (78%)

Green (62%)

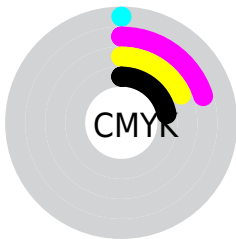
Blue (64%)



Red (78%)

Yellow (62%)

Blue (64%)

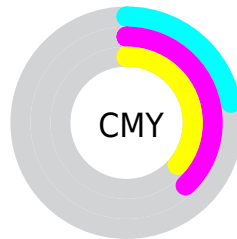


Cyan (0%)

Magenta (20%)

Yellow (18%)

Black (22%)



Cyan (22%)

Magenta (38%)

Yellow (36%)

Brightness & Saturation Gradients

These gradients show how the Hex color C79FA4 changes by changing the brightness by 10 percent. The first figure shows a shift by +10% for each color and the second figure -10%.

Similar to the brightness gradients but the following saturation gradients show a change of the Hex color C79FA4 by changing the saturation by 10% instead.



C79FA4



C79FA4

FFFFFF



AB858A



FFD6DB



916B70



FFF2F7



765358



5D3C41



45262B



2E1116



190001



000000



C79FA4



C79FA4

 C78B93

 C7B3B5

 C77781

 C7C7C7

 C76370

 C7DBD8

 C74F5E

 C7EFEA

 C73C4D

 C7FFFB

 C7283C

 C7FFFF

 C7142A

 C70019

Harmonies

Analogous

The Analogous color harmony consists of three colors that are next to each other on the color wheel.



C0A0B3



C79FA4



C6A197

Triad

The Triadic color harmony groups three colors that are evenly spaced from another and form a triangle on the color wheel.



C79FA4



9EAE93



8FADC4

Complementary

The Complementary color scheme is a pair of colors which are on the opposite of each other on the color wheel.



C79FA4



9FC7C2

Split Complementary

Split-complementary colors differ from the complementary color scheme. The scheme consists of three colors, the original color and two neighbors of the complement color.



84B0BB



C79FA4



8FB19F

Square

The Square scheme is like the rectangle color scheme, but the four colors are evenly spaced on the color wheel.



C79FA4



AFAA8D



85B1AE



A0A8C5

Rectangle

The Rectangle color scheme consists of four colors that form a rectangle on the color wheel.



C79FA4



C0A390



85B1AE



8AAEC2

Sweetspot

The Sweet Spot groups the original color and five complimentary colors.



C79FA4



FFF0F2



C29FC7



807778



000000



808080

Same Dimension

The Same Dimension uses a secret algorithm to generate beautiful new colors.



C79FA4



FFC2C9



C7AE9F



635A5B



A30014



240004

Inverse Universe

The Inverse Universe completely reimagines the original color for something new.



C79FA4



FFC2C9



9FB8C7



635A5B



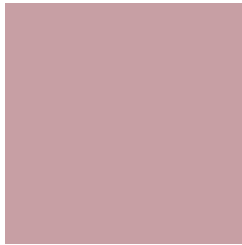
A30014



240004

Previews

White Background



This preview shows how the Hex color C79FA4 looks on a white background.

Color Contrast Check

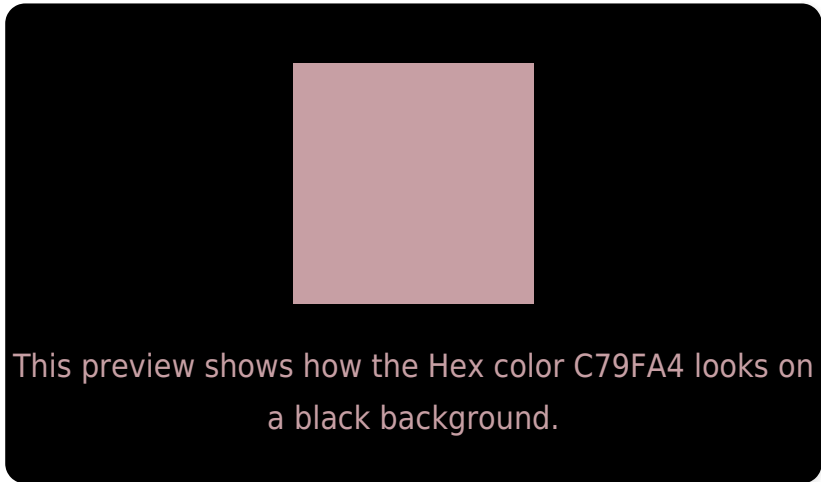
Large Text (above 18pt) WCAG AA × Fail

Any Text WCAG AA × Fail

Large Text (above 18pt) WCAG AAA × Fail

Any Text WCAG AAA × Fail

Black Background



Color Contrast Check

Large Text (above 18pt) WCAG AA ✓ Pass

Any Text WCAG AA ✓ Pass

Large Text (above 18pt) WCAG AAA ✓ Pass

Any Text WCAG AAA ✓ Pass

If you want to check with other color combinations, try the [Color Contrast Checker](#).

Hex C79FA4 Background



This preview shows how black text looks on a background with the Hex color C79FA4.

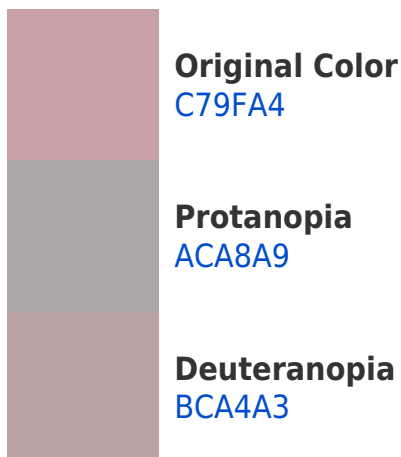


This preview shows how white text looks on a background with the Hex color C79FA4.

Color Blindness Simulation

Color vision deficiency is a very complex topic, and I could not describe the different causes any better than Wikipedia does, so if you want to learn more, you should check out their [article about color blindness](#).

Dichromacy





Tritanopia
C89EAA

Trichromacy



Original Color
C79FA4

Protanomaly
B6A5A7

Deuteranomaly
C0A2A3

Tritanomaly
C89EA8

Monochromacy



Original Color
C79FA4

Achromatopsia
ACACAC

Achromatomaly
B6A7A9

CSS Examples

Text

The CSS property to change the color of the text to Hex C79FA4 is called "color". The color property can be set on classes, ids or directly on the HTML element.

This example shows how text in the color #C79FA4 looks like.

```
.text, #text, p{  
    color:#C79FA4  
}
```

If you want to add a text shadow in that color use the text-shadow property, you can generate a text shadow directly with our [CSS Text Shadow Generator](#).

Here you see how black text with a 4 pixel #C79FA4 colored shadow looks like.

```
.shadow{ text-shadow: 4px 4px 2px #C79FA4
}
```

Border

The CSS property to change the border of an element to Hex C79FA4 is called "border". The border property can be set on classes, ids or directly on the HTML element.

This example shows the color as border, it can be applied via the CSS property "border" or "border-color".

```
.border, #border, table{ border:4px solid
#C79FA4 }
```

If only the border color should be changed use the property `border-color`.

```
.border{ border-color:#C79FA4 }
```

If you want to add a box shadow in that color use:

Here you see how a box with a 4 pixel #C79FA4 colored shadow looks like.

```
.boxshadow{ -moz-box-shadow:4px 4px 4px  
4px #C79FA4; -webkit-box-shadow:4px 4px  
4px 4px #C79FA4; box-shadow:4px 4px 4px  
4px #C79FA4 }
```

Background

The CSS property to change the background color of an element to Hex C79FA4 is called "background". The background property can be set on classes, ids or directly on the HTML element.

```
.background, #background, body{  
background:#C79FA4 }
```

If only the background color should be changed can be used:

```
.background{ background-color:#C79FA4 }
```

This example shows the color as background, it is applied via the CSS property "background".

To optimize and compress your CSS code, you can use our [online CSS compressor and optimizer](#) based on csstidy. If you want to create a linear or radial gradient as background or border, check our [CSS Gradient Generator](#).

Hey! You found this booklet interesting? Support Converting Colors with the new Membership Option!

The pro membership hides all ads, plus gives you double the colors in the color bucket, and more awesome pro features!

[Learn more, Memberships starting at \\$2.50/m!](#)

**Follow me
on Twitter!**

@ConvertingColor