

Converting Colors

Hex(C7A19E)

Have a look what the booklet for
Hex(C7A19E) contains.

Hex(C7A19E)	3
<i>Conversions</i>	4
<i>Details</i>	6
<i>Harmonies</i>	11
<i>Previews</i>	23
<i>Color Blindness Simulation</i>	26
<i>CSS Examples</i>	29

Color

Hex(C7A19E)

Conversions

Conversions Part 1

Format	Color
Hex	C7A19E
RGB	199, 161, 158
RGB Percent	78%, 63%, 62%
CMY	0.2196, 0.3686, 0.3804
CMYK	0.00, 0.19, 0.21, 0.22
HSL	4°, 27%, 70%
HSV	4°, 21%, 78%
XYZ	42.4696, 40.1005, 37.8495
YIQ	172.0200, 23.6110, 7.1230

Conversions

Conversions Part 2

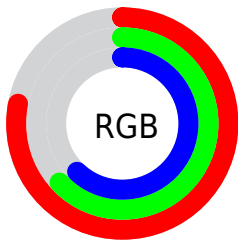
Format	Color
RYB	199, 161, 158
Decimal	13083038
CIELab	69.54, 13.54, 6.86
CIELCh	70, 15.179, 26.865
Yxy	40.1005, 0.3527, 0.3330
Android (android.graphics.Color)	4291273118 (0xFFC7A19E)
YUV	172.0200, -6.9119, 23.6615
Hunter-Lab	63.3249, 8.8945, 8.8896

Details

The Hex color **C7A19E** is a light color, and the websafe version is hex **CC9999**. A complement of this color would be **9EC4C7**, and the grayscale version is **ACACAC**.

A 20% lighter version of the original color is **FFD8D5**, and **906D6B** is the 20% darker color. If you saturate the color by 10%, you get **C78F8A**, and if you desaturate by 10%, it is **C7B3B2**.

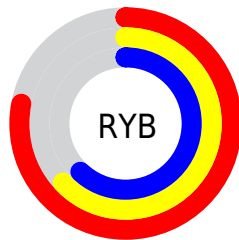
Distribution



Red (78%)

Green (63%)

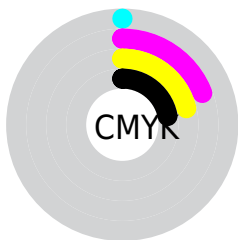
Blue (62%)



Red (78%)

Yellow (63%)

Blue (62%)

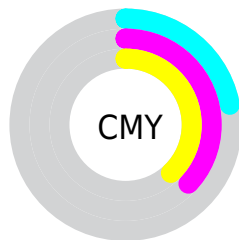


Cyan (0%)

Magenta (19%)

Yellow (21%)

Black (22%)



Cyan (22%)

Magenta (37%)

Yellow (38%)

Brightness & Saturation Gradients

These gradients show how the Hex color C7A19E changes by changing the brightness by 10 percent. The first figure shows a shift by +10% for each color and the second figure -10%.

Similar to the brightness gradients but the following saturation gradients show a change of the Hex color C7A19E by changing the saturation by 10% instead.

 C7A19E

FFFFFF

 FFD8D5

 FFF4F1

 C7A19E

 AB8784

 906D6B

 765553

 5D3E3C

 452726

 2E1311

 180001

 000000

 C7A19E

 C7A19E

 C78F8A

 C7B3B2

 C77C76

 C7C6C6

 C76A62

 C7D8DA

 C7574E

 C7EBEE

 C7453B

 C7FDFF

 C73227

 C7FFFF

 C72013

 C70F00

Harmonies

Analogous

The Analogous color harmony consists of three colors that are next to each other on the color wheel.



C5A0AC



C7A19E



C2A493

Triad

The Triadic color harmony groups three colors that are evenly spaced from another and form a triangle on the color wheel.



C7A19E



98B09A



99ABC5

Complementary

The Complementary color scheme is a pair of colors which are on the opposite of each other on the color wheel.



C7A19E



9EC4C7

Split Complementary

Split-complementary colors differ from the complementary color scheme. The scheme consists of three colors, the original color and two neighbors of the complement color.



8BAFC0



C7A19E



8BB2A8

Square

The Square scheme is like the rectangle color scheme, but the four colors are evenly spaced on the color wheel.



C7A19E



A7AD91



86B2B6



ABA7C2

Rectangle

The Rectangle color scheme consists of four colors that form a rectangle on the color wheel.



C7A19E



BBA78F



86B2B6



94ADC4

Sweetspot

The Sweet Spot groups the original color and five complimentary colors.



C7A19E



FFF1F0



C79EC4



807777



000000



808080

Same Dimension

The Same Dimension uses a secret algorithm to generate beautiful new colors.



C7A19E



FFC4BF



C7B59E



635A5A



A30C00



240300

Inverse Universe

The Inverse Universe completely reimagines the original color for something new.



9EC4C7



BFFAFF



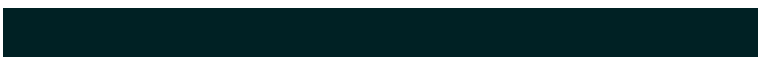
9EB0C7



5A6363



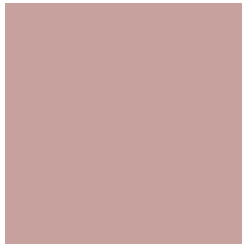
0097A3



002124

Previews

White Background



This preview shows how the Hex color C7A19E looks on a white background.

Color Contrast Check

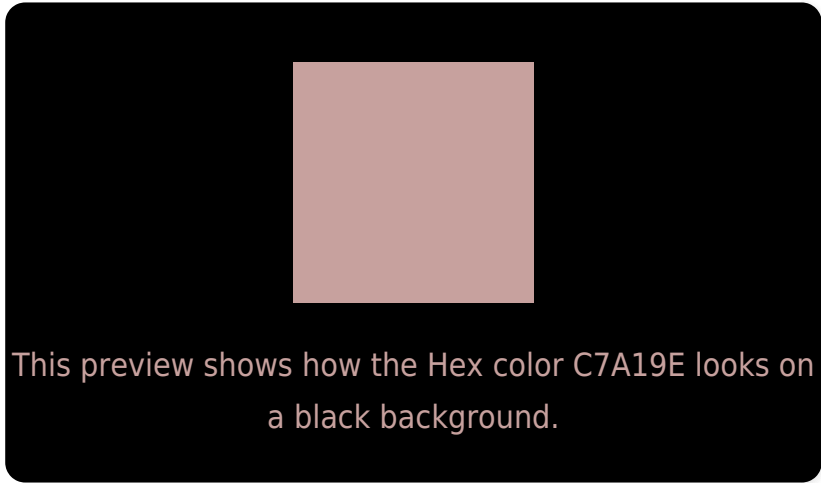
Large Text (above 18pt) WCAG AA × Fail

Any Text WCAG AA × Fail

Large Text (above 18pt) WCAG AAA × Fail

Any Text WCAG AAA × Fail

Black Background



Color Contrast Check

Large Text (above 18pt) WCAG AA ✓ Pass

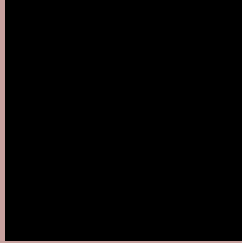
Any Text WCAG AA ✓ Pass

Large Text (above 18pt) WCAG AAA ✓ Pass

Any Text WCAG AAA ✓ Pass

If you want to check with other color combinations, try the [Color Contrast Checker](#).

Hex C7A19E Background



This preview shows how black text looks on a background with the Hex color C7A19E.



This preview shows how white text looks on a background with the Hex color C7A19E.

Color Blindness Simulation

Color vision deficiency is a very complex topic, and I could not describe the different causes any better than Wikipedia does, so if you want to learn more, you should check out their [article about color blindness](#).

Dichromacy



Original Color
C7A19E

Protanopia
AFA9A3

Deuteranopia
BFA49D



Tritanopia
C99FAB

Trichromacy



Original Color
C7A19E

Protanomaly
B8A6A1

Deuteranomaly
C2A39D

Tritanomaly
C8A0A6

Monochromacy



Original Color
C7A19E

Achromatopsia
ACACAC

Achromatomaly
B6A8A7

CSS Examples

Text

The CSS property to change the color of the text to Hex C7A19E is called "color". The color property can be set on classes, ids or directly on the HTML element.

This example shows how text in the color #C7A19E looks like.

```
.text, #text, p{  
    color:#C7A19E  
}
```

If you want to add a text shadow in that color use the text-shadow property, you can generate a text shadow directly with our [CSS Text Shadow Generator](#).

Here you see how black text with a 4 pixel #C7A19E colored shadow looks like.

```
.shadow{ text-shadow: 4px 4px 2px #C7A19E
}
```

Border

The CSS property to change the border of an element to Hex C7A19E is called "border". The border property can be set on classes, ids or directly on the HTML element.

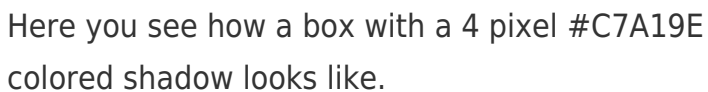
This example shows the color as border, it can be applied via the CSS property "border" or "border-color".

```
.border, #border, table{ border:4px solid
#C7A19E }
```

If only the border color should be changed use the property `border-color`.

```
.border{ border-color:#C7A19E }
```

If you want to add a box shadow in that color use:



Here you see how a box with a 4 pixel #C7A19E colored shadow looks like.

```
.boxshadow{ -moz-box-shadow:4px 4px 4px  
4px #C7A19E; -webkit-box-shadow:4px 4px  
4px 4px #C7A19E; box-shadow:4px 4px 4px  
4px #C7A19E }
```

Background

The CSS property to change the background color of an element to Hex C7A19E is called "background". The background property can be set on classes, ids or directly on the HTML element.

```
.background, #background, body{  
background:#C7A19E }
```

If only the background color should be changed can be used:

```
.background{ background-color:#C7A19E }
```

This example shows the color as background, it is applied via the CSS property "background".

To optimize and compress your CSS code, you can use our [online CSS compressor and optimizer](#) based on csstidy. If you want to create a linear or radial gradient as background or border, check our [CSS Gradient Generator](#).

Hey! You found this booklet interesting? Support Converting Colors with the new Membership Option!

The pro membership hides all ads, plus gives you double the colors in the color bucket, and more awesome pro features!

[Learn more, Memberships starting at \\$2.50/m!](#)

**Follow me
on Twitter!**

@ConvertingColor