

Converting Colors

Hex(C7A1A4)

Have a look what the booklet for
Hex(C7A1A4) contains.

Hex(C7A1A4)	3
<i>Conversions</i>	4
<i>Details</i>	6
<i>Harmonies</i>	11
<i>Previews</i>	23
<i>Color Blindness Simulation</i>	26
<i>CSS Examples</i>	29

Color

Hex(C7A1A4)

Conversions

Conversions Part 1

Format	Color
Hex	C7A1A4
RGB	199, 161, 164
RGB Percent	78%, 63%, 64%
CMY	0.2196, 0.3686, 0.3569
CMYK	0.00, 0.19, 0.18, 0.22
HSL	355°, 25%, 71%
HSV	355°, 19%, 78%
XYZ	42.9989, 40.3122, 40.6367
YIQ	172.7040, 21.6850, 8.9890

Conversions

Conversions Part 2

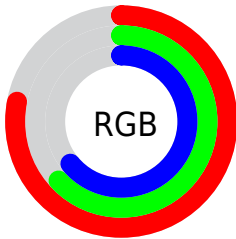
Format	Color
RYB	199, 161, 164
Decimal	13083044
CIELab	69.69, 14.47, 3.75
CIELCh	70, 14.952, 14.517
Yxy	40.3122, 0.3469, 0.3252
Android (android.graphics.Color)	4291273124 (0xFFC7A1A4)
YUV	172.7040, -4.2911, 23.0616
Hunter-Lab	63.4919, 9.7756, 6.4969

Details

The Hex color **C7A1A4** is a light color, and the websafe version is hex **CC9999**. A complement of this color would be **A1C7C4**, and the grayscale version is **ADADAD**.

A 20% lighter version of the original color is **FFD8DB**, and **916D70** is the 20% darker color. If you saturate the color by 10%, you get **C78D92**, and if you desaturate by 10%, it is **C7B5B6**.

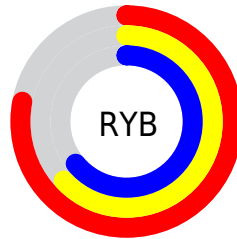
Distribution



Red (78%)

Green (63%)

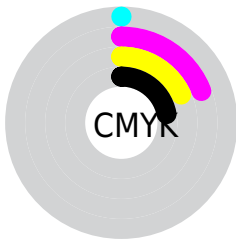
Blue (64%)



Red (78%)

Yellow (63%)

Blue (64%)

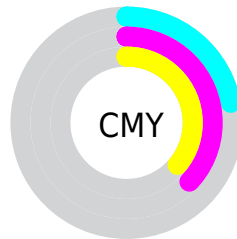


Cyan (0%)

Magenta (19%)

Yellow (18%)

Black (22%)



Cyan (22%)

Magenta (37%)

Yellow (36%)

Brightness & Saturation Gradients

These gradients show how the Hex color C7A1A4 changes by changing the brightness by 10 percent. The first figure shows a shift by +10% for each color and the second figure -10%.

Similar to the brightness gradients but the following saturation gradients show a change of the Hex color C7A1A4 by changing the saturation by 10% instead.



C7A1A4



C7A1A4

FFFFFF



AB878A



FFD8DB



916D70



FFF4F7



775558



5D3D41



45272B



2E1316



1A0001



000000



C7A1A4



C7A1A4

 C78D92

 C7B5B6

 C7797F

 C7C9C9

 C7656D

 C7DDDB

 C7515B

 C7F1ED

 C73E48

 C7FFFF

 C72A36

 C71624

 C70211

 C70010

Harmonies

Analogous

The Analogous color harmony consists of three colors that are next to each other on the color wheel.



C1A2B2



C7A1A4



C5A398

Triad

The Triadic color harmony groups three colors that are evenly spaced from another and form a triangle on the color wheel.



C7A1A4



9FAF97



93AEC4

Complementary

The Complementary color scheme is a pair of colors which are on the opposite of each other on the color wheel.



C7A1A4



A1C7C4

Split Complementary

Split-complementary colors differ from the complementary color scheme. The scheme consists of three colors, the original color and two neighbors of the complement color.



89B1BD



C7A1A4



90B2A3

Square

The Square scheme is like the rectangle color scheme, but the four colors are evenly spaced on the color wheel.



C7A1A4



AEAB90



88B2B0



A4A9C4

Rectangle

The Rectangle color scheme consists of four colors that form a rectangle on the color wheel.



C7A1A4



BFA692



88B2B0



8FAFC2

Sweetspot

The Sweet Spot groups the original color and five complimentary colors.



C7A1A4



FFF0F1



C4A1C7



807777



000000



808080

Same Dimension

The Same Dimension uses a secret algorithm to generate beautiful new colors.



C7A1A4



FFC4C9



C7B1A1



635A5A



A3000D



240003

Inverse Universe

The Inverse Universe completely reimagines the original color for something new.



C7A1A4



FFC4C9



A1B7C7



635A5A



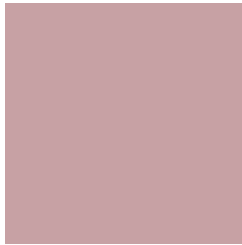
A3000D



240003

Previews

White Background



This preview shows how the Hex color C7A1A4 looks on a white background.

Color Contrast Check

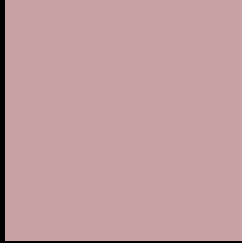
Large Text (above 18pt) WCAG AA × Fail

Any Text WCAG AA × Fail

Large Text (above 18pt) WCAG AAA × Fail

Any Text WCAG AAA × Fail

Black Background



This preview shows how the Hex color C7A1A4 looks on a black background.

Color Contrast Check

Large Text (above 18pt) WCAG AA ✓ Pass

Any Text WCAG AA ✓ Pass

Large Text (above 18pt) WCAG AAA ✓ Pass

Any Text WCAG AAA ✓ Pass

If you want to check with other color combinations, try the [Color Contrast Checker](#).

Hex C7A1A4 Background



This preview shows how black text looks on a background with the Hex color C7A1A4.

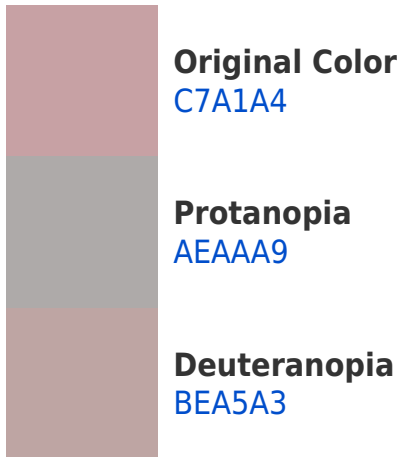


This preview shows how white text looks on a background with the Hex color C7A1A4.

Color Blindness Simulation

Color vision deficiency is a very complex topic, and I could not describe the different causes any better than Wikipedia does, so if you want to learn more, you should check out their [article about color blindness](#).

Dichromacy





Tritanopia
C8A0AC

Trichromacy



Original Color
C7A1A4

Protanomaly
B7A7A7

Deuteranomaly
C1A4A3

Tritanomaly
C8A0A9

Monochromacy



Original Color
C7A1A4

Achromatopsia
ADADAD

Achromatomaly
B6A9AA

CSS Examples

Text

The CSS property to change the color of the text to Hex C7A1A4 is called "color". The color property can be set on classes, ids or directly on the HTML element.

This example shows how text in the color #C7A1A4 looks like.

```
.text, #text, p{  
    color:#C7A1A4  
}
```

If you want to add a text shadow in that color use the text-shadow property, you can generate a text shadow directly with our [CSS Text Shadow Generator](#).

Here you see how black text with a 4 pixel #C7A1A4 colored shadow looks like.

```
.shadow{ text-shadow: 4px 4px 2px #C7A1A4
}
```

Border

The CSS property to change the border of an element to Hex C7A1A4 is called "border". The border property can be set on classes, ids or directly on the HTML element.

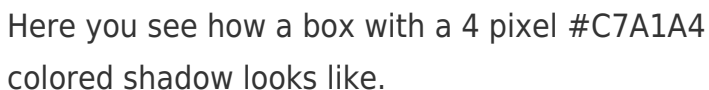
This example shows the color as border, it can be applied via the CSS property "border" or "border-color".

```
.border, #border, table{ border:4px solid
#C7A1A4 }
```

If only the border color should be changed use the property `border-color`.

```
.border{ border-color:#C7A1A4 }
```

If you want to add a box shadow in that color use:



Here you see how a box with a 4 pixel #C7A1A4 colored shadow looks like.

```
.boxshadow{ -moz-box-shadow:4px 4px 4px  
4px #C7A1A4; -webkit-box-shadow:4px 4px  
4px 4px #C7A1A4; box-shadow:4px 4px 4px  
4px #C7A1A4 }
```

Background

The CSS property to change the background color of an element to Hex C7A1A4 is called "background". The background property can be set on classes, ids or directly on the HTML element.

```
.background, #background, body{  
background:#C7A1A4 }
```

If only the background color should be changed can be used:

```
.background{ background-color:#C7A1A4 }
```

This example shows the color as background, it is applied via the CSS property "background".

To optimize and compress your CSS code, you can use our [online CSS compressor and optimizer](#) based on csstidy. If you want to create a linear or radial gradient as background or border, check our [CSS Gradient Generator](#).

Hey! You found this booklet interesting? Support Converting Colors with the new Membership Option!

The pro membership hides all ads, plus gives you double the colors in the color bucket, and more awesome pro features!

[Learn more, Memberships starting at \\$2.50/m!](#)

**Follow me
on Twitter!**

@ConvertingColor