

# Converting Colors

Hex(C7A29C)

Have a look what the booklet for  
Hex(C7A29C) contains.

<b>Hex(C7A29C)</b> .....	3
<b><i>Conversions</i></b> .....	4
<b><i>Details</i></b> .....	6
<b><i>Harmonies</i></b> .....	11
<b><i>Previews</i></b> .....	23
<b><i>Color Blindness Simulation</i></b> .....	26
<b><i>CSS Examples</i></b> .....	29

**Color**

**Hex(C7A29C)**

# Conversions

## Conversions Part 1

Format	Color
Hex	C7A29C
RGB	199, 162, 156
RGB Percent	78%, 64%, 61%
CMY	0.2196, 0.3647, 0.3882
CMYK	0.00, 0.19, 0.22, 0.22
HSL	8°, 28%, 70%
HSV	8°, 22%, 78%
XYZ	42.4743, 40.3831, 37.0086
YIQ	172.3790, 23.9780, 5.9780

# Conversions

## Conversions Part 2

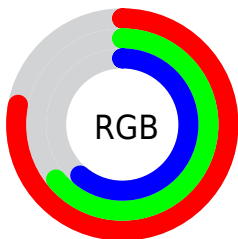
Format	Color
<a href="#">RYB</a>	<a href="#">199, 163, 156</a>
Decimal	<a href="#">13083292</a>
CIELab	<a href="#">69.74, 12.69, 8.25</a>
CIElCh	<a href="#">70, 15.139, 33.041</a>
Yxy	<a href="#">40.3831, 0.3543, 0.3369</a>
Android (android.graphics.Color)	<a href="#">4291273372</a> ( <a href="#">0xFFC7A29C</a> )
YUV	<a href="#">172.3790, -8.0748, 23.3466</a>
Hunter-Lab	<a href="#">63.5477, 8.0982, 9.9544</a>

# Details

The Hex color **C7A29C** is a light color, and the websafe version is hex **CC9999**. A complement of this color would be **9CC1C7**, and the grayscale version is **ACACAC**.

A 20% lighter version of the original color is **FFD9D2**, and **906E69** is the 20% darker color. If you saturate the color by 10%, you get **C79188**, and if you desaturate by 10%, it is **C7B3B0**.

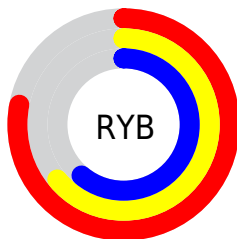
# Distribution



Red (78%)

Green (64%)

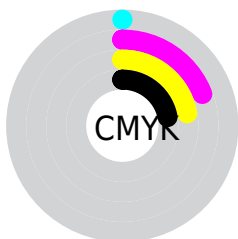
Blue (61%)



Red (78%)

Yellow (64%)

Blue (61%)

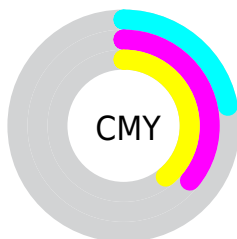


Cyan (0%)

Magenta (19%)

Yellow (22%)

Black (22%)



Cyan (22%)

Magenta (36%)

Yellow (39%)

# Brightness & Saturation Gradients

These gradients show how the Hex color C7A29C changes by changing the brightness by 10 percent. The first figure shows a shift by +10% for each color and the second figure -10%.

Similar to the brightness gradients but the following saturation gradients show a change of the Hex color C7A29C by changing the saturation by 10% instead.



 C7A29C

 C7A29C

FFFFFF

 AB8882

 FFD9D2

 906E69

 FFF5EF


 765651

 5D3E3A

 452824

 2E140F

 180001

 000000

 C7A29C

 C7A29C

 C79188

 C7B3B0

 C78074

 C7C4C4

 C76F60

 C7D5D8

 C75E4C

 C7E6EC

 C74C39

 C7F8FF

 C73B25

 C7FFFF

 C72A11

 C71C00

# Harmonies

## Analogous

The Analogous color harmony consists of three colors that are next to each other on the color wheel.



C6A1A9



C7A29C



C0A592

# Triad

The Triadic color harmony groups three colors that are evenly spaced from another and form a triangle on the color wheel.



C7A29C



95B19E



9DABC6

# Complementary

The Complementary color scheme is a pair of colors which are on the opposite of each other on the color wheel.



C7A29C



9CC1C7

# Split Complementary

Split-complementary colors differ from the complementary color scheme. The scheme consists of three colors, the original color and two neighbors of the complement color.



8EAFC2



C7A29C



8AB2AB

# Square

The Square scheme is like the rectangle color scheme, but the four colors are evenly spaced on the color wheel.



C7A29C



A5AE93



87B2B9



AFA6C1

# Rectangle

The Rectangle color scheme consists of four colors that form a rectangle on the color wheel.



C7A29C



B9A88F



87B2B9



97ADC5



# Sweetspot

The Sweet Spot groups the original color and five complimentary colors.



C7A29C



FFF2F0



C79CC1



807877



000000



808080



# Same Dimension

The Same Dimension uses a secret algorithm to generate beautiful new colors.



C7A29C



FFC6BD



C7B79C



635B5A



A31700



240500



# Inverse Universe

The Inverse Universe completely reimagines the original color for something new.



9CC1C7



BDF6FF



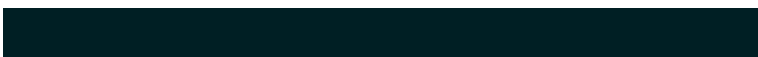
9CACC7



5A6263



008CA3

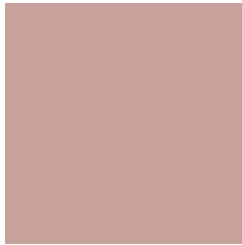


001F24



# Previews

## White Background



This preview shows how the Hex color C7A29C looks on a white background.

## Color Contrast Check

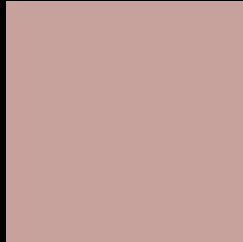
Large Text (above 18pt) WCAG AA × Fail

Any Text WCAG AA × Fail

Large Text (above 18pt) WCAG AAA × Fail

Any Text WCAG AAA × Fail

# Black Background



This preview shows how the Hex color C7A29C looks on a black background.

## Color Contrast Check

Large Text (above 18pt) WCAG AA ✓ Pass

Any Text WCAG AA ✓ Pass

Large Text (above 18pt) WCAG AAA ✓ Pass

Any Text WCAG AAA ✓ Pass

If you want to check with other color combinations, try the [Color Contrast Checker](#).



## Hex C7A29C Background



This preview shows how black text looks on a background with the Hex color C7A29C.

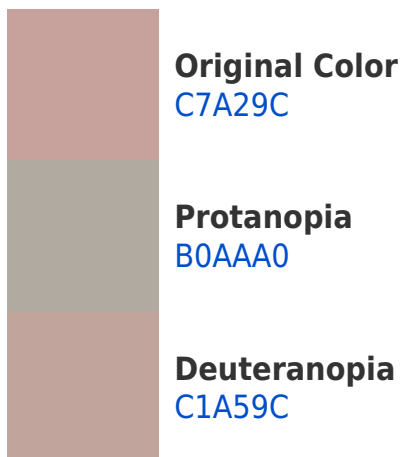


This preview shows how white text looks on a background with the Hex color C7A29C.

# Color Blindness Simulation

Color vision deficiency is a very complex topic, and I could not describe the different causes any better than Wikipedia does, so if you want to learn more, you should check out their [article about color blindness](#).

## Dichromacy





**Tritanopia**  
C9A0AC

# Trichromacy



**Original Color**  
C7A29C

**Protanomaly**  
B8A79F

**Deuteranomaly**  
C3A49C

**Tritanomaly**  
C8A1A6

# Monochromacy



**Original Color**  
C7A29C

**Achromatopsia**  
ACACAC

**Achromatomaly**  
B6A8A6

# CSS Examples

## Text

The CSS property to change the color of the text to Hex C7A29C is called "color". The color property can be set on classes, ids or directly on the HTML element.

This example shows how text in the color #C7A29C looks like.

```
.text, #text, p{  
    color:#C7A29C  
}
```

If you want to add a text shadow in that color use the text-shadow property, you can generate a text shadow directly with our [CSS Text Shadow Generator](#).

Here you see how black text with a 4 pixel #C7A29C colored shadow looks like.

```
.shadow{ text-shadow: 4px 4px 2px #C7A29C
}
```

## Border

The CSS property to change the border of an element to Hex C7A29C is called "border". The border property can be set on classes, ids or directly on the HTML element.

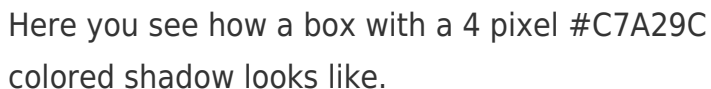
This example shows the color as border, it can be applied via the CSS property "border" or "border-color".

```
.border, #border, table{ border:4px solid
#C7A29C }
```

If only the border color should be changed use the property `border-color`.

```
.border{ border-color:#C7A29C }
```

If you want to add a box shadow in that color use:



Here you see how a box with a 4 pixel #C7A29C colored shadow looks like.

```
.boxshadow{ -moz-box-shadow:4px 4px 4px  
4px #C7A29C; -webkit-box-shadow:4px 4px  
4px 4px #C7A29C; box-shadow:4px 4px 4px  
4px #C7A29C }
```

# Background

The CSS property to change the background color of an element to Hex C7A29C is called "background". The background property can be set on classes, ids or directly on the HTML element.

```
.background, #background, body{  
background:#C7A29C }
```

If only the background color should be changed can be used:

```
.background{ background-color:#C7A29C }
```

This example shows the color as background, it is applied via the CSS property "background".

To optimize and compress your CSS code, you can use our [online CSS compressor and optimizer](#) based on csstidy. If you want to create a linear or radial gradient as background or border, check our [CSS Gradient Generator](#).



Hey! You found this booklet interesting? Support Converting Colors with the new Membership Option!

The pro membership hides all ads, plus gives you double the colors in the color bucket, and more awesome pro features!

**[Learn more, Memberships starting at \\$2.50/m!](#)**

**Follow me  
on Twitter!**

@ConvertingColor