

Converting Colors

Hex(C7A2A4)

Have a look what the booklet for
Hex(C7A2A4) contains.

Hex(C7A2A4)	3
<i>Conversions</i>	4
<i>Details</i>	6
<i>Harmonies</i>	11
<i>Previews</i>	23
<i>Color Blindness Simulation</i>	26
<i>CSS Examples</i>	29

Color

Hex(C7A2A4)

Conversions

Conversions Part 1

Format	Color
Hex	C7A2A4
RGB	199, 162, 164
RGB Percent	78%, 64%, 64%
CMY	0.2196, 0.3647, 0.3569
CMYK	0.00, 0.19, 0.18, 0.22
HSL	357°, 25%, 71%
HSV	357°, 19%, 78%
XYZ	43.1744, 40.6631, 40.6952
YIQ	173.2910, 21.4100, 8.4660

Conversions

Conversions Part 2

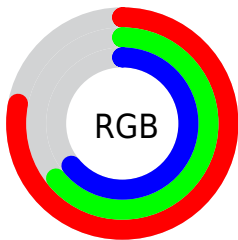
Format	Color
R_{YB}	199, 162, 164
Decimal	13083300
CIE _{Lab}	69.94, 13.93, 4.11
CIE _{LCh}	70, 14.520, 16.428
Yxy	40.6631, 0.3467, 0.3265
Android (android.graphics.Color)	4291273380 (0xFFC7A2A4)
YUV	173.2910, -4.5805, 22.5468
Hunter-Lab	63.7676, 9.2614, 6.7997

Details

The Hex color **C7A2A4** is a light color, and the websafe version is hex **CC9999**. A complement of this color would be **A2C7C5**, and the grayscale version is **ADADAD**.

A 20% lighter version of the original color is **FFD9DB**, and **916E70** is the 20% darker color. If you saturate the color by 10%, you get **C78E91**, and if you desaturate by 10%, it is **C7B6B7**.

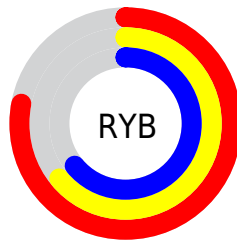
Distribution



Red (78%)

Green (64%)

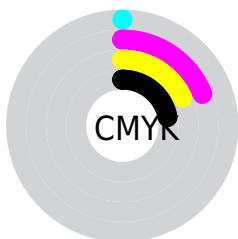
Blue (64%)



Red (78%)

Yellow (64%)

Blue (64%)

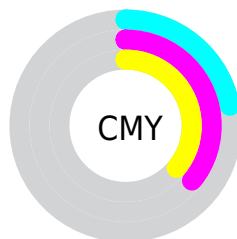


Cyan (0%)

Magenta (19%)

Yellow (18%)

Black (22%)



Cyan (22%)

Magenta (36%)

Yellow (36%)

Brightness & Saturation Gradients

These gradients show how the Hex color C7A2A4 changes by changing the brightness by 10 percent. The first figure shows a shift by +10% for each color and the second figure -10%.

Similar to the brightness gradients but the following saturation gradients show a change of the Hex color C7A2A4 by changing the saturation by 10% instead.



C7A2A4



C7A2A4

FFFFFF



AB888A



FFD9DB



916E70



FFF5F7



775658



5D3E41



45282B



2E1316



1B0001



000000



C7A2A4



C7A2A4

 C78E91

 C7B6B7

 C77A7E

 C7CACA

 C7666C

 C7DEDC

 C75259

 C7F2EF

 C73E46

 C7FFFF

 C72B33

 C71720

 C7030D

 C7000B

Harmonies

Analogous

The Analogous color harmony consists of three colors that are next to each other on the color wheel.



C2A2B1



C7A2A4



C4A498

Triad

The Triadic color harmony groups three colors that are evenly spaced from another and form a triangle on the color wheel.



C7A2A4



9FB098



96AEC4

Complementary

The Complementary color scheme is a pair of colors which are on the opposite of each other on the color wheel.



C7A2A4



A2C7C5

Split Complementary

Split-complementary colors differ from the complementary color scheme. The scheme consists of three colors, the original color and two neighbors of the complement color.



8BB1BD



C7A2A4



91B2A4

Square

The Square scheme is like the rectangle color scheme, but the four colors are evenly spaced on the color wheel.



C7A2A4



AEAC92



89B3B2



A6AAC4

Rectangle

The Rectangle color scheme consists of four colors that form a rectangle on the color wheel.



C7A2A4



BFA793



89B3B2



91AFC3

Sweetspot

The Sweet Spot groups the original color and five complimentary colors.



C7A2A4



FFF0F1



C5A2C7



807777



000000



808080

Same Dimension

The Same Dimension uses a secret algorithm to generate beautiful new colors.



C7A2A4



FFC7CA



C7B2A2



635A5A



A30009



240002

Inverse Universe

The Inverse Universe completely reimagines the original color for something new.



C7A2A4



FFC7CA



A2B7C7



635A5A



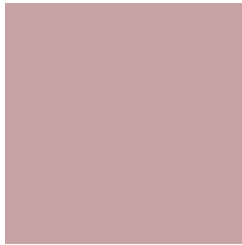
A30009



240002

Previews

White Background



This preview shows how the Hex color C7A2A4 looks on a white background.

Color Contrast Check

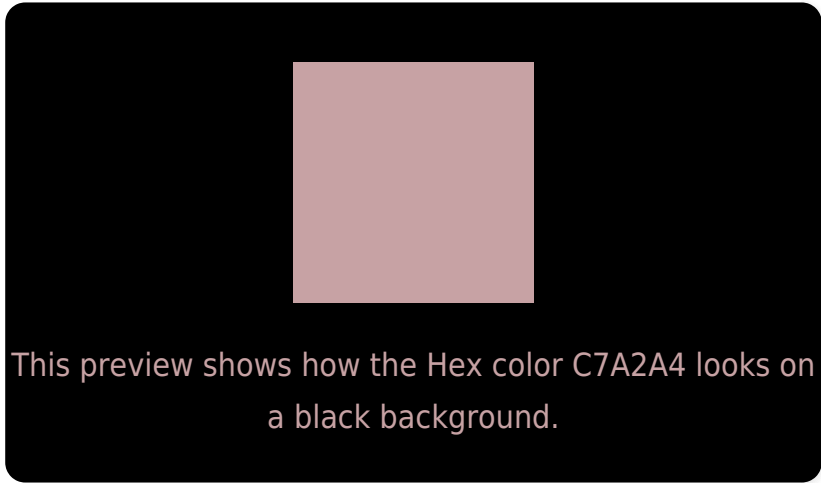
Large Text (above 18pt) WCAG AA × Fail

Any Text WCAG AA × Fail

Large Text (above 18pt) WCAG AAA × Fail

Any Text WCAG AAA × Fail

Black Background



Color Contrast Check

Large Text (above 18pt) WCAG AA ✓ Pass

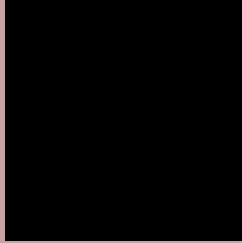
Any Text WCAG AA ✓ Pass

Large Text (above 18pt) WCAG AAA ✓ Pass

Any Text WCAG AAA ✓ Pass

If you want to check with other color combinations, try the [Color Contrast Checker](#).

Hex C7A2A4 Background



This preview shows how black text looks on a background with the Hex color C7A2A4.

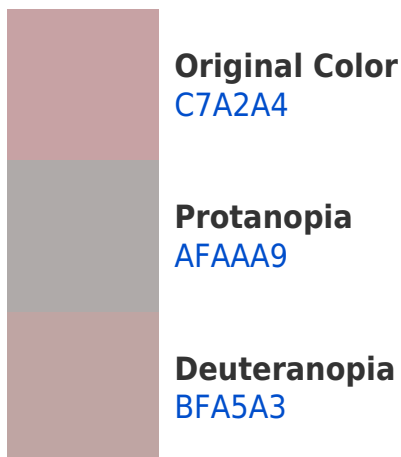


This preview shows how white text looks on a background with the Hex color C7A2A4.

Color Blindness Simulation

Color vision deficiency is a very complex topic, and I could not describe the different causes any better than Wikipedia does, so if you want to learn more, you should check out their [article about color blindness](#).

Dichromacy





Tritanopia
C8A1AD

Trichromacy



Original Color
C7A2A4

Protanomaly
B8A7A7

Deuteranomaly
C2A4A3

Tritanomaly
C8A1AA

Monochromacy



Original Color
C7A2A4

Achromatopsia
ADADAD

Achromatomaly
B6A9AA

CSS Examples

Text

The CSS property to change the color of the text to Hex C7A2A4 is called "color". The color property can be set on classes, ids or directly on the HTML element.

This example shows how text in the color #C7A2A4 looks like.

```
.text, #text, p{  
    color:#C7A2A4  
}
```

If you want to add a text shadow in that color use the text-shadow property, you can generate a text shadow directly with our [CSS Text Shadow Generator](#).

Here you see how black text with a 4 pixel #C7A2A4 colored shadow looks like.

```
.shadow{ text-shadow: 4px 4px 2px #C7A2A4
}
```

Border

The CSS property to change the border of an element to Hex C7A2A4 is called "border". The border property can be set on classes, ids or directly on the HTML element.

This example shows the color as border, it can be applied via the CSS property "border" or "border-color".

```
.border, #border, table{ border:4px solid
#C7A2A4 }
```

If only the border color should be changed use the property `border-color`.

```
.border{ border-color:#C7A2A4 }
```

If you want to add a box shadow in that color use:

Here you see how a box with a 4 pixel #C7A2A4 colored shadow looks like.

```
.boxshadow{ -moz-box-shadow:4px 4px 4px  
4px #C7A2A4; -webkit-box-shadow:4px 4px  
4px 4px #C7A2A4; box-shadow:4px 4px 4px  
4px #C7A2A4 }
```

Background

The CSS property to change the background color of an element to Hex C7A2A4 is called "background". The background property can be set on classes, ids or directly on the HTML element.

```
.background, #background, body{  
background:#C7A2A4 }
```

If only the background color should be changed can be used:

```
.background{ background-color:#C7A2A4 }
```

This example shows the color as background, it is applied via the CSS property "background".

To optimize and compress your CSS code, you can use our [online CSS compressor and optimizer](#) based on csstidy. If you want to create a linear or radial gradient as background or border, check our [CSS Gradient Generator](#).

Hey! You found this booklet interesting? Support Converting Colors with the new Membership Option!

The pro membership hides all ads, plus gives you double the colors in the color bucket, and more awesome pro features!

[Learn more, Memberships starting at \\$2.50/m!](#)

**Follow me
on Twitter!**

@ConvertingColor