

Converting Colors

Hex(C7A3A0)

Have a look what the booklet for
Hex(C7A3A0) contains.

Hex(C7A3A0)	3
<i>Conversions</i>	4
<i>Details</i>	6
<i>Harmonies</i>	11
<i>Previews</i>	23
<i>Color Blindness Simulation</i>	26
<i>CSS Examples</i>	29

Color

Hex(C7A3A0)

Conversions

Conversions Part 1

Format	Color
Hex	C7A3A0
RGB	199, 163, 160
RGB Percent	78%, 64%, 63%
CMY	0.2196, 0.3608, 0.3725
CMYK	0.00, 0.18, 0.20, 0.22
HSL	5°, 26%, 70%
HSV	5°, 20%, 78%
XYZ	42.9955, 40.8746, 38.8812
YIQ	173.4220, 22.4190, 6.6990

Conversions

Conversions Part 2

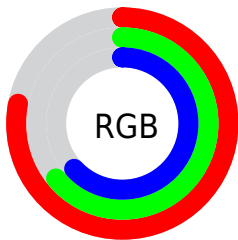
Format	Color
RYB	199, 163, 160
Decimal	13083552
CIELab	70.09, 12.75, 6.54
CIELCh	70, 14.332, 27.132
Yxy	40.8746, 0.3503, 0.3330
Android (android.graphics.Color)	4291273632 (0xFFC7A3A0)
YUV	173.4220, -6.6170, 22.4319
Hunter-Lab	63.9332, 8.1594, 8.6959

Details

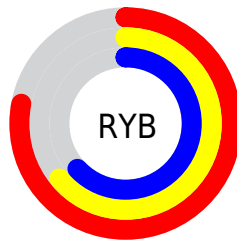
The Hex color **C7A3A0** is a light color, and the websafe version is hex **CC9999**. A complement of this color would be **A0C4C7**, and the grayscale version is **ADADAD**.

A 20% lighter version of the original color is **FFDAD7**, and **916F6D** is the 20% darker color. If you saturate the color by 10%, you get **C7918C**, and if you desaturate by 10%, it is **C7B5B4**.

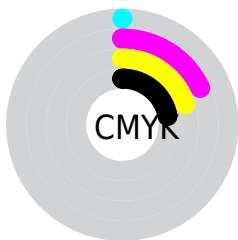
Distribution



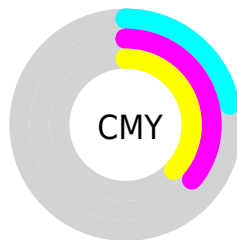
- Red (78%)
- Green (64%)
- Blue (63%)



- Red (78%)
- Yellow (64%)
- Blue (63%)



- Cyan (0%)
- Magenta (18%)
- Yellow (20%)
- Black (22%)



- Cyan (22%)
- Magenta (36%)
- Yellow (37%)

Brightness & Saturation Gradients

These gradients show how the Hex color C7A3A0 changes by changing the brightness by 10 percent. The first figure shows a shift by +10% for each color and the second figure -10%.

Similar to the brightness gradients but the following saturation gradients show a change of the Hex color C7A3A0 by changing the saturation by 10% instead.


 C7A3A0

 C7A3A0

FFFFFF

 AB8986

 FFDAD7

 916F6D

 FFF6F3

 765754

 5D3F3D

 452927

 2E1413

 1A0001

 000000

 C7A3A0

 C7A3A0

 C7918C

 C7B5B4

 C77E78

 C7C8C8

 C76C64

 C7DADC

 C75A50

 C7ECF0

 C7473D

 C7FFFF

 C73529

 C72215

 C71001

 C70F00

Harmonies

Analogous

The Analogous color harmony consists of three colors that are next to each other on the color wheel.



C5A3AD



C7A3A0



C2A696

Triad

The Triadic color harmony groups three colors that are evenly spaced from another and form a triangle on the color wheel.



C7A3A0



9AB19D



9CADC5

Complementary

The Complementary color scheme is a pair of colors which are on the opposite of each other on the color wheel.



C7A3A0



A0C4C7

Split Complementary

Split-complementary colors differ from the complementary color scheme. The scheme consists of three colors, the original color and two neighbors of the complement color.



8FB0C1



C7A3A0



8EB3AA

Square

The Square scheme is like the rectangle color scheme, but the four colors are evenly spaced on the color wheel.



C7A3A0



A9AE94



8AB3B7



ACA8C2

Rectangle

The Rectangle color scheme consists of four colors that form a rectangle on the color wheel.



C7A3A0



BBA992



8AB3B7



97AEC4

Sweetspot

The Sweet Spot groups the original color and five complimentary colors.



C7A3A0



FFF1F0



C7A0C4



807777



000000



808080

Same Dimension

The Same Dimension uses a secret algorithm to generate beautiful new colors.



C7A3A0



FFC7C2



C7B6A0



635A5A



A30D00



240300

Inverse Universe

The Inverse Universe completely reimagines the original color for something new.



A0C4C7



C2FAFF



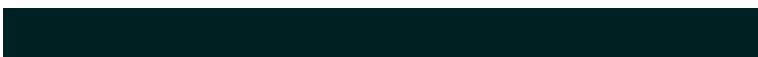
A0B1C7



5A6363



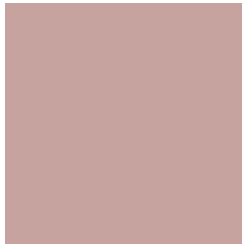
0097A3



002124

Previews

White Background



This preview shows how the Hex color C7A3A0 looks on a white background.

Color Contrast Check

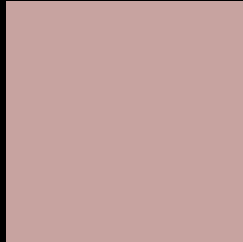
Large Text (above 18pt) WCAG AA × Fail

Any Text WCAG AA × Fail

Large Text (above 18pt) WCAG AAA × Fail

Any Text WCAG AAA × Fail

Black Background



This preview shows how the Hex color C7A3A0 looks on a black background.

Color Contrast Check

Large Text (above 18pt) WCAG AA ✓ Pass

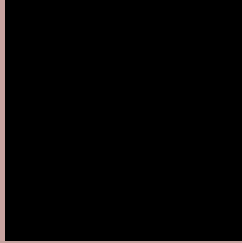
Any Text WCAG AA ✓ Pass

Large Text (above 18pt) WCAG AAA ✓ Pass

Any Text WCAG AAA ✓ Pass

If you want to check with other color combinations, try the [Color Contrast Checker](#).

Hex C7A3A0 Background



This preview shows how black text looks on a background with the Hex color C7A3A0.



This preview shows how white text looks on a background with the Hex color C7A3A0.

Color Blindness Simulation

Color vision deficiency is a very complex topic, and I could not describe the different causes any better than Wikipedia does, so if you want to learn more, you should check out their [article about color blindness](#).

Dichromacy





Tritanopia
C9A1AD

Trichromacy



Original Color
C7A3A0

Protanomaly
B8A8A3

Deuteranomaly
C3A5A0

Tritanomaly
C8A2A8

Monochromacy



Original Color
C7A3A0

Achromatopsia
ADADAD

Achromatomaly
B6A9A8

CSS Examples

Text

The CSS property to change the color of the text to Hex C7A3A0 is called "color". The color property can be set on classes, ids or directly on the HTML element.

This example shows how text in the color #C7A3A0 looks like.

```
.text, #text, p{  
    color:#C7A3A0  
}
```

If you want to add a text shadow in that color use the text-shadow property, you can generate a text shadow directly with our [CSS Text Shadow Generator](#).

Here you see how black text with a 4 pixel #C7A3A0 colored shadow looks like.

```
.shadow{ text-shadow: 4px 4px 2px #C7A3A0
}
```

Border

The CSS property to change the border of an element to Hex C7A3A0 is called "border". The border property can be set on classes, ids or directly on the HTML element.

This example shows the color as border, it can be applied via the CSS property "border" or "border-color".

```
.border, #border, table{ border:4px solid
#C7A3A0 }
```

If only the border color should be changed use the property `border-color`.

```
.border{ border-color:#C7A3A0 }
```

If you want to add a box shadow in that color use:

Here you see how a box with a 4 pixel #C7A3A0 colored shadow looks like.

```
.boxshadow{ -moz-box-shadow:4px 4px 4px  
4px #C7A3A0; -webkit-box-shadow:4px 4px  
4px 4px #C7A3A0; box-shadow:4px 4px 4px  
4px #C7A3A0 }
```

Background

The CSS property to change the background color of an element to Hex C7A3A0 is called "background". The background property can be set on classes, ids or directly on the HTML element.

```
.background, #background, body{  
background:#C7A3A0 }
```

If only the background color should be changed can be used:

```
.background{ background-color:#C7A3A0 }
```

This example shows the color as background, it is applied via the CSS property "background".

To optimize and compress your CSS code, you can use our [online CSS compressor and optimizer](#) based on csstidy. If you want to create a linear or radial gradient as background or border, check our [CSS Gradient Generator](#).

Hey! You found this booklet interesting? Support Converting Colors with the new Membership Option!

The pro membership hides all ads, plus gives you double the colors in the color bucket, and more awesome pro features!

[Learn more, Memberships starting at \\$2.50/m!](#)

**Follow me
on Twitter!**

@ConvertingColor