

# Converting Colors

Hex(C7A49D)

Have a look what the booklet for  
Hex(C7A49D) contains.

<b>Hex(C7A49D)</b> .....	3
<b><i>Conversions</i></b> .....	4
<b><i>Details</i></b> .....	6
<b><i>Harmonies</i></b> .....	11
<b><i>Previews</i></b> .....	23
<b><i>Color Blindness Simulation</i></b> .....	26
<b><i>CSS Examples</i></b> .....	29

# **Color**

**Hex(C7A49D)**

# Conversions

## Conversions Part 1

<b>Format</b>	<b>Color</b>
Hex	C7A49D
RGB	199, 164, 157
RGB Percent	78%, 64%, 62%
CMY	0.2196, 0.3569, 0.3843
CMYK	0.00, 0.18, 0.21, 0.22
HSL	10°, 27%, 70%
HSV	10°, 21%, 78%
XYZ	42.9145, 41.1274, 37.5748
YIQ	173.6670, 23.1070, 5.2430

# Conversions

## Conversions Part 2

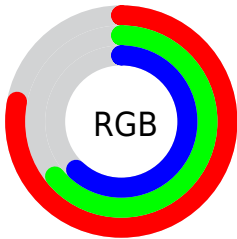
Format	Color
<a href="#">RYB</a>	<a href="#">199, 165, 157</a>
Decimal	<a href="#">13083805</a>
CIELab	<a href="#">70.27, 11.75, 8.45</a>
CIELCh	<a href="#">70, 14.472, 35.717</a>
Yxy	<a href="#">41.1274, 0.3529, 0.3382</a>
Android (android.graphics.Color)	<a href="#">4291273885 (0xFFC7A49D)</a>
YUV	<a href="#">173.6670, -8.2168, 22.2170</a>
Hunter-Lab	<a href="#">64.1306, 7.2187, 10.1528</a>

# Details

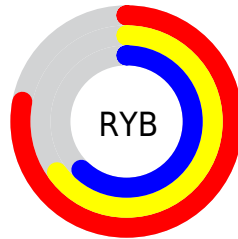
The Hex color **C7A49D** is a light color, and the websafe version is hex **CC9999**. A complement of this color would be **9DC0C7**, and the grayscale version is **AEAEAE**.

A 20% lighter version of the original color is **FFDBD4**, and **91706A** is the 20% darker color. If you saturate the color by 10%, you get **C79389**, and if you desaturate by 10%, it is **C7B5B1**.

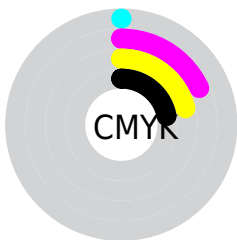
# Distribution



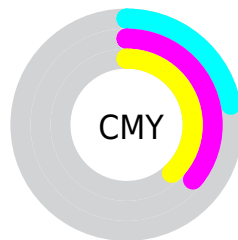
- Red (78%)
- Green (64%)
- Blue (62%)



- Red (78%)
- Yellow (65%)
- Blue (62%)



- Cyan (0%)
- Magenta (18%)
- Yellow (21%)
- Black (22%)



- Cyan (22%)
- Magenta (36%)
- Yellow (38%)

# Brightness & Saturation Gradients

These gradients show how the Hex color C7A49D changes by changing the brightness by 10 percent. The first figure shows a shift by +10% for each color and the second figure -10%.

Similar to the brightness gradients but the following saturation gradients show a change of the Hex color C7A49D by changing the saturation by 10% instead.




 C7A49D

 C7A49D

FFFFFF

 AB8A83

 FFDBD4

 91706A

 FFF8F0

 765852

 5D403B

 452A25

 2E1510

 190000

 000000

 C7A49D

 C7A49D

 C79389

 C7B5B1

 C78375

 C7C5C5

 C77261

 C7D6D9

 C7624D

 C7E6ED

 C7513A

 C7F7FF

 C74126

 C7FFFF

 C73012

 C72100

# Harmonies

## Analogous

The Analogous color harmony consists of three colors that are next to each other on the color wheel.



C7A3AA



C7A49D



C0A794

# Triad

The Triadic color harmony groups three colors that are evenly spaced from another and form a triangle on the color wheel.



C7A49D



96B3A1



A1ACC6

# Complementary

The Complementary color scheme is a pair of colors which are on the opposite of each other on the color wheel.



C7A49D



9DC0C7

# Split Complementary

Split-complementary colors differ from the complementary color scheme. The scheme consists of three colors, the original color and two neighbors of the complement color.



92B0C3



C7A49D



8CB4AE

# Square

The Square scheme is like the rectangle color scheme, but the four colors are evenly spaced on the color wheel.



C7A49D



A5B096



8AB3BB



B1A8C1

# Rectangle

The Rectangle color scheme consists of four colors that form a rectangle on the color wheel.



C7A49D



B8AA92



8AB3BB



9BADC6



# Sweetspot

The Sweet Spot groups the original color and five complimentary colors.



C7A49D



FFF2F0



C79DC0



807877



000000



808080

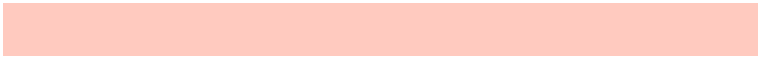


# Same Dimension

The Same Dimension uses a secret algorithm to generate beautiful new colors.



C7A49D



FFCABF



C7B99D



635B5A



A31B00



240600

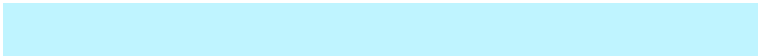


# Inverse Universe

The Inverse Universe completely reimagines the original color for something new.



9DC0C7



BFF4FF



9DABC7



5A6263



0088A3

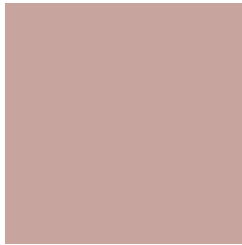


001E24



# Previews

## White Background



This preview shows how the Hex color C7A49D looks on a white background.

## Color Contrast Check

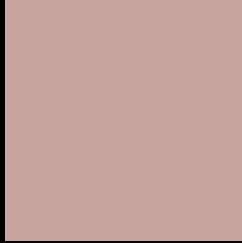
Large Text (above 18pt) WCAG AA × Fail

Any Text WCAG AA × Fail

Large Text (above 18pt) WCAG AAA × Fail

Any Text WCAG AAA × Fail

# Black Background



This preview shows how the Hex color C7A49D looks on a black background.

## Color Contrast Check

Large Text (above 18pt) WCAG AA ✓ Pass

Any Text WCAG AA ✓ Pass

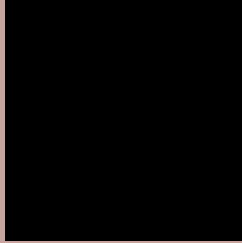
Large Text (above 18pt) WCAG AAA ✓ Pass

Any Text WCAG AAA ✓ Pass

If you want to check with other color combinations, try the [Color Contrast Checker](#).



## Hex C7A49D Background



This preview shows how black text looks on a background with the Hex color C7A49D.

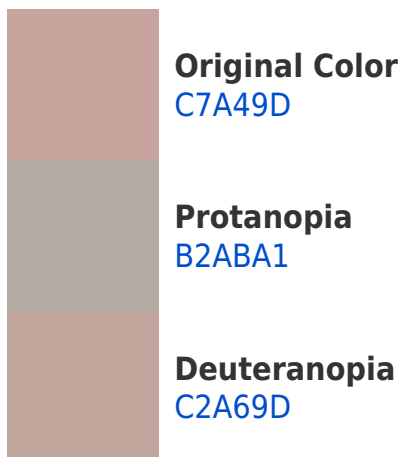


This preview shows how white text looks on a background with the Hex color C7A49D.

# Color Blindness Simulation

Color vision deficiency is a very complex topic, and I could not describe the different causes any better than Wikipedia does, so if you want to learn more, you should check out their [article about color blindness](#).

## Dichromacy





**Tritanopia**  
C9A1AE

# Trichromacy



**Original Color**  
C7A49D

**Protanomaly**  
BAA8A0

**Deuteranomaly**  
C4A59D

**Tritanomaly**  
C8A2A8

# Monochromacy



**Original Color**  
C7A49D

**Achromatopsia**  
AEAEAE

**Achromatomaly**  
B7AAA8

# CSS Examples

## Text

The CSS property to change the color of the text to Hex C7A49D is called "color". The color property can be set on classes, ids or directly on the HTML element.

This example shows how text in the color #C7A49D looks like.

```
.text, #text, p{  
    color:#C7A49D  
}
```

If you want to add a text shadow in that color use the text-shadow property, you can generate a text shadow directly with our [CSS Text Shadow Generator](#).

Here you see how black text with a 4 pixel #C7A49D colored shadow looks like.

```
.shadow{ text-shadow: 4px 4px 2px #C7A49D
}
```

## Border

The CSS property to change the border of an element to Hex C7A49D is called "border". The border property can be set on classes, ids or directly on the HTML element.

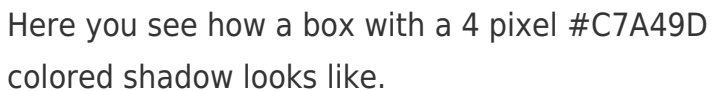
This example shows the color as border, it can be applied via the CSS property "border" or "border-color".

```
.border, #border, table{ border:4px solid
#C7A49D }
```

If only the border color should be changed use the property `border-color`.

```
.border{ border-color:#C7A49D }
```

If you want to add a box shadow in that color use:



Here you see how a box with a 4 pixel #C7A49D colored shadow looks like.

```
.boxshadow{ -moz-box-shadow:4px 4px 4px  
4px #C7A49D; -webkit-box-shadow:4px 4px  
4px 4px #C7A49D; box-shadow:4px 4px 4px  
4px #C7A49D }
```

# Background

The CSS property to change the background color of an element to Hex C7A49D is called "background". The background property can be set on classes, ids or directly on the HTML element.

```
.background, #background, body{  
background:#C7A49D }
```

If only the background color should be changed can be used:

```
.background{ background-color:#C7A49D }
```

This example shows the color as background, it is applied via the CSS property "background".

To optimize and compress your CSS code, you can use our [online CSS compressor and optimizer](#) based on csstidy. If you want to create a linear or radial gradient as background or border, check our [CSS Gradient Generator](#).



Hey! You found this booklet interesting? Support Converting Colors with the new Membership Option!

The pro membership hides all ads, plus gives you double the colors in the color bucket, and more awesome pro features!

**[Learn more, Memberships starting at \\$2.50/m!](#)**

**Follow me  
on Twitter!**

@ConvertingColor