

# Converting Colors

Hex(C7A999)

Have a look what the booklet for  
Hex(C7A999) contains.

<b>Hex(C7A999)</b> .....	3
<b><i>Conversions</i></b> .....	4
<b><i>Details</i></b> .....	6
<b><i>Harmonies</i></b> .....	11
<b><i>Previews</i></b> .....	23
<b><i>Color Blindness Simulation</i></b> .....	26
<b><i>CSS Examples</i></b> .....	29

**Color**

**Hex(C7A999)**

# Conversions

## Conversions Part 1

<b>Format</b>	<b>Color</b>
Hex	C7A999
RGB	199, 169, 153
RGB Percent	78%, 66%, 60%
CMY	0.2196, 0.3373, 0.4000
CMYK	0.00, 0.15, 0.23, 0.22
HSL	21°, 29%, 69%
HSV	21°, 23%, 78%
XYZ	43.4909, 42.8180, 36.1095
YIQ	176.1460, 23.0160, 1.3840

# Conversions

## Conversions Part 2

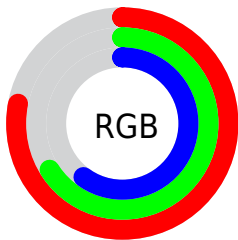
<b>Format</b>	<b>Color</b>
<b>R<sub>YB</sub></b>	199, 178, 153
Decimal	13085081
CIE <sub>Lab</sub>	71.43, 8.43, 12.31
CIE <sub>LCh</sub>	71, 14.919, 55.580
Yxy	42.8180, 0.3553, 0.3498
Android (android.graphics.Color)	4291275161 (0xFFC7A999)
YUV	176.1460, -11.4110, 20.0430
Hunter-Lab	65.4354, 4.1260, 13.0866

# Details

The Hex color **C7A999** is a light color, and the websafe version is hex **CC9999**. A complement of this color would be **99B7C7**, and the grayscale version is **B0B0B0**.

A 20% lighter version of the original color is **FFE0CF**, and **917566** is the 20% darker color. If you saturate the color by 10%, you get **C79C85**, and if you desaturate by 10%, it is **C7B6AD**.

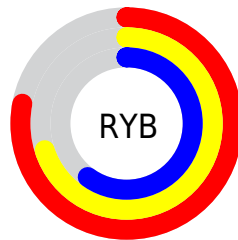
# Distribution



Red (78%)

Green (66%)

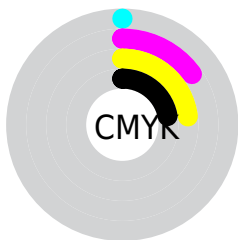
Blue (60%)



Red (78%)

Yellow (70%)

Blue (60%)

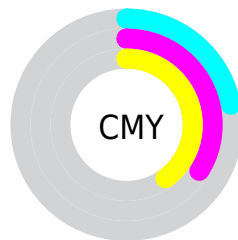


Cyan (0%)

Magenta (15%)

Yellow (23%)

Black (22%)



Cyan (22%)

Magenta (34%)

Yellow (40%)

# Brightness & Saturation Gradients

These gradients show how the Hex color C7A999 changes by changing the brightness by 10 percent. The first figure shows a shift by +10% for each color and the second figure -10%.

Similar to the brightness gradients but the following saturation gradients show a change of the Hex color C7A999 by changing the saturation by 10% instead.





C7A999



C7A999

FFFFFF



AB8F7F



FFE0CF



917566



FFFDEC



765C4E



5D4537



452E22



2E1A0C



180000



000000



C7A999



C7A999

 C79C85

 C7B6AD

 C78F71

 C7C3C1

 C7825D

 C7D0D5

 C77549

 C7DDE9

 C76836

 C7EAFD

 C75B22

 C7F7FF

 C74E0E

 C7FFFF

 C74500

# Harmonies

## Analogous

The Analogous color harmony consists of three colors that are next to each other on the color wheel.



CCA6A4



C7A999



BCAD94

# Triad

The Triadic color harmony groups three colors that are evenly spaced from another and form a triangle on the color wheel.



C7A999



91B7AC



AFACC7

# Complementary

The Complementary color scheme is a pair of colors which are on the opposite of each other on the color wheel.



C7A999



99B7C7

# Split Complementary

Split-complementary colors differ from the complementary color scheme. The scheme consists of three colors, the original color and two neighbors of the complement color.



9EB1CA



C7A999



8CB7BA

# Square

The Square scheme is like the rectangle color scheme, but the four colors are evenly spaced on the color wheel.



C7A999



9EB59F



90B4C5



BFA8BE

# Rectangle

The Rectangle color scheme consists of four colors that form a rectangle on the color wheel.



C7A999



B2B095



90B4C5



A9AEC9



# Sweetspot

The Sweet Spot groups the original color and five complimentary colors.



C7A999



FFF3ED



C799B8



807975



000000



808080



# Same Dimension

The Same Dimension uses a secret algorithm to generate beautiful new colors.



C7A999



FFD0B8



C7BF99



635D5A



A33900



240C00

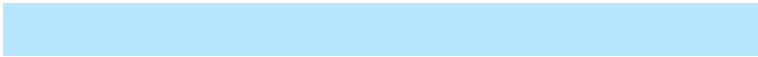


# Inverse Universe

The Inverse Universe completely reimagines the original color for something new.



99B7C7



B8E6FF



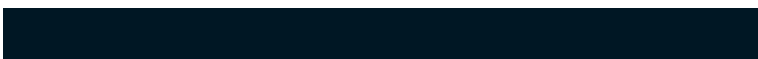
99A1C7



5A6063



006AA3



001724



# Previews

## White Background



This preview shows how the Hex color C7A999 looks on a white background.

## Color Contrast Check

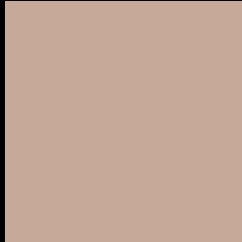
Large Text (above 18pt) WCAG AA × Fail

Any Text WCAG AA × Fail

Large Text (above 18pt) WCAG AAA × Fail

Any Text WCAG AAA × Fail

# Black Background



This preview shows how the Hex color C7A999 looks on a black background.

## Color Contrast Check

Large Text (above 18pt) WCAG AA ✓ Pass

Any Text WCAG AA ✓ Pass

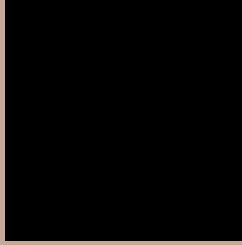
Large Text (above 18pt) WCAG AAA ✓ Pass

Any Text WCAG AAA ✓ Pass

If you want to check with other color combinations, try the [Color Contrast Checker](#).



## Hex C7A999 Background



This preview shows how black text looks on a background with the Hex color C7A999.



This preview shows how white text looks on a background with the Hex color C7A999.

# Color Blindness Simulation

Color vision deficiency is a very complex topic, and I could not describe the different causes any better than Wikipedia does, so if you want to learn more, you should check out their [article about color blindness](#).

## Dichromacy



**Original Color**  
C7A999

**Protanopia**  
B7AF9C

**Deuteranopia**  
C8A999



# Trichromacy



**Original Color**  
C7A999

**Protanomaly**  
BDAD9B

**Deuteranomaly**  
C8A999

**Tritanomaly**  
C9A6A9

# Monochromacy



**Original Color**  
C7A999

**Achromatopsia**  
B0B0B0

**Achromatomaly**  
B8ADA8

# CSS Examples

## Text

The CSS property to change the color of the text to Hex C7A999 is called "color". The color property can be set on classes, ids or directly on the HTML element.

This example shows how text in the color #C7A999 looks like.

```
.text, #text, p{  
    color:#C7A999  
}
```

If you want to add a text shadow in that color use the text-shadow property, you can generate a text shadow directly with our [CSS Text Shadow Generator](#).

Here you see how black text with a 4 pixel #C7A999 colored shadow looks like.

```
.shadow{ text-shadow: 4px 4px 2px #C7A999
}
```

## Border

The CSS property to change the border of an element to Hex C7A999 is called "border". The border property can be set on classes, ids or directly on the HTML element.

This example shows the color as border, it can be applied via the CSS property "border" or "border-color".

```
.border, #border, table{ border:4px solid
#C7A999 }
```

If only the border color should be changed use the property `border-color`.

```
.border{ border-color:#C7A999 }
```

If you want to add a box shadow in that color use:

Here you see how a box with a 4 pixel #C7A999 colored shadow looks like.

```
.boxshadow{ -moz-box-shadow:4px 4px 4px  
4px #C7A999; -webkit-box-shadow:4px 4px  
4px 4px #C7A999; box-shadow:4px 4px 4px  
4px #C7A999 }
```

# Background

The CSS property to change the background color of an element to Hex C7A999 is called "background". The background property can be set on classes, ids or directly on the HTML element.

```
.background, #background, body{  
background:#C7A999 }
```

If only the background color should be changed can be used:

```
.background{ background-color:#C7A999 }
```

This example shows the color as background, it is applied via the CSS property "background".

To optimize and compress your CSS code, you can use our [online CSS compressor and optimizer](#) based on csstidy. If you want to create a linear or radial gradient as background or border, check our [CSS Gradient Generator](#).



Hey! You found this booklet interesting? Support Converting Colors with the new Membership Option!

The pro membership hides all ads, plus gives you double the colors in the color bucket, and more awesome pro features!

**[Learn more, Memberships starting at \\$2.50/m!](#)**

**Follow me  
on Twitter!**

@ConvertingColor