

Converting Colors

Hex(C7AA86)

Have a look what the booklet for
Hex(C7AA86) contains.

Hex(C7AA86)	3
<i>Conversions</i>	4
<i>Details</i>	6
<i>Harmonies</i>	11
<i>Previews</i>	23
<i>Color Blindness Simulation</i>	26
<i>CSS Examples</i>	29

Color

Hex(C7AA86)

Conversions

Conversions Part 1

Format	Color
Hex	C7AA86
RGB	199, 170, 134
RGB Percent	78%, 67%, 53%
CMY	0.2196, 0.3333, 0.4745
CMYK	0.00, 0.15, 0.33, 0.22
HSL	33°, 37%, 65%
HSV	33°, 33%, 78%
XYZ	42.2310, 42.6128, 28.5535
YIQ	174.5670, 28.8400, -5.0480

Conversions

Conversions Part 2

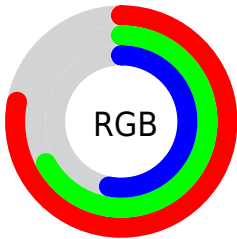
Format	Color
R _Y B	186, 199, 134
Decimal	13085318
CIE Lab	71.29, 5.28, 22.49
CIE LCh	71, 23.098, 76.788
Yxy	42.6128, 0.3724, 0.3758
Android (android.graphics.Color)	4291275398 (0xFFC7AA86)
YUV	174.5670, -19.9995, 21.4277
Hunter-Lab	65.2785, 1.2407, 19.7608

Details

The Hex color **C7AA86** is a light color, and the websafe version is hex **CC9966**. A complement of this color would be **86A3C7**, and the grayscale version is **AFAFAF**.

A 20% lighter version of the original color is **FFE1BB**, and **907654** is the 20% darker color. If you saturate the color by 10%, you get **C7A172**, and if you desaturate by 10%, it is **C7B39A**.

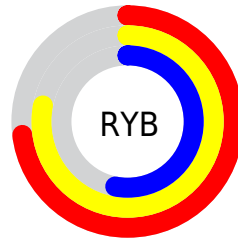
Distribution



Red (78%)

Green (67%)

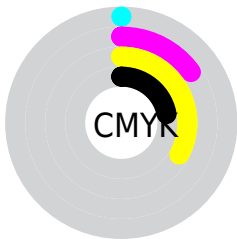
Blue (53%)



Red (73%)

Yellow (78%)

Blue (53%)

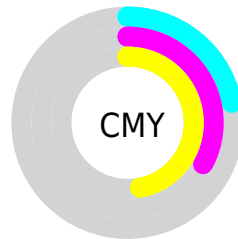


Cyan (0%)

Magenta (15%)

Yellow (33%)

Black (22%)



Cyan (22%)

Magenta (33%)

Yellow (47%)

Brightness & Saturation Gradients

These gradients show how the Hex color C7AA86 changes by changing the brightness by 10 percent. The first figure shows a shift by +10% for each color and the second figure -10%.

Similar to the brightness gradients but the following saturation gradients show a change of the Hex color C7AA86 by changing the saturation by 10% instead.

 C7AA86

 C7AA86

FFFFFF

 AB906D

 FFE1BB

 907654

 FFFED7

 765D3D

 FFFFF4

 5C4626

 433011

 2D1B00

 130000

 000000

 C7AA86

 C7AA86

 C7A172

 C7B39A

 C7985E

 C7BCAE

 C78F4A

 C7C5C2

 C78636

 C7CED6

 C77E23

 C7D6EA

 C7750F

 C7DFFD

 C76E00

 C7E8FF

 C7F1FF

 C7FAFF

Harmonies

Analogous

The Analogous color harmony consists of three colors that are next to each other on the color wheel.



D5A491



C7AA86



B2B186

Triad

The Triadic color harmony groups three colors that are evenly spaced from another and form a triangle on the color wheel.



C7AA86



74BBBA



C0A5CC

Complementary

The Complementary color scheme is a pair of colors which are on the opposite of each other on the color wheel.



C7AA86



86A3C7

Split Complementary

Split-complementary colors differ from the complementary color scheme. The scheme consists of three colors, the original color and two neighbors of the complement color.



A6ACD7



C7AA86



76B8CC

Square

The Square scheme is like the rectangle color scheme, but the four colors are evenly spaced on the color wheel.



C7AA86



83BAA4



89B3D7



D3A0B9

Rectangle

The Rectangle color scheme consists of four colors that form a rectangle on the color wheel.



C7AA86



A2B58C



89B3D7



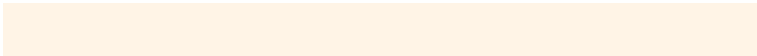
B8A8D0

Sweetspot

The Sweet Spot groups the original color and five complimentary colors.



C7AA86



FFF4E6



C786A3



807970



000000



808080

Same Dimension

The Same Dimension uses a secret algorithm to generate beautiful new colors.



C7AA86



FFD39C



C4C786



635F5A



A35A00



241400

Inverse Universe

The Inverse Universe completely reimagines the original color for something new.



86A3C7



9CC8FF



8986C7



5A5E63



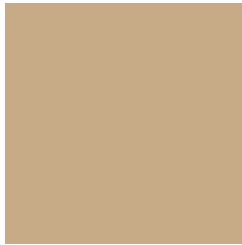
0049A3



001024

Previews

White Background



This preview shows how the Hex color C7AA86 looks on a white background.

Color Contrast Check

Large Text (above 18pt) WCAG AA × Fail

Any Text WCAG AA × Fail

Large Text (above 18pt) WCAG AAA × Fail

Any Text WCAG AAA × Fail

Black Background



This preview shows how the Hex color C7AA86 looks on a black background.

Color Contrast Check

Large Text (above 18pt) WCAG AA ✓ Pass

Any Text WCAG AA ✓ Pass

Large Text (above 18pt) WCAG AAA ✓ Pass

Any Text WCAG AAA ✓ Pass

If you want to check with other color combinations, try the [Color Contrast Checker](#).

Hex C7AA86 Background



This preview shows how black text looks on a background with the Hex color C7AA86.



This preview shows how white text looks on a background with the Hex color C7AA86.

Color Blindness Simulation

Color vision deficiency is a very complex topic, and I could not describe the different causes any better than Wikipedia does, so if you want to learn more, you should check out their [article about color blindness](#).

Dichromacy



Original Color
C7AA86

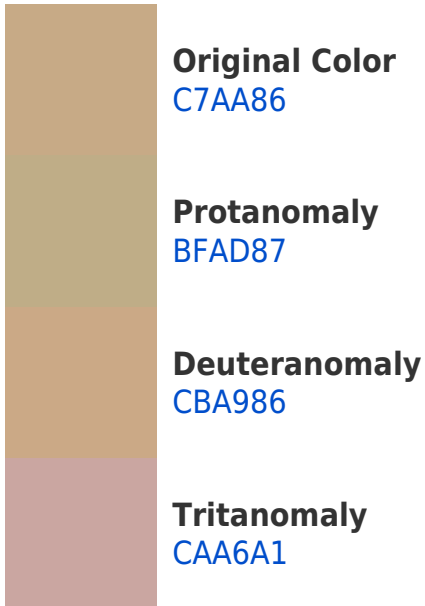
Protanopia
BAAE88

Deuteranopia
CDA886

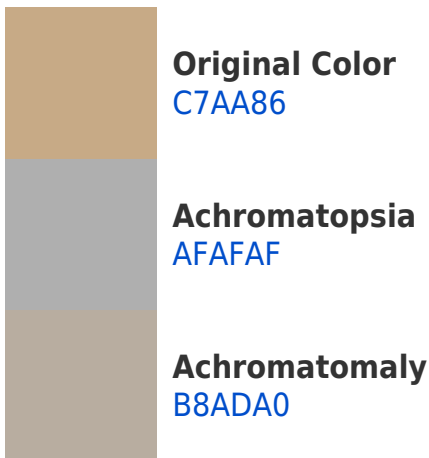


Tritanopia
CCA4B1

Trichromacy



Monochromacy



CSS Examples

Text

The CSS property to change the color of the text to Hex C7AA86 is called "color". The color property can be set on classes, ids or directly on the HTML element.

This example shows how text in the color #C7AA86 looks like.

```
.text, #text, p{  
    color:#C7AA86  
}
```

If you want to add a text shadow in that color use the text-shadow property, you can generate a text shadow directly with our [CSS Text Shadow Generator](#).

Here you see how black text with a 4 pixel #C7AA86 colored shadow looks like.

```
.shadow{ text-shadow: 4px 4px 2px #C7AA86
}
```

Border

The CSS property to change the border of an element to Hex C7AA86 is called "border". The border property can be set on classes, ids or directly on the HTML element.

This example shows the color as border, it can be applied via the CSS property "border" or "border-color".

```
.border, #border, table{ border:4px solid
#C7AA86 }
```

If only the border color should be changed use the property `border-color`.

```
.border{ border-color:#C7AA86 }
```

If you want to add a box shadow in that color use:

Here you see how a box with a 4 pixel #C7AA86 colored shadow looks like.

```
.boxshadow{ -moz-box-shadow:4px 4px 4px  
4px #C7AA86; -webkit-box-shadow:4px 4px  
4px 4px #C7AA86; box-shadow:4px 4px 4px  
4px #C7AA86 }
```

Background

The CSS property to change the background color of an element to Hex C7AA86 is called "background". The background property can be set on classes, ids or directly on the HTML element.

```
.background, #background, body{  
background:#C7AA86 }
```

If only the background color should be changed can be used:

```
.background{ background-color:#C7AA86 }
```

This example shows the color as background, it is applied via the CSS property "background".

To optimize and compress your CSS code, you can use our [online CSS compressor and optimizer](#) based on csstidy. If you want to create a linear or radial gradient as background or border, check our [CSS Gradient Generator](#).

Hey! You found this booklet interesting? Support Converting Colors with the new Membership Option!

The pro membership hides all ads, plus gives you double the colors in the color bucket, and more awesome pro features!

[Learn more, Memberships starting at \\$2.50/m!](#)

**Follow me
on Twitter!**

@ConvertingColor