

# Converting Colors

Hex(C7AB9E)

Have a look what the booklet for  
Hex(C7AB9E) contains.

<b>Hex(C7AB9E)</b> .....	3
<i><b>Conversions</b></i> .....	4
<i><b>Details</b></i> .....	6
<i><b>Harmonies</b></i> .....	11
<i><b>Previews</b></i> .....	23
<i><b>Color Blindness Simulation</b></i> .....	26
<i><b>CSS Examples</b></i> .....	29

# **Color**

**Hex(C7AB9E)**

# Conversions

## Conversions Part 1

Format	Color
Hex	C7AB9E
RGB	199, 171, 158
RGB Percent	78%, 67%, 62%
CMY	0.2196, 0.3294, 0.3804
CMYK	0.00, 0.14, 0.21, 0.22
HSL	19°, 27%, 70%
HSV	19°, 21%, 78%
XYZ	44.2877, 43.7366, 38.4555
YIQ	177.8900, 20.8610, 1.8930

# Conversions

## Conversions Part 2

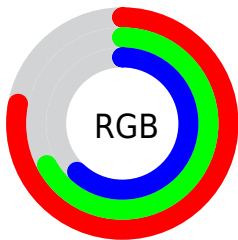
Format	Color
<a href="#">RYB</a>	<a href="#">199, 177, 158</a>
Decimal	<a href="#">13085598</a>
CIELab	<a href="#">72.05, 8.10, 10.44</a>
CIElCh	<a href="#">72, 13.213, 52.213</a>
Yxy	<a href="#">43.7366, 0.3502, 0.3458</a>
Android (android.graphics.Color)	<a href="#">4291275678</a> ( <a href="#">0xFFC7AB9E</a> )
YUV	<a href="#">177.8900, -9.8058, 18.5135</a>
Hunter-Lab	<a href="#">66.1336, 3.8021, 11.8174</a>

# Details

The Hex color **C7AB9E** is a light color, and the websafe version is hex **CC9999**. A complement of this color would be **9EBAC7**, and the grayscale version is **B2B2B2**.

A 20% lighter version of the original color is **FFE2D5**, and **91776B** is the 20% darker color. If you saturate the color by 10%, you get **C79D8A**, and if you desaturate by 10%, it is **C7B9B2**.

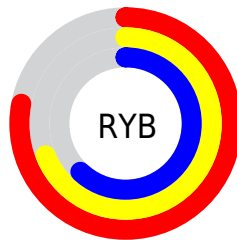
# Distribution



Red (78%)

Green (67%)

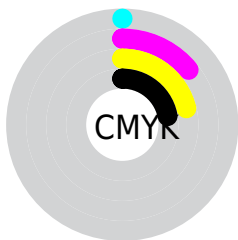
Blue (62%)



Red (78%)

Yellow (69%)

Blue (62%)

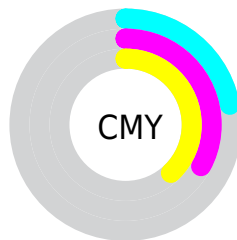


Cyan (0%)

Magenta (14%)

Yellow (21%)

Black (22%)



Cyan (22%)

Magenta (33%)

Yellow (38%)

# Brightness & Saturation Gradients

These gradients show how the Hex color C7AB9E changes by changing the brightness by 10 percent. The first figure shows a shift by +10% for each color and the second figure -10%.

Similar to the brightness gradients but the following saturation gradients show a change of the Hex color C7AB9E by changing the saturation by 10% instead.



 C7AB9E

 C7AB9E

FFFFFF

 AB9084

 FFE2D5

 91776B

 FFFFFF1

 775E52

 5D463B

 453026

 2E1B11

 190100

 000000

 C7AB9E

 C7AB9E

 C79D8A

 C7B9B2

 C79076

 C7C6C6

 C78262

 C7D4DA

 C7754E

 C7E1EE

 C7673B

 C7EFFF

 C75927

 C7FDFE

 C74C13

 C7FFFF

 C73F00

# Harmonies

## Analogous

The Analogous color harmony consists of three colors that are next to each other on the color wheel.



CBA9A8



C7AB9E



BEAF99

# Triad

The Triadic color harmony groups three colors that are evenly spaced from another and form a triangle on the color wheel.



C7AB9E



97B8AD



AFAFC7

# Complementary

The Complementary color scheme is a pair of colors which are on the opposite of each other on the color wheel.



C7AB9E



9EBAC7

# Split Complementary

Split-complementary colors differ from the complementary color scheme. The scheme consists of three colors, the original color and two neighbors of the complement color.



A0B3C8



C7AB9E



92B8B9

# Square

The Square scheme is like the rectangle color scheme, but the four colors are evenly spaced on the color wheel.



C7AB9E



A3B6A2



95B6C3



BDABC0

# Rectangle

The Rectangle color scheme consists of four colors that form a rectangle on the color wheel.



C7AB9E



B5B199



95B6C3



AAB0C8



# Sweetspot

The Sweet Spot groups the original color and five complimentary colors.



C7AB9E



FFF5F0



C79EBA



807977



000000



808080



# Same Dimension

The Same Dimension uses a secret algorithm to generate beautiful new colors.



C7AB9E



FFD3BF



C7BF9E



635D5A



A33400



240B00

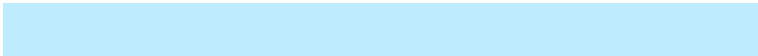


# Inverse Universe

The Inverse Universe completely reimagines the original color for something new.



9EBAC7



BFEBFF



9EA6C7



5A6063



006FA3



001824



# Previews

## White Background



This preview shows how the Hex color C7AB9E looks on a white background.

## Color Contrast Check

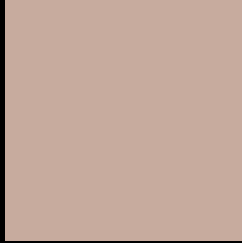
Large Text (above 18pt) WCAG AA × Fail

Any Text WCAG AA × Fail

Large Text (above 18pt) WCAG AAA × Fail

Any Text WCAG AAA × Fail

# Black Background



This preview shows how the Hex color C7AB9E looks on a black background.

## Color Contrast Check

Large Text (above 18pt) WCAG AA ✓ Pass

Any Text WCAG AA ✓ Pass

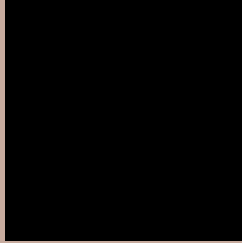
Large Text (above 18pt) WCAG AAA ✓ Pass

Any Text WCAG AAA ✓ Pass

If you want to check with other color combinations, try the [Color Contrast Checker](#).



## Hex C7AB9E Background



This preview shows how black text looks on a background with the Hex color C7AB9E.

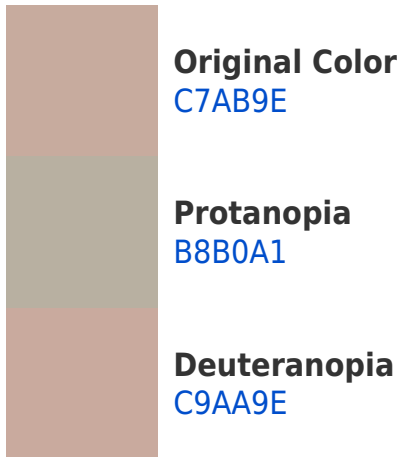


This preview shows how white text looks on a background with the Hex color C7AB9E.

# Color Blindness Simulation

Color vision deficiency is a very complex topic, and I could not describe the different causes any better than Wikipedia does, so if you want to learn more, you should check out their [article about color blindness](#).

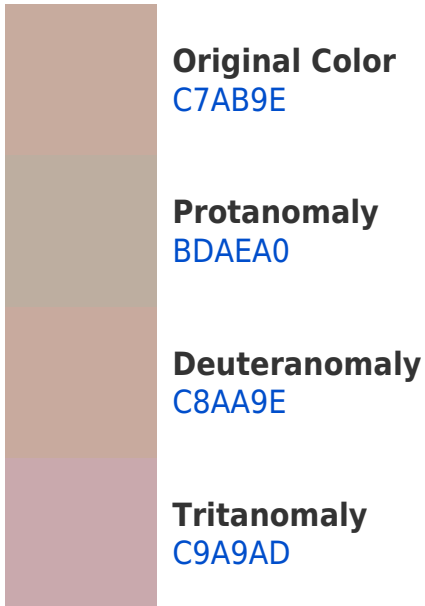
## Dichromacy



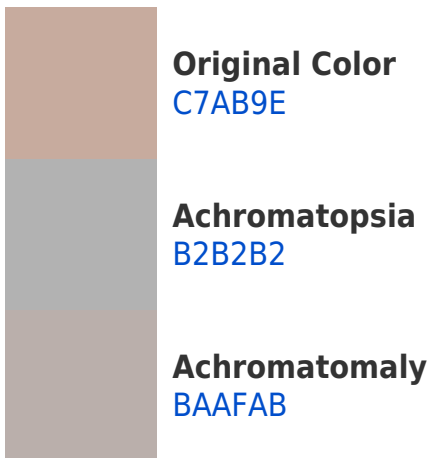


**Tritanopia**  
CAA8B5

# Trichromacy



# Monochromacy



# CSS Examples

## Text

The CSS property to change the color of the text to Hex C7AB9E is called "color". The color property can be set on classes, ids or directly on the HTML element.

This example shows how text in the color #C7AB9E looks like.

```
.text, #text, p{  
    color:#C7AB9E  
}
```

If you want to add a text shadow in that color use the text-shadow property, you can generate a text shadow directly with our [CSS Text Shadow Generator](#).

Here you see how black text with a 4 pixel #C7AB9E colored shadow looks like.

```
.shadow{ text-shadow: 4px 4px 2px #C7AB9E
}
```

## Border

The CSS property to change the border of an element to Hex C7AB9E is called "border". The border property can be set on classes, ids or directly on the HTML element.

This example shows the color as border, it can be applied via the CSS property "border" or "border-color".

```
.border, #border, table{ border:4px solid
#C7AB9E }
```

If only the border color should be changed use the property `border-color`.

```
.border{ border-color:#C7AB9E }
```

If you want to add a box shadow in that color use:

Here you see how a box with a 4 pixel #C7AB9E colored shadow looks like.

```
.boxshadow{ -moz-box-shadow:4px 4px 4px  
4px #C7AB9E; -webkit-box-shadow:4px 4px  
4px 4px #C7AB9E; box-shadow:4px 4px 4px  
4px #C7AB9E }
```

# Background

The CSS property to change the background color of an element to Hex C7AB9E is called "background". The background property can be set on classes, ids or directly on the HTML element.

```
.background, #background, body{  
background:#C7AB9E }
```

If only the background color should be changed can be used:

```
.background{ background-color:#C7AB9E }
```

This example shows the color as background, it is applied via the CSS property "background".

To optimize and compress your CSS code, you can use our [online CSS compressor and optimizer](#) based on csstidy. If you want to create a linear or radial gradient as background or border, check our [CSS Gradient Generator](#).



Hey! You found this booklet interesting? Support Converting Colors with the new Membership Option!

The pro membership hides all ads, plus gives you double the colors in the color bucket, and more awesome pro features!

**[Learn more, Memberships starting at \\$2.50/m!](#)**

**Follow me  
on Twitter!**

@ConvertingColor