

Converting Colors

Hex(C7AEAE)

Have a look what the booklet for
Hex(C7AEAE) contains.

Hex(C7AEAE)	3
<i>Conversions</i>	4
<i>Details</i>	6
<i>Harmonies</i>	11
<i>Previews</i>	23
<i>Color Blindness Simulation</i>	26
<i>CSS Examples</i>	29

Color

Hex(C7AEAE)

Conversions

Conversions Part 1

Format	Color
Hex	C7AEAE
RGB	199, 174, 174
RGB Percent	78%, 68%, 68%
CMY	0.2196, 0.3176, 0.3176
CMYK	0.00, 0.13, 0.13, 0.22
HSL	0°, 18%, 73%
HSV	0°, 13%, 78%
XYZ	46.3292, 45.4702, 46.3792
YIQ	181.4750, 14.9000, 5.3000

Conversions

Conversions Part 2

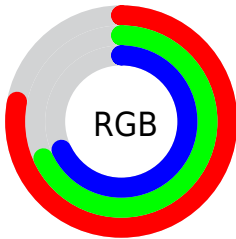
Format	Color
RYB	199, 174, 174
Decimal	13086382
CIELab	73.20, 9.01, 3.31
CIElCh	73, 9.602, 20.176
Yxy	45.4702, 0.3353, 0.3291
Android (android.graphics.Color)	4291276462 (0xFFC7AEAE)
YUV	181.4750, -3.6852, 15.3694
Hunter-Lab	67.4316, 4.6340, 6.4227

Details

The Hex color **C7AEAE** is a light color, and the websafe version is hex **CC9999**. A complement of this color would be **AEC7C7**, and the grayscale version is **B6B6B6**.

A 20% lighter version of the original color is **FFE5E5**, and **917A7A** is the 20% darker color. If you saturate the color by 10%, you get **C79A9A**, and if you desaturate by 10%, it is **C7C2C2**.

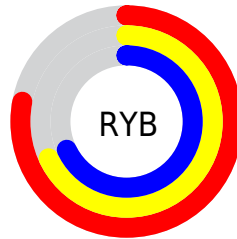
Distribution



Red (78%)

Green (68%)

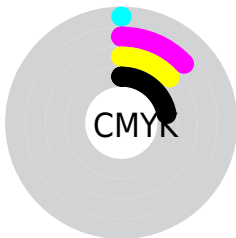
Blue (68%)



Red (78%)

Yellow (68%)

Blue (68%)

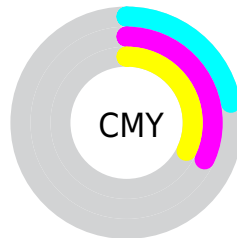


Cyan (0%)

Magenta (13%)

Yellow (13%)

Black (22%)



Cyan (22%)

Magenta (32%)

Yellow (32%)

Brightness & Saturation Gradients

These gradients show how the Hex color C7AEAE changes by changing the brightness by 10 percent. The first figure shows a shift by +10% for each color and the second figure -10%.

Similar to the brightness gradients but the following saturation gradients show a change of the Hex color C7AEAE by changing the saturation by 10% instead.

 C7AEAE

 C7AEAE

FFFFFF

 AC9393

 FFE5E5

 917A7A

 776161

 5E4949

 463233

 2F1D1E

 1C0404

 000000

 C7AEAE

 C7AEAE

 C79A9A

 C7C2C2

 C78686

 C7D6D6

 C77272

 C7EAEA

 C75E5E

 C7FEFE

 C74B4B

 C7FFFF

 C73737

 C72323

 C70F0F

 C70000

Harmonies

Analogous

The Analogous color harmony consists of three colors that are next to each other on the color wheel.



C4AEB7



C7AEAE



C5B0A7

Triad

The Triadic color harmony groups three colors that are evenly spaced from another and form a triangle on the color wheel.



C7AEAE



AAB7A8



A7B5C5

Complementary

The Complementary color scheme is a pair of colors which are on the opposite of each other on the color wheel.



C7AEAE



AEC7C7

Split Complementary

Split-complementary colors differ from the complementary color scheme. The scheme consists of three colors, the original color and two neighbors of the complement color.



A0B8C1



C7AEAE



A2B9B0

Square

The Square scheme is like the rectangle color scheme, but the four colors are evenly spaced on the color wheel.



C7AEAE



B5B5A3



9EB9B9



B2B2C4

Rectangle

The Rectangle color scheme consists of four colors that form a rectangle on the color wheel.



C7AEAE



C1B1A3



9EB9B9



A4B6C4

Sweetspot

The Sweet Spot groups the original color and five complimentary colors.



C7AEAE



FFF5F5



C7AEC7



807979



000000



808080

Same Dimension

The Same Dimension uses a secret algorithm to generate beautiful new colors.



C7AEAE



FFD9D9



C7BBAE



635A5A



A30000



240000

Inverse Universe

The Inverse Universe completely reimagines the original color for something new.



AEC7C7



D9FFFF



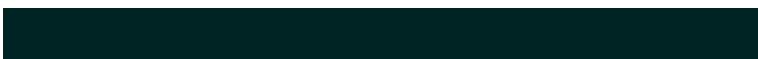
AEBBC7



5A6363



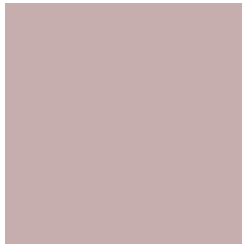
00A3A3



002424

Previews

White Background



This preview shows how the Hex color C7AEAE looks on a white background.

Color Contrast Check

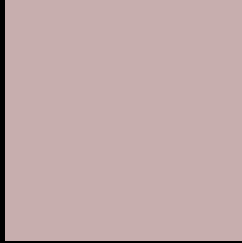
Large Text (above 18pt) WCAG AA × Fail

Any Text WCAG AA × Fail

Large Text (above 18pt) WCAG AAA × Fail

Any Text WCAG AAA × Fail

Black Background



This preview shows how the Hex color C7AEAE looks on a black background.

Color Contrast Check

Large Text (above 18pt) WCAG AA ✓ Pass

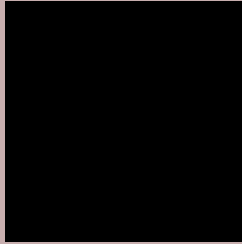
Any Text WCAG AA ✓ Pass

Large Text (above 18pt) WCAG AAA ✓ Pass

Any Text WCAG AAA ✓ Pass

If you want to check with other color combinations, try the [Color Contrast Checker](#).

Hex C7AEAE Background



This preview shows how black text looks on a background with the Hex color C7AEAE.

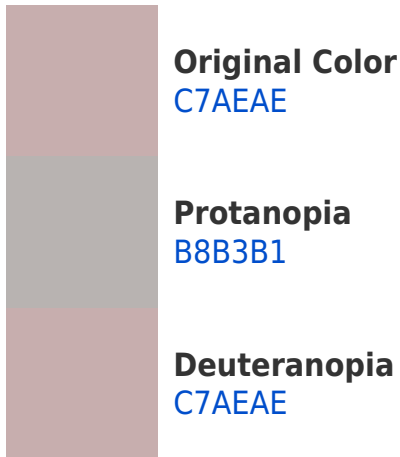


This preview shows how white text looks on a background with the Hex color C7AEAE.

Color Blindness Simulation

Color vision deficiency is a very complex topic, and I could not describe the different causes any better than Wikipedia does, so if you want to learn more, you should check out their [article about color blindness](#).

Dichromacy



Trichromacy



Original Color
C7AEAE

Protanomaly
BDB1B0

Deuteranomaly
C7AEAE

Tritanomaly
C8ADB6

Monochromacy



Original Color
C7AEAE

Achromatopsia
B5B5B5

Achromatomaly
BCB2B2

CSS Examples

Text

The CSS property to change the color of the text to Hex C7AEAE is called "color". The color property can be set on classes, ids or directly on the HTML element.

This example shows how text in the color #C7AEAE looks like.

```
.text, #text, p{  
    color:#C7AEAE  
}
```

If you want to add a text shadow in that color use the text-shadow property, you can generate a text shadow directly with our [CSS Text Shadow Generator](#).

Here you see how black text with a 4 pixel #C7AEAE colored shadow looks like.

```
.shadow{ text-shadow: 4px 4px 2px #C7AEAE
}
```

Border

The CSS property to change the border of an element to Hex C7AEAE is called "border". The border property can be set on classes, ids or directly on the HTML element.

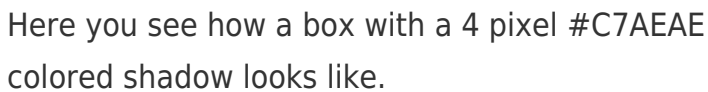
This example shows the color as border, it can be applied via the CSS property "border" or "border-color".

```
.border, #border, table{ border:4px solid
#C7AEAE }
```

If only the border color should be changed use the property `border-color`.

```
.border{ border-color:#C7AEAE }
```

If you want to add a box shadow in that color use:



Here you see how a box with a 4 pixel #C7AEAE colored shadow looks like.

```
.boxshadow{ -moz-box-shadow:4px 4px 4px  
4px #C7AEAE; -webkit-box-shadow:4px 4px  
4px 4px #C7AEAE; box-shadow:4px 4px 4px  
4px #C7AEAE }
```

Background

The CSS property to change the background color of an element to Hex C7AEAE is called "background". The background property can be set on classes, ids or directly on the HTML element.

```
.background, #background, body{  
background:#C7AEAE }
```

If only the background color should be changed can be used:

```
.background{ background-color:#C7AEAE }
```

This example shows the color as background, it is applied via the CSS property "background".

To optimize and compress your CSS code, you can use our [online CSS compressor and optimizer](#) based on csstidy. If you want to create a linear or radial gradient as background or border, check our [CSS Gradient Generator](#).

Hey! You found this booklet interesting? Support Converting Colors with the new Membership Option!

The pro membership hides all ads, plus gives you double the colors in the color bucket, and more awesome pro features!

[Learn more, Memberships starting at \\$2.50/m!](#)

**Follow me
on Twitter!**

@ConvertingColor