

Converting Colors

Hex(C7AF96)

Have a look what the booklet for
Hex(C7AF96) contains.

Hex(C7AF96)	3
<i>Conversions</i>	4
<i>Details</i>	6
<i>Harmonies</i>	11
<i>Previews</i>	23
<i>Color Blindness Simulation</i>	26
<i>CSS Examples</i>	29

Color

Hex(C7AF96)

Conversions

Conversions Part 1

Format	Color
Hex	C7AF96
RGB	199, 175, 150
RGB Percent	78%, 69%, 59%
CMY	0.2196, 0.3137, 0.4118
CMYK	0.00, 0.12, 0.25, 0.22
HSL	31°, 30%, 68%
HSV	31°, 25%, 78%
XYZ	44.3882, 45.0041, 35.2013
YIQ	179.3260, 22.3290, -2.6870

Conversions

Conversions Part 2

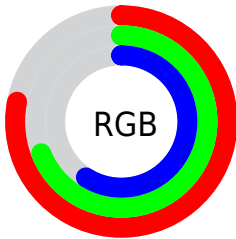
Format	Color
RYB	197, 199, 150
Decimal	13086614
CIELab	72.89, 4.76, 16.00
CIELCh	73, 16.693, 73.441
Yxy	45.0041, 0.3563, 0.3612
Android (android.graphics.Color)	4291276694 (0xFFC7AF96)
YUV	179.3260, -14.4577, 17.2541
Hunter-Lab	67.0851, 0.7092, 15.8485

Details

The Hex color **C7AF96** is a light color, and the websafe version is hex **CC9999**. A complement of this color would be **96AEC7**, and the grayscale version is **B3B3B3**.

A 20% lighter version of the original color is **FFE6CC**, and **917B63** is the 20% darker color. If you saturate the color by 10%, you get **C7A582**, and if you desaturate by 10%, it is **C7B9AA**.

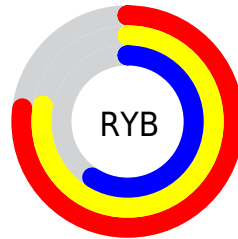
Distribution



Red (78%)

Green (69%)

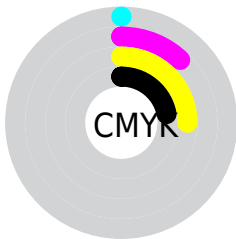
Blue (59%)



Red (77%)

Yellow (78%)

Blue (59%)

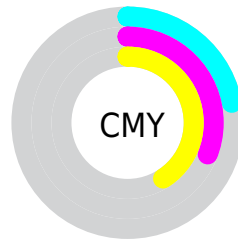


Cyan (0%)

Magenta (12%)

Yellow (25%)

Black (22%)



Cyan (22%)

Magenta (31%)

Yellow (41%)

Brightness & Saturation Gradients

These gradients show how the Hex color C7AF96 changes by changing the brightness by 10 percent. The first figure shows a shift by +10% for each color and the second figure -10%.

Similar to the brightness gradients but the following saturation gradients show a change of the Hex color C7AF96 by changing the saturation by 10% instead.

 C7AF96

 C7AF96

FFFFFF

 AB947C

 FFE6CC

 917B63

 FFFFFE8

 76624B

 5D4A34

 45331F

 2E1E08

 170600

 000000

 C7AF96

 C7AF96

 C7A582

 C7B9AA

 C79C6E

 C7C2BE

 C7925A

 C7CCD2

 C78846

 C7D6E6

 C77E33

 C7E0FA

 C7751F

 C7E9FF

 C76B0B

 C7F3FF

 C76600

 C7FDFD

 C7FFFF

Harmonies

Analogous

The Analogous color harmony consists of three colors that are next to each other on the color wheel.



D1AB9F



C7AF96



B8B495

Triad

The Triadic color harmony groups three colors that are evenly spaced from another and form a triangle on the color wheel.



C7AF96



8CBCB9



BEADC9

Complementary

The Complementary color scheme is a pair of colors which are on the opposite of each other on the color wheel.



C7AF96



96AEC7

Split Complementary

Split-complementary colors differ from the complementary color scheme. The scheme consists of three colors, the original color and two neighbors of the complement color.



ABB2D0



C7AF96



8CBAC7

Square

The Square scheme is like the rectangle color scheme, but the four colors are evenly spaced on the color wheel.



C7AF96



96BBAA



98B7D0



CDA9BC

Rectangle

The Rectangle color scheme consists of four colors that form a rectangle on the color wheel.



C7AF96



ACB799



98B7D0



B8AECC

Sweetspot

The Sweet Spot groups the original color and five complimentary colors.



C7AF96



FFF6ED



C796AF



807B75



000000



808080

Same Dimension

The Same Dimension uses a secret algorithm to generate beautiful new colors.



C7AF96



FFDAB3



C7C796



635F5A



A35300



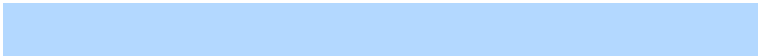
241200

Inverse Universe

The Inverse Universe completely reimagines the original color for something new.



96AEC7



B3D8FF



9696C7



5A5E63



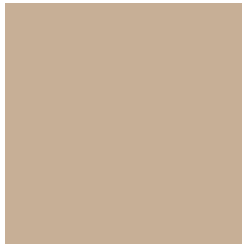
0050A3



001124

Previews

White Background



This preview shows how the Hex color C7AF96 looks on a white background.

Color Contrast Check

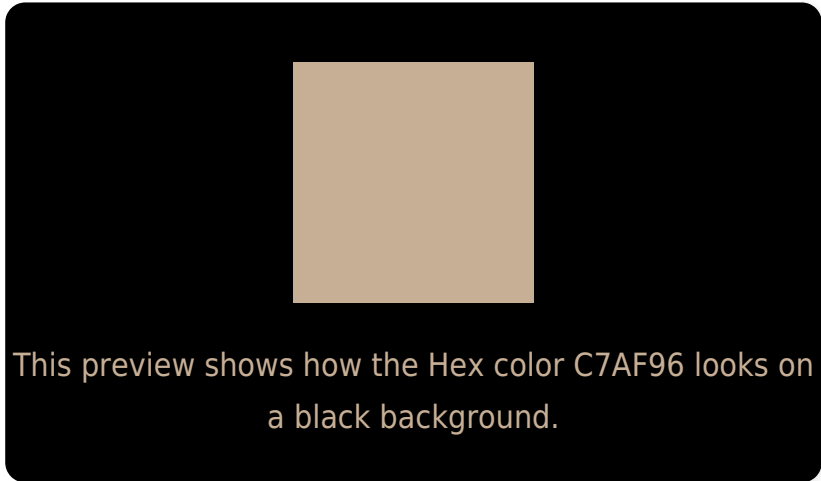
Large Text (above 18pt) WCAG AA × Fail

Any Text WCAG AA × Fail

Large Text (above 18pt) WCAG AAA × Fail

Any Text WCAG AAA × Fail

Black Background



Color Contrast Check

Large Text (above 18pt) WCAG AA ✓ Pass

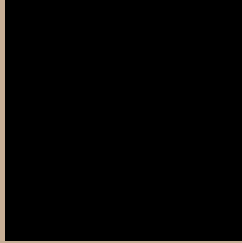
Any Text WCAG AA ✓ Pass

Large Text (above 18pt) WCAG AAA ✓ Pass

Any Text WCAG AAA ✓ Pass

If you want to check with other color combinations, try the [Color Contrast Checker](#).

Hex C7AF96 Background



This preview shows how black text looks on a background with the Hex color C7AF96.



This preview shows how white text looks on a background with the Hex color C7AF96.

Color Blindness Simulation

Color vision deficiency is a very complex topic, and I could not describe the different causes any better than Wikipedia does, so if you want to learn more, you should check out their [article about color blindness](#).

Dichromacy

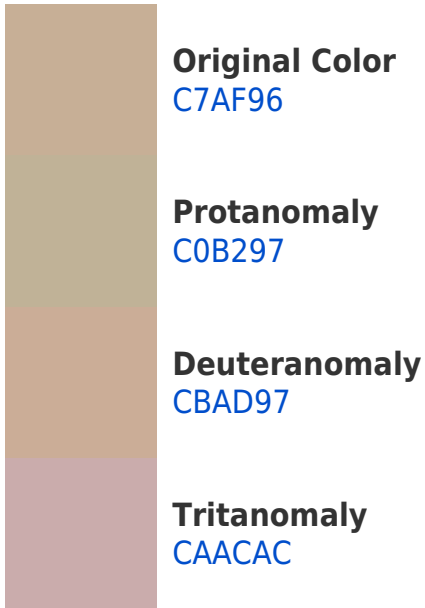


Original Color
C7AF96

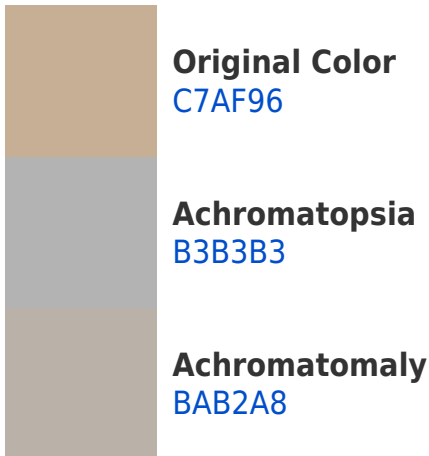
Protanopia
BCB398

Deuteranopia
CEAC97

Trichromacy



Monochromacy



CSS Examples

Text

The CSS property to change the color of the text to Hex C7AF96 is called "color". The color property can be set on classes, ids or directly on the HTML element.

This example shows how text in the color #C7AF96 looks like.

```
.text, #text, p{  
    color:#C7AF96  
}
```

If you want to add a text shadow in that color use the text-shadow property, you can generate a text shadow directly with our [CSS Text Shadow Generator](#).

Here you see how black text with a 4 pixel #C7AF96 colored shadow looks like.

```
.shadow{ text-shadow: 4px 4px 2px #C7AF96
}
```

Border

The CSS property to change the border of an element to Hex C7AF96 is called "border". The border property can be set on classes, ids or directly on the HTML element.

This example shows the color as border, it can be applied via the CSS property "border" or "border-color".

```
.border, #border, table{ border:4px solid
#C7AF96 }
```

If only the border color should be changed use the property `border-color`.

```
.border{ border-color:#C7AF96 }
```

If you want to add a box shadow in that color use:

Here you see how a box with a 4 pixel #C7AF96 colored shadow looks like.

```
.boxshadow{ -moz-box-shadow:4px 4px 4px  
4px #C7AF96; -webkit-box-shadow:4px 4px  
4px 4px #C7AF96; box-shadow:4px 4px 4px  
4px #C7AF96 }
```

Background

The CSS property to change the background color of an element to Hex C7AF96 is called "background". The background property can be set on classes, ids or directly on the HTML element.

```
.background, #background, body{  
background:#C7AF96 }
```

If only the background color should be changed can be used:

```
.background{ background-color:#C7AF96 }
```

This example shows the color as background, it is applied via the CSS property "background".

To optimize and compress your CSS code, you can use our [online CSS compressor and optimizer](#) based on csstidy. If you want to create a linear or radial gradient as background or border, check our [CSS Gradient Generator](#).

Hey! You found this booklet interesting? Support Converting Colors with the new Membership Option!

The pro membership hides all ads, plus gives you double the colors in the color bucket, and more awesome pro features!

[Learn more, Memberships starting at \\$2.50/m!](#)

**Follow me
on Twitter!**

@ConvertingColor