

Converting Colors

Hex(C7AFB7)

Have a look what the booklet for
Hex(C7AFB7) contains.

Hex(C7AFB7)	3
<i>Conversions</i>	4
<i>Details</i>	6
<i>Harmonies</i>	11
<i>Previews</i>	23
<i>Color Blindness Simulation</i>	26
<i>CSS Examples</i>	29

Color

Hex(C7AFB7)

Conversions

Conversions Part 1

Format	Color
Hex	C7AFB7
RGB	199, 175, 183
RGB Percent	78%, 69%, 72%
CMY	0.2196, 0.3137, 0.2824
CMYK	0.00, 0.12, 0.08, 0.22
HSL	340°, 18%, 73%
HSV	340°, 12%, 78%
XYZ	47.4304, 46.2210, 51.2214
YIQ	183.0880, 11.7360, 7.5760

Conversions

Conversions Part 2

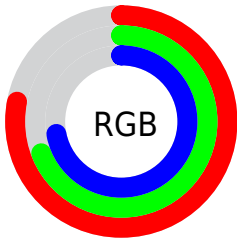
Format	Color
RYB	199, 175, 183
Decimal	13086647
CIELab	73.69, 10.00, -0.91
CIElCh	74, 10.043, 354.796
Yxy	46.2210, 0.3274, 0.3190
Android (android.graphics.Color)	4291276727 (0xFFC7AFB7)
YUV	183.0880, -0.0434, 13.9548
Hunter-Lab	67.9860, 5.5550, 2.9204

Details

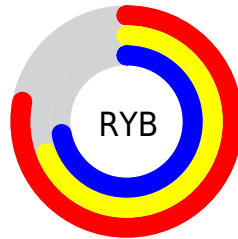
The Hex color **C7AFB7** is a light color, and the websafe version is hex **CCCCCC**. A complement of this color would be **AFC7BF**, and the grayscale version is **B7B7B7**.

A 20% lighter version of the original color is **FFE7EF**, and **917B82** is the 20% darker color. If you saturate the color by 10%, you get **C79BAA**, and if you desaturate by 10%, it is **C7C3C4**.

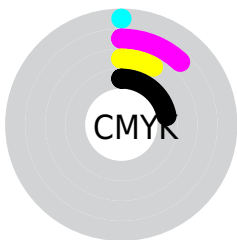
Distribution



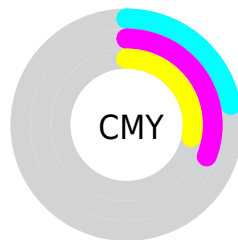
- Red (78%)
- Green (69%)
- Blue (72%)



- Red (78%)
- Yellow (69%)
- Blue (72%)



- Cyan (0%)
- Magenta (12%)
- Yellow (8%)
- Black (22%)



- Cyan (22%)
- Magenta (31%)
- Yellow (28%)

Brightness & Saturation Gradients

These gradients show how the Hex color C7AFB7 changes by changing the brightness by 10 percent. The first figure shows a shift by +10% for each color and the second figure -10%.

Similar to the brightness gradients but the following saturation gradients show a change of the Hex color C7AFB7 by changing the saturation by 10% instead.


 C7AFB7

FFFFFF

 FFE7EF

 C7AFB7

 AC949C

 917B82

 776269

 5E4A51

 46333A

 301E24

 1C060F

 000000

 C7AFB7

 C7AFB7

 C79BAA

 C7C3C4

 C7879C

 C7D7D2

 C7738F

 C7EBDF

 C75F82

 C7FFEC

 C74C75

 C7FFF9

 C73867

 C7FFFF

 C7245A

 C7104D

 C70042

Harmonies

Analogous

The Analogous color harmony consists of three colors that are next to each other on the color wheel.



C0B1C0



C7AFB7



C9AFAE

Triad

The Triadic color harmony groups three colors that are evenly spaced from another and form a triangle on the color wheel.



C7AFB7



B4B7A4



A1B9C4

Complementary

The Complementary color scheme is a pair of colors which are on the opposite of each other on the color wheel.



C7AFB7



AFC7BF

Split Complementary

Split-complementary colors differ from the complementary color scheme. The scheme consists of three colors, the original color and two neighbors of the complement color.



9EBABC



C7AFB7



AAB9AA

Square

The Square scheme is like the rectangle color scheme, but the four colors are evenly spaced on the color wheel.



C7AFB7



BEB4A3



A2BBB3



AAB6C7

Rectangle

The Rectangle color scheme consists of four colors that form a rectangle on the color wheel.



C7AFB7



C8B0A8



A2BBB3



9FBAC2

Sweetspot

The Sweet Spot groups the original color and five complimentary colors.



C7AFB7



FFF5F8



BFAFC7



80797B



000000



808080

Same Dimension

The Same Dimension uses a secret algorithm to generate beautiful new colors.



C7AFB7



FFDBE7



C7B3AF



635A5D



A30036



24000C

Inverse Universe

The Inverse Universe completely reimagines the original color for something new.



C7AFB7



FFDBE7



AFC3C7



635A5D



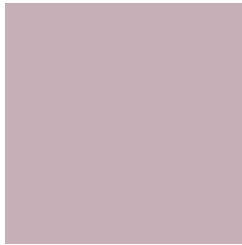
A30036



24000C

Previews

White Background



This preview shows how the Hex color C7AFB7 looks on a white background.

Color Contrast Check

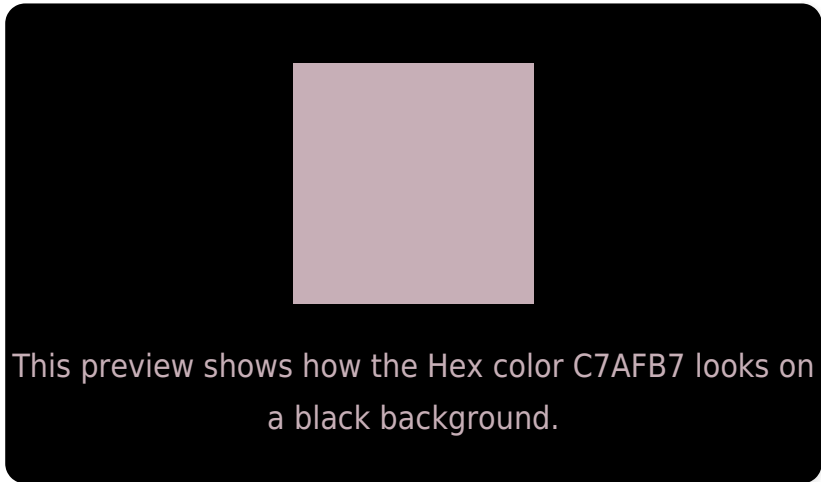
Large Text (above 18pt) WCAG AA × Fail

Any Text WCAG AA × Fail

Large Text (above 18pt) WCAG AAA × Fail

Any Text WCAG AAA × Fail

Black Background



Color Contrast Check

Large Text (above 18pt) WCAG AA ✓ Pass

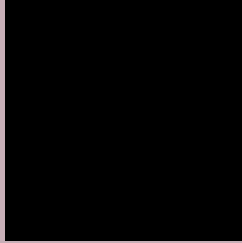
Any Text WCAG AA ✓ Pass

Large Text (above 18pt) WCAG AAA ✓ Pass

Any Text WCAG AAA ✓ Pass

If you want to check with other color combinations, try the [Color Contrast Checker](#).

Hex C7AFB7 Background



This preview shows how black text looks on a background with the Hex color C7AFB7.

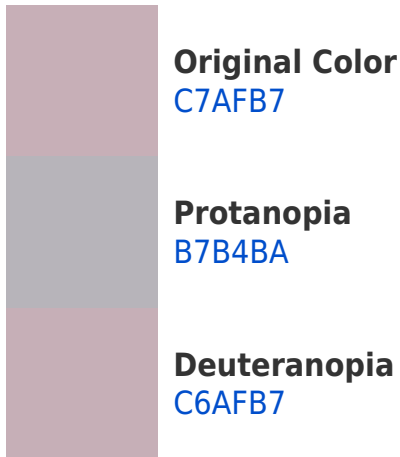


This preview shows how white text looks on a background with the Hex color C7AFB7.

Color Blindness Simulation

Color vision deficiency is a very complex topic, and I could not describe the different causes any better than Wikipedia does, so if you want to learn more, you should check out their [article about color blindness](#).

Dichromacy



Trichromacy



Original Color
C7AFB7

Protanomaly
BDB2B9

Deuteranomaly
C6AFB7

Tritanomaly
C8AEBA

Monochromacy



Original Color
C7AFB7

Achromatopsia
B7B7B7

Achromatomaly
BDB4B7

CSS Examples

Text

The CSS property to change the color of the text to Hex C7AFB7 is called "color". The color property can be set on classes, ids or directly on the HTML element.

This example shows how text in the color #C7AFB7 looks like.

```
.text, #text, p{  
    color:#C7AFB7  
}
```

If you want to add a text shadow in that color use the text-shadow property, you can generate a text shadow directly with our [CSS Text Shadow Generator](#).

Here you see how black text with a 4 pixel #C7AFB7 colored shadow looks like.

```
.shadow{ text-shadow: 4px 4px 2px #C7AFB7
}
```

Border

The CSS property to change the border of an element to Hex C7AFB7 is called "border". The border property can be set on classes, ids or directly on the HTML element.

This example shows the color as border, it can be applied via the CSS property "border" or "border-color".

```
.border, #border, table{ border:4px solid
#C7AFB7 }
```

If only the border color should be changed use the property `border-color`.

```
.border{ border-color:#C7AFB7 }
```

If you want to add a box shadow in that color use:

Here you see how a box with a 4 pixel #C7AFB7 colored shadow looks like.

```
.boxshadow{ -moz-box-shadow:4px 4px 4px  
4px #C7AFB7; -webkit-box-shadow:4px 4px  
4px 4px #C7AFB7; box-shadow:4px 4px 4px  
4px #C7AFB7 }
```

Background

The CSS property to change the background color of an element to Hex C7AFB7 is called "background". The background property can be set on classes, ids or directly on the HTML element.

```
.background, #background, body{  
background:#C7AFB7 }
```

If only the background color should be changed can be used:

```
.background{ background-color:#C7AFB7 }
```

This example shows the color as background, it is applied via the CSS property "background".

To optimize and compress your CSS code, you can use our [online CSS compressor and optimizer](#) based on csstidy. If you want to create a linear or radial gradient as background or border, check our [CSS Gradient Generator](#).

Hey! You found this booklet interesting? Support Converting Colors with the new Membership Option!

The pro membership hides all ads, plus gives you double the colors in the color bucket, and more awesome pro features!

[Learn more, Memberships starting at \\$2.50/m!](#)

**Follow me
on Twitter!**

@ConvertingColor