

# Converting Colors

Hex(C7B0B7)

Have a look what the booklet for  
Hex(C7B0B7) contains.

<b>Hex(C7B0B7)</b> .....	3
<i><b>Conversions</b></i> .....	4
<i><b>Details</b></i> .....	6
<i><b>Harmonies</b></i> .....	11
<i><b>Previews</b></i> .....	23
<i><b>Color Blindness Simulation</b></i> .....	26
<i><b>CSS Examples</b></i> .....	29

# **Color**

**Hex(C7B0B7)**

# Conversions

## Conversions Part 1

Format	Color
Hex	C7B0B7
RGB	199, 176, 183
RGB Percent	78%, 69%, 72%
CMY	0.2196, 0.3098, 0.2824
CMYK	0.00, 0.12, 0.08, 0.22
HSL	342°, 17%, 74%
HSV	342°, 12%, 78%
XYZ	47.6258, 46.6117, 51.2866
YIQ	183.6750, 11.4610, 7.0530

# Conversions

## Conversions Part 2

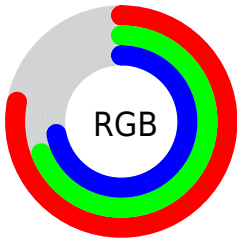
<b>Format</b>	<b>Color</b>
<b>R<sub>YB</sub></b>	199, 176, 183
Decimal	13086903
CIE Lab	73.94, 9.46, -0.54
CIE LCh	74, 9.475, 356.719
Yxy	46.6117, 0.3273, 0.3203
Android (android.graphics.Color)	4291276983 (0xFFC7B0B7)
YUV	183.6750, -0.3328, 13.4400
Hunter-Lab	68.2727, 5.0409, 3.2522

# Details

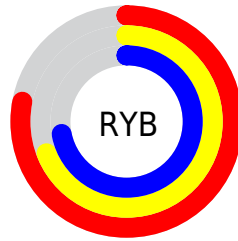
The Hex color **C7B0B7** is a light color, and the websafe version is hex **CCCCCC**. A complement of this color would be **B0C7C0**, and the grayscale version is **B8B8B8**.

A 20% lighter version of the original color is **FFE8EF**, and **917B82** is the 20% darker color. If you saturate the color by 10%, you get **C79CA9**, and if you desaturate by 10%, it is **C7C4C5**.

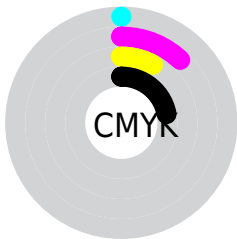
# Distribution



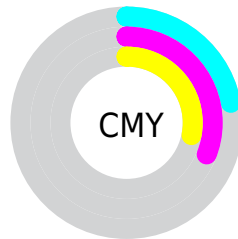
- Red (78%)
- Green (69%)
- Blue (72%)



- Red (78%)
- Yellow (69%)
- Blue (72%)



- Cyan (0%)
- Magenta (12%)
- Yellow (8%)
- Black (22%)



- Cyan (22%)
- Magenta (31%)
- Yellow (28%)

# Brightness & Saturation Gradients

These gradients show how the Hex color C7B0B7 changes by changing the brightness by 10 percent. The first figure shows a shift by +10% for each color and the second figure -10%.

Similar to the brightness gradients but the following saturation gradients show a change of the Hex color C7B0B7 by changing the saturation by 10% instead.



 C7B0B7

 C7B0B7

FFFFFF

 AC959C

 FFE8EF

 917B82

 776369

 5E4B51

 47343A

 301F24

 1C070F

 000000

 C7B0B7

 C7B0B7

 C79CA9

 C7C4C5

 C7889B

 C7D8D3

 C7748D

 C7ECE1

 C76080

 C7FFEE

 C74D72

 C7FFFC

 C73964

 C7FFFF

 C72556

 C71148

 C7003D

# Harmonies

## Analogous

The Analogous color harmony consists of three colors that are next to each other on the color wheel.



C0B1BF



C7B0B7



C9B0AE

# Triad

The Triadic color harmony groups three colors that are evenly spaced from another and form a triangle on the color wheel.



C7B0B7



B4B8A6



A3B9C4

# Complementary

The Complementary color scheme is a pair of colors which are on the opposite of each other on the color wheel.



C7B0B7



B0C7C0

# Split Complementary

Split-complementary colors differ from the complementary color scheme. The scheme consists of three colors, the original color and two neighbors of the complement color.



A0BBBD



C7B0B7



AABAAC

# Square

The Square scheme is like the rectangle color scheme, but the four colors are evenly spaced on the color wheel.



C7B0B7



BEB5A5



A3BBB4



ACB7C7

# Rectangle

The Rectangle color scheme consists of four colors that form a rectangle on the color wheel.



C7B0B7



C7B1A9



A3BBB4



A2BAC2

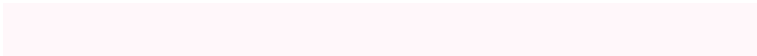


# Sweetspot

The Sweet Spot groups the original color and five complimentary colors.



C7B0B7



FFF7FA



C0B0C7



807A7C



000000



808080



# Same Dimension

The Same Dimension uses a secret algorithm to generate beautiful new colors.



C7B0B7



FFDBE6



C7B4B0



635A5D



A30032



24000B



# Inverse Universe

The Inverse Universe completely reimagines the original color for something new.



C7B0B7



FFDBE6



B0C3C7



635A5D



A30032

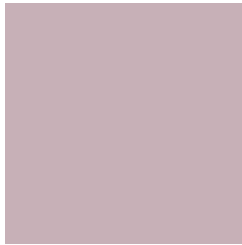


24000B



# Previews

## White Background



This preview shows how the Hex color C7B0B7 looks on a white background.

## Color Contrast Check

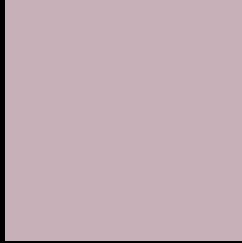
Large Text (above 18pt) WCAG AA × Fail

Any Text WCAG AA × Fail

Large Text (above 18pt) WCAG AAA × Fail

Any Text WCAG AAA × Fail

# Black Background



This preview shows how the Hex color C7B0B7 looks on a black background.

## Color Contrast Check

Large Text (above 18pt) WCAG AA ✓ Pass

Any Text WCAG AA ✓ Pass

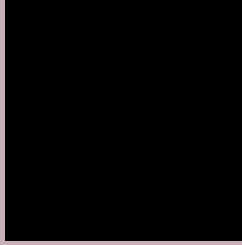
Large Text (above 18pt) WCAG AAA ✓ Pass

Any Text WCAG AAA ✓ Pass

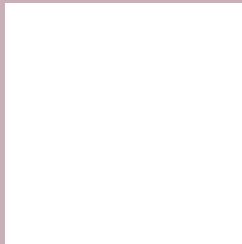
If you want to check with other color combinations, try the [Color Contrast Checker](#).



## Hex C7B0B7 Background



This preview shows how black text looks on a background with the Hex color C7B0B7.



This preview shows how white text looks on a background with the Hex color C7B0B7.

# Color Blindness Simulation

Color vision deficiency is a very complex topic, and I could not describe the different causes any better than Wikipedia does, so if you want to learn more, you should check out their [article about color blindness](#).

## Dichromacy





**Tritanopia**  
C8AFBD

# Trichromacy



**Original Color**  
C7B0B7

**Protanomaly**  
BDB3B9

**Deuteranomaly**  
C7B0B7

**Tritanomaly**  
C8AFBB

# Monochromacy



**Original Color**  
C7B0B7

**Achromatopsia**  
B8B8B8

**Achromatomaly**  
BDB5B8

# CSS Examples

## Text

The CSS property to change the color of the text to Hex C7B0B7 is called "color". The color property can be set on classes, ids or directly on the HTML element.

This example shows how text in the color #C7B0B7 looks like.

```
.text, #text, p{  
    color:#C7B0B7  
}
```

If you want to add a text shadow in that color use the text-shadow property, you can generate a text shadow directly with our [CSS Text Shadow Generator](#).

Here you see how black text with a 4 pixel #C7B0B7 colored shadow looks like.

```
.shadow{ text-shadow: 4px 4px 2px #C7B0B7
}
```

## Border

The CSS property to change the border of an element to Hex C7B0B7 is called "border". The border property can be set on classes, ids or directly on the HTML element.

This example shows the color as border, it can be applied via the CSS property "border" or "border-color".

```
.border, #border, table{ border:4px solid
#C7B0B7 }
```

If only the border color should be changed use the property `border-color`.

```
.border{ border-color:#C7B0B7 }
```

If you want to add a box shadow in that color use:

Here you see how a box with a 4 pixel #C7B0B7 colored shadow looks like.

```
.boxshadow{ -moz-box-shadow:4px 4px 4px  
4px #C7B0B7; -webkit-box-shadow:4px 4px  
4px 4px #C7B0B7; box-shadow:4px 4px 4px  
4px #C7B0B7 }
```

# Background

The CSS property to change the background color of an element to Hex C7B0B7 is called "background". The background property can be set on classes, ids or directly on the HTML element.

```
.background, #background, body{  
background:#C7B0B7 }
```

If only the background color should be changed can be used:

```
.background{ background-color:#C7B0B7 }
```

This example shows the color as background, it is applied via the CSS property "background".

To optimize and compress your CSS code, you can use our [online CSS compressor and optimizer](#) based on csstidy. If you want to create a linear or radial gradient as background or border, check our [CSS Gradient Generator](#).



Hey! You found this booklet interesting? Support Converting Colors with the new Membership Option!

The pro membership hides all ads, plus gives you double the colors in the color bucket, and more awesome pro features!

**[Learn more, Memberships starting at \\$2.50/m!](#)**

**Follow me  
on Twitter!**

@ConvertingColor