

Converting Colors

Hex(C7B2B3)

Have a look what the booklet for
Hex(C7B2B3) contains.

Hex(C7B2B3)	3
<i>Conversions</i>	4
<i>Details</i>	6
<i>Harmonies</i>	11
<i>Previews</i>	23
<i>Color Blindness Simulation</i>	26
<i>CSS Examples</i>	29

Color

Hex(C7B2B3)

Conversions

Conversions Part 1	
Format	Color
Hex	C7B2B3
RGB	199, 178, 179
RGB Percent	78%, 70%, 70%
CMY	0.2196, 0.3020, 0.2980
CMYK	0.00, 0.11, 0.10, 0.22
HSL	357°, 16%, 74%
HSV	357°, 11%, 78%
XYZ	47.6103, 47.2376, 49.2563
YIQ	184.3930, 12.1950, 4.7630

Conversions

Conversions Part 2

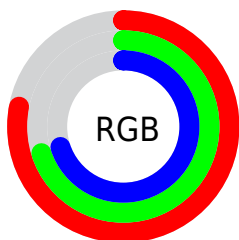
Format	Color
RYB	199, 178, 179
Decimal	13087411
CIELab	74.34, 7.69, 2.23
CIELCh	74, 8.006, 16.173
Yxy	47.2376, 0.3304, 0.3278
Android (android.graphics.Color)	4291277491 (0xFFC7B2B3)
YUV	184.3930, -2.6587, 12.8103
Hunter-Lab	68.7296, 3.3735, 5.6195

Details

The Hex color **C7B2B3** is a light color, and the websafe version is hex **CCCCCC**. A complement of this color would be **B2C7C6**, and the grayscale version is **B8B8B8**.

A 20% lighter version of the original color is **FFEAEB**, and **917D7E** is the 20% darker color. If you saturate the color by 10%, you get **C79EA0**, and if you desaturate by 10%, it is **C7C6C6**.

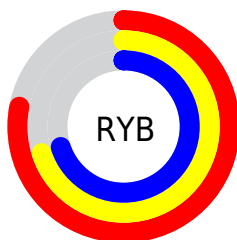
Distribution



Red (78%)

Green (70%)

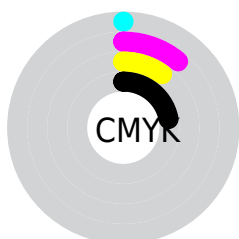
Blue (70%)



Red (78%)

Yellow (70%)

Blue (70%)

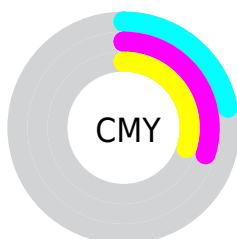


Cyan (0%)

Magenta (11%)

Yellow (10%)

Black (22%)



Cyan (22%)

Magenta (30%)

Yellow (30%)

Brightness & Saturation Gradients

These gradients show how the Hex color C7B2B3 changes by changing the brightness by 10 percent. The first figure shows a shift by +10% for each color and the second figure -10%.

Similar to the brightness gradients but the following saturation gradients show a change of the Hex color C7B2B3 by changing the saturation by 10% instead.

 C7B2B3

FFFFFF

 FFEAEB

 C7B2B3

 AC9798

 917D7E

 776465

 5E4C4D

 473637

 302021

 1C0A0B

 000000

 C7B2B3

 C7B2B3

 C79EA0

 C7C6C6

 C78A8D

 C7DAD9

 C7767A

 C7EEEE

 C76267

 C7FFFF

 C74F54

 C73B41

 C7272E

 C7131B

 C70009

Harmonies

Analogous

The Analogous color harmony consists of three colors that are next to each other on the color wheel.



C4B2BB



C7B2B3



C6B3AC

Triad

The Triadic color harmony groups three colors that are evenly spaced from another and form a triangle on the color wheel.



C7B2B3



B0BAAC



ACB8C5

Complementary

The Complementary color scheme is a pair of colors which are on the opposite of each other on the color wheel.



C7B2B3



B2C7C6

Split Complementary

Split-complementary colors differ from the complementary color scheme. The scheme consists of three colors, the original color and two neighbors of the complement color.



A6BAC1



C7B2B3



A9BBB3

Square

The Square scheme is like the rectangle color scheme, but the four colors are evenly spaced on the color wheel.



C7B2B3



B9B8A9



A5BBBB



B4B6C5

Rectangle

The Rectangle color scheme consists of four colors that form a rectangle on the color wheel.



C7B2B3



C3B4AA



A5BBBB



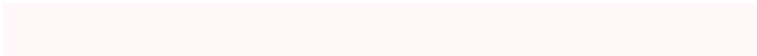
A9B9C4

Sweetspot

The Sweet Spot groups the original color and five complimentary colors.



C7B2B3



FFF7F8



C6B2C7



807A7B



000000



808080

Same Dimension

The Same Dimension uses a secret algorithm to generate beautiful new colors.



C7B2B3



FFDEDF



C7BBB2



635A5A



A30008



240002

Inverse Universe

The Inverse Universe completely reimagines the original color for something new.



C7B2B3



FFDEDF



B2BEC7



635A5A



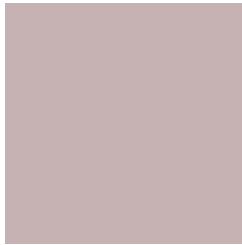
A30008



240002

Previews

White Background



This preview shows how the Hex color C7B2B3 looks on a white background.

Color Contrast Check

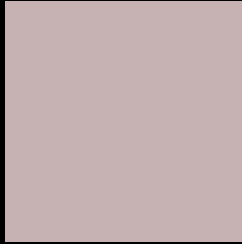
Large Text (above 18pt) WCAG AA × Fail

Any Text WCAG AA × Fail

Large Text (above 18pt) WCAG AAA × Fail

Any Text WCAG AAA × Fail

Black Background



This preview shows how the Hex color C7B2B3 looks on a black background.

Color Contrast Check

Large Text (above 18pt) WCAG AA ✓ Pass

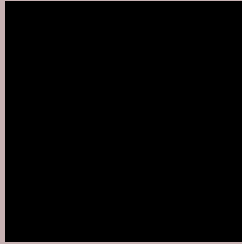
Any Text WCAG AA ✓ Pass

Large Text (above 18pt) WCAG AAA ✓ Pass

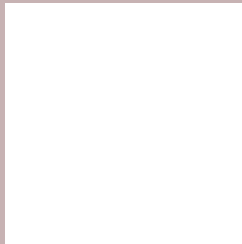
Any Text WCAG AAA ✓ Pass

If you want to check with other color combinations, try the [Color Contrast Checker](#).

Hex C7B2B3 Background



This preview shows how black text looks on a background with the Hex color C7B2B3.



This preview shows how white text looks on a background with the Hex color C7B2B3.

Color Blindness Simulation

Color vision deficiency is a very complex topic, and I could not describe the different causes any better than Wikipedia does, so if you want to learn more, you should check out their [article about color blindness](#).

Dichromacy



Original Color

C7B2B3

Protanopia

BAB6B5

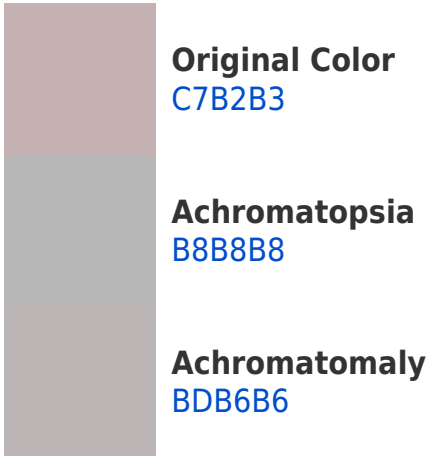
Deuteranopia

CAB1B3

Trichromacy



Monochromacy



CSS Examples

Text

The CSS property to change the color of the text to Hex C7B2B3 is called "color". The color property can be set on classes, ids or directly on the HTML element.

This example shows how text in the color #C7B2B3 looks like.

```
.text, #text, p{  
    color:#C7B2B3  
}
```

If you want to add a text shadow in that color use the text-shadow property, you can generate a text shadow directly with our [CSS Text Shadow Generator](#).

Here you see how black text with a 4 pixel #C7B2B3 colored shadow looks like.

```
.shadow{ text-shadow: 4px 4px 2px #C7B2B3
}
```

Border

The CSS property to change the border of an element to Hex C7B2B3 is called "border". The border property can be set on classes, ids or directly on the HTML element.

This example shows the color as border, it can be applied via the CSS property "border" or "border-color".

```
.border, #border, table{ border:4px solid
#C7B2B3 }
```

If only the border color should be changed use the property border-color.

```
.border{ border-color:#C7B2B3 }
```

If you want to add a box shadow in that color use:

Here you see how a box with a 4 pixel #C7B2B3 colored shadow looks like.

```
.boxshadow{ -moz-box-shadow:4px 4px 4px  
4px #C7B2B3; -webkit-box-shadow:4px 4px  
4px 4px #C7B2B3; box-shadow:4px 4px 4px  
4px #C7B2B3 }
```

Background

The CSS property to change the background color of an element to Hex C7B2B3 is called "background". The background property can be set on classes, ids or directly on the HTML element.

```
.background, #background, body{  
background:#C7B2B3 }
```

If only the background color should be changed can be used:

```
.background{ background-color:#C7B2B3 }
```

This example shows the color as background, it is applied via the CSS property "background".

To optimize and compress your CSS code, you can use our [online CSS compressor and optimizer](#) based on csstidy. If you want to create a linear or radial gradient as background or border, check our [CSS Gradient Generator](#).

Hey! You found this booklet
interesting? Support Converting
Colors with the new Membership
Option!

The pro membership hides all ads, plus gives you
double the colors in the color bucket, and more
awesome pro features!

[Learn more, Memberships starting at \\$2.50/m!](#)

**Follow me
on Twitter!**

@ConvertingColor