

# Converting Colors

Hex(C7B3B2)

Have a look what the booklet for  
Hex(C7B3B2) contains.

<b>Hex(C7B3B2)</b> .....	3
<i><b>Conversions</b></i> .....	4
<i><b>Details</b></i> .....	6
<i><b>Harmonies</b></i> .....	11
<i><b>Previews</b></i> .....	23
<i><b>Color Blindness Simulation</b></i> .....	26
<i><b>CSS Examples</b></i> .....	29

# **Color**

**Hex(C7B3B2)**

# Conversions

## Conversions Part 1

Format	Color
Hex	C7B3B2
RGB	199, 179, 178
RGB Percent	78%, 70%, 70%
CMY	0.2196, 0.2980, 0.3020
CMYK	0.00, 0.10, 0.11, 0.22
HSL	3°, 16%, 74%
HSV	3°, 11%, 78%
XYZ	47.7092, 47.5967, 48.7920
YIQ	184.8660, 12.2410, 3.9290

# Conversions

## Conversions Part 2

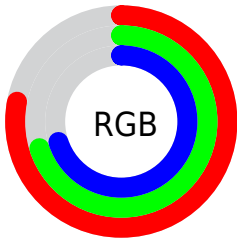
<b>Format</b>	<b>Color</b>
<b>RYB</b>	199, 179, 178
Decimal	13087666
CIELab	74.57, 6.98, 3.11
CIElCh	75, 7.640, 24.000
Yxy	47.5967, 0.3311, 0.3303
Android (android.graphics.Color)	4291277746 (0xFFC7B3B2)
YUV	184.8660, -3.3849, 12.3955
Hunter-Lab	68.9903, 2.7057, 6.3616

# Details

The Hex color **C7B3B2** is a light color, and the websafe version is hex **CCCCCC**. A complement of this color would be **B2C6C7**, and the grayscale version is **B9B9B9**.

A 20% lighter version of the original color is **FFEBEA**, and **917E7D** is the 20% darker color. If you saturate the color by 10%, you get **C7A09E**, and if you desaturate by 10%, it is **C7C6C6**.

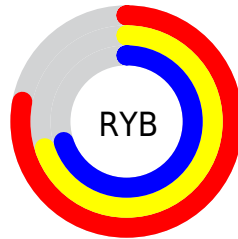
# Distribution



Red (78%)

Green (70%)

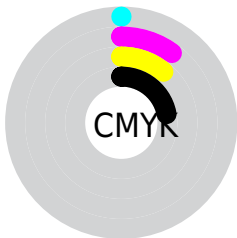
Blue (70%)



Red (78%)

Yellow (70%)

Blue (70%)

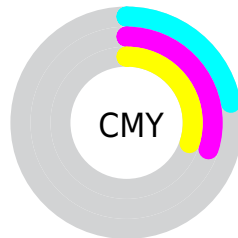


Cyan (0%)

Magenta (10%)

Yellow (11%)

Black (22%)



Cyan (22%)

Magenta (30%)

Yellow (30%)

# Brightness & Saturation Gradients

These gradients show how the Hex color C7B3B2 changes by changing the brightness by 10 percent. The first figure shows a shift by +10% for each color and the second figure -10%.

Similar to the brightness gradients but the following saturation gradients show a change of the Hex color C7B3B2 by changing the saturation by 10% instead.



 C7B3B2

 C7B3B2

FFFFFF

 AC9897

 FFEBEA

 917E7D

 776564

 5E4D4D

 473736

 302121

 1C0B09

 000000

 C7B3B2

 C7B3B2

 C7A09E

 C7C6C6

 C78D8A

 C7D9DA

 C77A76

 C7ECEE

 C76762

 C7FFFF

 C7544F

 C7413B

 C72E27

 C71B13

 C70900

# Harmonies

## Analogous

The Analogous color harmony consists of three colors that are next to each other on the color wheel.



C5B3B9



C7B3B2



C5B4AC

# Triad

The Triadic color harmony groups three colors that are evenly spaced from another and form a triangle on the color wheel.



C7B3B2



AFBBAF



AFB8C5

# Complementary

The Complementary color scheme is a pair of colors which are on the opposite of each other on the color wheel.



C7B3B2



B2C6C7

# Split Complementary

Split-complementary colors differ from the complementary color scheme. The scheme consists of three colors, the original color and two neighbors of the complement color.



A8BAC3



C7B3B2



A9BCB6

# Square

The Square scheme is like the rectangle color scheme, but the four colors are evenly spaced on the color wheel.



C7B3B2



B7B9AB



A6BCBD



B7B6C4

# Rectangle

The Rectangle color scheme consists of four colors that form a rectangle on the color wheel.



C7B3B2



C1B6AA



A6BCBD



ACB9C5

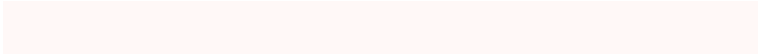


# Sweetspot

The Sweet Spot groups the original color and five complimentary colors.



C7B3B2



FFF8F7



C7B2C6



807B7A



000000



808080

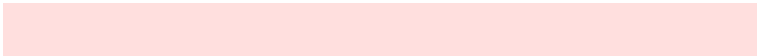


# Same Dimension

The Same Dimension uses a secret algorithm to generate beautiful new colors.



C7B3B2



FFDFDE



C7BDB2



635A5A



A30800



240200



# Inverse Universe

The Inverse Universe completely reimagines the original color for something new.



B2C6C7



DEFDFE



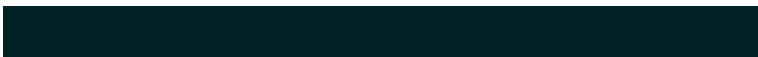
B2BCC7



5A6363



009BA3

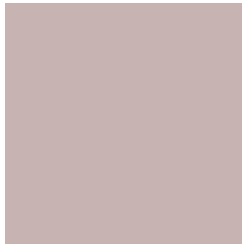


002224



# Previews

## White Background



This preview shows how the Hex color C7B3B2 looks on a white background.

## Color Contrast Check

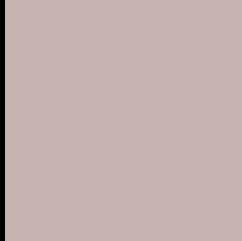
Large Text (above 18pt) WCAG AA × Fail

Any Text WCAG AA × Fail

Large Text (above 18pt) WCAG AAA × Fail

Any Text WCAG AAA × Fail

# Black Background



This preview shows how the Hex color C7B3B2 looks on a black background.

## Color Contrast Check

Large Text (above 18pt) WCAG AA ✓ Pass

Any Text WCAG AA ✓ Pass

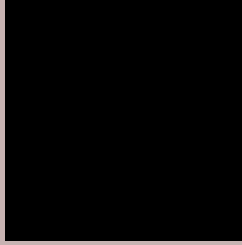
Large Text (above 18pt) WCAG AAA ✓ Pass

Any Text WCAG AAA ✓ Pass

If you want to check with other color combinations, try the [Color Contrast Checker](#).



## Hex C7B3B2 Background



This preview shows how black text looks on a background with the Hex color C7B3B2.



This preview shows how white text looks on a background with the Hex color C7B3B2.

# Color Blindness Simulation

Color vision deficiency is a very complex topic, and I could not describe the different causes any better than Wikipedia does, so if you want to learn more, you should check out their [article about color blindness](#).

## Dichromacy





**Tritanopia**  
C9B1BF

# Trichromacy



**Original Color**  
C7B3B2

**Protanomaly**  
C0B6B3

**Deuteranomaly**  
CAB2B2

**Tritanomaly**  
C8B2BA

# Monochromacy



**Original Color**  
C7B3B2

**Achromatopsia**  
B9B9B9

**Achromatomaly**  
BEB7B6

# CSS Examples

## Text

The CSS property to change the color of the text to Hex C7B3B2 is called "color". The color property can be set on classes, ids or directly on the HTML element.

This example shows how text in the color #C7B3B2 looks like.

```
.text, #text, p{  
    color:#C7B3B2  
}
```

If you want to add a text shadow in that color use the text-shadow property, you can generate a text shadow directly with our [CSS Text Shadow Generator](#).

Here you see how black text with a 4 pixel #C7B3B2 colored shadow looks like.

```
.shadow{ text-shadow: 4px 4px 2px #C7B3B2
}
```

## Border

The CSS property to change the border of an element to Hex C7B3B2 is called "border". The border property can be set on classes, ids or directly on the HTML element.

This example shows the color as border, it can be applied via the CSS property "border" or "border-color".

```
.border, #border, table{ border:4px solid
#C7B3B2 }
```

If only the border color should be changed use the property `border-color`.

```
.border{ border-color:#C7B3B2 }
```

If you want to add a box shadow in that color use:

Here you see how a box with a 4 pixel #C7B3B2 colored shadow looks like.

```
.boxshadow{ -moz-box-shadow:4px 4px 4px  
4px #C7B3B2; -webkit-box-shadow:4px 4px  
4px 4px #C7B3B2; box-shadow:4px 4px 4px  
4px #C7B3B2 }
```

# Background

The CSS property to change the background color of an element to Hex C7B3B2 is called "background". The background property can be set on classes, ids or directly on the HTML element.

```
.background, #background, body{  
background:#C7B3B2 }
```

If only the background color should be changed can be used:

```
.background{ background-color:#C7B3B2 }
```

This example shows the color as background, it is applied via the CSS property "background".

To optimize and compress your CSS code, you can use our [online CSS compressor and optimizer](#) based on csstidy. If you want to create a linear or radial gradient as background or border, check our [CSS Gradient Generator](#).



Hey! You found this booklet interesting? Support Converting Colors with the new Membership Option!

The pro membership hides all ads, plus gives you double the colors in the color bucket, and more awesome pro features!

**[Learn more, Memberships starting at \\$2.50/m!](#)**

**Follow me  
on Twitter!**

@ConvertingColor