

Converting Colors

Hex(C7B6B5)

Have a look what the booklet for
Hex(C7B6B5) contains.

Hex(C7B6B5)	3
<i>Conversions</i>	4
<i>Details</i>	6
<i>Harmonies</i>	11
<i>Previews</i>	23
<i>Color Blindness Simulation</i>	26
<i>CSS Examples</i>	29

Color

Hex(C7B6B5)

Conversions

Conversions Part 1

Format	Color
Hex	C7B6B5
RGB	199, 182, 181
RGB Percent	78%, 71%, 71%
CMY	0.2196, 0.2863, 0.2902
CMYK	0.00, 0.09, 0.09, 0.22
HSL	3°, 14%, 75%
HSV	3°, 9%, 78%
XYZ	48.6216, 48.9342, 50.5987
YIQ	186.9690, 10.4530, 3.2930

Conversions

Conversions Part 2

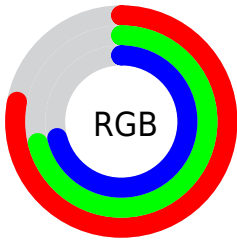
Format	Color
RYB	199, 182, 181
Decimal	13088437
CIELab	75.41, 5.87, 2.69
CIElCh	75, 6.460, 24.611
Yxy	48.9342, 0.3282, 0.3303
Android (android.graphics.Color)	4291278517 (0xFFC7B6B5)
YUV	186.9690, -2.9427, 10.5512
Hunter-Lab	69.9530, 1.6507, 6.0812

Details

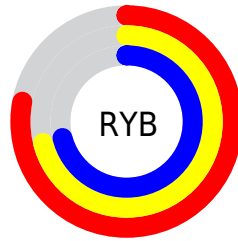
The Hex color **C7B6B5** is a light color, and the websafe version is hex **CCCCCC**. A complement of this color would be **B5C6C7**, and the grayscale version is **BBBBBB**.

A 20% lighter version of the original color is **FFEEED**, and **918180** is the 20% darker color. If you saturate the color by 10%, you get **C7A3A1**, and if you desaturate by 10%, it is **C7C9C9**.

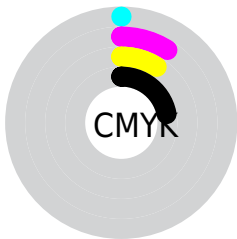
Distribution



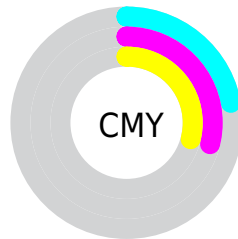
- Red (78%)
- Green (71%)
- Blue (71%)



- Red (78%)
- Yellow (71%)
- Blue (71%)



- Cyan (0%)
- Magenta (9%)
- Yellow (9%)
- Black (22%)



- Cyan (22%)
- Magenta (29%)
- Yellow (29%)

Brightness & Saturation Gradients

These gradients show how the Hex color C7B6B5 changes by changing the brightness by 10 percent. The first figure shows a shift by +10% for each color and the second figure -10%.

Similar to the brightness gradients but the following saturation gradients show a change of the Hex color C7B6B5 by changing the saturation by 10% instead.

 C7B6B5

 C7B6B5

FFFFFF

 AC9B9A

 FFEEED

 918180

 776867

 5E504F

 473938

 302423

 1C0E0D

 000000

 C7B6B5

 C7B6B5

 C7A3A1

 C7C9C9

 C7908D

 C7DCDD

 C77E79

 C7EEF1

 C76B65

 C7FFFF

 C75852

 C7453E

 C7322A

 C72016

 C70D02

Harmonies

Analogous

The Analogous color harmony consists of three colors that are next to each other on the color wheel.



C5B6BB



C7B6B5



C5B7B0

Triad

The Triadic color harmony groups three colors that are evenly spaced from another and form a triangle on the color wheel.



C7B6B5



B3BCB3



B3BBC5

Complementary

The Complementary color scheme is a pair of colors which are on the opposite of each other on the color wheel.



C7B6B5



B5C6C7

Split Complementary

Split-complementary colors differ from the complementary color scheme. The scheme consists of three colors, the original color and two neighbors of the complement color.



ADBCC3



C7B6B5



ADBDB8

Square

The Square scheme is like the rectangle color scheme, but the four colors are evenly spaced on the color wheel.



C7B6B5



B9BBAF



ABBDBE



BAB9C4

Rectangle

The Rectangle color scheme consists of four colors that form a rectangle on the color wheel.



C7B6B5



C2B8AE



ABDBE



B1BBC5

Sweetspot

The Sweet Spot groups the original color and five complimentary colors.



C7B6B5



FFF8F7



C7B5C6



807B7A



000000



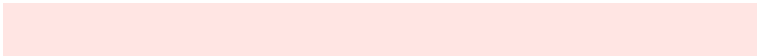
808080

Same Dimension

The Same Dimension uses a secret algorithm to generate beautiful new colors.



C7B6B5



FFE5E3



C7BFB5



635A5A



A30900



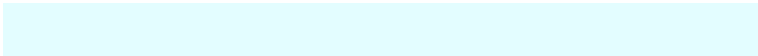
240200

Inverse Universe

The Inverse Universe completely reimagines the original color for something new.



B5C6C7



E3FDFD



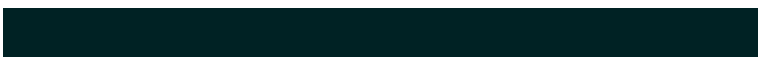
B5BDC7



5A6363



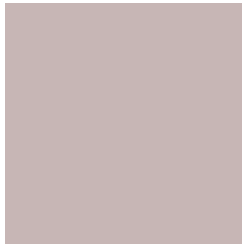
009AA3



002224

Previews

White Background



This preview shows how the Hex color C7B6B5 looks on a white background.

Color Contrast Check

Large Text (above 18pt) WCAG AA × Fail

Any Text WCAG AA × Fail

Large Text (above 18pt) WCAG AAA × Fail

Any Text WCAG AAA × Fail

Black Background



This preview shows how the Hex color C7B6B5 looks on a black background.

Color Contrast Check

Large Text (above 18pt) WCAG AA ✓ Pass

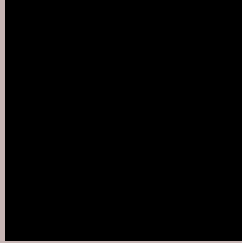
Any Text WCAG AA ✓ Pass

Large Text (above 18pt) WCAG AAA ✓ Pass

Any Text WCAG AAA ✓ Pass

If you want to check with other color combinations, try the [Color Contrast Checker](#).

Hex C7B6B5 Background



This preview shows how black text looks on a background with the Hex color C7B6B5.



This preview shows how white text looks on a background with the Hex color C7B6B5.

Color Blindness Simulation

Color vision deficiency is a very complex topic, and I could not describe the different causes any better than Wikipedia does, so if you want to learn more, you should check out their [article about color blindness](#).

Dichromacy





Tritanopia
C9B4C2

Trichromacy



Original Color
C7B6B5

Protanomaly
C1B8B6

Deuteranomaly
CBB5B5

Tritanomaly
C8B5BD

Monochromacy



Original Color
C7B6B5

Achromatopsia
BBBBBB

Achromatomaly
BFB9B9

CSS Examples

Text

The CSS property to change the color of the text to Hex C7B6B5 is called "color". The color property can be set on classes, ids or directly on the HTML element.

This example shows how text in the color #C7B6B5 looks like.

```
.text, #text, p{  
    color:#C7B6B5  
}
```

If you want to add a text shadow in that color use the text-shadow property, you can generate a text shadow directly with our [CSS Text Shadow Generator](#).

Here you see how black text with a 4 pixel #C7B6B5 colored shadow looks like.

```
.shadow{ text-shadow: 4px 4px 2px #C7B6B5  
}
```

Border

The CSS property to change the border of an element to Hex C7B6B5 is called "border". The border property can be set on classes, ids or directly on the HTML element.

This example shows the color as border, it can be applied via the CSS property "border" or "border-color".

```
.border, #border, table{ border:4px solid  
#C7B6B5 }
```

If only the border color should be changed use the property `border-color`.

```
.border{ border-color:#C7B6B5 }
```

If you want to add a box shadow in that color use:

Here you see how a box with a 4 pixel #C7B6B5 colored shadow looks like.

```
.boxshadow{ -moz-box-shadow:4px 4px 4px  
4px #C7B6B5; -webkit-box-shadow:4px 4px  
4px 4px #C7B6B5; box-shadow:4px 4px 4px  
4px #C7B6B5 }
```

Background

The CSS property to change the background color of an element to Hex C7B6B5 is called "background". The background property can be set on classes, ids or directly on the HTML element.

```
.background, #background, body{  
background:#C7B6B5 }
```

If only the background color should be changed can be used:

```
.background{ background-color:#C7B6B5 }
```

This example shows the color as background, it is applied via the CSS property "background".

To optimize and compress your CSS code, you can use our [online CSS compressor and optimizer](#) based on csstidy. If you want to create a linear or radial gradient as background or border, check our [CSS Gradient Generator](#).

Hey! You found this booklet interesting? Support Converting Colors with the new Membership Option!

The pro membership hides all ads, plus gives you double the colors in the color bucket, and more awesome pro features!

[Learn more, Memberships starting at \\$2.50/m!](#)

**Follow me
on Twitter!**

@ConvertingColor