

# Converting Colors

Hex(C7B7B7)

Have a look what the booklet for  
Hex(C7B7B7) contains.

|  |    |
|--|----|
| <b>Hex(C7B7B7)</b> .....                       | 3  |
| <b><i>Conversions</i></b> .....                | 4  |
| <b><i>Details</i></b> .....                    | 6  |
| <b><i>Harmonies</i></b> .....                  | 11 |
| <b><i>Previews</i></b> .....                   | 23 |
| <b><i>Color Blindness Simulation</i></b> ..... | 26 |
| <b><i>CSS Examples</i></b> .....               | 29 |

# **Color**

**Hex(C7B7B7)**

# Conversions

## Conversions Part 1

| <b>Format</b> | <b>Color</b>              |
|---------------|---------------------------|
| Hex           | C7B7B7                    |
| RGB           | 199, 183, 183             |
| RGB Percent   | 78%, 72%, 72%             |
| CMY           | 0.2196, 0.2824, 0.2824    |
| CMYK          | 0.00, 0.08, 0.08, 0.22    |
| HSL           | 0°, 12%, 75%              |
| HSV           | 0°, 8%, 78%               |
| XYZ           | 49.0339, 49.4280, 51.7559 |
| YIQ           | 187.7840, 9.5360, 3.3920  |

# Conversions

## Conversions Part 2

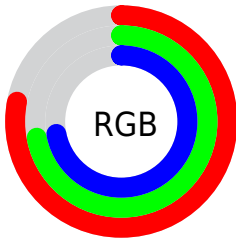
| <b>Format</b>                       | <b>Color</b>                 |
|-------------------------------------|------------------------------|
| <b>RYB</b>                          | 199, 183, 183                |
| Decimal                             | 13088695                     |
| CIELab                              | 75.72, 5.68, 2.05            |
| CIElCh                              | 76, 6.037, 19.816            |
| Yxy                                 | 49.4280, 0.3264,<br>0.3290   |
| Android<br>(android.graphics.Color) | 4291278775<br>(0xFFC7B7B7)   |
| YUV                                 | 187.7840, -2.3585,<br>9.8364 |
| Hunter-Lab                          | 70.3050, 1.4602,<br>5.5665   |

# Details

The Hex color **C7B7B7** is a light color, and the websafe version is hex **CCCCCC**. A complement of this color would be **B7C7C7**, and the grayscale version is **BCBCBC**.

A 20% lighter version of the original color is **FFEFEF**, and **918282** is the 20% darker color. If you saturate the color by 10%, you get **C7A3A3**, and if you desaturate by 10%, it is **C7CBCB**.

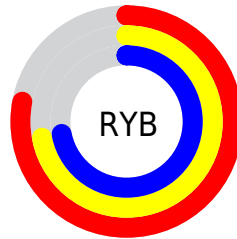
# Distribution



Red (78%)

Green (72%)

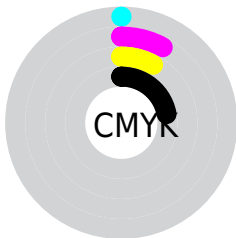
Blue (72%)



Red (78%)

Yellow (72%)

Blue (72%)

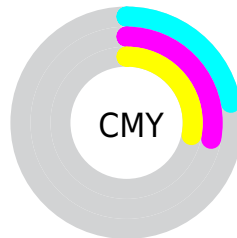


Cyan (0%)

Magenta (8%)

Yellow (8%)

Black (22%)



Cyan (22%)

Magenta (28%)

Yellow (28%)

# Brightness & Saturation Gradients

These gradients show how the Hex color C7B7B7 changes by changing the brightness by 10 percent. The first figure shows a shift by +10% for each color and the second figure -10%.

Similar to the brightness gradients but the following saturation gradients show a change of the Hex color C7B7B7 by changing the saturation by 10% instead.



 C7B7B7

 C7B7B7

FFFFFF

 AC9C9C

 FFEFEF

 918282

 776969

 5F5151

 473A3A

 302424

 1C0F0F

 000000

 C7B7B7

 C7B7B7

 C7A3A3

 C7CBCB

 C78F8F

 C7DFDF

 C77B7B

 C7F3F3

 C76767

 C7FFFF

 C75454

 C74040

 C72C2C

 C71818

 C70404

# Harmonies

## Analogous

The Analogous color harmony consists of three colors that are next to each other on the color wheel.



C5B7BD



C7B7B7



C6B8B2

# Triad

The Triadic color harmony groups three colors that are evenly spaced from another and form a triangle on the color wheel.



C7B7B7



B5DBB3



B3BCC5

# Complementary

The Complementary color scheme is a pair of colors which are on the opposite of each other on the color wheel.



C7B7B7



B7C7C7

# Split Complementary

Split-complementary colors differ from the complementary color scheme. The scheme consists of three colors, the original color and two neighbors of the complement color.



AEBDC3



C7B7B7



B0BEB8

# Square

The Square scheme is like the rectangle color scheme, but the four colors are evenly spaced on the color wheel.



C7B7B7



BBBB0



ADBEBE



BABAC5

# Rectangle

The Rectangle color scheme consists of four colors that form a rectangle on the color wheel.



C7B7B7



C3B9B0



ADBEBE



B1BCC5



# Sweetspot

The Sweet Spot groups the original color and five complimentary colors.



C7B7B7



FFFAFA



C7B7C7



807D7D



000000



808080



# Same Dimension

The Same Dimension uses a secret algorithm to generate beautiful new colors.



C7B7B7



FFE6E6



C7BFB7



635A5A



A30000



240000

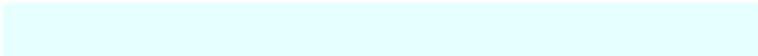


# Inverse Universe

The Inverse Universe completely reimagines the original color for something new.



B7C7C7



E6FFFF



B7BFC7



5A6363



00A3A3

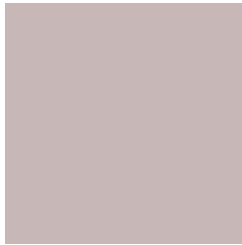


002424



# Previews

## White Background



This preview shows how the Hex color C7B7B7 looks on a white background.

## Color Contrast Check

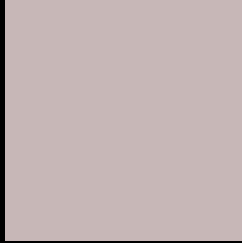
Large Text (above 18pt) WCAG AA × Fail

Any Text WCAG AA × Fail

Large Text (above 18pt) WCAG AAA × Fail

Any Text WCAG AAA × Fail

# Black Background



This preview shows how the Hex color C7B7B7 looks on a black background.

## Color Contrast Check

Large Text (above 18pt) WCAG AA ✓ Pass

Any Text WCAG AA ✓ Pass

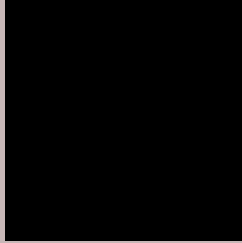
Large Text (above 18pt) WCAG AAA ✓ Pass

Any Text WCAG AAA ✓ Pass

If you want to check with other color combinations, try the [Color Contrast Checker](#).



## Hex C7B7B7 Background



This preview shows how black text looks on a background with the Hex color C7B7B7.



This preview shows how white text looks on a background with the Hex color C7B7B7.

# Color Blindness Simulation

Color vision deficiency is a very complex topic, and I could not describe the different causes any better than Wikipedia does, so if you want to learn more, you should check out their [article about color blindness](#).

## Dichromacy



**Original Color**  
C7B7B7

**Protanopia**  
BEBAB9

**Deuteranopia**  
CEB5B7



**Tritanopia**  
C9B5C3

# Trichromacy



**Original Color**  
C7B7B7

**Protanomaly**  
C1B9B8

**Deuteranomaly**  
CBB6B7

**Tritanomaly**  
C8B6BF

# Monochromacy



**Original Color**  
C7B7B7

**Achromatopsia**  
BCBCBC

**Achromatomaly**  
C0BABA

# CSS Examples

## Text

The CSS property to change the color of the text to Hex C7B7B7 is called "color". The color property can be set on classes, ids or directly on the HTML element.

This example shows how text in the color #C7B7B7 looks like.

```
.text, #text, p{  
    color:#C7B7B7  
}
```

If you want to add a text shadow in that color use the text-shadow property, you can generate a text shadow directly with our [CSS Text Shadow Generator](#).

Here you see how black text with a 4 pixel #C7B7B7 colored shadow looks like.

```
.shadow{ text-shadow: 4px 4px 2px #C7B7B7
}
```

## Border

The CSS property to change the border of an element to Hex C7B7B7 is called "border". The border property can be set on classes, ids or directly on the HTML element.

This example shows the color as border, it can be applied via the CSS property "border" or "border-color".

```
.border, #border, table{ border:4px solid
#C7B7B7 }
```

If only the border color should be changed use the property `border-color`.

```
.border{ border-color:#C7B7B7 }
```

If you want to add a box shadow in that color use:

Here you see how a box with a 4 pixel #C7B7B7 colored shadow looks like.

```
.boxshadow{ -moz-box-shadow:4px 4px 4px  
4px #C7B7B7; -webkit-box-shadow:4px 4px  
4px 4px #C7B7B7; box-shadow:4px 4px 4px  
4px #C7B7B7 }
```

# Background

The CSS property to change the background color of an element to Hex C7B7B7 is called "background". The background property can be set on classes, ids or directly on the HTML element.

```
.background, #background, body{  
background:#C7B7B7 }
```

If only the background color should be changed can be used:

```
.background{ background-color:#C7B7B7 }
```

This example shows the color as background, it is applied via the CSS property "background".

To optimize and compress your CSS code, you can use our [online CSS compressor and optimizer](#) based on csstidy. If you want to create a linear or radial gradient as background or border, check our [CSS Gradient Generator](#).



Hey! You found this booklet interesting? Support Converting Colors with the new Membership Option!

The pro membership hides all ads, plus gives you double the colors in the color bucket, and more awesome pro features!

**[Learn more, Memberships starting at \\$2.50/m!](#)**

**Follow me  
on Twitter!**

@ConvertingColor