

# Converting Colors

Hex(C7BBB7)

Have a look what the booklet for  
Hex(C7BBB7) contains.

<b>Hex(C7BBB7)</b> .....	3
<i><b>Conversions</b></i> .....	4
<i><b>Details</b></i> .....	6
<i><b>Harmonies</b></i> .....	11
<i><b>Previews</b></i> .....	23
<i><b>Color Blindness Simulation</b></i> .....	26
<i><b>CSS Examples</b></i> .....	29

# **Color**

**Hex(C7BBB7)**

# Conversions

## Conversions Part 1

<b>Format</b>	<b>Color</b>
Hex	C7BBB7
RGB	199, 187, 183
RGB Percent	78%, 73%, 72%
CMY	0.2196, 0.2667, 0.2824
CMYK	0.00, 0.06, 0.08, 0.22
HSL	15°, 12%, 75%
HSV	15°, 8%, 78%
XYZ	49.8708, 51.1017, 52.0349
YIQ	190.1320, 8.4360, 1.3000

# Conversions

## Conversions Part 2

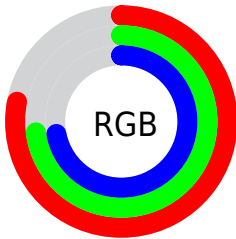
Format	Color
<a href="#">RYB</a>	<a href="#">199, 188, 183</a>
Decimal	<a href="#">13089719</a>
CIELab	<a href="#">76.74, 3.54, 3.53</a>
CIElCh	<a href="#">77, 4.997, 44.970</a>
Yxy	<a href="#">51.1017, 0.3259, 0.3340</a>
Android (android.graphics.Color)	<a href="#">4291279799</a> ( <a href="#">0xFFC7BBB7</a> )
YUV	<a href="#">190.1320, -3.5161, 7.7772</a>
Hunter-Lab	<a href="#">71.4854, -0.5716, 6.8821</a>

# Details

The Hex color **C7BBB7** is a light color, and the websafe version is hex **CCCCCC**. A complement of this color would be **B7C3C7**, and the grayscale version is **BEBEBE**.

A 20% lighter version of the original color is **FFF3EF**, and **918682** is the 20% darker color. If you saturate the color by 10%, you get **C7ACA3**, and if you desaturate by 10%, it is **C7CACB**.

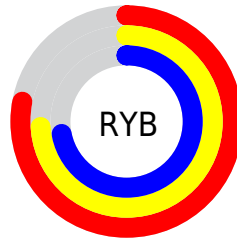
# Distribution



Red (78%)

Green (73%)

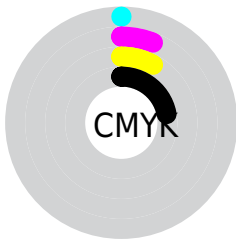
Blue (72%)



Red (78%)

Yellow (74%)

Blue (72%)

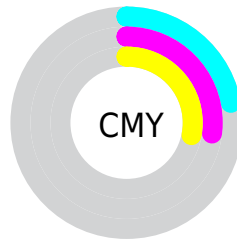


Cyan (0%)

Magenta (6%)

Yellow (8%)

Black (22%)



Cyan (22%)

Magenta (27%)

Yellow (28%)

# Brightness & Saturation Gradients

These gradients show how the Hex color C7BBB7 changes by changing the brightness by 10 percent. The first figure shows a shift by +10% for each color and the second figure -10%.

Similar to the brightness gradients but the following saturation gradients show a change of the Hex color C7BBB7 by changing the saturation by 10% instead.



 C7BBB7

 C7BBB7

FFFFFF

 ACA09C

 FFF3EF

 918682

 776D69

 5F5451

 473D3A

 302724

 1C130F

 000000

 C7BBB7

 C7BBB7

 C7ACA3

 C7CACB

 C79D8F

 C7D9DF

 C78E7B

 C7E8F3

 C77F67

 C7F7FF

 C77054

 C7FFFF

 C76140

 C7532C

 C74418

 C73504

# Harmonies

## Analogous

The Analogous color harmony consists of three colors that are next to each other on the color wheel.



C8BABB



C7BBB7



C4BCB5

# Triad

The Triadic color harmony groups three colors that are evenly spaced from another and form a triangle on the color wheel.



C7BBB7



B5C0BB



BCBDC6

# Complementary

The Complementary color scheme is a pair of colors which are on the opposite of each other on the color wheel.



C7BBB7



B7C3C7

# Split Complementary

Split-complementary colors differ from the complementary color scheme. The scheme consists of three colors, the original color and two neighbors of the complement color.



B6BEC6



C7BBB7



B2C0C0

# Square

The Square scheme is like the rectangle color scheme, but the four colors are evenly spaced on the color wheel.



C7BBB7



B9BFB7



B3C0C4



C1BCC4

# Rectangle

The Rectangle color scheme consists of four colors that form a rectangle on the color wheel.



C7BBB7



C1BDB4



B3C0C4



BABDC6

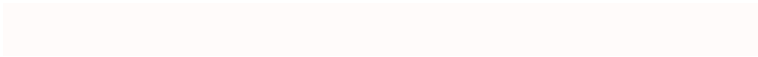


# Sweetspot

The Sweet Spot groups the original color and five complimentary colors.



C7BBB7



FFBFBA



C7B7C3



807E7D



000000



808080

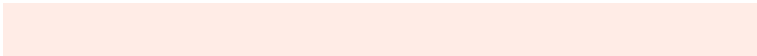


# Same Dimension

The Same Dimension uses a secret algorithm to generate beautiful new colors.



C7BBB7



FFECE6



C7C3B7



635C5A



A32900



240900

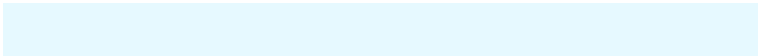


# Inverse Universe

The Inverse Universe completely reimagines the original color for something new.



B7C3C7



E6F9FF



B7BBC7



5A6163



007AA3

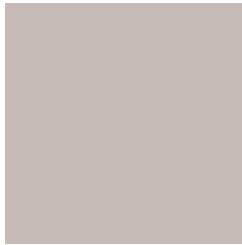


001B24



# Previews

## White Background



This preview shows how the Hex color C7BBB7 looks on a white background.

## Color Contrast Check

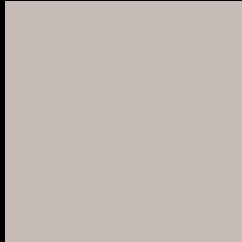
Large Text (above 18pt) WCAG AA × Fail

Any Text WCAG AA × Fail

Large Text (above 18pt) WCAG AAA × Fail

Any Text WCAG AAA × Fail

# Black Background



This preview shows how the Hex color C7BBB7 looks on a black background.

## Color Contrast Check

Large Text (above 18pt) WCAG AA ✓ Pass

Any Text WCAG AA ✓ Pass

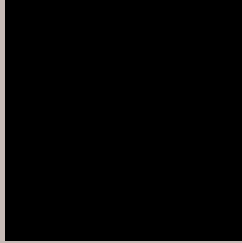
Large Text (above 18pt) WCAG AAA ✓ Pass

Any Text WCAG AAA ✓ Pass

If you want to check with other color combinations, try the [Color Contrast Checker](#).



## Hex C7BBB7 Background



This preview shows how black text looks on a background with the Hex color C7BBB7.



This preview shows how white text looks on a background with the Hex color C7BBB7.

# Color Blindness Simulation

Color vision deficiency is a very complex topic, and I could not describe the different causes any better than Wikipedia does, so if you want to learn more, you should check out their [article about color blindness](#).

## Dichromacy



**Original Color**  
C7BBB7

**Protanopia**  
C2BDB8

**Deuteranopia**  
D2B7B8



**Tritanopia**  
C9B9C7

# Trichromacy



**Original Color**  
C7BBB7

**Protanomaly**  
C4BCB8

**Deuteranomaly**  
CEB8B8

**Tritanomaly**  
C8BAC1

# Monochromacy



**Original Color**  
C7BBB7

**Achromatopsia**  
BEBEBE

**Achromatomaly**  
C1BDBB

# CSS Examples

## Text

The CSS property to change the color of the text to Hex C7BBB7 is called "color". The color property can be set on classes, ids or directly on the HTML element.

This example shows how text in the color #C7BBB7 looks like.

```
.text, #text, p{  
    color:#C7BBB7  
}
```

If you want to add a text shadow in that color use the text-shadow property, you can generate a text shadow directly with our [CSS Text Shadow Generator](#).

Here you see how black text with a 4 pixel #C7BBB7 colored shadow looks like.

```
.shadow{ text-shadow: 4px 4px 2px #C7BBB7
}
```

## Border

The CSS property to change the border of an element to Hex C7BBB7 is called "border". The border property can be set on classes, ids or directly on the HTML element.

This example shows the color as border, it can be applied via the CSS property "border" or "border-color".

```
.border, #border, table{ border:4px solid
#C7BBB7 }
```

If only the border color should be changed use the property `border-color`.

```
.border{ border-color:#C7BBB7 }
```

If you want to add a box shadow in that color use:

Here you see how a box with a 4 pixel #C7BBB7 colored shadow looks like.

```
.boxshadow{ -moz-box-shadow:4px 4px 4px  
4px #C7BBB7; -webkit-box-shadow:4px 4px  
4px 4px #C7BBB7; box-shadow:4px 4px 4px  
4px #C7BBB7 }
```

# Background

The CSS property to change the background color of an element to Hex C7BBB7 is called "background". The background property can be set on classes, ids or directly on the HTML element.

```
.background, #background, body{  
background:#C7BBB7 }
```

If only the background color should be changed can be used:

```
.background{ background-color:#C7BBB7 }
```

This example shows the color as background, it is applied via the CSS property "background".

To optimize and compress your CSS code, you can use our [online CSS compressor and optimizer](#) based on csstidy. If you want to create a linear or radial gradient as background or border, check our [CSS Gradient Generator](#).



Hey! You found this booklet interesting? Support Converting Colors with the new Membership Option!

The pro membership hides all ads, plus gives you double the colors in the color bucket, and more awesome pro features!

**[Learn more, Memberships starting at \\$2.50/m!](#)**

**Follow me  
on Twitter!**

@ConvertingColor