

# Converting Colors

Hex(C7BBBB)

Have a look what the booklet for  
Hex(C7BBBB) contains.

<b>Hex(C7BBBB)</b> .....	3
<i><b>Conversions</b></i> .....	4
<i><b>Details</b></i> .....	6
<i><b>Harmonies</b></i> .....	11
<i><b>Previews</b></i> .....	23
<i><b>Color Blindness Simulation</b></i> .....	26
<i><b>CSS Examples</b></i> .....	29

# **Color**

**Hex(C7BBBB)**

# Conversions

## Conversions Part 1

Format	Color
Hex	C7BBBB
RGB	199, 187, 187
RGB Percent	78%, 73%, 73%
CMY	0.2196, 0.2667, 0.2667
CMYK	0.00, 0.06, 0.06, 0.22
HSL	0°, 10%, 76%
HSV	0°, 6%, 78%
XYZ	50.2932, 51.2706, 54.2592
YIQ	190.5880, 7.1520, 2.5440

# Conversions

## Conversions Part 2

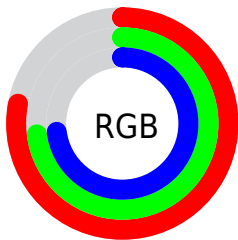
Format	Color
<a href="#">RYB</a>	<a href="#">199, 187, 187</a>
Decimal	<a href="#">13089723</a>
CIELab	<a href="#">76.84, 4.23, 1.51</a>
CIELCh	<a href="#">77, 4.492, 19.652</a>
Yxy	<a href="#">51.2706, 0.3228, 0.3290</a>
Android (android.graphics.Color)	<a href="#">4291279803</a> ( <a href="#">0xFFC7BBBB</a> )
YUV	<a href="#">190.5880, -1.7689, 7.3773</a>
Hunter-Lab	<a href="#">71.6035, 0.0694, 5.1941</a>

# Details

The Hex color **C7BBBB** is a light color, and the websafe version is hex **CCCCCC**. A complement of this color would be **BBC7C7**, and the grayscale version is **BFBFBF**.

A 20% lighter version of the original color is **FFF3F3**, and **918686** is the 20% darker color. If you saturate the color by 10%, you get **C7A7A7**, and if you desaturate by 10%, it is **C7CFCF**.

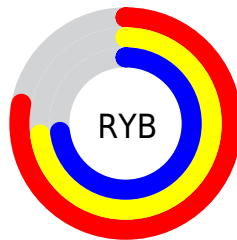
# Distribution



Red (78%)

Green (73%)

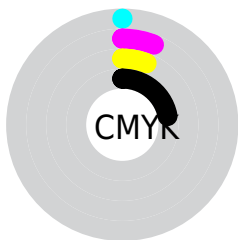
Blue (73%)



Red (78%)

Yellow (73%)

Blue (73%)

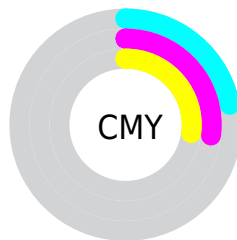


Cyan (0%)

Magenta (6%)

Yellow (6%)

Black (22%)



Cyan (22%)

Magenta (27%)

Yellow (27%)

# Brightness & Saturation Gradients

These gradients show how the Hex color C7BBBB changes by changing the brightness by 10 percent. The first figure shows a shift by +10% for each color and the second figure -10%.

Similar to the brightness gradients but the following saturation gradients show a change of the Hex color C7BBBB by changing the saturation by 10% instead.



 C7BBBB

FFFFFF

 FFF3F3

 C7BBBB

 ACA0A0

 918686

 776D6D

 5F5454

 473D3D

 302728

 1C1313

 000000

 C7BBBB

 C7BBBB

 C7A7A7

 C7CFCF

 C79393

 C7E3E3

 C77F7F

 C7F7F7

 C76B6B

 C7FFFF

 C75858

 C74444

 C73030

 C71C1C

 C70808

# Harmonies

## Analogous

The Analogous color harmony consists of three colors that are next to each other on the color wheel.



C5BBBF



C7BBBB



C6BCB7

# Triad

The Triadic color harmony groups three colors that are evenly spaced from another and form a triangle on the color wheel.



C7BBBB



B9FBF8



B8BEC6

# Complementary

The Complementary color scheme is a pair of colors which are on the opposite of each other on the color wheel.



C7BBBB



BBC7C7

# Split Complementary

Split-complementary colors differ from the complementary color scheme. The scheme consists of three colors, the original color and two neighbors of the complement color.



B5C0C4



C7BBBB



B6C0BC

# Square

The Square scheme is like the rectangle color scheme, but the four colors are evenly spaced on the color wheel.



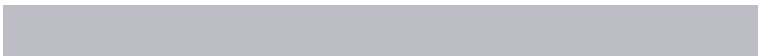
C7BBBB



BEBE6



B4C0C0



BDBDC5

# Rectangle

The Rectangle color scheme consists of four colors that form a rectangle on the color wheel.



C7BBBB



C4BCB6



B4C0C0



B7BFC5



# Sweetspot

The Sweet Spot groups the original color and five complimentary colors.



C7BBBB



FFFAFA



C7BBC7



807D7D



000000



808080

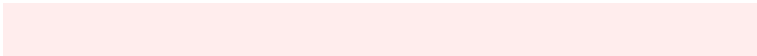


# Same Dimension

The Same Dimension uses a secret algorithm to generate beautiful new colors.



C7BBBB



FFEDED



C7C1BB



635B5B



A30000



240000

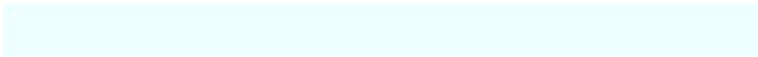


# Inverse Universe

The Inverse Universe completely reimagines the original color for something new.



BBC7C7



EDFFFF



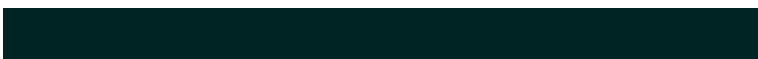
BBC1C7



5B6363



00A3A3

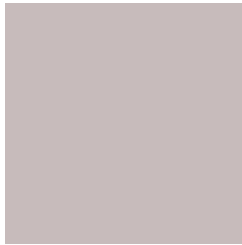


002424



# Previews

## White Background



This preview shows how the Hex color C7BBBB looks on a white background.

## Color Contrast Check

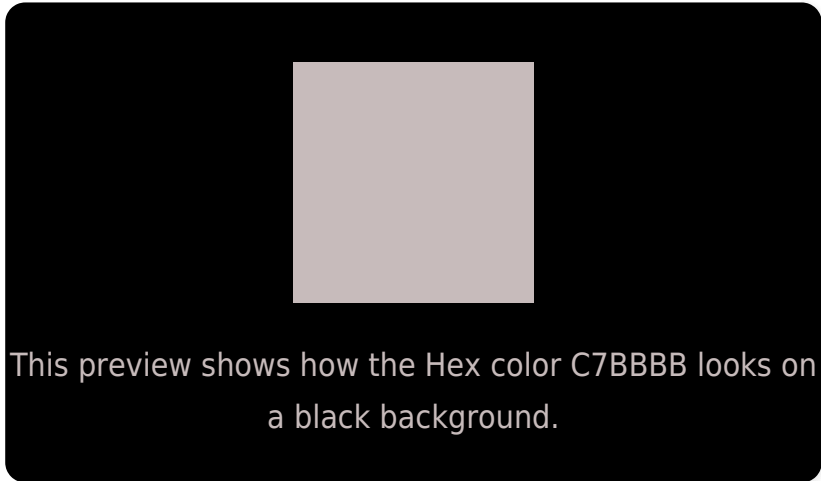
Large Text (above 18pt) WCAG AA × Fail

Any Text WCAG AA × Fail

Large Text (above 18pt) WCAG AAA × Fail

Any Text WCAG AAA × Fail

# Black Background



## Color Contrast Check

Large Text (above 18pt) WCAG AA ✓ Pass

Any Text WCAG AA ✓ Pass

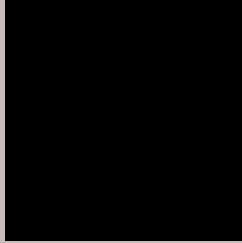
Large Text (above 18pt) WCAG AAA ✓ Pass

Any Text WCAG AAA ✓ Pass

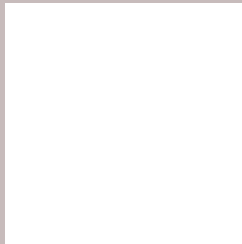
If you want to check with other color combinations, try the [Color Contrast Checker](#).



## Hex C7BBBB Background



This preview shows how black text looks on a background with the Hex color C7BBBB.



This preview shows how white text looks on a background with the Hex color C7BBBB.

# Color Blindness Simulation

Color vision deficiency is a very complex topic, and I could not describe the different causes any better than Wikipedia does, so if you want to learn more, you should check out their [article about color blindness](#).

## Dichromacy





**Tritanopia**  
C9B9C8

# Trichromacy



**Original Color**  
C7BBBB

**Protanomaly**  
C3BCBC

**Deuteranomaly**  
CDB9BC

**Tritanomaly**  
C8BAC3

# Monochromacy



**Original Color**  
C7BBBB

**Achromatopsia**  
BFBFBF

**Achromatomaly**  
C2BEBE

# CSS Examples

## Text

The CSS property to change the color of the text to Hex C7BBBB is called "color". The color property can be set on classes, ids or directly on the HTML element.

This example shows how text in the color #C7BBBB looks like.

```
.text, #text, p{  
    color:#C7BBBB  
}
```

If you want to add a text shadow in that color use the text-shadow property, you can generate a text shadow directly with our [CSS Text Shadow Generator](#).

Here you see how black text with a 4 pixel #C7BBBB colored shadow looks like.

```
.shadow{ text-shadow: 4px 4px 2px #C7BBBB }  
}
```

## Border

The CSS property to change the border of an element to Hex C7BBBB is called "border". The border property can be set on classes, ids or directly on the HTML element.

This example shows the color as border, it can be applied via the CSS property "border" or "border-color".

```
.border, #border, table{ border:4px solid #C7BBBB }  
}
```

If only the border color should be changed use the property `border-color`.

```
.border{ border-color:#C7BBBB }
```

If you want to add a box shadow in that color use:

Here you see how a box with a 4 pixel #C7BBBB colored shadow looks like.

```
.boxshadow{ -moz-box-shadow:4px 4px 4px  
4px #C7BBBB; -webkit-box-shadow:4px 4px  
4px 4px #C7BBBB; box-shadow:4px 4px 4px  
4px #C7BBBB }
```

# Background

The CSS property to change the background color of an element to Hex C7BBBB is called "background". The background property can be set on classes, ids or directly on the HTML element.

```
.background, #background, body{  
background:#C7BBBB }
```

If only the background color should be changed can be used:

```
.background{ background-color:#C7BBBB }
```

This example shows the color as background, it is applied via the CSS property "background".

To optimize and compress your CSS code, you can use our [online CSS compressor and optimizer](#) based on csstidy. If you want to create a linear or radial gradient as background or border, check our [CSS Gradient Generator](#).



Hey! You found this booklet interesting? Support Converting Colors with the new Membership Option!

The pro membership hides all ads, plus gives you double the colors in the color bucket, and more awesome pro features!

**[Learn more, Memberships starting at \\$2.50/m!](#)**

**Follow me  
on Twitter!**

@ConvertingColor