

# Converting Colors

Hex(C84078)

Have a look what the booklet for  
Hex(C84078) contains.

<b>Hex(C84078)</b> .....	3
<i><b>Conversions</b></i> .....	4
<i><b>Details</b></i> .....	6
<i><b>Harmonies</b></i> .....	11
<i><b>Previews</b></i> .....	23
<i><b>Color Blindness Simulation</b></i> .....	26
<i><b>CSS Examples</b></i> .....	29

**Color**

**Hex(C84078)**

# Conversions

## Conversions Part 1

<b>Format</b>	<b>Color</b>
Hex	C84078
RGB	200, 64, 120
RGB Percent	78%, 25%, 47%
CMY	0.2157, 0.7490, 0.5294
CMYK	0.00, 0.68, 0.40, 0.22
HSL	335°, 55%, 52%
HSV	335°, 68%, 78%
XYZ	29.0430, 17.3022, 19.5782
YIQ	111.0480, 63.0800, 46.2480

# Conversions

## Conversions Part 2

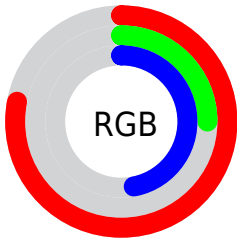
<b>Format</b>	<b>Color</b>
<b>R<sub>YB</sub></b>	200, 64, 120
Decimal	13123704
CIE <sub>Lab</sub>	48.64, 58.16, -1.44
CIE <sub>LCh</sub>	49, 58.176, 358.583
Yxy	17.3022, 0.4406, 0.2625
Android (android.graphics.Color)	4291313784 (0xFFC84078)
YUV	111.0480, 4.4133, 78.0109
Hunter-Lab	41.5959, 51.8388, 1.2107

# Details

The Hex color **C84078** is a dark color, and the websafe version is hex **CC3366**. The color can be described as dark muted rose. A complement of this color would be **40C890**, and the grayscale version is **6F6F6F**.

A 20% lighter version of the original color is **FF78AC**, and **8D0048** is the 20% darker color. If you saturate the color by 10%, you get **C82C6C**, and if you desaturate by 10%, it is **C85484**.

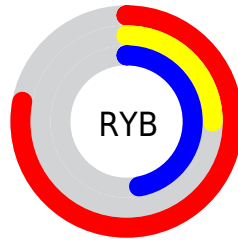
# Distribution



Red (78%)

Green (25%)

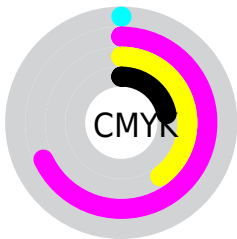
Blue (47%)



Red (78%)

Yellow (25%)

Blue (47%)

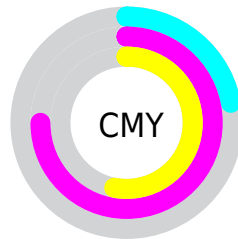


Cyan (0%)

Magenta (68%)

Yellow (40%)

Black (22%)



Cyan (22%)

Magenta (75%)

Yellow (53%)

# Brightness & Saturation Gradients

These gradients show how the Hex color C84078 changes by changing the brightness by 10 percent. The first figure shows a shift by +10% for each color and the second figure -10%.

Similar to the brightness gradients but the following saturation gradients show a change of the Hex color C84078 by changing the saturation by 10% instead.



 C84078

 C84078

FFFFFF

 AA205F

 FF78AC

 8D0048

 FF94C7

 700031

 FFB1E3

 54001D

 FFCEFF

 3B0002

 FFE8FF

 150000

 000000

 C84078

 C84078

 C82C6C

 C85484

 C81860

 C86890

 C80455

 C87C9B

 C80052

 C890A7

 C8A4B3

 C8B8BF

 C8CCCA

 C8E0D6

 C8F4E2

# Harmonies

## Analogous

The Analogous color harmony consists of three colors that are next to each other on the color wheel.



AC50A8



C84078



C84748

# Triad

The Triadic color harmony groups three colors that are evenly spaced from another and form a triangle on the color wheel.



C84078



5C7E0A



0085C7

# Complementary

The Complementary color scheme is a pair of colors which are on the opposite of each other on the color wheel.



C84078



40C890

# Split Complementary

Split-complementary colors differ from the complementary color scheme. The scheme consists of three colors, the original color and two neighbors of the complement color.



008AA1



C84078



00863D

# Square

The Square scheme is like the rectangle color scheme, but the four colors are evenly spaced on the color wheel.



C84078



8D7100



008A70



007AD6

# Rectangle

The Rectangle color scheme consists of four colors that form a rectangle on the color wheel.



C84078



BB552A



008A70



0087BD



# Sweetspot

The Sweet Spot groups the original color and five complimentary colors.



C84078



FFCCE1



8F40C8



80616E



000000



808080



# Same Dimension

The Same Dimension uses a secret algorithm to generate beautiful new colors.



C84078



FF2E84



C84B40



635A5E



A30043



24000F



# Inverse Universe

The Inverse Universe completely reimagines the original color for something new.



C84078



FF2E84



40BDC8



635A5E



A30043



24000F



# Previews

## White Background



This preview shows how the Hex color C84078 looks on a white background.

## Color Contrast Check

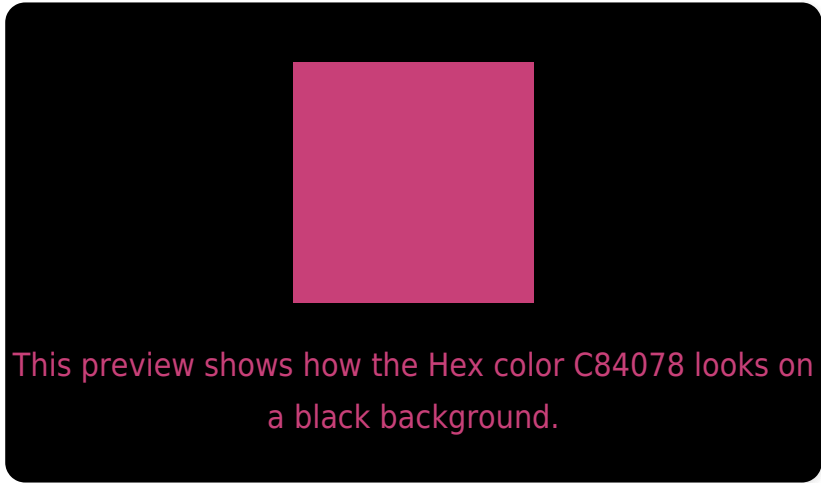
Large Text (above 18pt) WCAG AA ✓ Pass

Any Text WCAG AA ✓ Pass

Large Text (above 18pt) WCAG AAA ✓ Pass

Any Text WCAG AAA × Fail

# Black Background



## Color Contrast Check

Large Text (above 18pt) WCAG AA ✓ Pass

Any Text WCAG AA × Fail

Large Text (above 18pt) WCAG AAA × Fail

Any Text WCAG AAA × Fail

If you want to check with other color combinations, try the [Color Contrast Checker](#).



## Hex C84078 Background



This preview shows how black text looks on a background with the Hex color C84078.



This preview shows how white text looks on a background with the Hex color C84078.

# Color Blindness Simulation

Color vision deficiency is a very complex topic, and I could not describe the different causes any better than Wikipedia does, so if you want to learn more, you should check out their [article about color blindness](#).

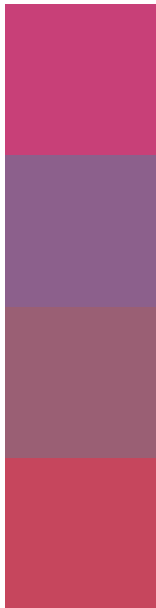
## Dichromacy





**Tritanopia**  
C54A4E

# Trichromacy



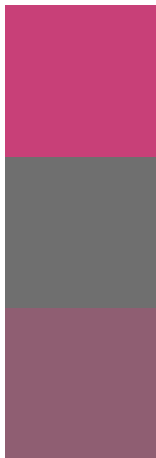
**Original Color**  
C84078

**Protanomaly**  
8C608C

**Deuteranomaly**  
9A5F74

**Tritanomaly**  
C6465D

# Monochromacy



**Original Color**  
C84078

**Achromatopsia**  
6F6F6F

**Achromatomaly**  
8F5E72

# CSS Examples

## Text

The CSS property to change the color of the text to Hex C84078 is called "color". The color property can be set on classes, ids or directly on the HTML element.

This example shows how text in the color #C84078 looks like.

```
.text, #text, p{  
    color:#C84078  
}
```

If you want to add a text shadow in that color use the text-shadow property, you can generate a text shadow directly with our [CSS Text Shadow Generator](#).

Here you see how black text with a 4 pixel #C84078 colored shadow looks like.

```
.shadow{ text-shadow: 4px 4px 2px #C84078
}
```

## Border

The CSS property to change the border of an element to Hex C84078 is called "border". The border property can be set on classes, ids or directly on the HTML element.

This example shows the color as border, it can be applied via the CSS property "border" or "border-color".

```
.border, #border, table{ border:4px solid
#C84078 }
```

If only the border color should be changed use the property `border-color`.

```
.border{ border-color:#C84078 }
```

If you want to add a box shadow in that color use:

Here you see how a box with a 4 pixel #C84078 colored shadow looks like.

```
.boxshadow{ -moz-box-shadow:4px 4px 4px  
4px #C84078; -webkit-box-shadow:4px 4px  
4px 4px #C84078; box-shadow:4px 4px 4px  
4px #C84078 }
```

# Background

The CSS property to change the background color of an element to Hex C84078 is called "background". The background property can be set on classes, ids or directly on the HTML element.

```
.background, #background, body{  
background:#C84078 }
```

If only the background color should be changed can be used:

```
.background{ background-color:#C84078 }
```

This example shows the color as background, it is applied via the CSS property "background".

To optimize and compress your CSS code, you can use our [online CSS compressor and optimizer](#) based on csstidy. If you want to create a linear or radial gradient as background or border, check our [CSS Gradient Generator](#).



Hey! You found this booklet interesting? Support Converting Colors with the new Membership Option!

The pro membership hides all ads, plus gives you double the colors in the color bucket, and more awesome pro features!

**[Learn more, Memberships starting at \\$2.50/m!](#)**

**Follow me  
on Twitter!**

@ConvertingColor