

Converting Colors

Hex(C8908E)

Have a look what the booklet for
Hex(C8908E) contains.

Hex(C8908E)	3
<i>Conversions</i>	4
<i>Details</i>	6
<i>Harmonies</i>	11
<i>Previews</i>	23
<i>Color Blindness Simulation</i>	26
<i>CSS Examples</i>	29

Color

Hex(C8908E)

Conversions

Conversions Part 1

Format	Color
Hex	C8908E
RGB	200, 144, 142
RGB Percent	78%, 56%, 56%
CMY	0.2157, 0.4353, 0.4431
CMYK	0.00, 0.28, 0.29, 0.22
HSL	2°, 35%, 67%
HSV	2°, 29%, 78%
XYZ	38.6752, 34.1789, 30.1500
YIQ	160.5160, 34.0180, 11.2500

Conversions

Conversions Part 2

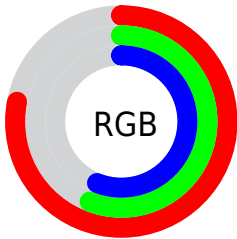
Format	Color
R_{YB}	200, 144, 142
Decimal	13144206
CIE _{Lab}	65.10, 20.92, 9.48
CIE _{LCh}	65, 22.970, 24.367
Yxy	34.1789, 0.3755, 0.3318
Android (android.graphics.Color)	4291334286 (0xFFC8908E)
YUV	160.5160, -9.1284, 34.6275
Hunter-Lab	58.4627, 15.7744, 10.3473

Details

The Hex color **C8908E** is a light color, and the websafe version is hex **CC9999**. A complement of this color would be **8EC6C8**, and the grayscale version is **A1A1A1**.

A 20% lighter version of the original color is **FFC6C4**, and **915D5C** is the 20% darker color. If you saturate the color by 10%, you get **C87D7A**, and if you desaturate by 10%, it is **C8A3A2**.

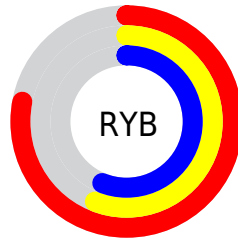
Distribution



Red (78%)

Green (56%)

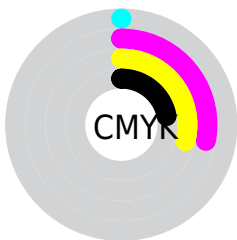
Blue (56%)



Red (78%)

Yellow (56%)

Blue (56%)

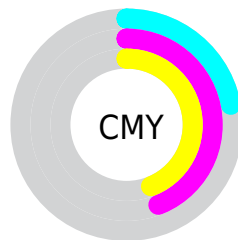


Cyan (0%)

Magenta (28%)

Yellow (29%)

Black (22%)



Cyan (22%)

Magenta (44%)

Yellow (44%)

Brightness & Saturation Gradients

These gradients show how the Hex color C8908E changes by changing the brightness by 10 percent. The first figure shows a shift by +10% for each color and the second figure -10%.

Similar to the brightness gradients but the following saturation gradients show a change of the Hex color C8908E by changing the saturation by 10% instead.

 C8908E

FFFFFF

 FFC6C4

 FFE2E0

FFFFFFC

 C8908E

 C87D7A

 C8908E

 AC7674

 915D5C

 764544

 5C2E2E

 43181A

 2D0100

 000000

 C8908E

 C8A3A2

 C86966

 C8B7B6

 C85652

 C8CACA

 C8433E

 C8DDDE

 C82F2A

 C8F1F2

 C81C16

 C8FFFF

 C80902

 C80700

Harmonies

Analogous

The Analogous color harmony consists of three colors that are next to each other on the color wheel.



C48FA3



C8908E



C1957D

Triad

The Triadic color harmony groups three colors that are evenly spaced from another and form a triangle on the color wheel.



C8908E



84A786



80A1C6

Complementary

The Complementary color scheme is a pair of colors which are on the opposite of each other on the color wheel.



C8908E



8EC6C8

Split Complementary

Split-complementary colors differ from the complementary color scheme. The scheme consists of three colors, the original color and two neighbors of the complement color.



69A6BF



C8908E



6EA999

Square

The Square scheme is like the rectangle color scheme, but the four colors are evenly spaced on the color wheel.



C8908E



9BA278



63A9AE



9C9AC3

Rectangle

The Rectangle color scheme consists of four colors that form a rectangle on the color wheel.



C8908E



B79977



63A9AE



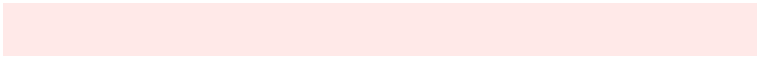
77A3C5

Sweetspot

The Sweet Spot groups the original color and five complimentary colors.



C8908E



FFE9E8



C88EC6



807271



000000



808080

Same Dimension

The Same Dimension uses a secret algorithm to generate beautiful new colors.



C8908E



FFA9A6



C8AD8E



635A5A



A30600



240100

Inverse Universe

The Inverse Universe completely reimagines the original color for something new.



8EC6C8



A6FCFF



8EA9C8



5A6363



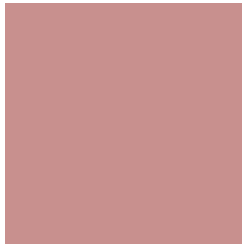
009EA3



002224

Previews

White Background



This preview shows how the Hex color C8908E looks on a white background.

Color Contrast Check

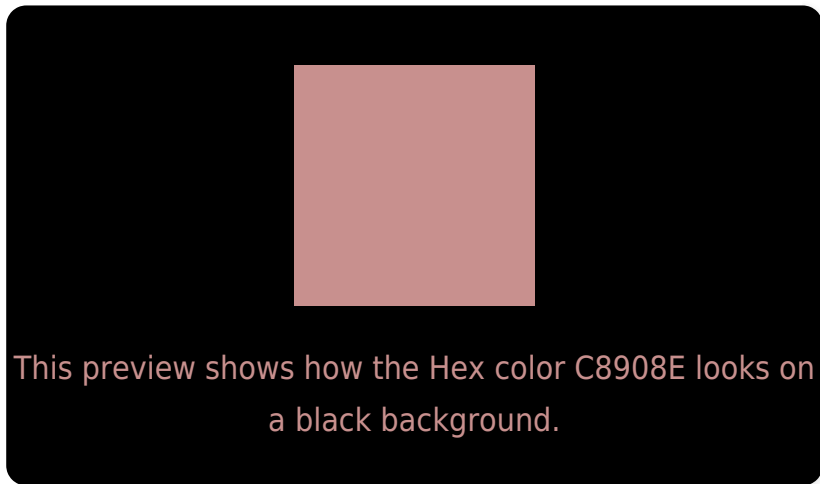
Large Text (above 18pt) WCAG AA × Fail

Any Text WCAG AA × Fail

Large Text (above 18pt) WCAG AAA × Fail

Any Text WCAG AAA × Fail

Black Background



Color Contrast Check

Large Text (above 18pt) WCAG AA ✓ Pass

Any Text WCAG AA ✓ Pass

Large Text (above 18pt) WCAG AAA ✓ Pass

Any Text WCAG AAA ✓ Pass

If you want to check with other color combinations, try the [Color Contrast Checker](#).

Hex C8908E Background



This preview shows how black text looks on a background with the Hex color C8908E.

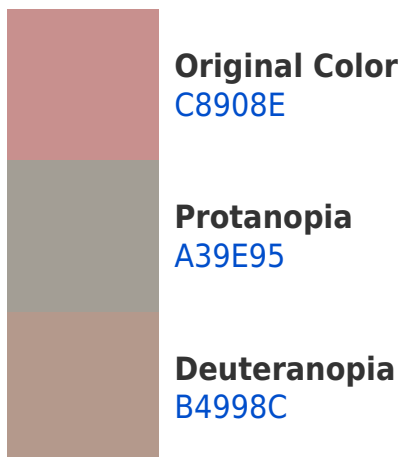


This preview shows how white text looks on a background with the Hex color C8908E.

Color Blindness Simulation

Color vision deficiency is a very complex topic, and I could not describe the different causes any better than Wikipedia does, so if you want to learn more, you should check out their [article about color blindness](#).

Dichromacy





Tritanopia
C98E99

Trichromacy



Original Color
C8908E

Protanomaly
B09992

Deuteranomaly
BB968D

Tritanomaly
C98F95

Monochromacy



Original Color
C8908E

Achromatopsia
A1A1A1

Achromatomaly
AF9B9A

CSS Examples

Text

The CSS property to change the color of the text to Hex C8908E is called "color". The color property can be set on classes, ids or directly on the HTML element.

This example shows how text in the color #C8908E looks like.

```
.text, #text, p{  
    color:#C8908E  
}
```

If you want to add a text shadow in that color use the text-shadow property, you can generate a text shadow directly with our [CSS Text Shadow Generator](#).

Here you see how black text with a 4 pixel #C8908E colored shadow looks like.

```
.shadow{ text-shadow: 4px 4px 2px #C8908E
}
```

Border

The CSS property to change the border of an element to Hex C8908E is called "border". The border property can be set on classes, ids or directly on the HTML element.

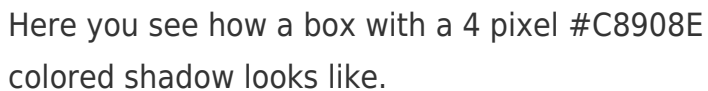
This example shows the color as border, it can be applied via the CSS property "border" or "border-color".

```
.border, #border, table{ border:4px solid
#C8908E }
```

If only the border color should be changed use the property border-color.

```
.border{ border-color:#C8908E }
```

If you want to add a box shadow in that color use:



Here you see how a box with a 4 pixel #C8908E colored shadow looks like.

```
.boxshadow{ -moz-box-shadow:4px 4px 4px  
4px #C8908E; -webkit-box-shadow:4px 4px  
4px 4px #C8908E; box-shadow:4px 4px 4px  
4px #C8908E }
```

Background

The CSS property to change the background color of an element to Hex C8908E is called "background". The background property can be set on classes, ids or directly on the HTML element.

```
.background, #background, body{  
background:#C8908E }
```

If only the background color should be changed can be used:

```
.background{ background-color:#C8908E }
```

This example shows the color as background, it is applied via the CSS property "background".

To optimize and compress your CSS code, you can use our [online CSS compressor and optimizer](#) based on csstidy. If you want to create a linear or radial gradient as background or border, check our [CSS Gradient Generator](#).

Hey! You found this booklet interesting? Support Converting Colors with the new Membership Option!

The pro membership hides all ads, plus gives you double the colors in the color bucket, and more awesome pro features!

[Learn more, Memberships starting at \\$2.50/m!](#)

**Follow me
on Twitter!**

@ConvertingColor