

Converting Colors

Hex(C8A49F)

Have a look what the booklet for
Hex(C8A49F) contains.

Hex(C8A49F)	3
<i>Conversions</i>	4
<i>Details</i>	6
<i>Harmonies</i>	11
<i>Previews</i>	23
<i>Color Blindness Simulation</i>	26
<i>CSS Examples</i>	29

Color

Hex(C8A49F)

Conversions

Conversions Part 1

Format	Color
Hex	C8A49F
RGB	200, 164, 159
RGB Percent	78%, 64%, 62%
CMY	0.2157, 0.3569, 0.3765
CMYK	0.00, 0.18, 0.20, 0.22
HSL	7°, 27%, 70%
HSV	7°, 20%, 78%
XYZ	43.3529, 41.3335, 38.4941
YIQ	174.1940, 23.0610, 6.0770

Conversions

Conversions Part 2

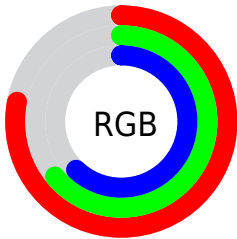
Format	Color
RYB	200, 165, 159
Decimal	13149343
CIELab	70.41, 12.43, 7.56
CIElCh	70, 14.551, 31.311
Yxy	41.3335, 0.3519, 0.3356
Android (android.graphics.Color)	4291339423 (0xFFC8A49F)
YUV	174.1940, -7.4906, 22.6319
Hunter-Lab	64.2911, 7.8569, 9.5041

Details

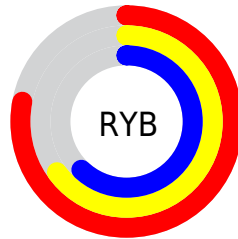
The Hex color **C8A49F** is a light color, and the websafe version is hex **CC9999**. A complement of this color would be **9FC3C8**, and the grayscale version is **AEAEAE**.

A 20% lighter version of the original color is **FFDBD6**, and **91706C** is the 20% darker color. If you saturate the color by 10%, you get **C8928B**, and if you desaturate by 10%, it is **C8B6B3**.

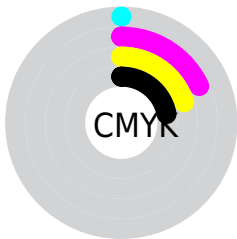
Distribution



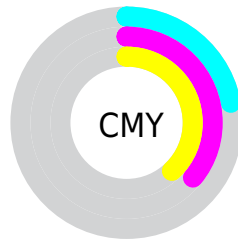
- Red (78%)
- Green (64%)
- Blue (62%)



- Red (78%)
- Yellow (65%)
- Blue (62%)



- Cyan (0%)
- Magenta (18%)
- Yellow (20%)
- Black (22%)



- Cyan (22%)
- Magenta (36%)
- Yellow (38%)

Brightness & Saturation Gradients

These gradients show how the Hex color C8A49F changes by changing the brightness by 10 percent. The first figure shows a shift by +10% for each color and the second figure -10%.

Similar to the brightness gradients but the following saturation gradients show a change of the Hex color C8A49F by changing the saturation by 10% instead.



C8A49F



C8A49F

FFFFFF



AC8A85



FFDBD6



91706C



FFF8F2



775853



5E403C



462A27



2E1512



1A0000



000000



C8A49F



C8A49F

 C8928B

 C8B6B3

 C88177

 C8C7C7

 C86F63

 C8D9DB

 C85E4F

 C8EAEF

 C84C3B

 C8FCFF

 C83B27

 C8FFFF

 C82913

 C81800

Harmonies

Analogous

The Analogous color harmony consists of three colors that are next to each other on the color wheel.



C7A3AC



C8A49F



C2A795

Triad

The Triadic color harmony groups three colors that are evenly spaced from another and form a triangle on the color wheel.



C8A49F



99B39F



9FADC6

Complementary

The Complementary color scheme is a pair of colors which are on the opposite of each other on the color wheel.



C8A49F



9FC3C8

Split Complementary

Split-complementary colors differ from the complementary color scheme. The scheme consists of three colors, the original color and two neighbors of the complement color.



90B1C3



C8A49F



8DB4AC

Square

The Square scheme is like the rectangle color scheme, but the four colors are evenly spaced on the color wheel.



C8A49F



A7B095



8AB3B9



B0A9C3

Rectangle

The Rectangle color scheme consists of four colors that form a rectangle on the color wheel.



C8A49F



BBA092



8AB3B9



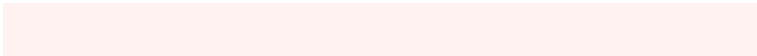
99AFC6

Sweetspot

The Sweet Spot groups the original color and five complimentary colors.



C8A49F



FFF2F0



C89FC3



807877



000000



808080

Same Dimension

The Same Dimension uses a secret algorithm to generate beautiful new colors.



C8A49F



FFC7BF



C8B89F



635B5A



A31400



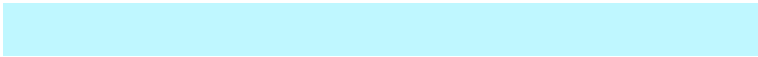
240400

Inverse Universe

The Inverse Universe completely reimagines the original color for something new.



9FC3C8



BFF7FF



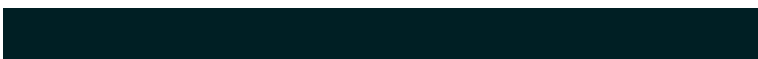
9FAFC8



5A6263



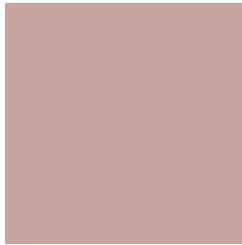
008FA3



001F24

Previews

White Background



This preview shows how the Hex color C8A49F looks on a white background.

Color Contrast Check

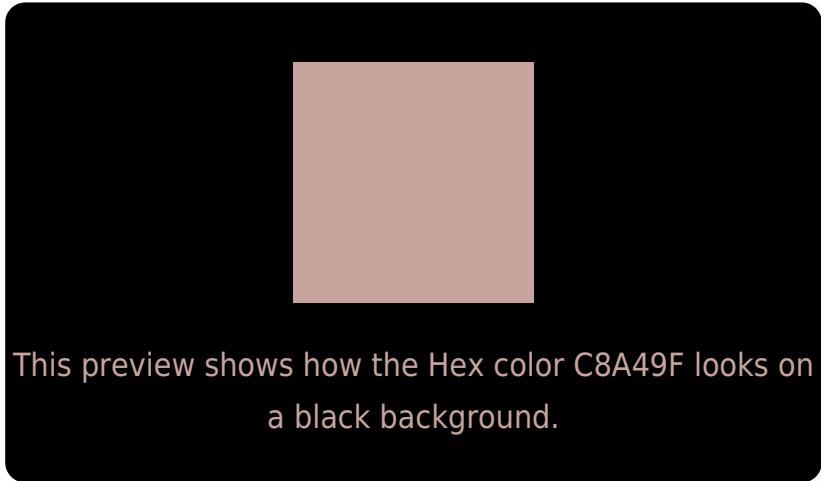
Large Text (above 18pt) WCAG AA × Fail

Any Text WCAG AA × Fail

Large Text (above 18pt) WCAG AAA × Fail

Any Text WCAG AAA × Fail

Black Background



Color Contrast Check

Large Text (above 18pt) WCAG AA ✓ Pass

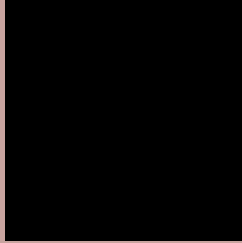
Any Text WCAG AA ✓ Pass

Large Text (above 18pt) WCAG AAA ✓ Pass

Any Text WCAG AAA ✓ Pass

If you want to check with other color combinations, try the [Color Contrast Checker](#).

Hex C8A49F Background



This preview shows how black text looks on a background with the Hex color C8A49F.



This preview shows how white text looks on a background with the Hex color C8A49F.

Color Blindness Simulation

Color vision deficiency is a very complex topic, and I could not describe the different causes any better than Wikipedia does, so if you want to learn more, you should check out their [article about color blindness](#).

Dichromacy



Original Color
C8A49F

Protanopia
B2ACA3

Deuteranopia
C2A69F

Trichromacy



Original Color
C8A49F

Protanomaly
BAA9A2

Deuteranomaly
C4A59F

Tritanomaly
C9A3A9

Monochromacy



Original Color
C8A49F

Achromatopsia
AEAEAE

Achromatomaly
B7AAA9

CSS Examples

Text

The CSS property to change the color of the text to Hex C8A49F is called "color". The color property can be set on classes, ids or directly on the HTML element.

This example shows how text in the color #C8A49F looks like.

```
.text, #text, p{  
    color:#C8A49F  
}
```

If you want to add a text shadow in that color use the text-shadow property, you can generate a text shadow directly with our [CSS Text Shadow Generator](#).

Here you see how black text with a 4 pixel #C8A49F colored shadow looks like.

```
.shadow{ text-shadow: 4px 4px 2px #C8A49F
}
```

Border

The CSS property to change the border of an element to Hex C8A49F is called "border". The border property can be set on classes, ids or directly on the HTML element.

This example shows the color as border, it can be applied via the CSS property "border" or "border-color".

```
.border, #border, table{ border:4px solid
#C8A49F }
```

If only the border color should be changed use the property `border-color`.

```
.border{ border-color:#C8A49F }
```

If you want to add a box shadow in that color use:

Here you see how a box with a 4 pixel #C8A49F colored shadow looks like.

```
.boxshadow{ -moz-box-shadow:4px 4px 4px  
4px #C8A49F; -webkit-box-shadow:4px 4px  
4px 4px #C8A49F; box-shadow:4px 4px 4px  
4px #C8A49F }
```

Background

The CSS property to change the background color of an element to Hex C8A49F is called "background". The background property can be set on classes, ids or directly on the HTML element.

```
.background, #background, body{  
background:#C8A49F }
```

If only the background color should be changed can be used:

```
.background{ background-color:#C8A49F }
```

This example shows the color as background, it is applied via the CSS property "background".

To optimize and compress your CSS code, you can use our [online CSS compressor and optimizer](#) based on csstidy. If you want to create a linear or radial gradient as background or border, check our [CSS Gradient Generator](#).

Hey! You found this booklet interesting? Support Converting Colors with the new Membership Option!

The pro membership hides all ads, plus gives you double the colors in the color bucket, and more awesome pro features!

[Learn more, Memberships starting at \\$2.50/m!](#)

**Follow me
on Twitter!**

@ConvertingColor