

Converting Colors

Hex(C8A697)

Have a look what the booklet for
Hex(C8A697) contains.

Hex(C8A697)	3
<i>Conversions</i>	4
<i>Details</i>	6
<i>Harmonies</i>	11
<i>Previews</i>	23
<i>Color Blindness Simulation</i>	26
<i>CSS Examples</i>	29

Color

Hex(C8A697)

Conversions

Conversions Part 1

Format	Color
Hex	C8A697
RGB	200, 166, 151
RGB Percent	78%, 65%, 59%
CMY	0.2157, 0.3490, 0.4078
CMYK	0.00, 0.17, 0.24, 0.22
HSL	18°, 31%, 69%
HSV	18°, 24%, 78%
XYZ	43.0415, 41.7862, 35.0752
YIQ	174.4560, 25.0790, 2.5430

Conversions

Conversions Part 2

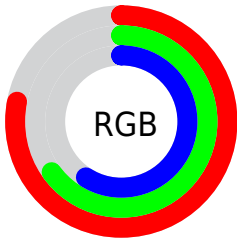
Format	Color
R _Y B	200, 173, 151
Decimal	13149847
CIE Lab	70.72, 10.15, 12.42
CIE LCh	71, 16.043, 50.736
Yxy	41.7862, 0.3590, 0.3485
Android (android.graphics.Color)	4291339927 (0xFFC8A697)
YUV	174.4560, -11.5638, 22.4021
Hunter-Lab	64.6422, 5.7290, 13.0785

Details

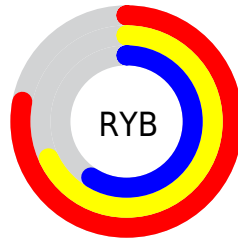
The Hex color **C8A697** is a light color, and the websafe version is hex **CC9999**. A complement of this color would be **97B9C8**, and the grayscale version is **AFAFAF**.

A 20% lighter version of the original color is **FFDDCD**, and **917264** is the 20% darker color. If you saturate the color by 10%, you get **C89883**, and if you desaturate by 10%, it is **C8B4AB**.

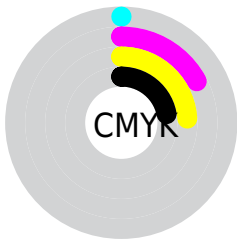
Distribution



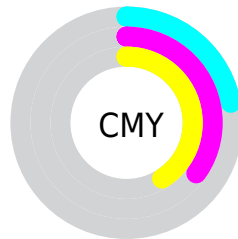
- Red (78%)
- Green (65%)
- Blue (59%)



- Red (78%)
- Yellow (68%)
- Blue (59%)



- Cyan (0%)
- Magenta (17%)
- Yellow (24%)
- Black (22%)



- Cyan (22%)
- Magenta (35%)
- Yellow (41%)

Brightness & Saturation Gradients

These gradients show how the Hex color C8A697 changes by changing the brightness by 10 percent. The first figure shows a shift by +10% for each color and the second figure -10%.

Similar to the brightness gradients but the following saturation gradients show a change of the Hex color C8A697 by changing the saturation by 10% instead.

 C8A697

 C8A697

FFFFFF

 AC8C7D

 FFDDCD

 917264

 FFFAE9

 775A4C

 5E4235

 452C20

 2E1709

 180000

 000000

 C8A697

 C8A697

 C89883

 C8B4AB

 C88A6F

 C8C2BF

 C87C5B

 C8D0D3

 C86E47

 C8DEE7

 C86133

 C8EBFB

 C8531F

 C8F9FF

 C8450B

 C8FFFF

 C83D00

Harmonies

Analogous

The Analogous color harmony consists of three colors that are next to each other on the color wheel.



CCA3A3



C8A697



BDAA91

Triad

The Triadic color harmony groups three colors that are evenly spaced from another and form a triangle on the color wheel.



C8A697



8FB5A8



AAABC8

Complementary

The Complementary color scheme is a pair of colors which are on the opposite of each other on the color wheel.



C8A697



97B9C8

Split Complementary

Split-complementary colors differ from the complementary color scheme. The scheme consists of three colors, the original color and two neighbors of the complement color.



97B0C9



C8A697



87B5B7

Square

The Square scheme is like the rectangle color scheme, but the four colors are evenly spaced on the color wheel.



C8A697



9DB39A



8AB3C3



BCA6C0

Rectangle

The Rectangle color scheme consists of four colors that form a rectangle on the color wheel.



C8A697



B3AE90



8AB3C3



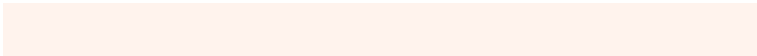
A4ADC9

Sweetspot

The Sweet Spot groups the original color and five complimentary colors.



C8A697



FFF3ED



C897B9



807875



000000



808080

Same Dimension

The Same Dimension uses a secret algorithm to generate beautiful new colors.



C8A697



FFCCB5



C8BE97



635D5A



A33200



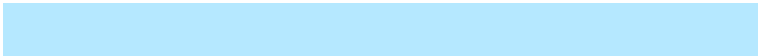
240B00

Inverse Universe

The Inverse Universe completely reimagines the original color for something new.



97B9C8



B5E8FF



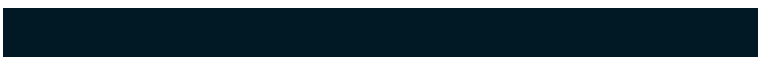
97A1C8



5A6063



0071A3



001924

Previews

White Background



This preview shows how the Hex color C8A697 looks on a white background.

Color Contrast Check

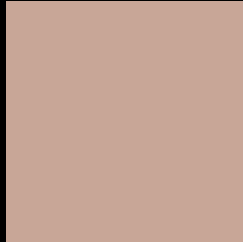
Large Text (above 18pt) WCAG AA × Fail

Any Text WCAG AA × Fail

Large Text (above 18pt) WCAG AAA × Fail

Any Text WCAG AAA × Fail

Black Background



This preview shows how the Hex color C8A697 looks on a black background.

Color Contrast Check

Large Text (above 18pt) WCAG AA ✓ Pass

Any Text WCAG AA ✓ Pass

Large Text (above 18pt) WCAG AAA ✓ Pass

Any Text WCAG AAA ✓ Pass

If you want to check with other color combinations, try the [Color Contrast Checker](#).

Hex C8A697 Background



This preview shows how black text looks on a background with the Hex color C8A697.



This preview shows how white text looks on a background with the Hex color C8A697.

Color Blindness Simulation

Color vision deficiency is a very complex topic, and I could not describe the different causes any better than Wikipedia does, so if you want to learn more, you should check out their [article about color blindness](#).

Dichromacy



Original Color
C8A697

Protanopia
B5AD9A

Deuteranopia
C6A797

Trichromacy



Original Color
C8A697

Protanomaly
BCAA99

Deuteranomaly
C7A797

Tritanomaly
CAA3A6

Monochromacy



Original Color
C8A697

Achromatopsia
AEAEAE

Achromatomaly
B7ABA6

CSS Examples

Text

The CSS property to change the color of the text to Hex C8A697 is called "color". The color property can be set on classes, ids or directly on the HTML element.

This example shows how text in the color #C8A697 looks like.

```
.text, #text, p{  
    color:#C8A697  
}
```

If you want to add a text shadow in that color use the text-shadow property, you can generate a text shadow directly with our [CSS Text Shadow Generator](#).

Here you see how black text with a 4 pixel #C8A697 colored shadow looks like.

```
.shadow{ text-shadow: 4px 4px 2px #C8A697
}
```

Border

The CSS property to change the border of an element to Hex C8A697 is called "border". The border property can be set on classes, ids or directly on the HTML element.

This example shows the color as border, it can be applied via the CSS property "border" or "border-color".

```
.border, #border, table{ border:4px solid
#C8A697 }
```

If only the border color should be changed use the property `border-color`.

```
.border{ border-color:#C8A697 }
```

If you want to add a box shadow in that color use:

Here you see how a box with a 4 pixel #C8A697 colored shadow looks like.

```
.boxshadow{ -moz-box-shadow:4px 4px 4px  
4px #C8A697; -webkit-box-shadow:4px 4px  
4px 4px #C8A697; box-shadow:4px 4px 4px  
4px #C8A697 }
```

Background

The CSS property to change the background color of an element to Hex C8A697 is called "background". The background property can be set on classes, ids or directly on the HTML element.

```
.background, #background, body{  
background:#C8A697 }
```

If only the background color should be changed can be used:

```
.background{ background-color:#C8A697 }
```

This example shows the color as background, it is applied via the CSS property "background".

To optimize and compress your CSS code, you can use our [online CSS compressor and optimizer](#) based on csstidy. If you want to create a linear or radial gradient as background or border, check our [CSS Gradient Generator](#).

Hey! You found this booklet interesting? Support Converting Colors with the new Membership Option!

The pro membership hides all ads, plus gives you double the colors in the color bucket, and more awesome pro features!

[Learn more, Memberships starting at \\$2.50/m!](#)

**Follow me
on Twitter!**

@ConvertingColor