

Converting Colors

Hex(C8A798)

Have a look what the booklet for
Hex(C8A798) contains.

Hex(C8A798)	3
<i>Conversions</i>	4
<i>Details</i>	6
<i>Harmonies</i>	11
<i>Previews</i>	23
<i>Color Blindness Simulation</i>	26
<i>CSS Examples</i>	29

Color

Hex(C8A798)

Conversions

Conversions Part 1

Format	Color
Hex	C8A798
RGB	200, 167, 152
RGB Percent	78%, 65%, 60%
CMY	0.2157, 0.3451, 0.4039
CMYK	0.00, 0.16, 0.24, 0.22
HSL	19°, 30%, 69%
HSV	19°, 24%, 78%
XYZ	43.3056, 42.1838, 35.5656
YIQ	175.1570, 24.4830, 2.3310

Conversions

Conversions Part 2

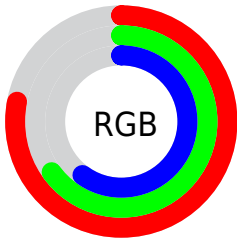
Format	Color
R _Y B	200, 174, 152
Decimal	13150104
CIE Lab	71.00, 9.76, 12.26
CIE LCh	71, 15.666, 51.486
Yxy	42.1838, 0.3577, 0.3485
Android (android.graphics.Color)	4291340184 (0xFFC8A798)
YUV	175.1570, -11.4164, 21.7873
Hunter-Lab	64.9491, 5.3564, 12.9976

Details

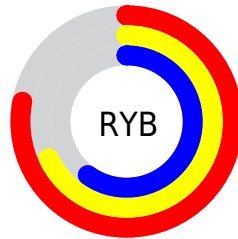
The Hex color **C8A798** is a light color, and the websafe version is hex **CC9999**. A complement of this color would be **98B9C8**, and the grayscale version is **AFAFAF**.

A 20% lighter version of the original color is **FFDECE**, and **917365** is the 20% darker color. If you saturate the color by 10%, you get **C89984**, and if you desaturate by 10%, it is **C8B5AC**.

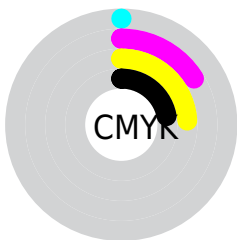
Distribution



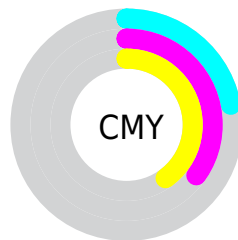
- Red (78%)
- Green (65%)
- Blue (60%)



- Red (78%)
- Yellow (68%)
- Blue (60%)



- Cyan (0%)
- Magenta (16%)
- Yellow (24%)
- Black (22%)



- Cyan (22%)
- Magenta (35%)
- Yellow (40%)

Brightness & Saturation Gradients

These gradients show how the Hex color C8A798 changes by changing the brightness by 10 percent. The first figure shows a shift by +10% for each color and the second figure -10%.

Similar to the brightness gradients but the following saturation gradients show a change of the Hex color C8A798 by changing the saturation by 10% instead.

 C8A798

 C8A798

FFFFFF

 AC8D7E

 FFDECE

 917365

 FFFBEA

 775A4D

 5E4336

 452D21

 2E180B

 180000

 000000

 C8A798

 C8A798

 C89984

 C8B5AC

 C88C70

 C8C3C0

 C87E5C

 C8D0D4

 C87048

 C8DEE8

 C86234

 C8ECFC

 C85520

 C8FAFF

 C8470C

 C8FFFF

 C83F00

Harmonies

Analogous

The Analogous color harmony consists of three colors that are next to each other on the color wheel.



CCA4A4



C8A798



BDAB92

Triad

The Triadic color harmony groups three colors that are evenly spaced from another and form a triangle on the color wheel.



C8A798



90B6A9



ABABC8

Complementary

The Complementary color scheme is a pair of colors which are on the opposite of each other on the color wheel.



C8A798



98B9C8

Split Complementary

Split-complementary colors differ from the complementary color scheme. The scheme consists of three colors, the original color and two neighbors of the complement color.



99B0CA



C8A798



89B6B8

Square

The Square scheme is like the rectangle color scheme, but the four colors are evenly spaced on the color wheel.



C8A798



9EB49C



8CB4C4



BCA7C0

Rectangle

The Rectangle color scheme consists of four colors that form a rectangle on the color wheel.



C8A798



B3AF92



8CB4C4



A5ADC9

Sweetspot

The Sweet Spot groups the original color and five complimentary colors.



C8A798



FFF3ED



C898BA



807875



000000



808080

Same Dimension

The Same Dimension uses a secret algorithm to generate beautiful new colors.



C8A798



FFCCB5



C8BE98



635D5A



A33300



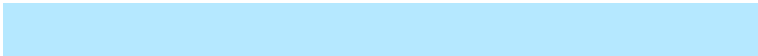
240B00

Inverse Universe

The Inverse Universe completely reimagines the original color for something new.



98B9C8



B5E8FF



98A2C8



5A6063



0070A3



001924

Previews

White Background



This preview shows how the Hex color C8A798 looks on a white background.

Color Contrast Check

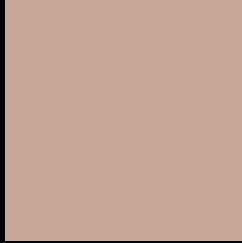
Large Text (above 18pt) WCAG AA × Fail

Any Text WCAG AA × Fail

Large Text (above 18pt) WCAG AAA × Fail

Any Text WCAG AAA × Fail

Black Background



This preview shows how the Hex color C8A798 looks on a black background.

Color Contrast Check

Large Text (above 18pt) WCAG AA ✓ Pass

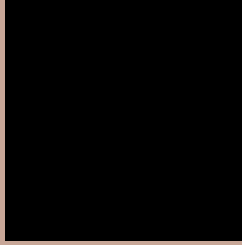
Any Text WCAG AA ✓ Pass

Large Text (above 18pt) WCAG AAA ✓ Pass

Any Text WCAG AAA ✓ Pass

If you want to check with other color combinations, try the [Color Contrast Checker](#).

Hex C8A798 Background



This preview shows how black text looks on a background with the Hex color C8A798.



This preview shows how white text looks on a background with the Hex color C8A798.

Color Blindness Simulation

Color vision deficiency is a very complex topic, and I could not describe the different causes any better than Wikipedia does, so if you want to learn more, you should check out their [article about color blindness](#).

Dichromacy



Original Color
C8A798

Protanopia
B5AD9B

Deuteranopia
C7A898

Trichromacy



Original Color
C8A798

Protanomaly
BCAB9A

Deuteranomaly
C7A898

Tritanomaly
CAA4A7

Monochromacy



Original Color
C8A798

Achromatopsia
AFAFAF

Achromatomaly
B8ACA7

CSS Examples

Text

The CSS property to change the color of the text to Hex C8A798 is called "color". The color property can be set on classes, ids or directly on the HTML element.

This example shows how text in the color #C8A798 looks like.

```
.text, #text, p{  
    color:#C8A798  
}
```

If you want to add a text shadow in that color use the text-shadow property, you can generate a text shadow directly with our [CSS Text Shadow Generator](#).

Here you see how black text with a 4 pixel #C8A798 colored shadow looks like.

```
.shadow{ text-shadow: 4px 4px 2px #C8A798
}
```

Border

The CSS property to change the border of an element to Hex C8A798 is called "border". The border property can be set on classes, ids or directly on the HTML element.

This example shows the color as border, it can be applied via the CSS property "border" or "border-color".

```
.border, #border, table{ border:4px solid
#C8A798 }
```

If only the border color should be changed use the property `border-color`.

```
.border{ border-color:#C8A798 }
```

If you want to add a box shadow in that color use:

Here you see how a box with a 4 pixel #C8A798 colored shadow looks like.

```
.boxshadow{ -moz-box-shadow:4px 4px 4px  
4px #C8A798; -webkit-box-shadow:4px 4px  
4px 4px #C8A798; box-shadow:4px 4px 4px  
4px #C8A798 }
```

Background

The CSS property to change the background color of an element to Hex C8A798 is called "background". The background property can be set on classes, ids or directly on the HTML element.

```
.background, #background, body{  
background:#C8A798 }
```

If only the background color should be changed can be used:

```
.background{ background-color:#C8A798 }
```

This example shows the color as background, it is applied via the CSS property "background".

To optimize and compress your CSS code, you can use our [online CSS compressor and optimizer](#) based on csstidy. If you want to create a linear or radial gradient as background or border, check our [CSS Gradient Generator](#).

Hey! You found this booklet interesting? Support Converting Colors with the new Membership Option!

The pro membership hides all ads, plus gives you double the colors in the color bucket, and more awesome pro features!

[Learn more, Memberships starting at \\$2.50/m!](#)

**Follow me
on Twitter!**

@ConvertingColor