

Converting Colors

Hex(C8ACA8)

Have a look what the booklet for
Hex(C8ACA8) contains.

Hex(C8ACA8)	3
<i>Conversions</i>	4
<i>Details</i>	6
<i>Harmonies</i>	11
<i>Previews</i>	23
<i>Color Blindness Simulation</i>	26
<i>CSS Examples</i>	29

Color

Hex(C8ACA8)

Conversions

Conversions Part 1

Format	Color
Hex	C8ACA8
RGB	200, 172, 168
RGB Percent	78%, 67%, 66%
CMY	0.2157, 0.3255, 0.3412
CMYK	0.00, 0.14, 0.16, 0.22
HSL	8°, 23%, 72%
HSV	8°, 16%, 78%
XYZ	45.6398, 44.6116, 43.2512
YIQ	179.9160, 17.9720, 4.6920

Conversions

Conversions Part 2

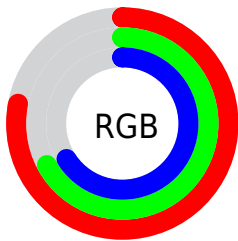
Format	Color
R_{YB}	200, 173, 168
Decimal	13151400
CIE Lab	72.64, 9.49, 5.80
CIE LCh	73, 11.119, 31.439
Yxy	44.6116, 0.3419, 0.3342
Android (android.graphics.Color)	4291341480 (0xFFC8ACA8)
YUV	179.9160, -5.8746, 17.6137
Hunter-Lab	66.7919, 5.0857, 8.3610

Details

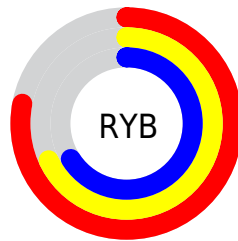
The Hex color **C8ACA8** is a light color, and the websafe version is hex **CC9999**. A complement of this color would be **A8C4C8**, and the grayscale version is **B4B4B4**.

A 20% lighter version of the original color is **FFE3DF**, and **927874** is the 20% darker color. If you saturate the color by 10%, you get **C89B94**, and if you desaturate by 10%, it is **C8BEBC**.

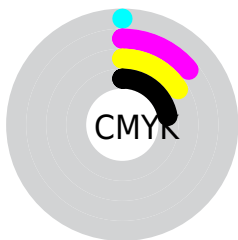
Distribution



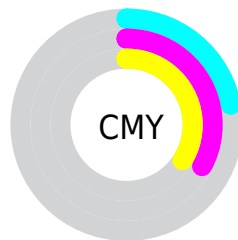
- Red (78%)
- Green (67%)
- Blue (66%)



- Red (78%)
- Yellow (68%)
- Blue (66%)



- Cyan (0%)
- Magenta (14%)
- Yellow (16%)
- Black (22%)



- Cyan (22%)
- Magenta (33%)
- Yellow (34%)

Brightness & Saturation Gradients

These gradients show how the Hex color C8ACA8 changes by changing the brightness by 10 percent. The first figure shows a shift by +10% for each color and the second figure -10%.

Similar to the brightness gradients but the following saturation gradients show a change of the Hex color C8ACA8 by changing the saturation by 10% instead.



C8ACA8



C8ACA8

FFFFFF



AC918E



FFE3DF



927874

FFFFFFC



785F5B



5F4744



47312E



301C19



1D0200



000000



C8ACA8



C8ACA8

 C89B94

 C8BEBC

 C88980

 C8CFD0

 C8786C

 C8E1E4

 C86658

 C8F2F8

 C85544

 C8FFFF

 C84330

 C8321C

 C82008

 C81900

Harmonies

Analogous

The Analogous color harmony consists of three colors that are next to each other on the color wheel.



C7ABB2



C8ACA8



C3AEA1

Triad

The Triadic color harmony groups three colors that are evenly spaced from another and form a triangle on the color wheel.



C8ACA8



A3B7A8



A8B3C6

Complementary

The Complementary color scheme is a pair of colors which are on the opposite of each other on the color wheel.



C8ACA8



A8C4C8

Split Complementary

Split-complementary colors differ from the complementary color scheme. The scheme consists of three colors, the original color and two neighbors of the complement color.



9EB6C4



C8ACA8



9BB8B2

Square

The Square scheme is like the rectangle color scheme, but the four colors are evenly spaced on the color wheel.



C8ACA8



AFB5A1



99B8BC



B5AFC3

Rectangle

The Rectangle color scheme consists of four colors that form a rectangle on the color wheel.



C8ACA8



BEB09E



99B8BC



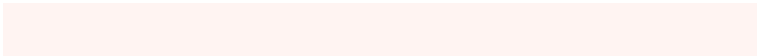
A4B4C6

Sweetspot

The Sweet Spot groups the original color and five complimentary colors.



C8ACA8



FFF4F2



C8A8C4



807978



000000



808080

Same Dimension

The Same Dimension uses a secret algorithm to generate beautiful new colors.



C8ACA8



FFD5CF



C8BCA8



635B5A



A31400



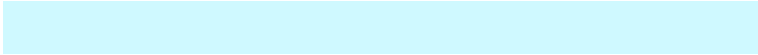
240400

Inverse Universe

The Inverse Universe completely reimagines the original color for something new.



A8C4C8



CFF9FF



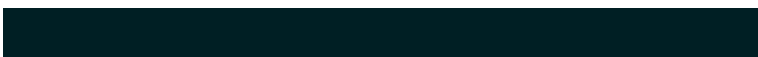
A8B4C8



5A6263



008FA3



001F24

Previews

White Background



This preview shows how the Hex color C8ACA8 looks on a white background.

Color Contrast Check

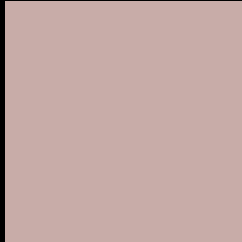
Large Text (above 18pt) WCAG AA × Fail

Any Text WCAG AA × Fail

Large Text (above 18pt) WCAG AAA × Fail

Any Text WCAG AAA × Fail

Black Background



This preview shows how the Hex color C8ACA8 looks on a black background.

Color Contrast Check

Large Text (above 18pt) WCAG AA ✓ Pass

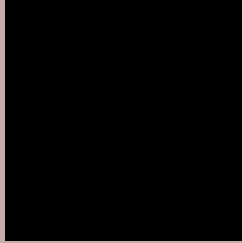
Any Text WCAG AA ✓ Pass

Large Text (above 18pt) WCAG AAA ✓ Pass

Any Text WCAG AAA ✓ Pass

If you want to check with other color combinations, try the [Color Contrast Checker](#).

Hex C8ACA8 Background



This preview shows how black text looks on a background with the Hex color C8ACA8.



This preview shows how white text looks on a background with the Hex color C8ACA8.

Color Blindness Simulation

Color vision deficiency is a very complex topic, and I could not describe the different causes any better than Wikipedia does, so if you want to learn more, you should check out their [article about color blindness](#).

Dichromacy



Original Color
C8ACA8

Protanopia
B7B2AB

Deuteranopia
C7ACA8

Trichromacy



Original Color
C8ACA8

Protanomaly
BDB0AA

Deuteranomaly
C7ACA8

Tritanomaly
C9ABB2

Monochromacy



Original Color
C8ACA8

Achromatopsia
B4B4B4

Achromatomaly
BBB1B0

CSS Examples

Text

The CSS property to change the color of the text to Hex C8ACA8 is called "color". The color property can be set on classes, ids or directly on the HTML element.

This example shows how text in the color #C8ACA8 looks like.

```
.text, #text, p{  
    color:#C8ACA8  
}
```

If you want to add a text shadow in that color use the text-shadow property, you can generate a text shadow directly with our [CSS Text Shadow Generator](#).

Here you see how black text with a 4 pixel #C8ACA8 colored shadow looks like.

```
.shadow{ text-shadow: 4px 4px 2px #C8ACA8  
}
```

Border

The CSS property to change the border of an element to Hex C8ACA8 is called "border". The border property can be set on classes, ids or directly on the HTML element.

This example shows the color as border, it can be applied via the CSS property "border" or "border-color".

```
.border, #border, table{ border:4px solid  
#C8ACA8 }
```

If only the border color should be changed use the property `border-color`.

```
.border{ border-color:#C8ACA8 }
```

If you want to add a box shadow in that color use:

Here you see how a box with a 4 pixel #C8ACA8 colored shadow looks like.

```
.boxshadow{ -moz-box-shadow:4px 4px 4px  
4px #C8ACA8; -webkit-box-shadow:4px 4px  
4px 4px #C8ACA8; box-shadow:4px 4px 4px  
4px #C8ACA8 }
```

Background

The CSS property to change the background color of an element to Hex C8ACA8 is called "background". The background property can be set on classes, ids or directly on the HTML element.

```
.background, #background, body{  
background:#C8ACA8 }
```

If only the background color should be changed can be used:

```
.background{ background-color:#C8ACA8 }
```

This example shows the color as background, it is applied via the CSS property "background".

To optimize and compress your CSS code, you can use our [online CSS compressor and optimizer](#) based on csstidy. If you want to create a linear or radial gradient as background or border, check our [CSS Gradient Generator](#).

Hey! You found this booklet interesting? Support Converting Colors with the new Membership Option!

The pro membership hides all ads, plus gives you double the colors in the color bucket, and more awesome pro features!

[Learn more, Memberships starting at \\$2.50/m!](#)

**Follow me
on Twitter!**

@ConvertingColor