

# Converting Colors

Hex(C8B2B2)

Have a look what the booklet for  
Hex(C8B2B2) contains.

<b>Hex(C8B2B2)</b> .....	3
<i><b>Conversions</b></i> .....	4
<i><b>Details</b></i> .....	6
<i><b>Harmonies</b></i> .....	11
<i><b>Previews</b></i> .....	23
<i><b>Color Blindness Simulation</b></i> .....	26
<i><b>CSS Examples</b></i> .....	29

# **Color**

**Hex(C8B2B2)**

# Conversions

## Conversions Part 1

Format	Color
Hex	C8B2B2
RGB	200, 178, 178
RGB Percent	78%, 70%, 70%
CMY	0.2157, 0.3020, 0.3020
CMYK	0.00, 0.11, 0.11, 0.22
HSL	0°, 17%, 74%
HSV	0°, 11%, 78%
XYZ	47.7757, 47.3345, 48.7379
YIQ	184.5780, 13.1120, 4.6640

# Conversions

## Conversions Part 2

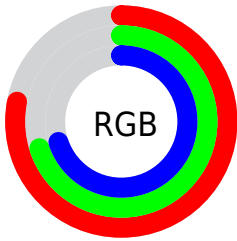
<b>Format</b>	<b>Color</b>
<b>R<sub>YB</sub></b>	200, 178, 178
Decimal	13152946
CIE Lab	74.40, 7.88, 2.88
CIE LCh	74, 8.391, 20.051
Yxy	47.3345, 0.3321, 0.3291
Android (android.graphics.Color)	4291343026 (0xFFC8B2B2)
YUV	184.5780, -3.2430, 13.5251
Hunter-Lab	68.8001, 3.5527, 6.1591

# Details

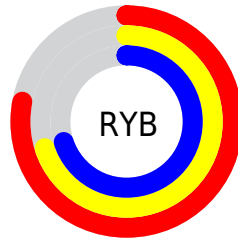
The Hex color **C8B2B2** is a light color, and the websafe version is hex **CCCCCC**. A complement of this color would be **B2C8C8**, and the grayscale version is **B9B9B9**.

A 20% lighter version of the original color is **FFEAEA**, and **927D7D** is the 20% darker color. If you saturate the color by 10%, you get **C89E9E**, and if you desaturate by 10%, it is **C8C6C6**.

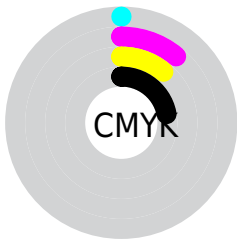
# Distribution



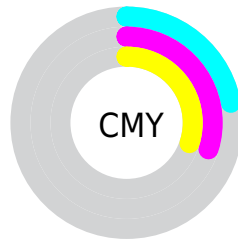
- Red (78%)
- Green (70%)
- Blue (70%)



- Red (78%)
- Yellow (70%)
- Blue (70%)



- Cyan (0%)
- Magenta (11%)
- Yellow (11%)
- Black (22%)



- Cyan (22%)
- Magenta (30%)
- Yellow (30%)

# Brightness & Saturation Gradients

These gradients show how the Hex color C8B2B2 changes by changing the brightness by 10 percent. The first figure shows a shift by +10% for each color and the second figure -10%.

Similar to the brightness gradients but the following saturation gradients show a change of the Hex color C8B2B2 by changing the saturation by 10% instead.



 C8B2B2

 C8B2B2

FFFFFF

 AD9797

 FFEAEA

 927D7D

 786464

 5F4C4D

 473636

 312021

 1D0A09

 000000

 C8B2B2

 C8B2B2

 C89E9E

 C8C6C6

 C88A8A

 C8DADA

 C87676

 C8EEEE

 C86262

 C8FFFF

 C84E4E

 C83A3A

 C82626

 C81212

 C80000

# Harmonies

## Analogous

The Analogous color harmony consists of three colors that are next to each other on the color wheel.



C5B2BA



C8B2B2



C6B3AB

# Triad

The Triadic color harmony groups three colors that are evenly spaced from another and form a triangle on the color wheel.



C8B2B2



AFBAAD



ACB8C6

# Complementary

The Complementary color scheme is a pair of colors which are on the opposite of each other on the color wheel.



C8B2B2



B2C8C8

# Split Complementary

Split-complementary colors differ from the complementary color scheme. The scheme consists of three colors, the original color and two neighbors of the complement color.



A6BAC2



C8B2B2



A8BCB4

# Square

The Square scheme is like the rectangle color scheme, but the four colors are evenly spaced on the color wheel.



C8B2B2



B8B8A9



A4BCBC



B5B6C5

# Rectangle

The Rectangle color scheme consists of four colors that form a rectangle on the color wheel.



C8B2B2



C3B5A9



A4BCBC



AAB9C5



# Sweetspot

The Sweet Spot groups the original color and five complimentary colors.



C8B2B2



FFF7F7



C8B2C8



807A7A



000000



808080

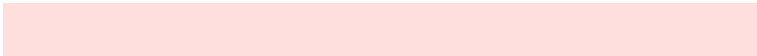


# Same Dimension

The Same Dimension uses a secret algorithm to generate beautiful new colors.



C8B2B2



FFDEDE



C8BDB2



635A5A



A30000



240000



# Inverse Universe

The Inverse Universe completely reimagines the original color for something new.



B2C8C8



DEFFFF



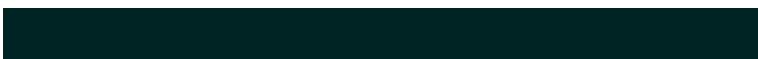
B2BDC8



5A6363



00A3A3

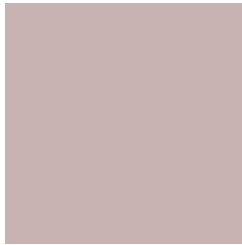


002424



# Previews

## White Background



This preview shows how the Hex color C8B2B2 looks on a white background.

## Color Contrast Check

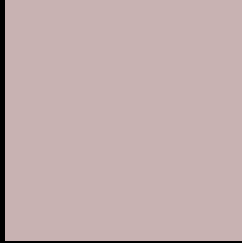
Large Text (above 18pt) WCAG AA × Fail

Any Text WCAG AA × Fail

Large Text (above 18pt) WCAG AAA × Fail

Any Text WCAG AAA × Fail

# Black Background



This preview shows how the Hex color C8B2B2 looks on a black background.

## Color Contrast Check

Large Text (above 18pt) WCAG AA ✓ Pass

Any Text WCAG AA ✓ Pass

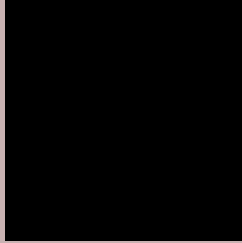
Large Text (above 18pt) WCAG AAA ✓ Pass

Any Text WCAG AAA ✓ Pass

If you want to check with other color combinations, try the [Color Contrast Checker](#).



## Hex C8B2B2 Background



This preview shows how black text looks on a background with the Hex color C8B2B2.



This preview shows how white text looks on a background with the Hex color C8B2B2.

# Color Blindness Simulation

Color vision deficiency is a very complex topic, and I could not describe the different causes any better than Wikipedia does, so if you want to learn more, you should check out their [article about color blindness](#).

## Dichromacy





# Trichromacy



**Original Color**  
C8B2B2

**Protanomaly**  
C0B5B3

**Deuteranomaly**  
CAB1B2

**Tritanomaly**  
C9B1BA

# Monochromacy



**Original Color**  
C8B2B2

**Achromatopsia**  
B9B9B9

**Achromatomaly**  
BEB6B6

# CSS Examples

## Text

The CSS property to change the color of the text to Hex C8B2B2 is called "color". The color property can be set on classes, ids or directly on the HTML element.

This example shows how text in the color #C8B2B2 looks like.

```
.text, #text, p{  
    color:#C8B2B2  
}
```

If you want to add a text shadow in that color use the text-shadow property, you can generate a text shadow directly with our [CSS Text Shadow Generator](#).

Here you see how black text with a 4 pixel #C8B2B2 colored shadow looks like.

```
.shadow{ text-shadow: 4px 4px 2px #C8B2B2
}
```

## Border

The CSS property to change the border of an element to Hex C8B2B2 is called "border". The border property can be set on classes, ids or directly on the HTML element.

This example shows the color as border, it can be applied via the CSS property "border" or "border-color".

```
.border, #border, table{ border:4px solid
#C8B2B2 }
```

If only the border color should be changed use the property `border-color`.

```
.border{ border-color:#C8B2B2 }
```

If you want to add a box shadow in that color use:

Here you see how a box with a 4 pixel #C8B2B2 colored shadow looks like.

```
.boxshadow{ -moz-box-shadow:4px 4px 4px  
4px #C8B2B2; -webkit-box-shadow:4px 4px  
4px 4px #C8B2B2; box-shadow:4px 4px 4px  
4px #C8B2B2 }
```

# Background

The CSS property to change the background color of an element to Hex C8B2B2 is called "background". The background property can be set on classes, ids or directly on the HTML element.

```
.background, #background, body{  
background:#C8B2B2 }
```

If only the background color should be changed can be used:

```
.background{ background-color:#C8B2B2 }
```

This example shows the color as background, it is applied via the CSS property "background".

To optimize and compress your CSS code, you can use our [online CSS compressor and optimizer](#) based on csstidy. If you want to create a linear or radial gradient as background or border, check our [CSS Gradient Generator](#).



Hey! You found this booklet interesting? Support Converting Colors with the new Membership Option!

The pro membership hides all ads, plus gives you double the colors in the color bucket, and more awesome pro features!

**[Learn more, Memberships starting at \\$2.50/m!](#)**

**Follow me  
on Twitter!**

@ConvertingColor