

Converting Colors

Hex(C8B3AD)

Have a look what the booklet for
Hex(C8B3AD) contains.

Hex(C8B3AD)	3
<i>Conversions</i>	4
<i>Details</i>	6
<i>Harmonies</i>	11
<i>Previews</i>	23
<i>Color Blindness Simulation</i>	26
<i>CSS Examples</i>	29

Color

Hex(C8B3AD)

Conversions

Conversions Part 1

Format	Color
Hex	C8B3AD
RGB	200, 179, 173
RGB Percent	78%, 70%, 68%
CMY	0.2157, 0.2980, 0.3216
CMYK	0.00, 0.11, 0.13, 0.22
HSL	13°, 20%, 73%
HSV	13°, 13%, 78%
XYZ	47.4823, 47.5367, 46.2081
YIQ	184.5950, 14.4420, 2.5860

Conversions

Conversions Part 2

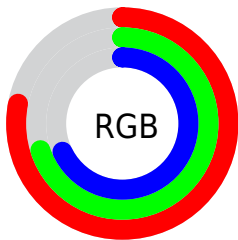
Format	Color
R _Y B	200, 181, 173
Decimal	13153197
CIE Lab	74.53, 6.51, 5.79
CIE LCh	75, 8.716, 41.652
Yxy	47.5367, 0.3362, 0.3366
Android (android.graphics.Color)	4291343277 (0xFFC8B3AD)
YUV	184.5950, -5.7163, 13.5102
Hunter-Lab	68.9469, 2.2724, 8.5267

Details

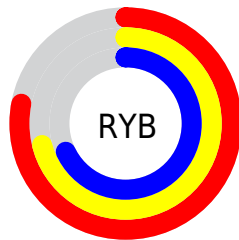
The Hex color **C8B3AD** is a light color, and the websafe version is hex **CCCCCC**. A complement of this color would be **ADC2C8**, and the grayscale version is **B9B9B9**.

A 20% lighter version of the original color is **FFEBE4**, and **927E79** is the 20% darker color. If you saturate the color by 10%, you get **C8A399**, and if you desaturate by 10%, it is **C8C3C1**.

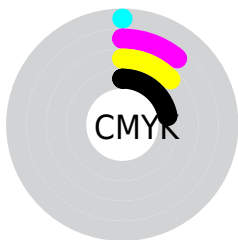
Distribution



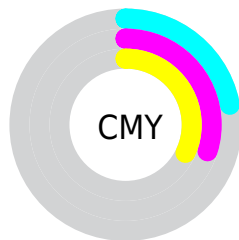
- Red (78%)
- Green (70%)
- Blue (68%)



- Red (78%)
- Yellow (71%)
- Blue (68%)



- Cyan (0%)
- Magenta (11%)
- Yellow (13%)
- Black (22%)



- Cyan (22%)
- Magenta (30%)
- Yellow (32%)

Brightness & Saturation Gradients

These gradients show how the Hex color C8B3AD changes by changing the brightness by 10 percent. The first figure shows a shift by +10% for each color and the second figure -10%.

Similar to the brightness gradients but the following saturation gradients show a change of the Hex color C8B3AD by changing the saturation by 10% instead.

 C8B3AD

 C8B3AD

FFFFFF

 AD9892

 FFEBE4

 927E79

 786560

 5F4D48

 473732

 30211D

 1D0B03

 000000

 C8B3AD

 C8B3AD

 C8A399

 C8C3C1

 C89485

 C8D2D5

 C88471

 C8E2E9

 C8755D

 C8F1FD

 C86549

 C8FFFF

 C85635

 C84621

 C8370D

 C82C00

Harmonies

Analogous

The Analogous color harmony consists of three colors that are next to each other on the color wheel.



C9B2B4



C8B3AD



C3B5A8

Triad

The Triadic color harmony groups three colors that are evenly spaced from another and form a triangle on the color wheel.



C8B3AD



A9BCB2



B3B7C7

Complementary

The Complementary color scheme is a pair of colors which are on the opposite of each other on the color wheel.



C8B3AD



ADC2C8

Split Complementary

Split-complementary colors differ from the complementary color scheme. The scheme consists of three colors, the original color and two neighbors of the complement color.



AABAC6



C8B3AD



A4BCBA

Square

The Square scheme is like the rectangle color scheme, but the four colors are evenly spaced on the color wheel.



C8B3AD



B1BAAB



A4BBC2



BDB4C3

Rectangle

The Rectangle color scheme consists of four colors that form a rectangle on the color wheel.



C8B3AD



BEB7A7



A4BBC2



B0B8C7

Sweetspot

The Sweet Spot groups the original color and five complimentary colors.



C8B3AD



FFF7F5



C8ADC2



807B79



000000



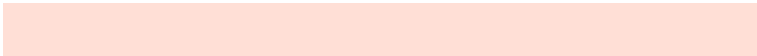
808080

Same Dimension

The Same Dimension uses a secret algorithm to generate beautiful new colors.



C8B3AD



FFDFD6



C8C0AD



635C5A



A32400



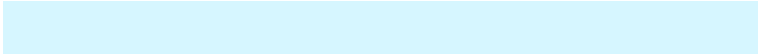
240800

Inverse Universe

The Inverse Universe completely reimagines the original color for something new.



ADC2C8



D6F6FF



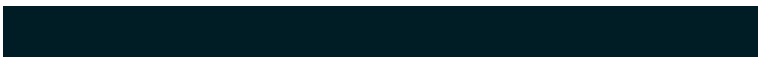
ADB5C8



5A6163



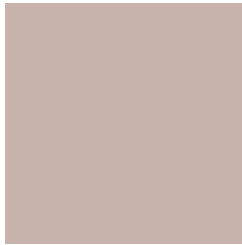
007FA3



001C24

Previews

White Background



This preview shows how the Hex color C8B3AD looks on a white background.

Color Contrast Check

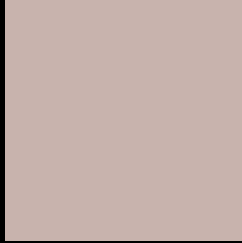
Large Text (above 18pt) WCAG AA × Fail

Any Text WCAG AA × Fail

Large Text (above 18pt) WCAG AAA × Fail

Any Text WCAG AAA × Fail

Black Background



This preview shows how the Hex color C8B3AD looks on a black background.

Color Contrast Check

Large Text (above 18pt) WCAG AA ✓ Pass

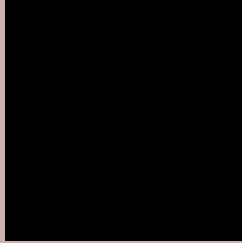
Any Text WCAG AA ✓ Pass

Large Text (above 18pt) WCAG AAA ✓ Pass

Any Text WCAG AAA ✓ Pass

If you want to check with other color combinations, try the [Color Contrast Checker](#).

Hex C8B3AD Background



This preview shows how black text looks on a background with the Hex color C8B3AD.



This preview shows how white text looks on a background with the Hex color C8B3AD.

Color Blindness Simulation

Color vision deficiency is a very complex topic, and I could not describe the different causes any better than Wikipedia does, so if you want to learn more, you should check out their [article about color blindness](#).

Dichromacy



Original Color
C8B3AD

Protanopia
BDB7AF

Deuteranopia
CDB1AD

Trichromacy



Original Color
C8B3AD

Protanomaly
C1B6AE

Deuteranomaly
CBB2AD

Tritanomaly
C9B1B8

Monochromacy



Original Color
C8B3AD

Achromatopsia
B9B9B9

Achromatomaly
BEB7B5

CSS Examples

Text

The CSS property to change the color of the text to Hex C8B3AD is called "color". The color property can be set on classes, ids or directly on the HTML element.

This example shows how text in the color #C8B3AD looks like.

```
.text, #text, p{  
    color:#C8B3AD  
}
```

If you want to add a text shadow in that color use the text-shadow property, you can generate a text shadow directly with our [CSS Text Shadow Generator](#).

Here you see how black text with a 4 pixel #C8B3AD colored shadow looks like.

```
.shadow{ text-shadow: 4px 4px 2px #C8B3AD }  
}
```

Border

The CSS property to change the border of an element to Hex C8B3AD is called "border". The border property can be set on classes, ids or directly on the HTML element.

This example shows the color as border, it can be applied via the CSS property "border" or "border-color".

```
.border, #border, table{ border:4px solid #C8B3AD }  
}
```

If only the border color should be changed use the property `border-color`.

```
.border{ border-color:#C8B3AD }
```

If you want to add a box shadow in that color use:

Here you see how a box with a 4 pixel #C8B3AD colored shadow looks like.

```
.boxshadow{ -moz-box-shadow:4px 4px 4px  
4px #C8B3AD; -webkit-box-shadow:4px 4px  
4px 4px #C8B3AD; box-shadow:4px 4px 4px  
4px #C8B3AD }
```

Background

The CSS property to change the background color of an element to Hex C8B3AD is called "background". The background property can be set on classes, ids or directly on the HTML element.

```
.background, #background, body{  
background:#C8B3AD }
```

If only the background color should be changed can be used:

```
.background{ background-color:#C8B3AD }
```

This example shows the color as background, it is applied via the CSS property "background".

To optimize and compress your CSS code, you can use our [online CSS compressor and optimizer](#) based on csstidy. If you want to create a linear or radial gradient as background or border, check our [CSS Gradient Generator](#).

Hey! You found this booklet interesting? Support Converting Colors with the new Membership Option!

The pro membership hides all ads, plus gives you double the colors in the color bucket, and more awesome pro features!

[Learn more, Memberships starting at \\$2.50/m!](#)

**Follow me
on Twitter!**

@ConvertingColor